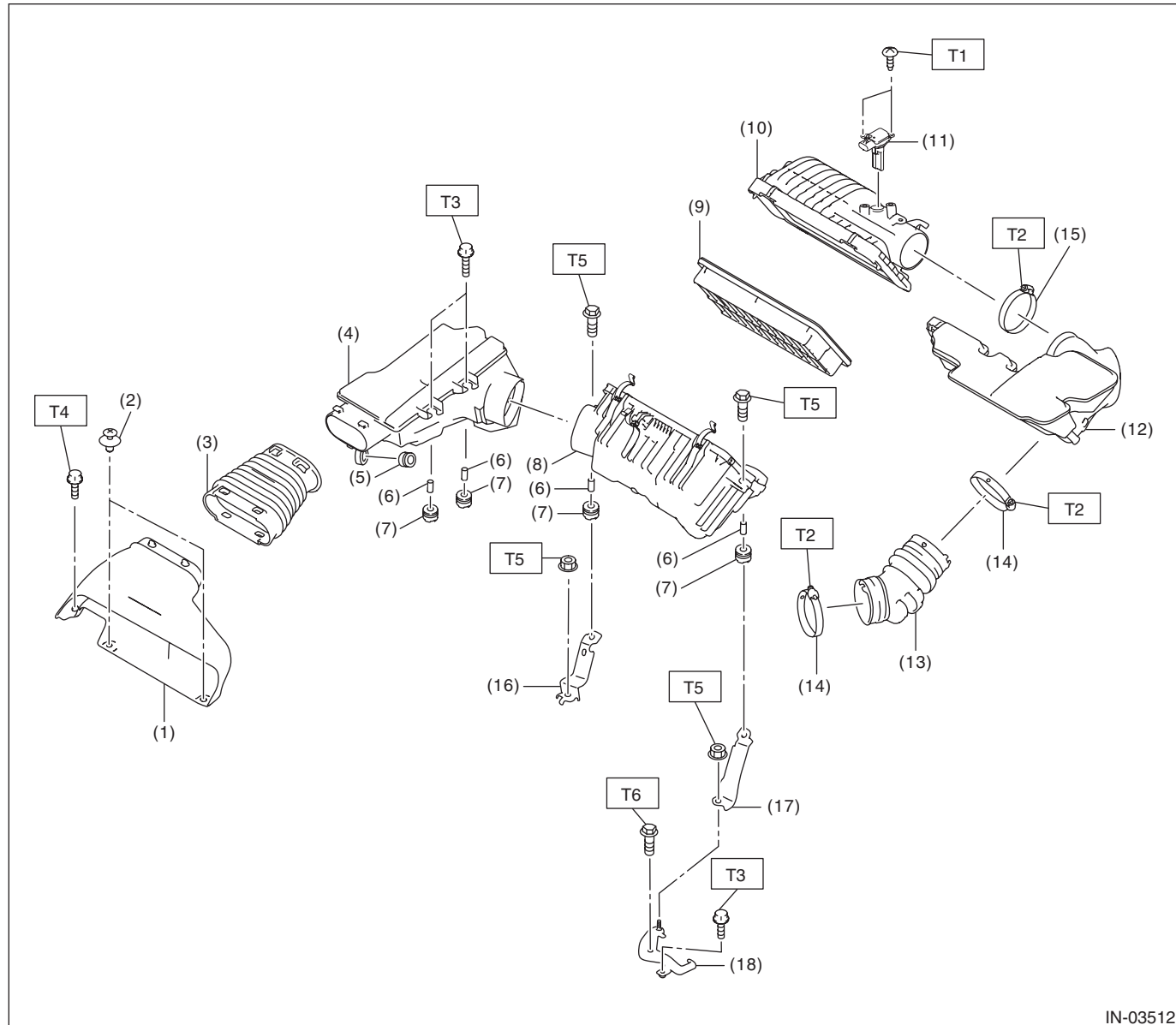


# General Description

INTAKE (INDUCTION)

## 1. General Description

### A: COMPONENT



IN-03512

(1) Air intake duct	(10) Air cleaner case (rear)	(18) Air cleaner case bracket No. 2
(2) Clip	(11) Mass air flow and intake air temperature sensor	
(3) Air intake boot No. 1	(12) Resonator chamber	
(4) Intake duct	(13) Air intake boot No. 2	
(5) Cushion	(14) Clamp	
(6) Spacer	(15) Clamp	
(7) Cushion	(16) Air cleaner case bracket No. 1 RH	
(8) Air cleaner case (front)	(17) Air cleaner case bracket No. 1 LH	
(9) Air cleaner element		

#### **Tightening torque: N·m (kgf-m, ft-lb)**

**T1: 1 (0.1, 0.7)**

**T2: 3 (0.3, 2.2)**

**T3: 6.4 (0.7, 4.7)**

**T4: 7.5 (0.8, 5.5)**

**T5: 16 (1.6, 11.8)**

**T6: 18 (1.8, 13.3)**

### **B: CAUTION**

- Prior to starting work, pay special attention to the following:
  1. Always wear work clothes, a work cap, and protective shoes. Additionally, wear a helmet, protective goggles, etc. if necessary.
  2. Protect the vehicle using a seat cover, fender cover, etc.
  3. Prepare the service tools, clean cloth, containers to catch grease and oil, etc.
- Vehicle components are extremely hot immediately after driving. Be wary of receiving burns from heated parts.
- When performing a repair, identify the cause of trouble and avoid unnecessary removal, disassembly and replacement.
- Before disconnecting connectors of sensors or units, be sure to disconnect the ground cable from battery.
- Always use the jack-up point when the shop jacks or rigid racks are used to support the vehicle.
- Remove contamination including dirt and corrosion before removal, installation, disassembly or assembly.
- Keep the removed parts in order and protect them from dust and dirt.
- All removed parts, if to be reused, should be reinstalled in the original positions with attention to the correct directions, etc.
- Bolts, nuts and washers should be replaced with new parts as required.
- Be sure to tighten the fasteners including bolts and nuts to the specified torque.