

1. General Description

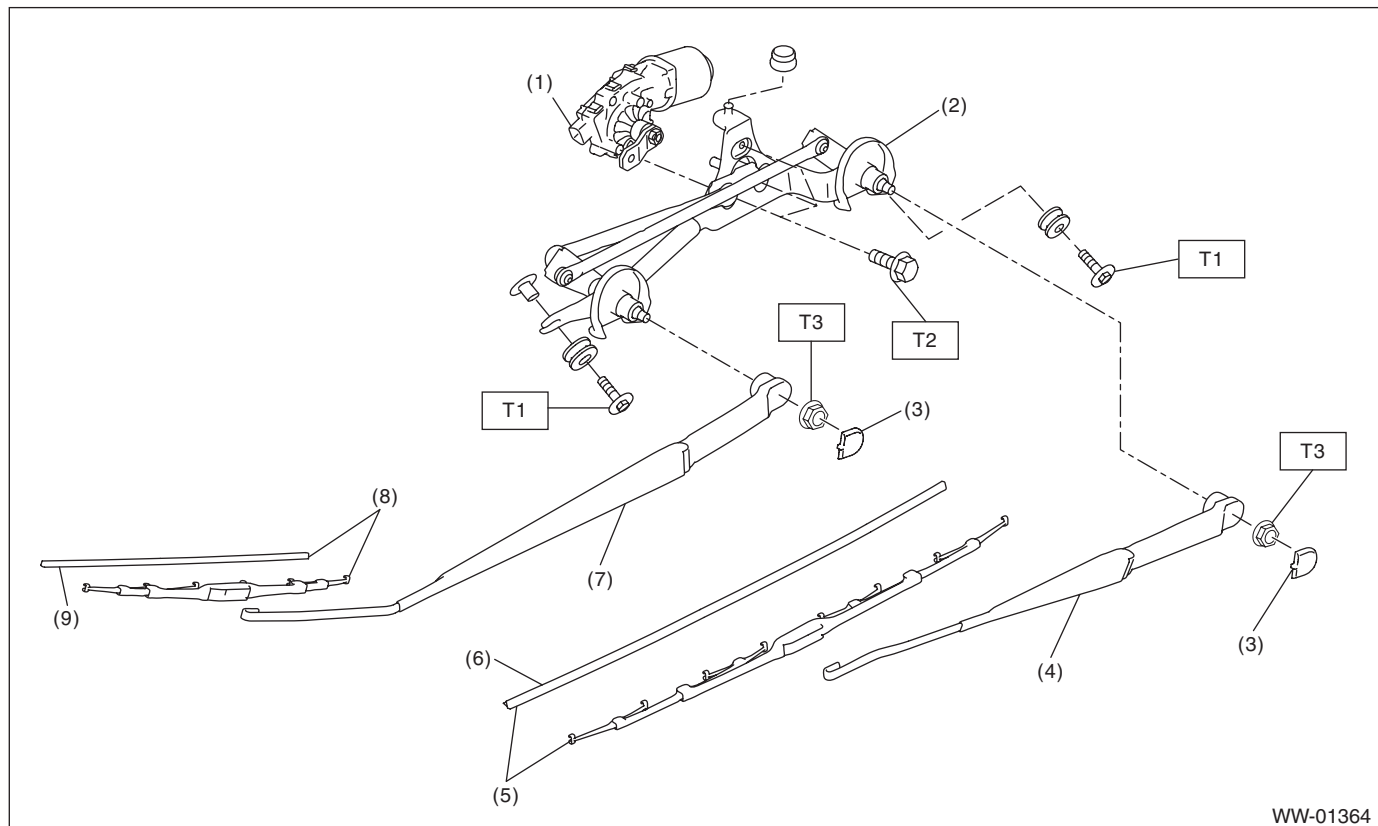
A: SPECIFICATION

Front wiper motor	Input	12 V — 72 W or less
Rear wiper motor	Input	12 V — 42 W or less
Front washer motor	Pump type	Centrifugal
	Input	12 V — 60 W or less
Rear washer motor	Pump type	Centrifugal
	Input	12 V — 36 W or less

B: COMPONENT

1. FRONT WIPER

- Models without EyeSight



- | | |
|--|---|
| (1) Motor ASSY - windshield wiper | (6) Rubber ASSY - windshield wiper driver |
| (2) Link ASSY - windshield wiper | (7) Arm ASSY - windshield wiper assistor |
| (3) Cover - windshield wiper arm | (8) Blade ASSY - windshield wiper assistor |
| (4) Arm ASSY - windshield wiper driver | (9) Rubber ASSY - windshield wiper assistor |
| (5) Blade ASSY - windshield wiper driver | |

Tightening torque: N·m (kgf-m, ft-lb)

T1: 6 (0.61, 4.4)

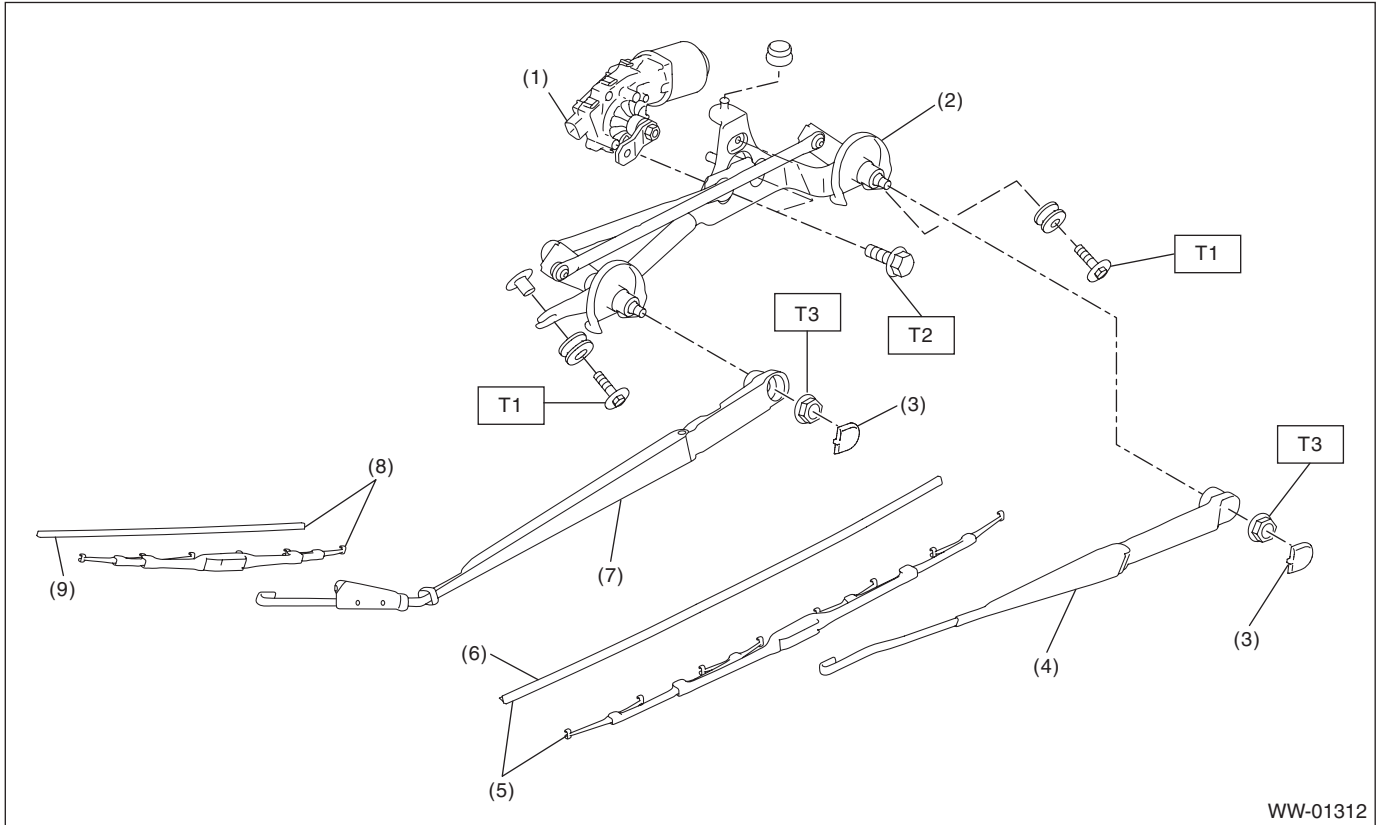
T2: 5.5 (0.56, 4.1)

T3: 26 (2.65, 19.2)

General Description

WIPER AND WASHER SYSTEMS

- Models with EyeSight



WW-01312

- (1) Motor ASSY - windshield wiper
- (2) Link ASSY - windshield wiper
- (3) Cover - windshield wiper arm
- (4) Arm ASSY - windshield wiper driver
- (5) Blade ASSY - windshield wiper driver

- (6) Rubber ASSY - windshield wiper driver
- (7) Arm ASSY - windshield wiper assistor
- (8) Blade ASSY - windshield wiper assistor
- (9) Rubber ASSY - windshield wiper assistor

Tightening torque: N·m (kgf-m, ft-lb)

T1: 6 (0.61, 4.4)

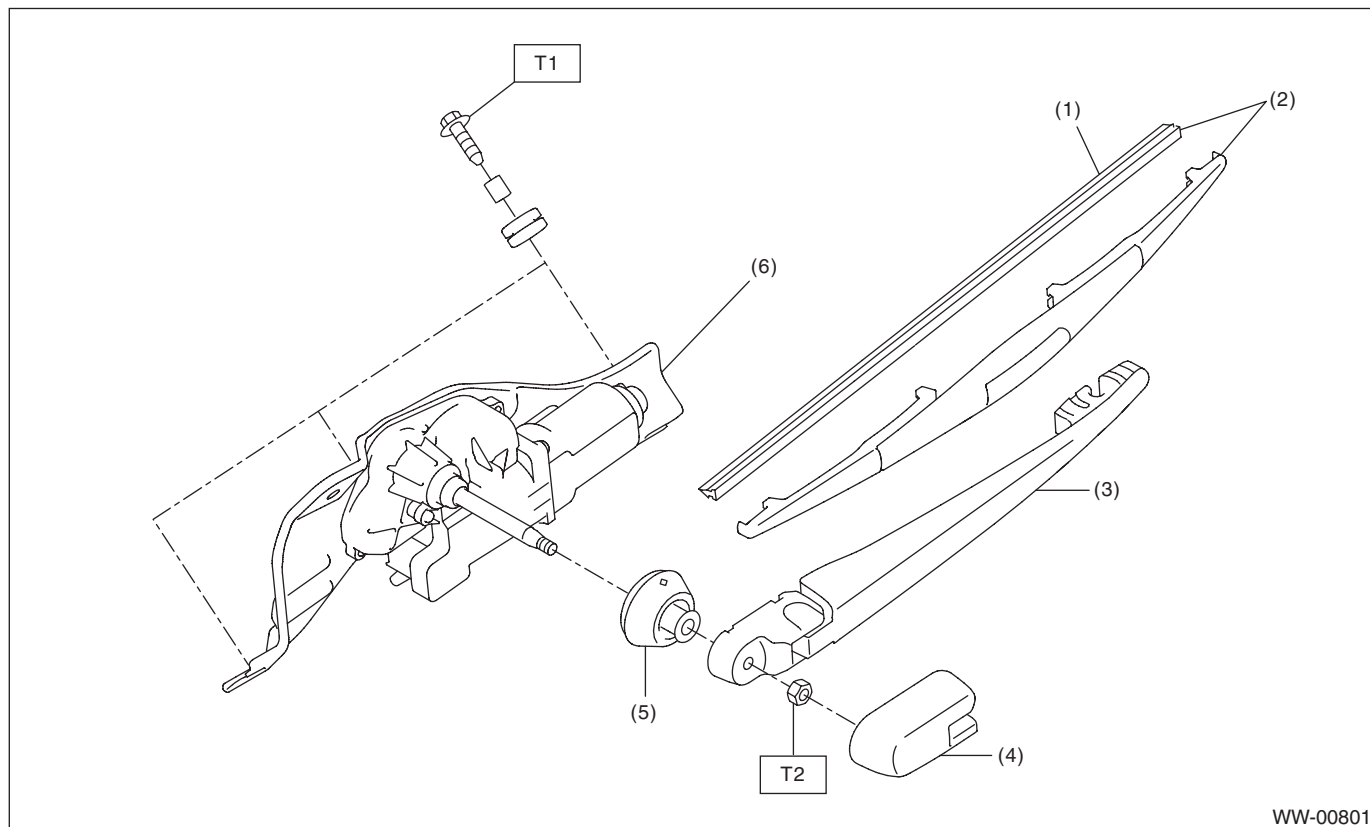
T2: 5.5 (0.56, 4.1)

T3: 26 (2.65, 19.2)

General Description

WIPER AND WASHER SYSTEMS

2. REAR WIPER



WW-00801

- | | |
|------------------------------|-----------------------------|
| (1) Rubber ASSY - rear wiper | (4) Cover - rear wiper arm |
| (2) Blade ASSY - rear wiper | (5) Cap - pivot wiper |
| (3) Arm ASSY - rear wiper | (6) Motor ASSY - rear wiper |

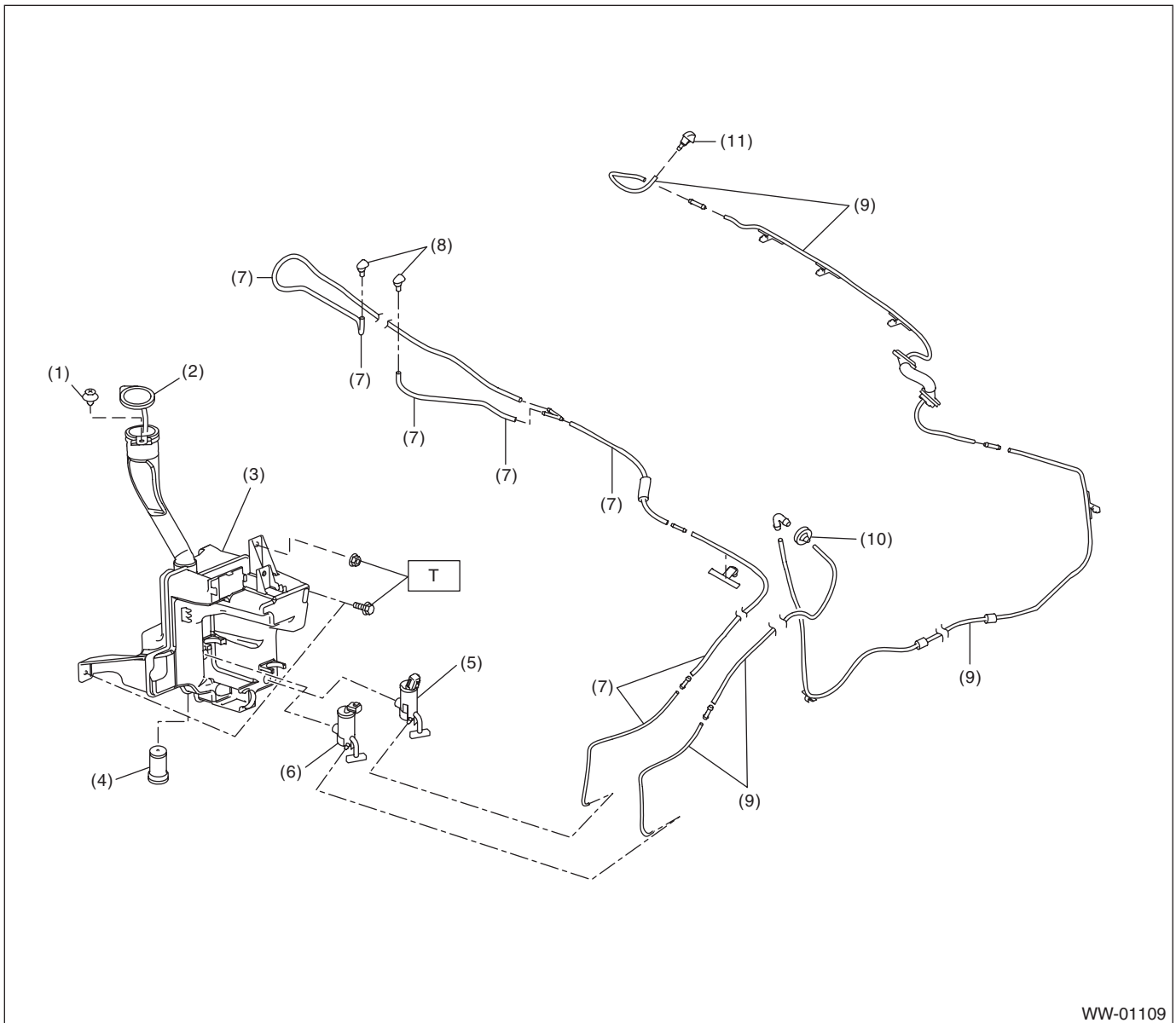
Tightening torque: N·m (kgf-m, ft-lb)

T1: 6 (0.61, 4.4)

T2: 8 (0.82, 5.9)

3. WASHER TANK

- Models without EyeSight



WW-01109

- | | |
|---|---|
| (1) Clip | (7) Hose - windshield washer |
| (2) Holder - windshield washer tank | (8) Nozzle - windshield washer |
| (3) Tank - washer | (9) Hose ASSY - rear washer
(5 door model/XV model) |
| (4) Sensor - washer tank | (10) Grommet - washer hose |
| (5) Motor pump ASSY - washer front | (11) Nozzle - rear washer
(5 door model/XV model only) |
| (6) Motor pump ASSY - washer rear
(5 door model/XV model only) | |

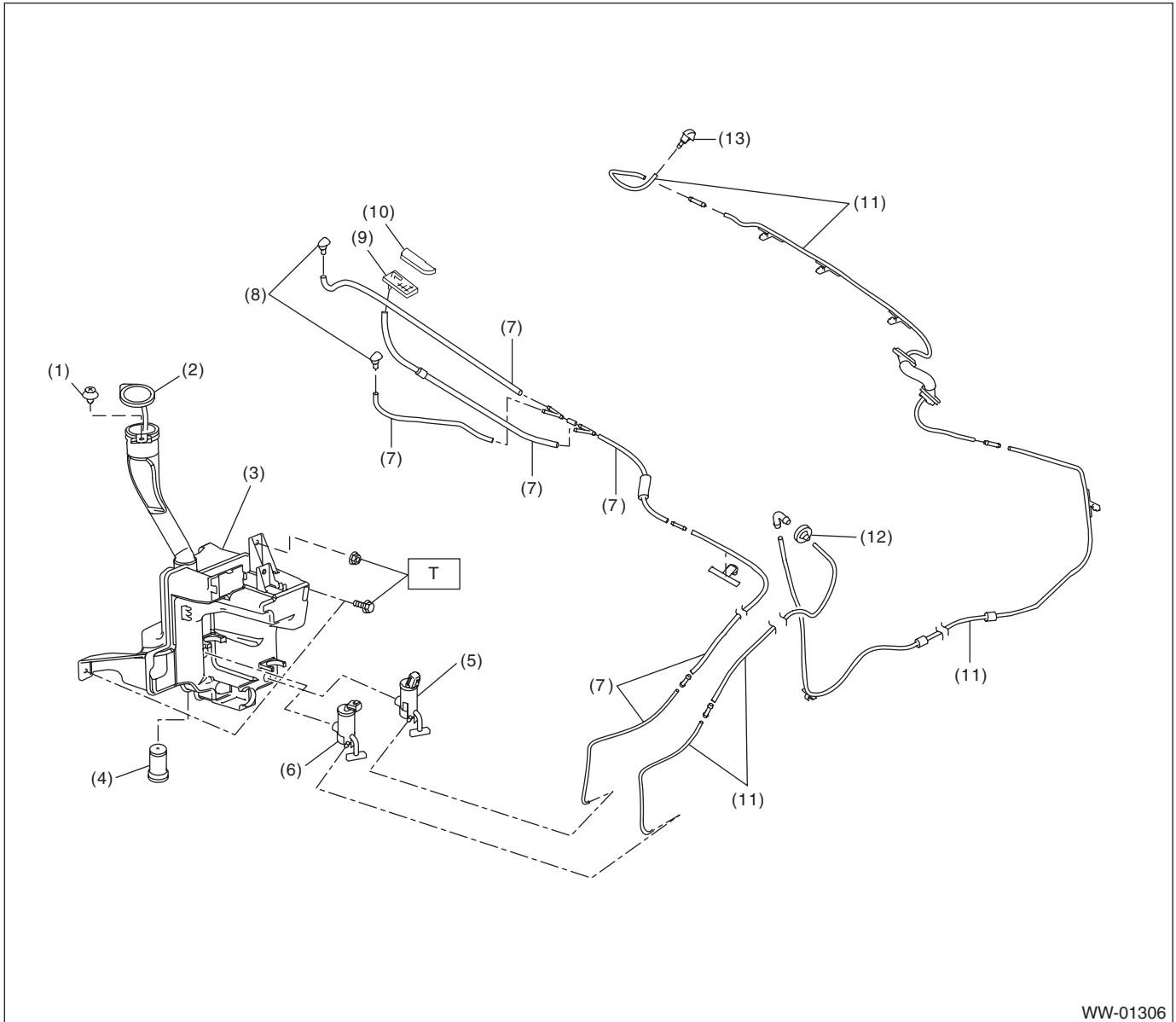
Tightening torque: N·m (kgf-m, ft-lb)

T: 6 (0.61, 4.4)

General Description

WIPER AND WASHER SYSTEMS

• Models with EyeSight



- | | | |
|---|---|---|
| (1) Clip | (7) Hose - windshield washer | (13) Nozzle - rear washer
(5 door model/XV model only) |
| (2) Holder - windshield washer tank | (8) Nozzle - windshield washer | |
| (3) Tank - washer | (9) Joint - washer hose | |
| (4) Sensor - washer tank | (10) Cover - joint | |
| (5) Motor pump ASSY - washer front | (11) Hose ASSY - rear washer
(5 door model/XV model) | |
| (6) Motor pump ASSY - washer rear
(5 door model/XV model only) | (12) Grommet - washer hose | |

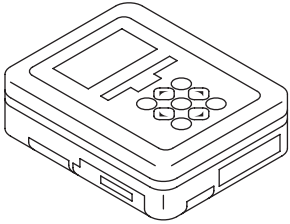
Tightening torque: N·m (kgf-m, ft-lb)

T: 6 (0.61, 4.4)

C: CAUTION

- Connect the connectors and hoses securely during reassembly.
- After reassembly, make sure that the each component or each function operates normally.
- Be careful with the airbag system wiring harness which passes near electrical parts and switches.
- Yellow connectors and harnesses with yellow tapes around them are the connectors and harnesses for the airbag system. Using a tester above such circuits may cause malfunction of airbag system. Follow the cautions of "AIRBAG SYSTEM" in this case. <Ref. to AB-10, CAUTION, General Description.>
- When connecting the pipe hoses, be careful not to cause bend or blockage.
- If even a small amount of silicon oil or grease enters the tank - washer and the washer fluid passages, an oil film will be formed on the glass and will cause the wiper to chatter and judder. Make sure that no oil comes into contact with the system.

D: PREPARATION TOOL**1. SPECIAL TOOL**

ILLUSTRATION	TOOL NUMBER	DESCRIPTION	REMARKS
 ST1B022XU0	1B022XU0	SUBARU SELECT MONITOR III KIT	Used for setting of each function and trouble-shooting for electrical system. NOTE: For detailed operation procedures of Subaru Select Monitor III, refer to "PC application help for Subaru Select Monitor".

2. GENERAL TOOL

TOOL NAME	REMARKS
Circuit tester	Used for checking voltage and continuity.