

# Trunk Room Light

## LIGHTING SYSTEM

### 34.Trunk Room Light

#### A: REMOVAL

1) Disconnect the ground cable from battery. <Ref. to NT-5, BATTERY, NOTE, Note.>

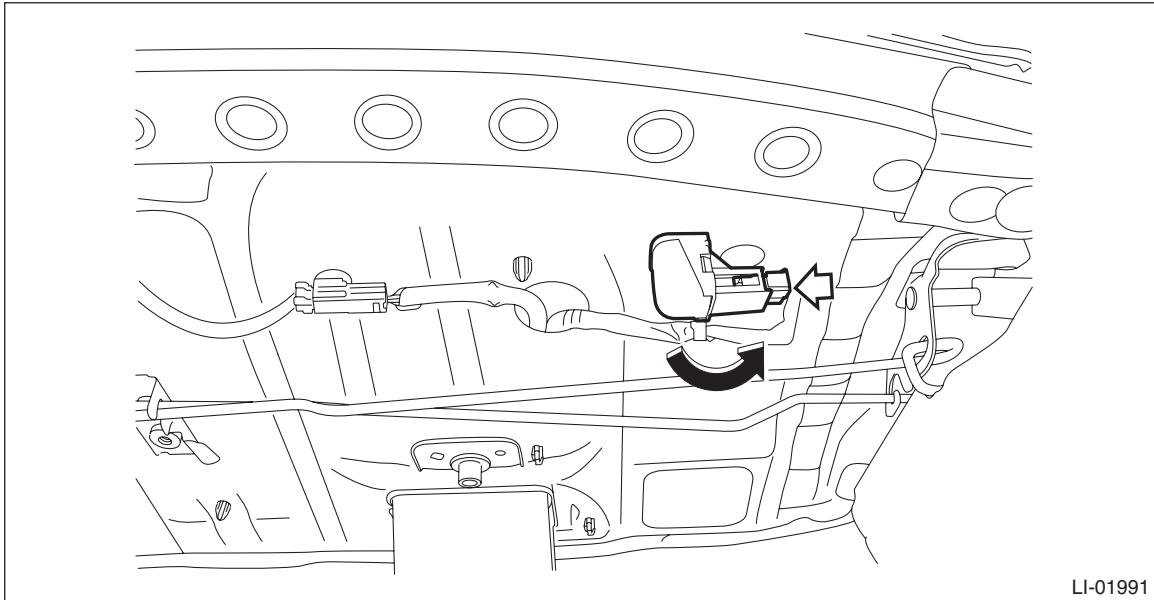
#### NOTE:

For the 12 volt engine restart battery of HEV model, disconnect the ground terminal from 12V engine restart battery sensor.

2) Remove the light assembly - trunk room.

(1) Disconnect the connector.

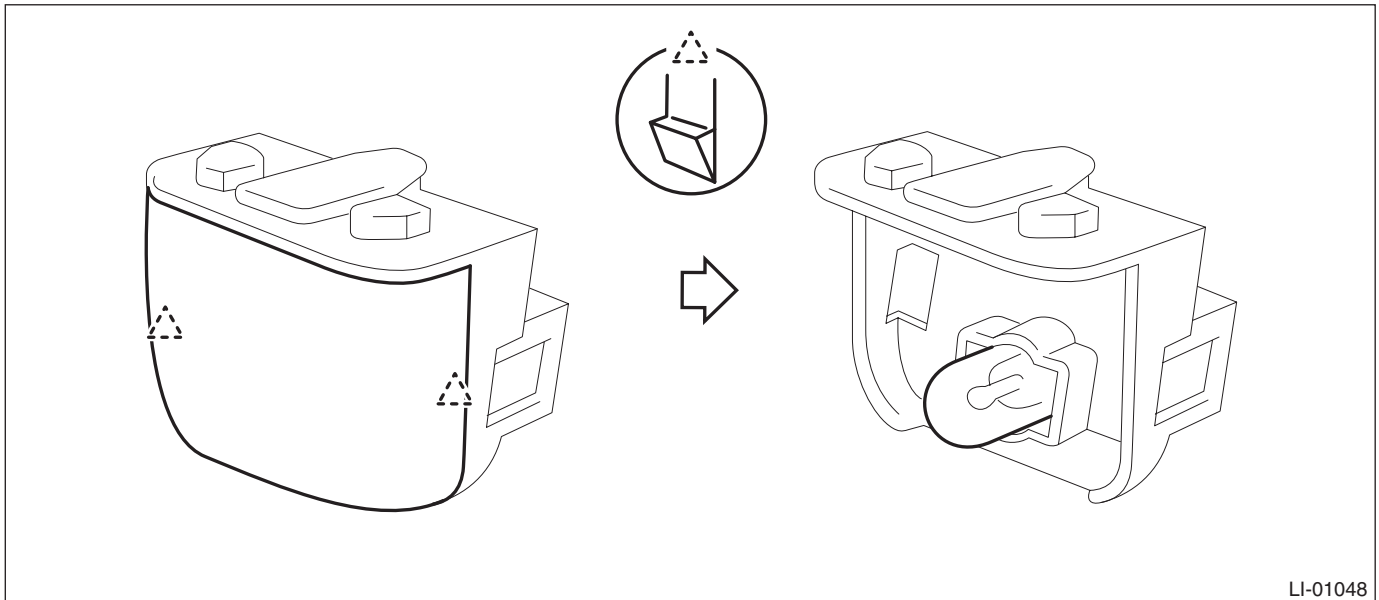
(2) Turn the light assembly - trunk room counterclockwise to 60° and remove the light.



3) Release the claws, and detach the lens and bulb.

#### CAUTION:

Use a dry clean cloth so that no grease or water adheres to the glass portion of the bulb.



## **B: INSTALLATION**

Install each part in the reverse order of removal.

## **C: INSPECTION**

- 1) Visually check the bulb for blow out.
- 2) Check the bulb specification. <Ref. to LI-2, SPECIFICATION, General Description.>
- 3) Replace the bulb if it is found defective.