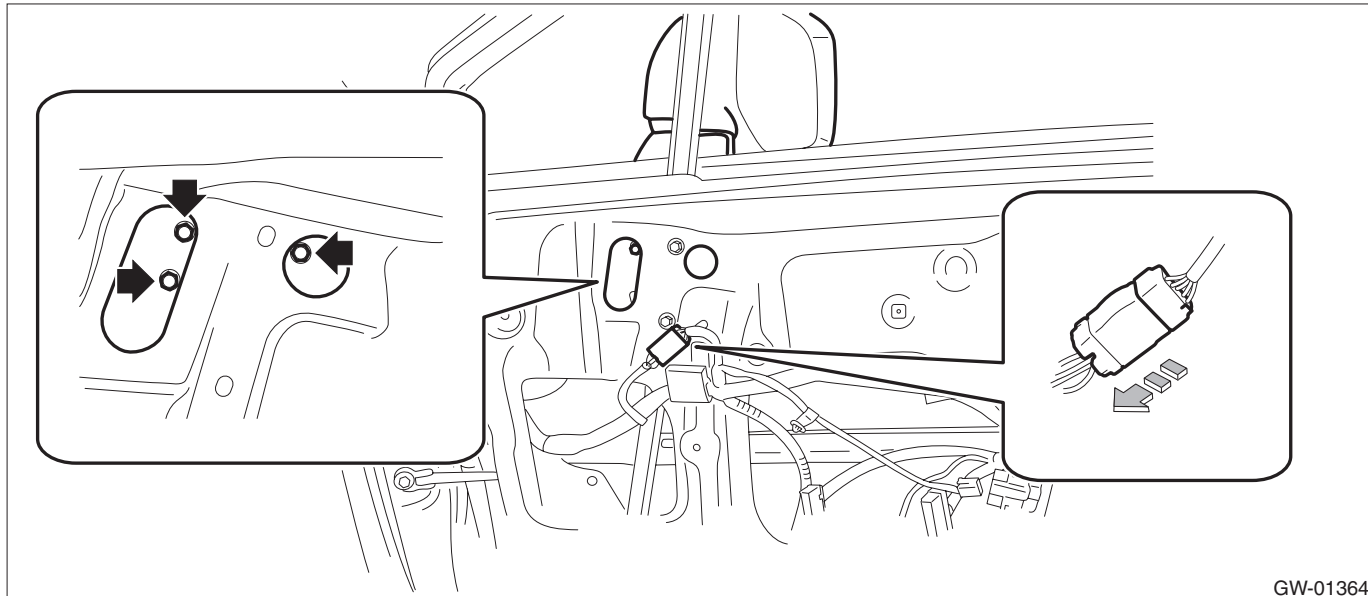


8. Outer Mirror Assembly

A: REMOVAL

Refer to "DISASSEMBLY" for removal procedures of scalp cap and mirror face. <Ref. to GW-25, DISASSEMBLY, Outer Mirror Assembly.>

- 1) Remove the trim panel - front door. <Ref. to EI-72, FRONT DOOR, REMOVAL, Door Trim.>
- 2) Remove the outer mirror assembly.
 - (1) Remove the connector clip that is installed on the panel assembly - front door, and disconnect the connector.
 - (2) Turn over the sealing cover - front door.
 - (3) Remove the bolts to remove outer mirror assembly.



GW-01364

B: INSTALLATION

Install each part in the reverse order of removal.

Tightening torque:

Outer mirror assembly: 7.5 N·m (0.76 kgf-m, 5.5 ft-lb)

C: DISASSEMBLY**CAUTION:**

- When removing the mirror - repair, be careful not to damage the back surface of mirror - repair with a flat tip screwdriver.

- When installing the mirror - repair, insert the connector and clip securely.

1) Operate the remote control mirror switch to face the mirror - repair upward.

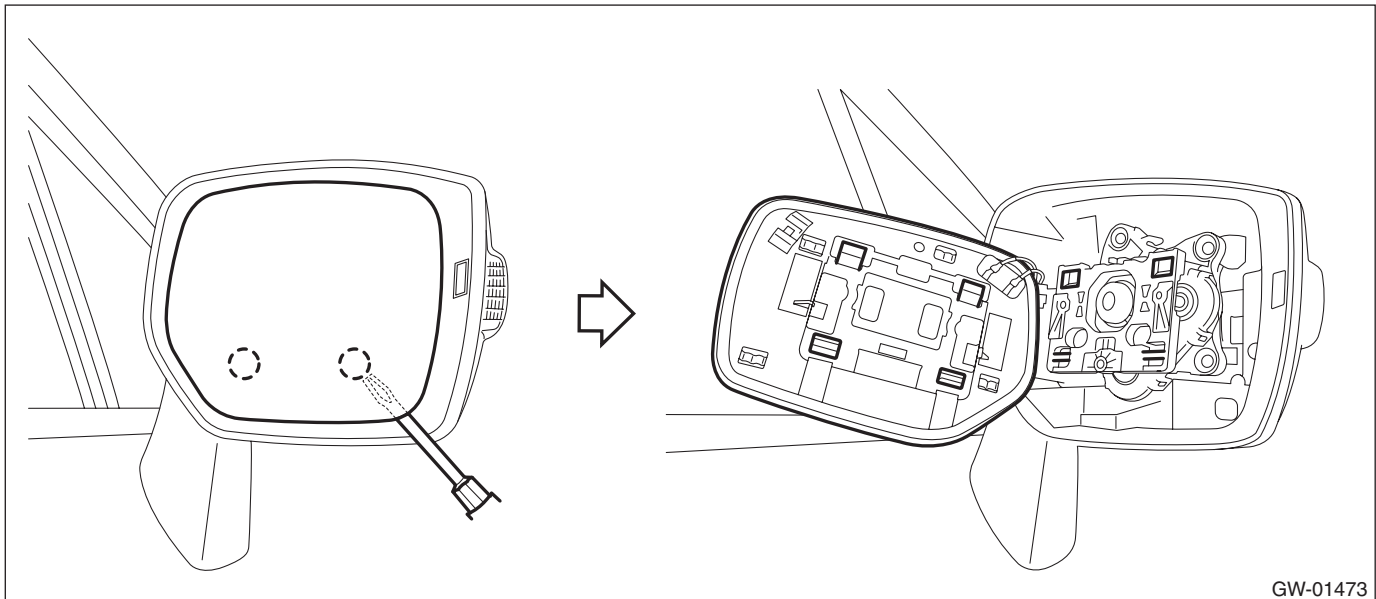
2) Disconnect the ground cable from battery and wait for at least 60 seconds before starting work. <Ref. to NT-5, BATTERY, NOTE, Note.>

NOTE:

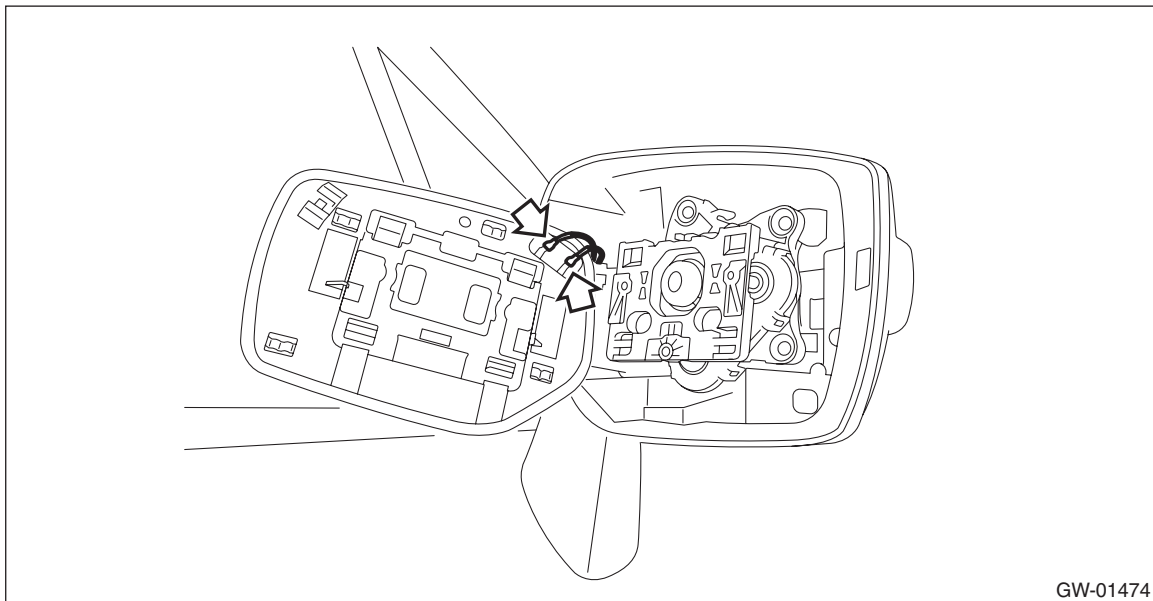
For the 12 volt engine restart battery of HEV model, disconnect the ground terminal from 12V engine restart battery sensor.

3) Remove the mirror - repair.

(1) Using a flat tip screwdriver, release the clip, and slide the mirror - repair downward to remove.



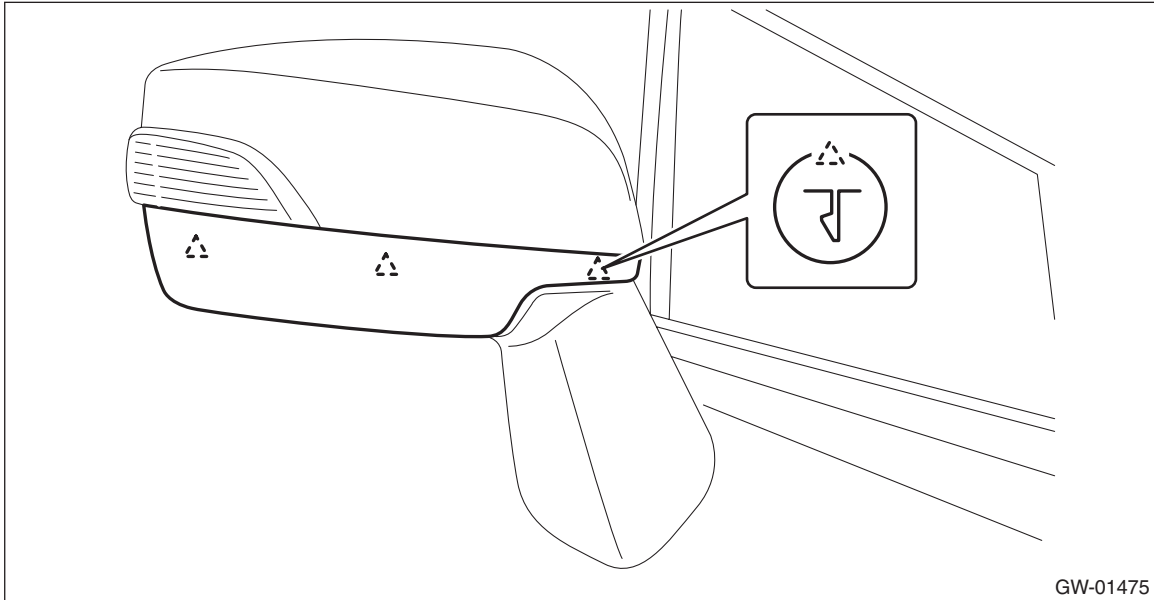
(2) Disconnect the mirror heater connector. (Model with mirror heater)



Outer Mirror Assembly

GLASS/WINDOWS/MIRRORS

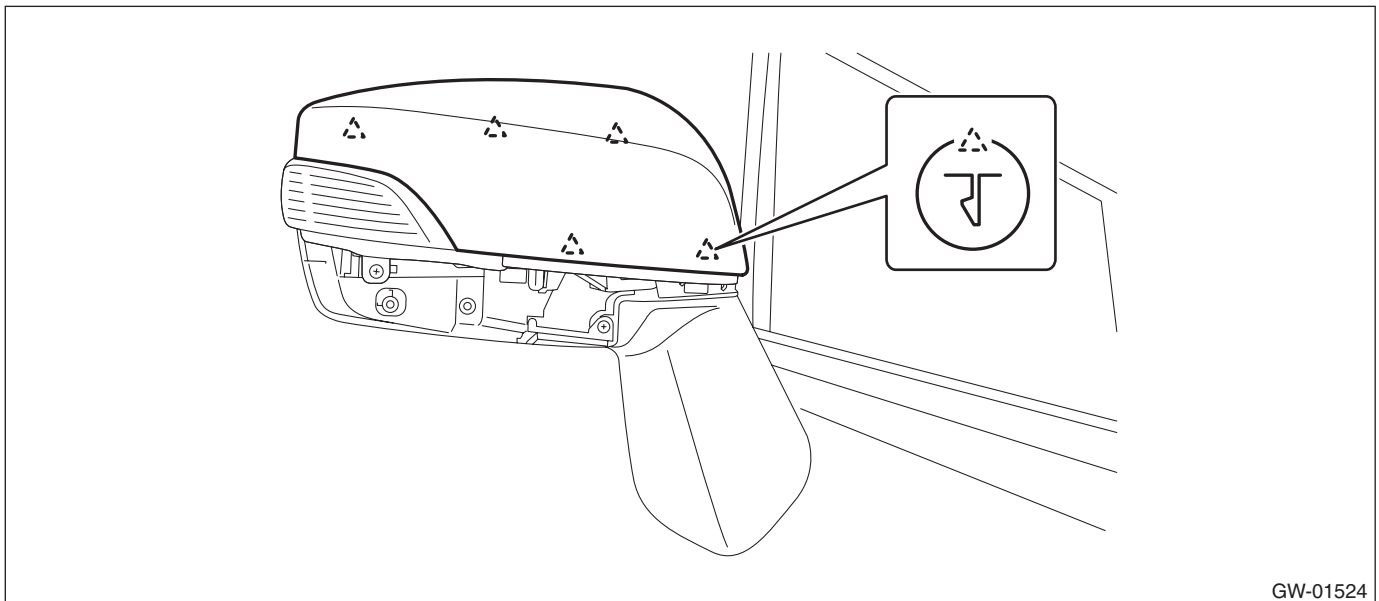
4) Release the claws, and then remove the cover - cap outer mirror lower.



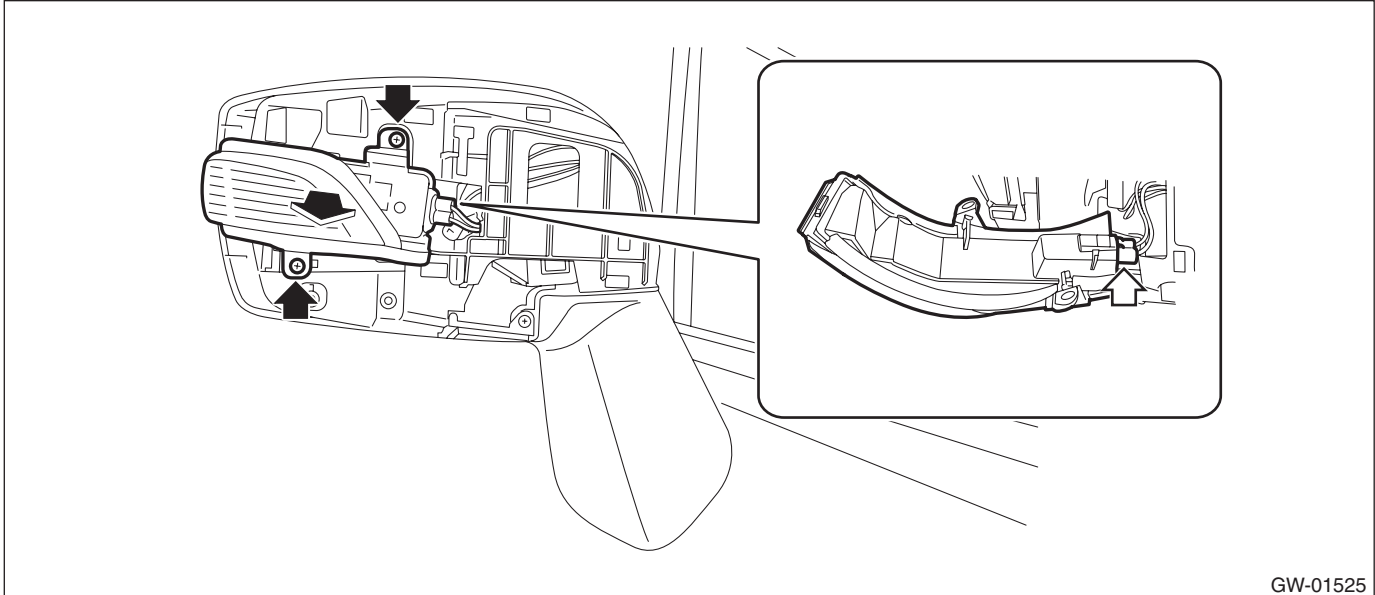
5) Release the claws, and then remove the cover - cap outer mirror.

CAUTION:

Be careful not to apply excessive force when removing the cover - cap outer mirror, as the lower hooks may become damaged.



- 6) Remove the light assembly - side turn mirror. (Model with side turn signal light)
 - (1) Remove the screws and pull out the light assembly - side turn mirror to the front of the vehicle.
 - (2) Disconnect the connector and remove the light assembly - side turn mirror.



GW-01525

- 7) Remove the screws and detach the cover.

D: ASSEMBLY

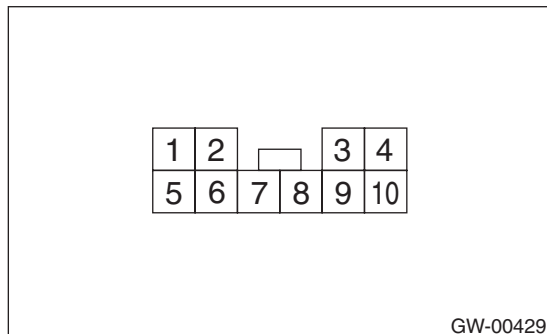
CAUTION:

Be careful not to catch the harness in between the parts.

- 1) Install the cover.
- 2) Install the light assembly - side turn mirror.
- 3) Install the cover - cap outer mirror.
- 4) Install the cover - cap outer mirror lower.
- 5) Check that all the claws are securely engaged.

E: INSPECTION

- 1) Disconnect the outer mirror connector.
- 2) Apply battery voltage between the outer mirror connector terminals and check the mirror operation.



GW-00429

| Terminal No. | Inspection conditions | Switch position |
|--------------|--|-----------------|
| — | — | OFF |
| 3 (+) — 8(-) | Apply battery voltage between terminals. | UP |
| 8 (+) — 3(-) | Apply battery voltage between terminals. | DOWN |
| 7 (+) — 3(-) | Apply battery voltage between terminals. | LEFT |
| 3 (+) — 7(-) | Apply battery voltage between terminals. | RIGHT |

- 3) If it does not operate normally, replace the outer mirror assembly.