

## 14. Front Accessory Power Supply Socket

### A: WIRING DIAGRAM

Refer to "Front Accessory Power Supply Socket System" in the wiring diagram.

- Gasoline engine model: <Ref. to WI(w/o HEV)-130, WIRING DIAGRAM, Front Accessory Power Supply Socket System.>
- HEV model: <Ref. to WI(HEV)-128, WIRING DIAGRAM, Front Accessory Power Supply Socket System.>

### B: REMOVAL

- 1) Disconnect the ground cable from battery. <Ref. to NT-5, BATTERY, NOTE, Note.>

#### NOTE:

For the 12 volt engine restart battery of HEV model, disconnect the ground terminal from 12V engine restart battery sensor.

- 2) Remove the cover assembly - instrument panel LWR driver and the knee airbag module. <Ref. to AB-34, REMOVAL, Knee Airbag Module.>

- 3) Remove the glove box. <Ref. to EI-78, REMOVAL, Glove Box.>

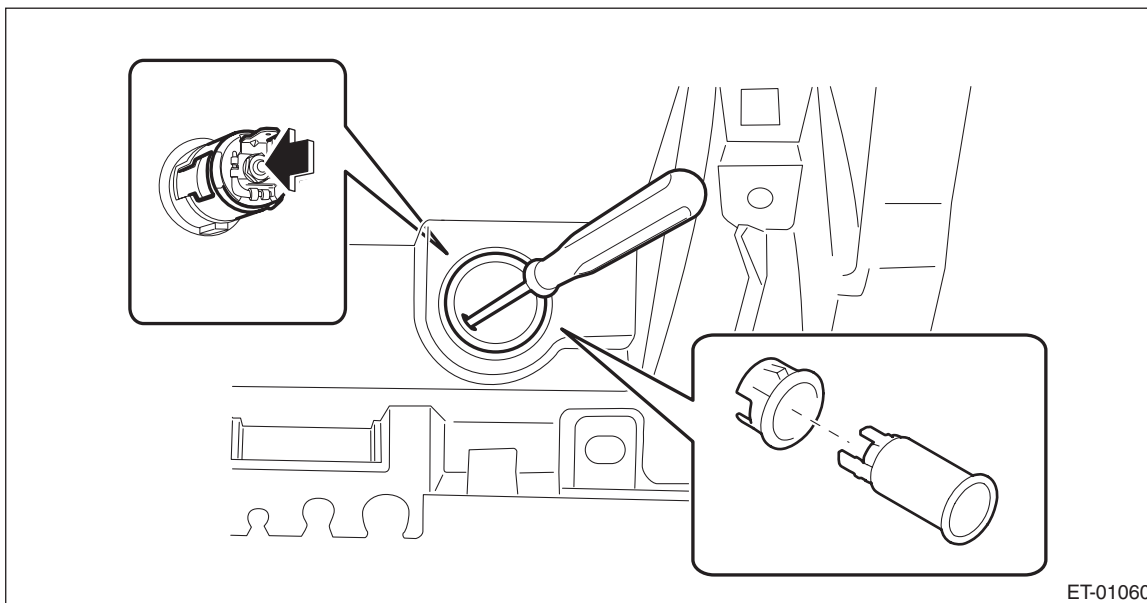
- 4) Remove the center grille assembly. <Ref. to AC-104, CENTER GRILLE ASSEMBLY, REMOVAL, Air Vent Grille.>

- 5) Remove the audio assembly or navigation assembly. <Ref. to ET-12, REMOVAL, Audio.>

- 6) Remove the socket assembly.

- (1) Disconnect the connector.

- (2) While releasing the claw inside, press it in from the rear to remove the socket assembly.



- (3) Remove the clip - socket.

## C: INSTALLATION

Install each part in the reverse order of removal.

### NOTE:

Align the grooves of the holder with the claws of accessory power supply socket.

