

10.Front Sub Sensor

A: REMOVAL

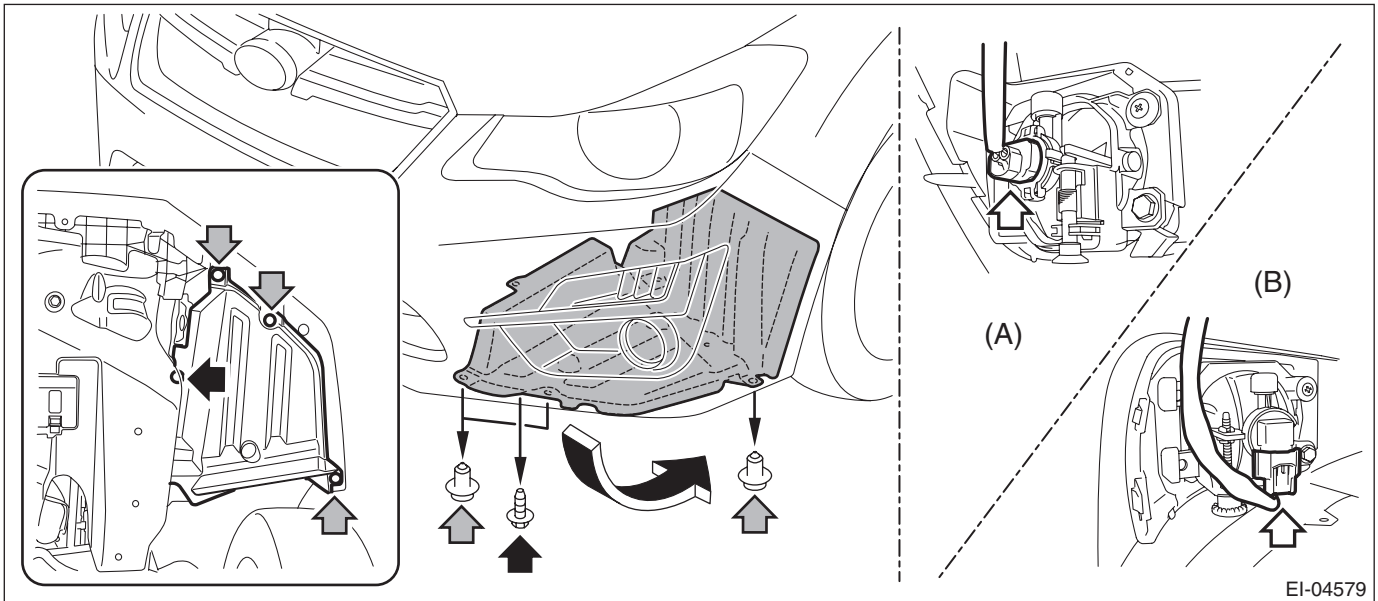
- 1) Turn the ignition switch to OFF.
- 2) Disconnect the ground cable from battery and wait for at least 60 seconds before starting work. <Ref. to NT-5, BATTERY, NOTE, Note.>

NOTE:

For the 12 volt engine restart battery of HEV model, disconnect the ground terminal from 12V engine restart battery sensor.

- 3) Remove the bumper face - front.

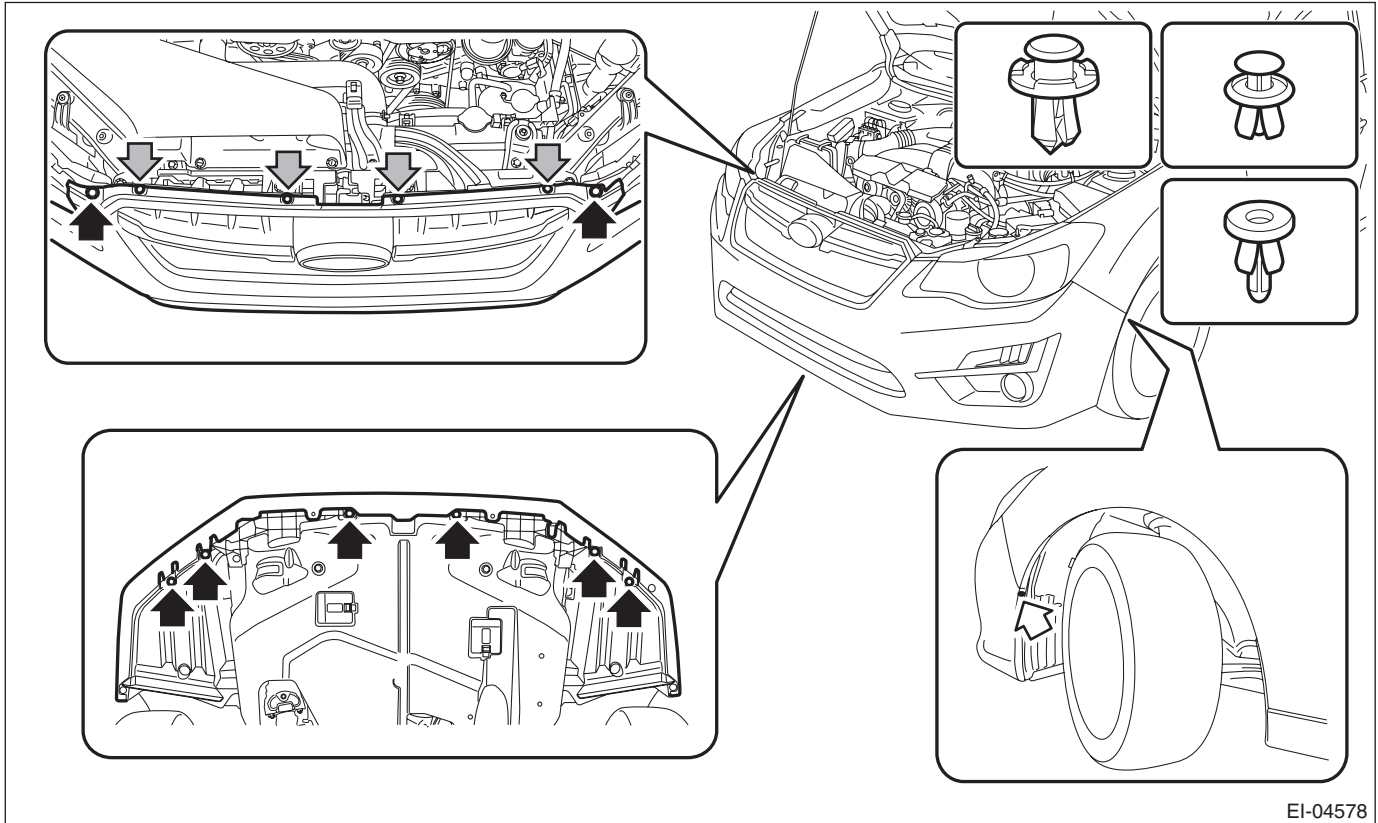
(1) Remove the screws and clips, and turn over the mud guard - front, and then disconnect the connectors of the fog light assembly - front on the LH and RH sides. (Model with fog light)



EI-04579

- (2) Remove the clips at the upper side of the bumper face - front.
- (3) Remove the clips from the fender.

(4) Remove the clips at the lower side of the bumper face - front.



(5) Apply protective tape (A) to the light assembly - head.

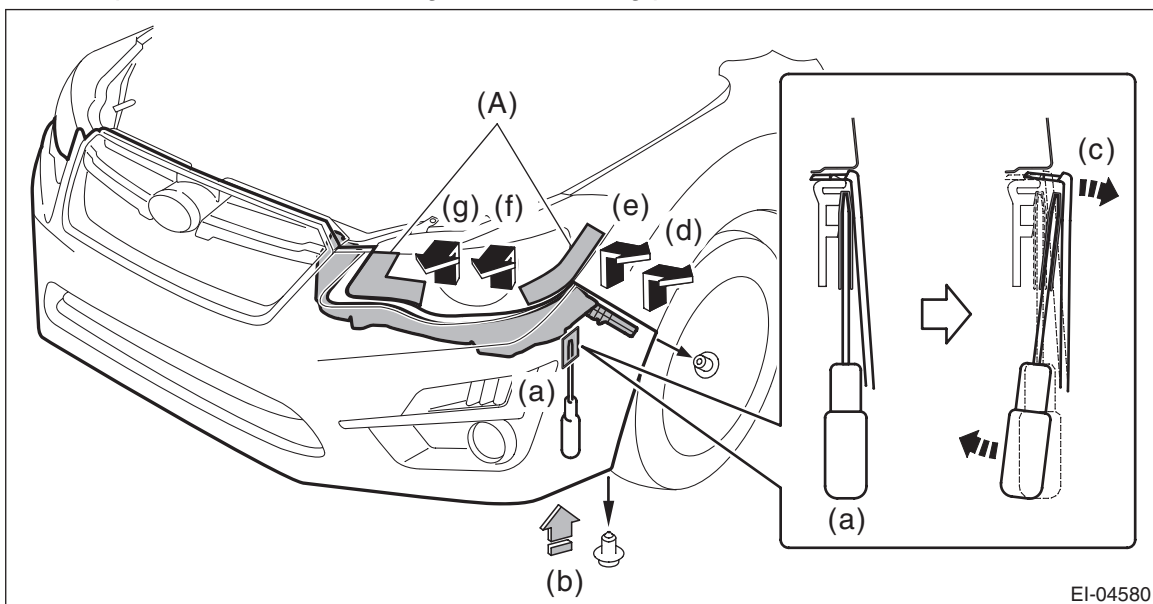
(6) Detach the flange section on the bumper face side from the bracket - front bumper side.

CAUTION:

Do not pull forcibly. It may damage the flange section on the bumper face - front side when it comes off from the claws of the bracket - front bumper.

NOTE:

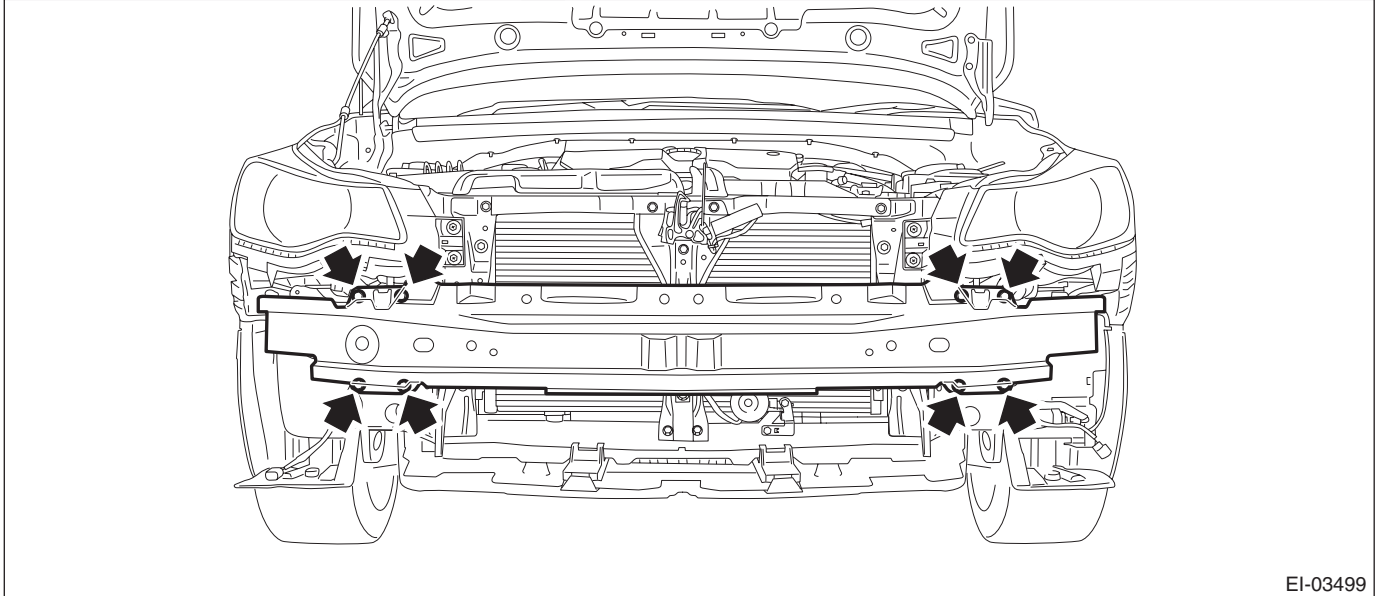
Remove the bumper face - front according to the following procedures.



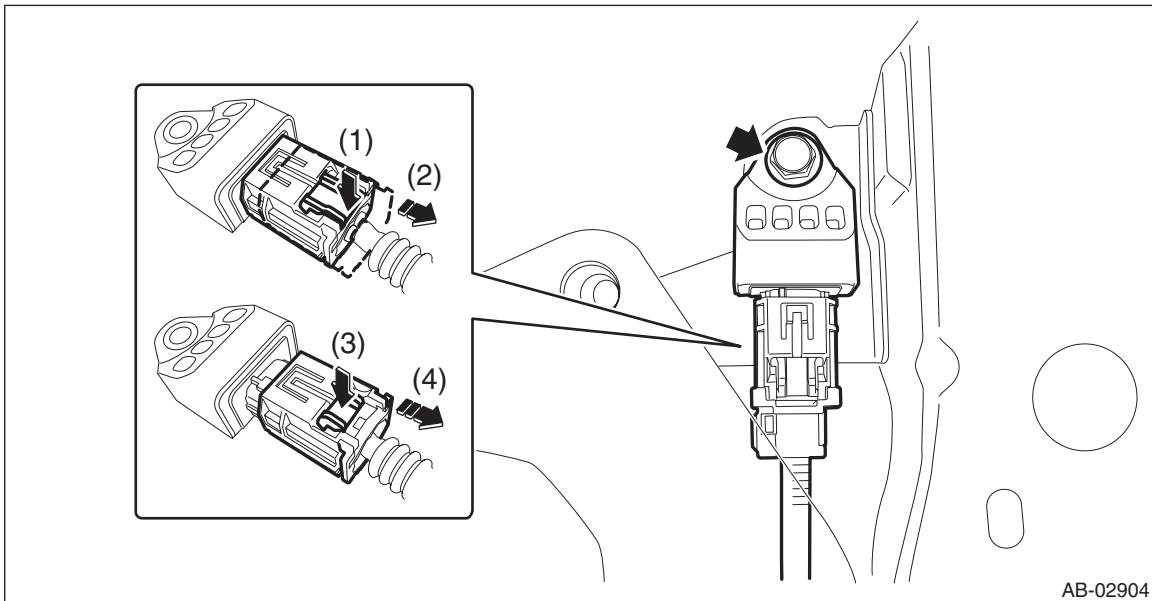
Front Sub Sensor

AIRBAG SYSTEM

1. Remove the clips, turn over the mud guard, and insert a flat tip screwdriver with protection for damage prevention into the clearance between bumper and bracket. (a)
2. Push out the bumper with the flat tip screwdriver while pushing up the bumper from below. (b), (c)
3. Release the engagement of clips in the order of (d) to (g) while pushing up the bumper from below.
4. Perform the same procedures to remove the opposite side.
- 4) Remove the bolts, and remove the bumper beam COMPL - front.



- 5) Remove the bolt, and then detach the front sub sensor. <Ref. to AB-20, FRONT SUB SENSOR, PROCEDURE, Airbag Connector.>



B: INSTALLATION

CAUTION:

- If the airbag has been activated, replace the front sub sensor with a new part.
- Do not reuse the bolt and nut.

Always replace with the specified new bolts and nuts.

- When installing the sensor, insert the set pin on the backside of the sensor into the hole on the body side securely.

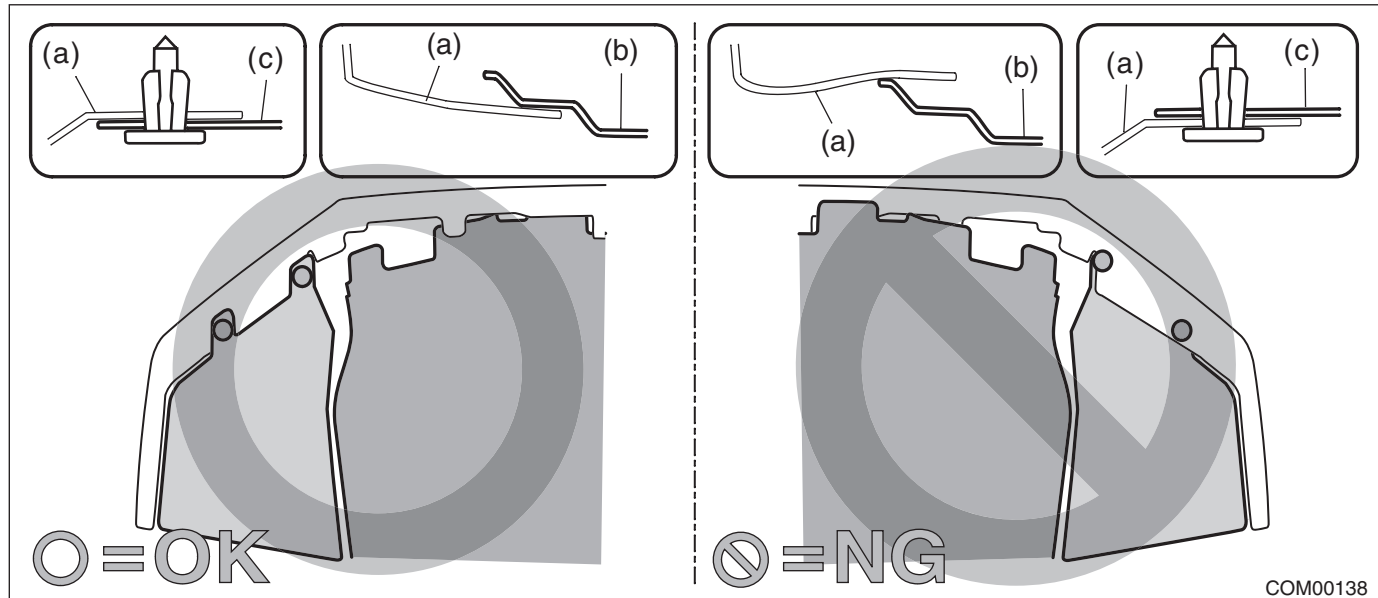
1) Before installation, inspect the following items and replace any faulty part with a new part.

- Front sub sensor damage
- Connector damage

2) Install each part in the reverse order of removal.

CAUTION:

- Install so that the front end of the under cover (b) comes inside the bumper face - front (a), and the front end of the mud guard (c) comes outside the bumper face - front (a).



COM00138

- Before installing the bumper face, match the claws on the bracket - front bumper with the engaging position of flange section on the bumper face side. If the engaging position is not correct, the flange section may be broken or the clearance between fender panel and bumper face may not be uniform.

Tightening torque:

Front sub sensor: 13 N·m (1.33 kgf-m, 9.6 ft-lb)

Bumper beam COMPL - front: 32 N·m (3.36 kgf-m, 24.3 ft-lb)