

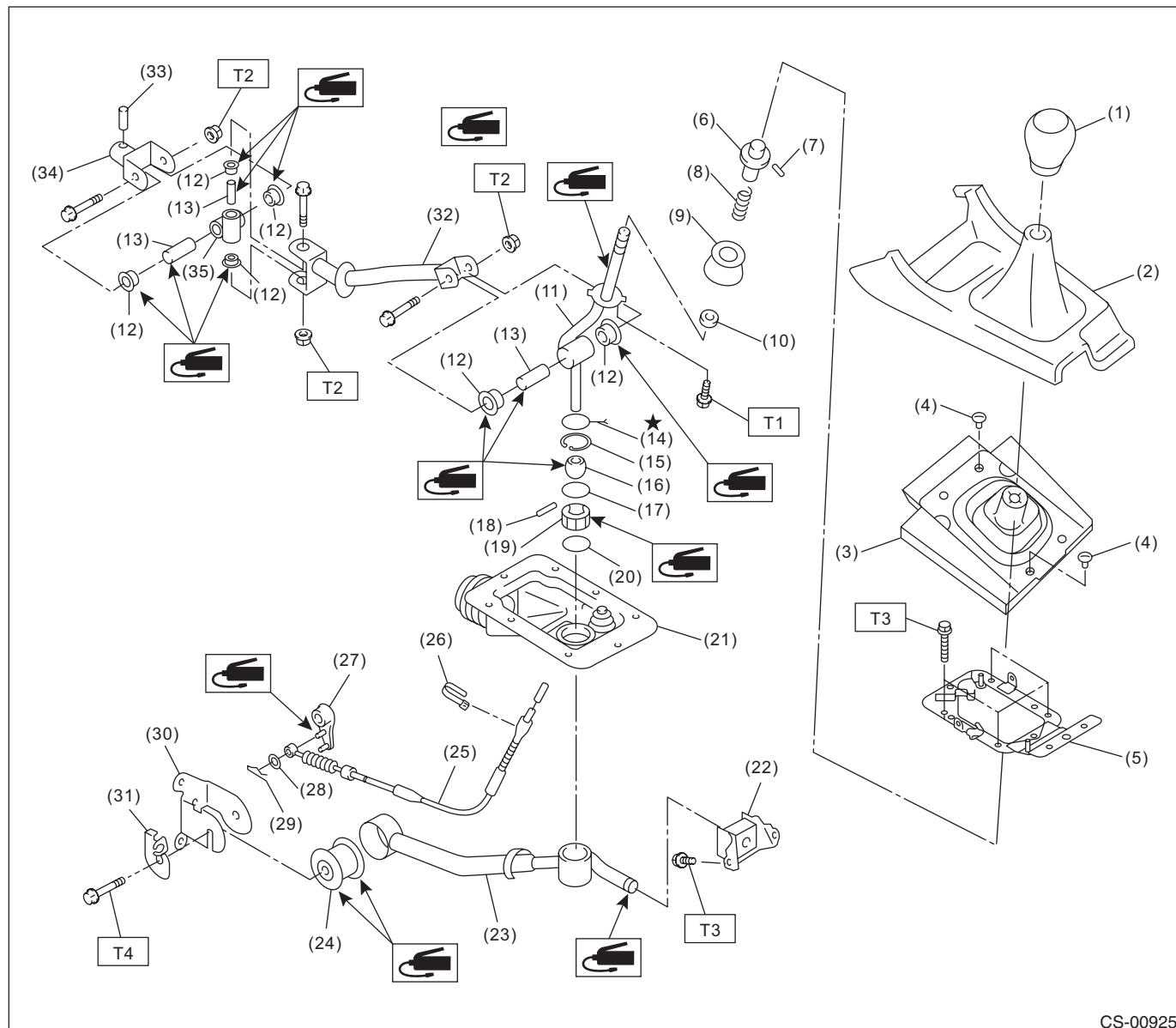
General Description

CONTROL SYSTEMS

1. General Description

A: SPECIFICATION

Item		Specifications
Swing torque of rod against lever	N (kgf, lbf)	3.7 (0.38, 0.83) or less

B: COMPONENT**1. 6MT GEAR SHIFT LEVER**

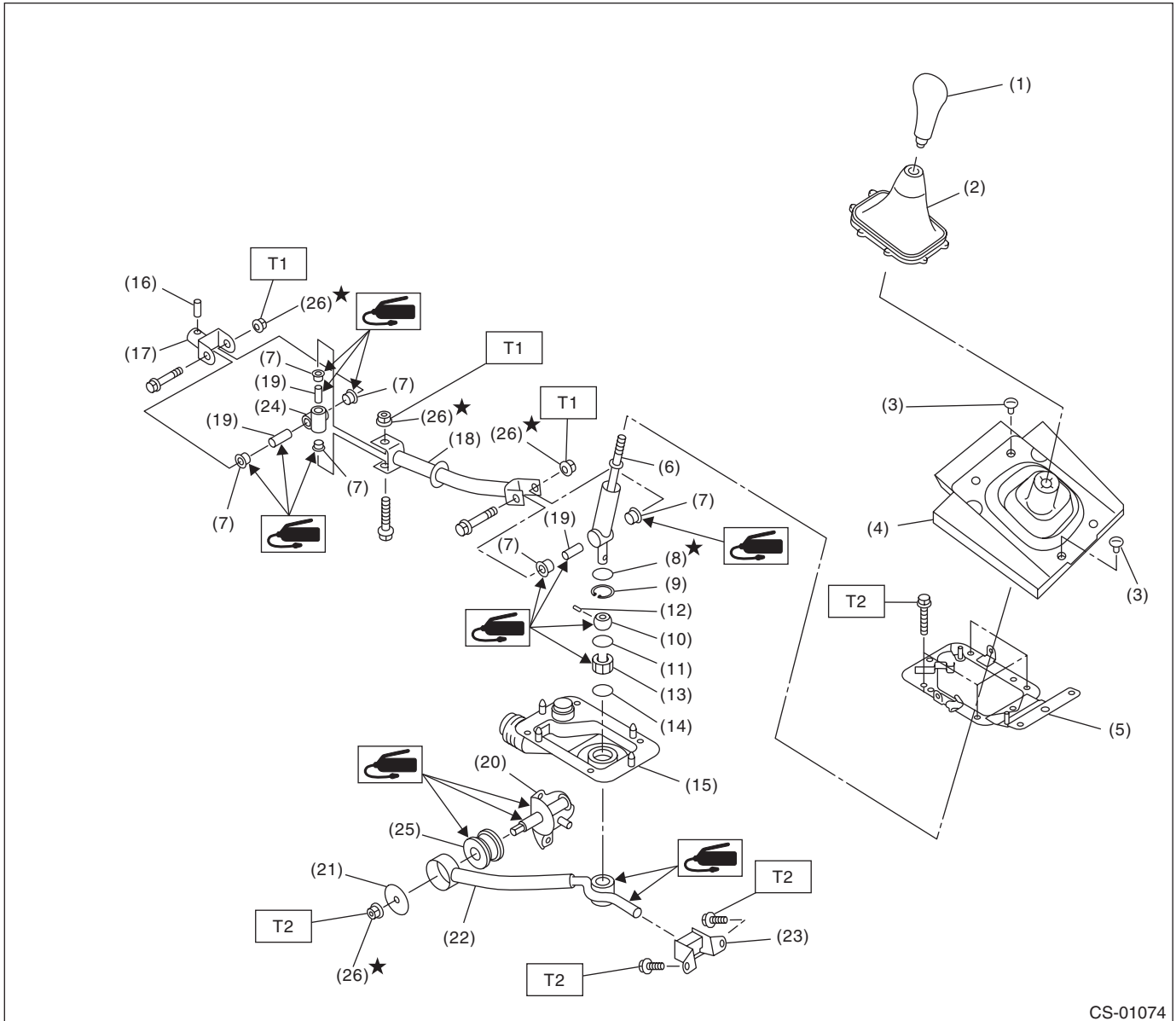
CS-00925

- | | | |
|-----------------------------|--------------------------|------------------|
| (1) Gear shift knob | (15) Snap ring | (29) Snap pin |
| (2) Console box front | (16) Bushing | (30) Bracket |
| (3) Boot and insulator ASSY | (17) O-ring | (31) Cable plate |
| (4) Clamp | (18) Spring pin | (32) Rod |
| (5) Plate COMPL | (19) Bushing | (33) Spring pin |
| (6) Slider | (20) O-ring | (34) Joint |
| (7) Spring pin | (21) Boot | (35) Boss |
| (8) Spring | (22) Cushion rubber | |
| (9) Holder | (23) Stay | |
| (10) Seat cushion | (24) Bushing | |
| (11) Lever | (25) Reverse check cable | |
| (12) Bushing | (26) Band clip | |
| (13) Spacer | (27) Reverse check lever | |
| (14) Lock wire | (28) Washer | |

Tightening torque: N·m (kgf-m, ft-lb)**T1: 1.3 (0.1, 1.0)****T2: 12 (1.2, 8.9)****T3: 18 (1.8, 13.3)****T4: 32 (3.3, 23.6)**

CONTROL SYSTEMS

2. 5MT GEAR SHIFT LEVER



- | | | |
|-----------------------------|-----------------|-------------------------------|
| (1) Gear shift knob | (11) O-ring | (21) Washer |
| (2) Console boot | (12) Spring pin | (22) Stay |
| (3) Clamp | (13) Bushing B | (23) Cushion rubber |
| (4) Boot and insulator ASSY | (14) O-ring | (24) Boss |
| (5) Plate COMPL | (15) Boot | (25) Bushing |
| (6) Lever | (16) Spring pin | (26) Self-locking nut |
| (7) Bushing | (17) Joint | |
| (8) Lock wire | (18) Rod | Tightening torque: N·m |
| (9) Snap ring | (19) Spacer | T1: 12 (1.2, 8.9) |
| (10) Bushing | (20) Bracket | T2: 18 (1.8, 13.3) |

Tightening torque: N·m (kgf-m, ft-lb)

T1: 12 (1.2, 8.9)

T2: 18 (1.8, 13.3)

C: CAUTION

- Wear appropriate work clothing, including a cap, protective goggles and protective shoes when performing any work.
- Remove contamination including dirt and corrosion before removal, installation or disassembly.
- Keep the disassembled parts in order and protect them from dust and dirt.
- Before removal, installation or disassembly, be sure to clarify the failure. Avoid unnecessary removal, installation, disassembly and replacement.
- Use SUBARU genuine fluid, grease etc. or equivalent. Do not mix fluid, grease, etc. of different grades or manufacturers.
- Be sure to tighten fasteners including bolts and nuts to the specified torque.
- Place shop jacks or rigid racks at the specified points.
- Apply grease onto sliding or revolving surfaces before installation.
- Before installing O-rings or snap rings, apply sufficient amount of fluid to avoid damage and deformation.
- Before securing a part in a vise, place cushioning material such as wood blocks, aluminum plate or cloth between the part and the vise.
- Before disconnecting electrical connectors, be sure to disconnect the negative terminal from battery.