

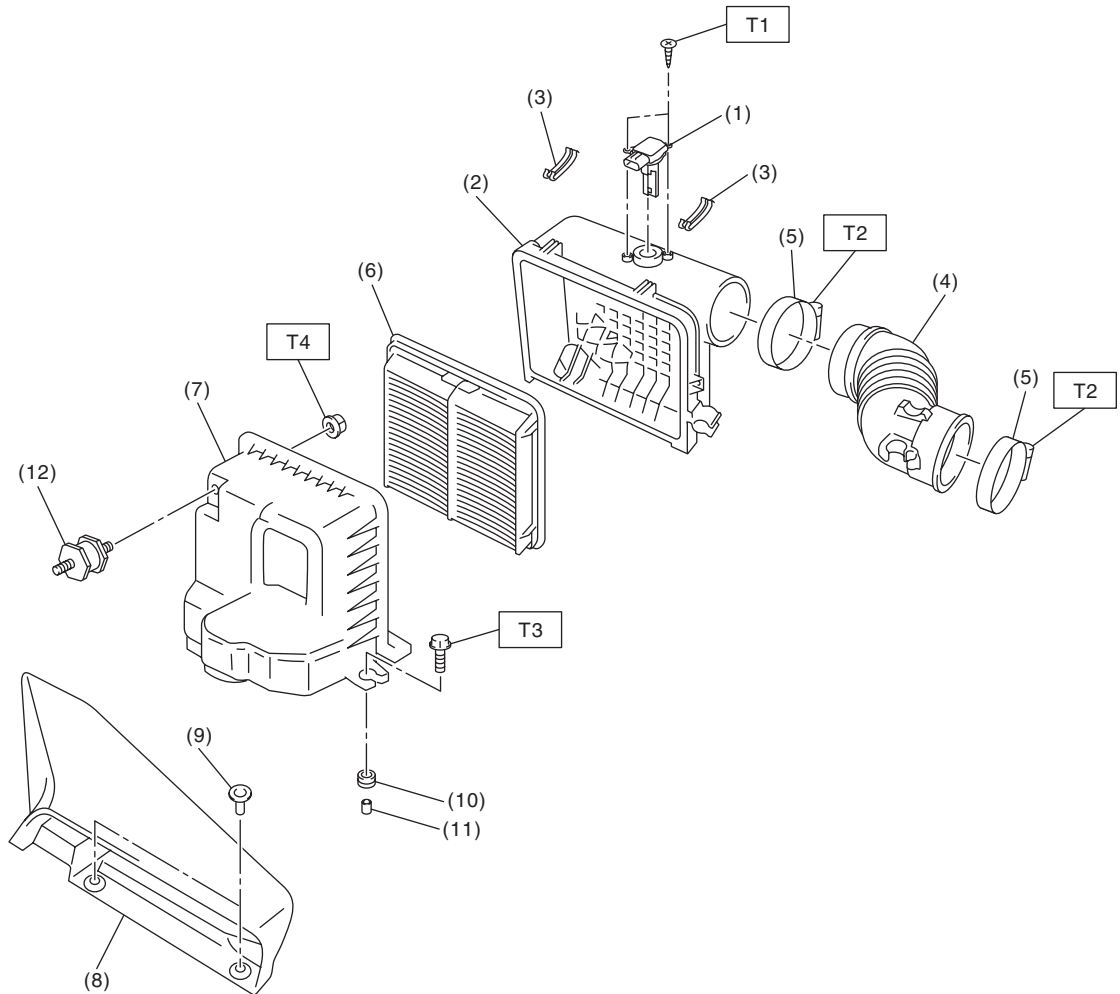
General Description

INTAKE (INDUCTION)

1. General Description

A: COMPONENT

1. AIR CLEANER



IN-02932

- | | |
|---|------------------------------|
| (1) Mass air flow and intake air temperature sensor | (7) Air cleaner case (front) |
| (2) Air cleaner case (rear) | (8) Air intake duct |
| (3) Clip | (9) Clip |
| (4) Air intake boot | (10) Cushion |
| (5) Clamp | (11) Spacer |
| (6) Air cleaner element | (12) Cushion |

Tightening torque: N·m (kgf-m, ft-lb)

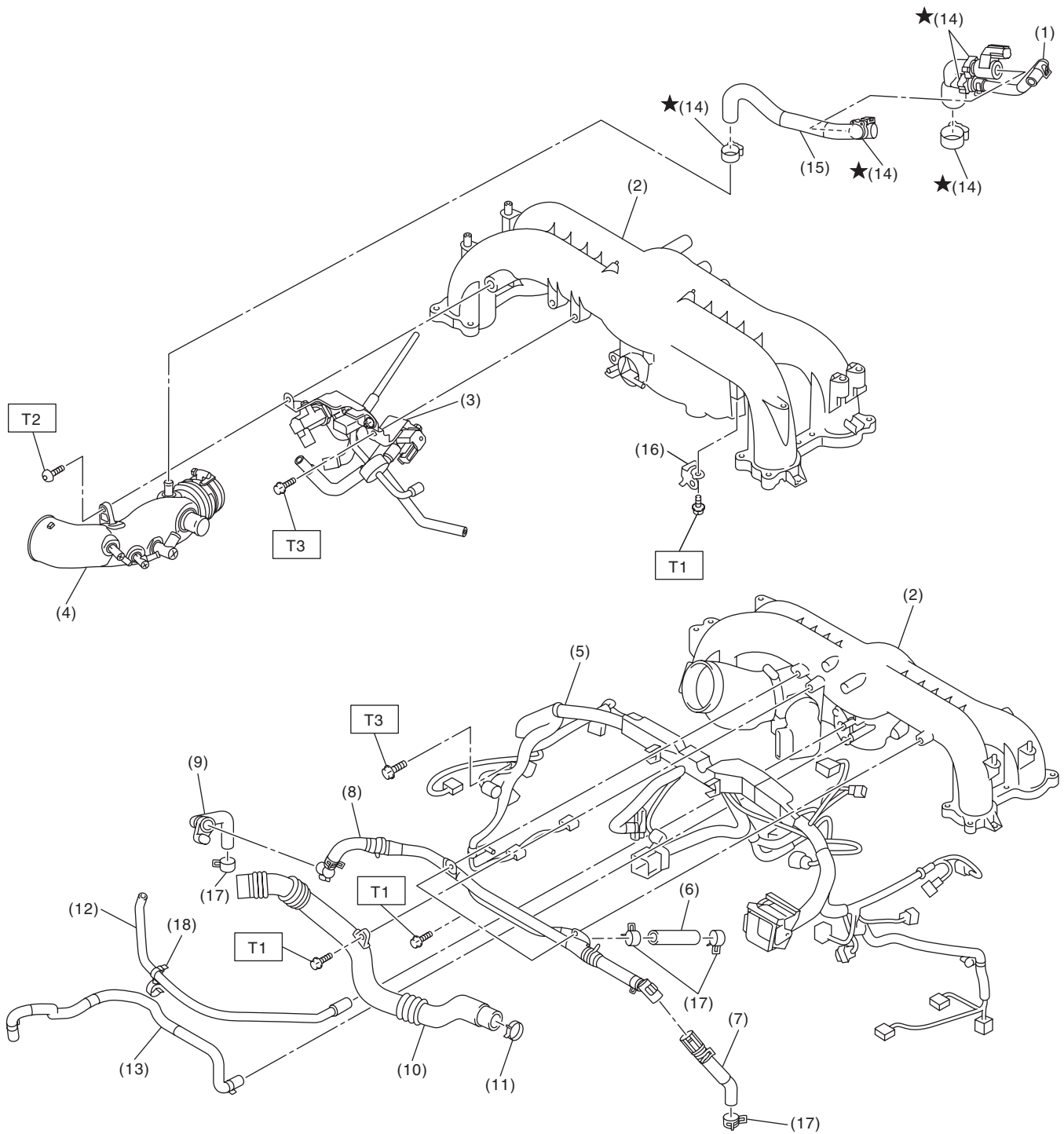
T1: 1 (0.1, 0.7)

T2: 2.5 (0.3, 1.8)

T3: 6 (0.6, 4.4)

T4: 7.5 (0.8, 5.5)

2. INTAKE DUCT



IN-03310

General Description

INTAKE (INDUCTION)

- | | |
|---------------------------------|--------------------------------|
| (1) PCV hose ASSY A | (9) PCV hose ASSY C |
| (2) Intake manifold | (10) Air by-pass pipe |
| (3) Solenoid valve bracket ASSY | (11) Clip |
| (4) Intake duct | (12) Vacuum hose |
| (5) Engine harness ASSY | (13) Brake booster vacuum hose |
| (6) Vacuum hose | (14) Clamp |
| (7) PCV hose ASSY B | (15) PCV hose ASSY D |
| (8) PCV pipe ASSY | (16) Solenoid valve bracket |

- (17) Clip
(18) Clip

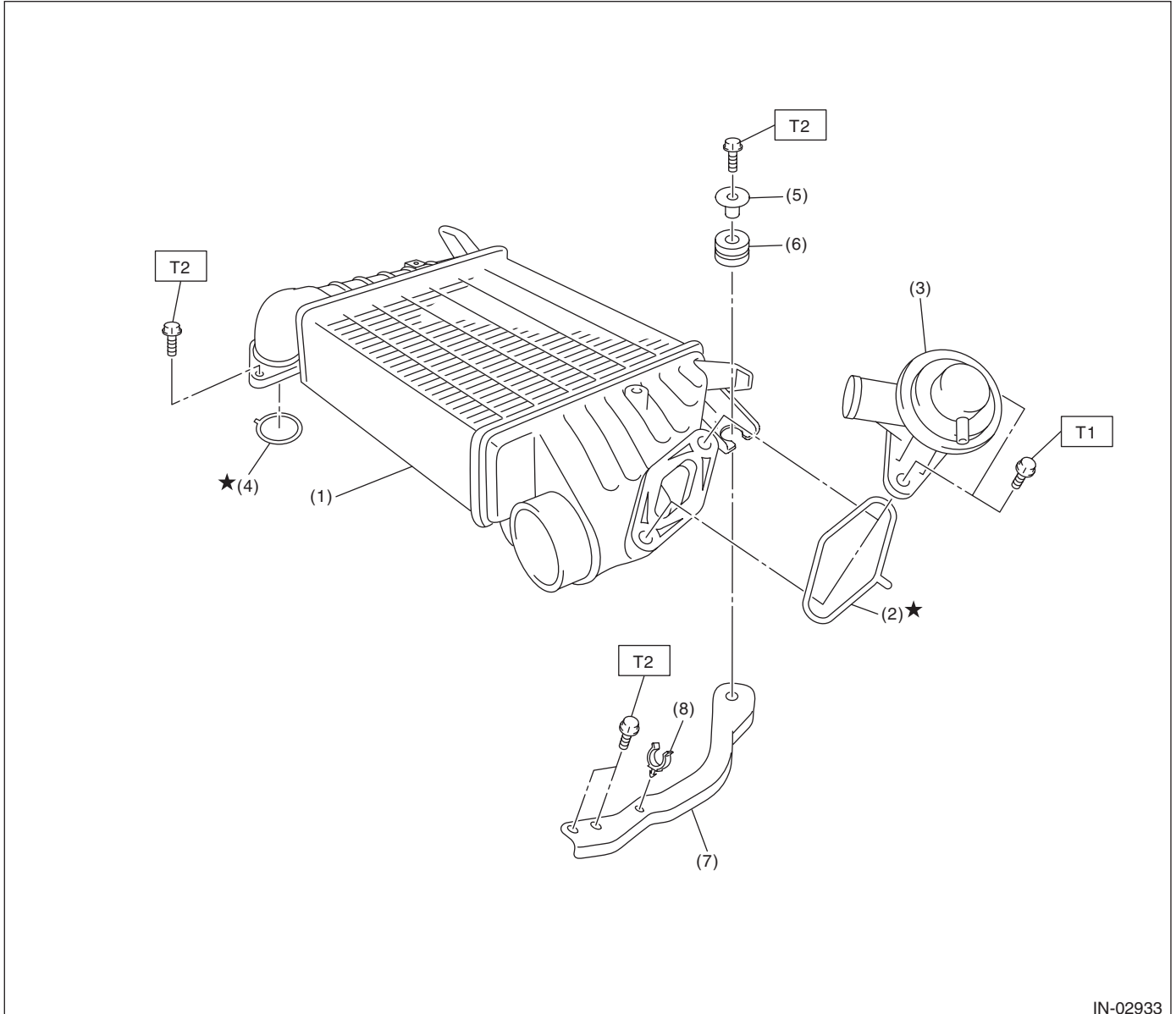
Tightening torque: N·m (kgf-m, ft-lb)

T1: 6.4 (0.7, 4.7)

T2: 17 (1.7, 12.5)

T3: 19 (1.9, 14.0)

3. INTERCOOLER



IN-02933

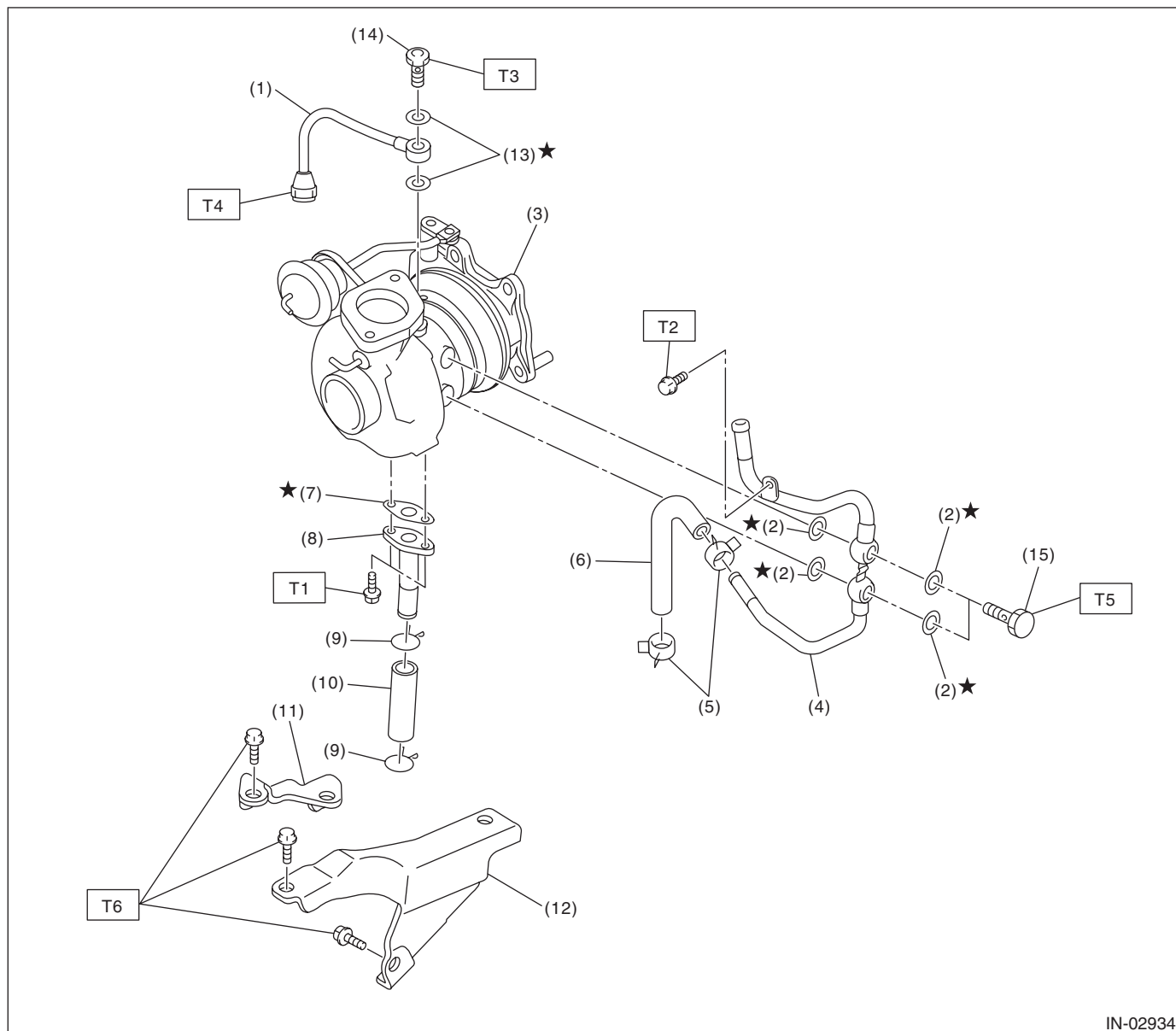
- | | |
|-----------------------|----------------------|
| (1) Intercooler | (5) Spacer |
| (2) O-ring | (6) Cushion |
| (3) Air by-pass valve | (7) Intercooler stay |
| (4) O-ring | (8) Clip |

Tightening torque: N·m (kgf-m, ft-lb)

T1: 6.5 (0.7, 4.8)

T2: 16 (1.6, 11.8)

4. TURBOCHARGER



IN-02934

- | | |
|-------------------------|---------------------------|
| (1) Oil inlet pipe | (9) Clip |
| (2) Gasket | (10) Oil outlet hose |
| (3) Turbocharger | (11) Turbocharger stay RH |
| (4) Water pipe | (12) Turbocharger stay LH |
| (5) Clip | (13) Gasket |
| (6) Engine coolant hose | (14) Union bolt A |
| (7) Gasket | (15) Union bolt B |
| (8) Oil outlet pipe | |

Tightening torque: N·m (kgf·m, ft·lb)

T1: 4.9 (0.5, 3.6)

T2: 7.8 (0.8, 5.8)

T3: 16 (1.6, 11.8)

T4: 20 (2.0, 14.8)

T5: 23 (2.3, 17.0)

T6: 33 (3.4, 24.3)

General Description

INTAKE (INDUCTION)

B: CAUTION

- Prior to starting work, pay special attention to the following:
 1. Always wear work clothes, a work cap, and protective shoes. Additionally, wear a helmet, protective goggles, etc. if necessary.
 2. Protect the vehicle using a seat cover, fender cover, etc.
 3. Prepare the service tools, clean cloth, containers to catch grease and oil, etc.
- Vehicle components are extremely hot immediately after driving. Be wary of receiving burns from heated parts.
- When performing a repair, identify the cause of trouble and avoid unnecessary removal, disassembly and replacement.
- Before disconnecting connectors of sensors or units, be sure to disconnect the ground cable from battery.
- Always use the jack-up point when the shop jacks or rigid racks are used to support the vehicle.
- Remove contamination including dirt and corrosion before removal, installation, disassembly or assembly.
- Keep the removed parts in order and protect them from dust and dirt.
- All removed parts, if to be reused, should be reinstalled in the original positions with attention to the correct directions, etc.
- Bolts, nuts and washers should be replaced with new parts as required.
- Be sure to tighten the fasteners including bolts and nuts to the specified torque.

C: PREPARATION TOOL

1. GENERAL TOOL

TOOL NAME	REMARKS
Mighty Vac	Used for checking waste gate actuator and air by-pass valve.