

# Oil Flow Control Solenoid Valve

FUEL INJECTION (FUEL SYSTEMS)

## 14.Oil Flow Control Solenoid Valve

### A: REMOVAL

Oil flow control solenoid valve is a unit with front camshaft cap.

Refer to “Camshaft” for removal procedures. <Ref. to ME(w/o STI)-59, REMOVAL, Camshaft.>

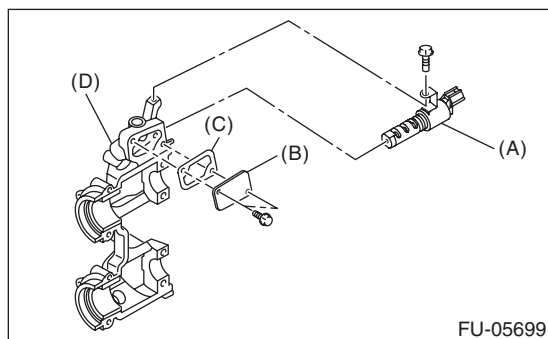
### B: INSTALLATION

Refer to “Camshaft” for installation procedure. <Ref. to ME(w/o STI)-61, INSTALLATION, Camshaft.>

### C: DISASSEMBLY

1) Remove the two mounting bolts securing oil return cover, and remove the oil return cover and gasket.

2) Remove the bolt securing oil flow control solenoid valve, and remove the oil flow control solenoid valve.



- (A) Oil flow control solenoid valve
- (B) Oil return cover
- (C) Gasket
- (D) Front camshaft cap

### D: ASSEMBLY

1) Install the oil flow control solenoid valve.

**Tightening torque:**

**6.4 N·m (0.7 kgf-m, 4.7 ft-lb)**

2) Apply liquid gasket to the two bolts securing oil return cover.

**Liquid gasket:**

**THREE BOND 1324 (Part No. 004403042) or equivalent**

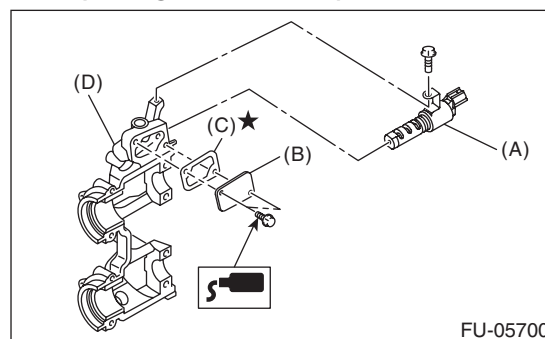
3) Attach the oil return cover and gasket.

**NOTE:**

Use a new gasket.

**Tightening torque:**

**9 N·m (0.9 kgf-m, 6.6 ft-lb)**

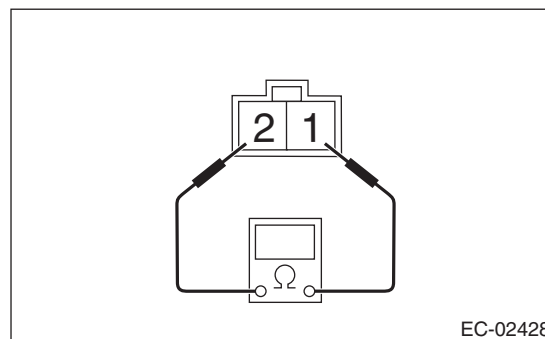


- (A) Oil flow control solenoid valve
- (B) Oil return cover
- (C) Gasket
- (D) Front camshaft cap

### E: INSPECTION

1) Check that the oil flow control solenoid valve has no deformation, cracks or other damages.

2) Measure the resistance between the oil flow control solenoid valve terminals.



Terminal No.	Standard
1 and 2	7.4±0.5 Ω (when 20°C (68°F))