

General Description

EMISSION CONTROL (AUX. EMISSION CONTROL DEVICES)

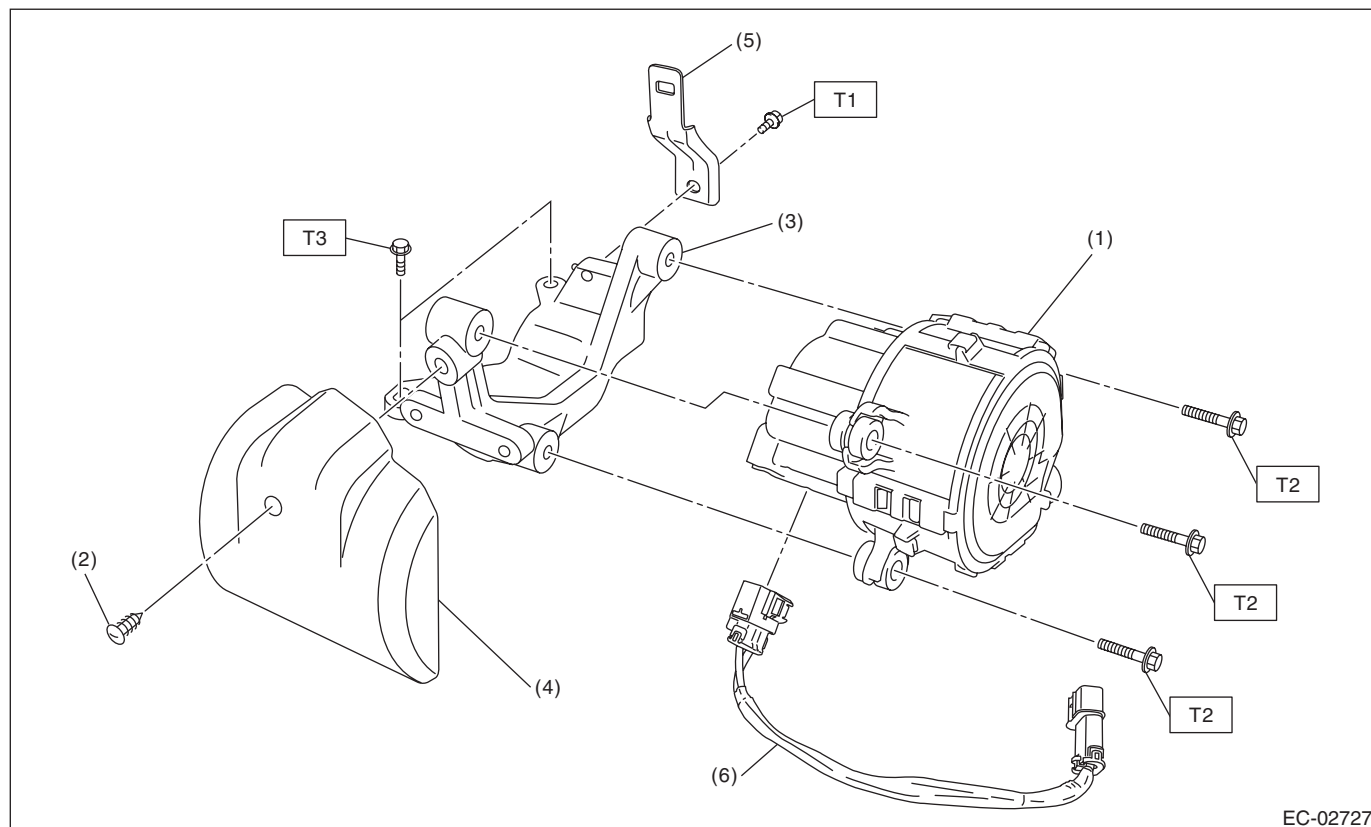
1. General Description

A: COMPONENT

1. CANISTER, PURGE CONTROL SOLENOID VALVE, PRESSURE CONTROL SOLENOID VALVE ASSEMBLY, SHUT VALVE, LEAK CHECK VALVE, AND DRAIN SEPARATOR

For components of canister, purge control solenoid valve, pressure control solenoid valve assembly, shut valve, leak check valve, and drain separator, refer to FU (w/o STI). <Ref. to FU(w/o STI)-3, COMPONENT, General Description.>

2. SECONDARY AIR PUMP



- | | |
|--------------------------------|--------------------------------|
| (1) Secondary air pump | (4) Secondary air pump cover |
| (2) Clip | (5) Harness stay |
| (3) Secondary air pump bracket | (6) Secondary air pump harness |

Tightening torque: N·m (kgf-m, ft-lb)

T1: 6.4 (0.7, 4.7)

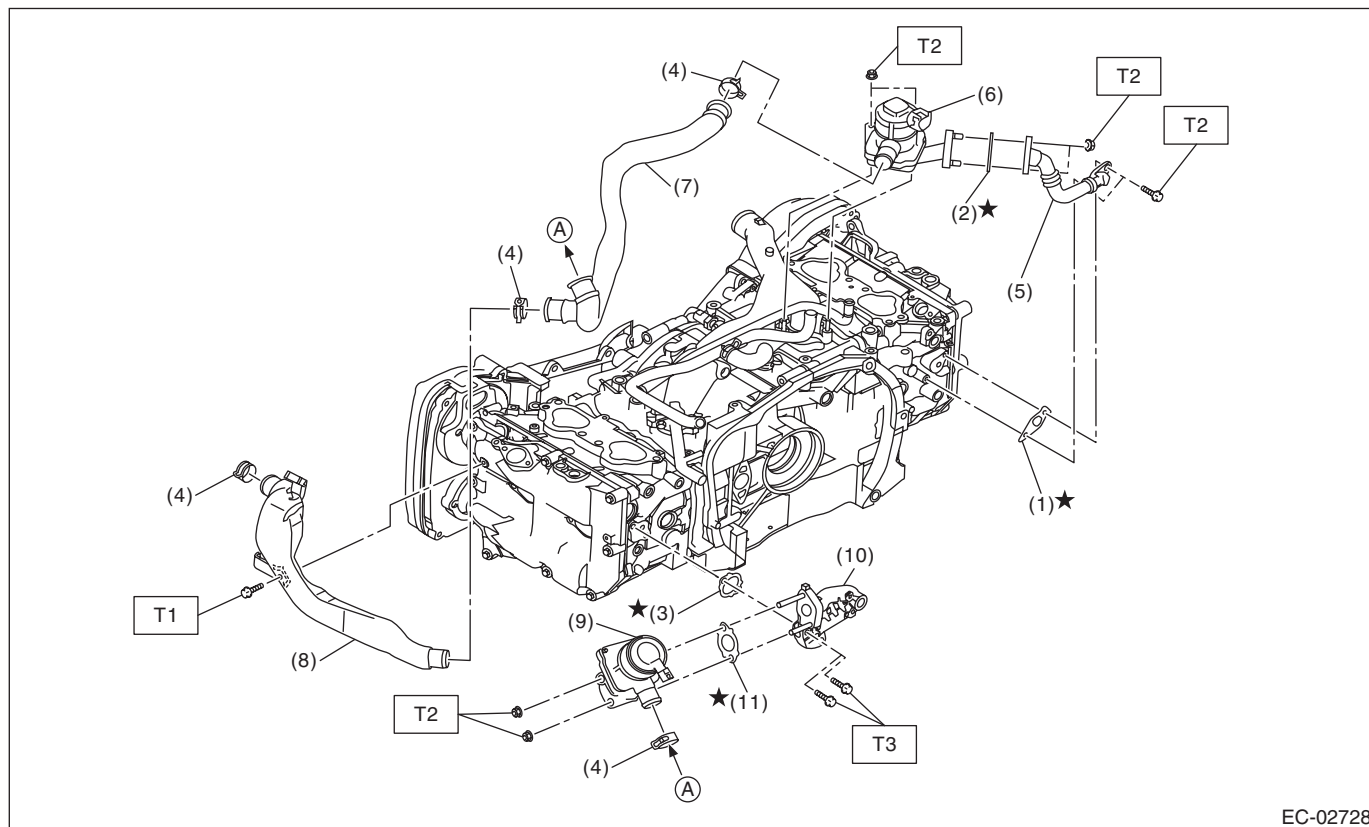
T2: 9 (0.9, 6.6)

T3: 19 (1.9, 14.0)

General Description

EMISSION CONTROL (AUX. EMISSION CONTROL DEVICES)

3. SECONDARY AIR COMBINATION VALVE



- | | |
|--|--|
| (1) Gasket | (7) Air duct A |
| (2) Gasket | (8) Air duct B |
| (3) Gasket | (9) Secondary air combination valve LH |
| (4) Clip | (10) Secondary air pipe LH |
| (5) Secondary air pipe RH | (11) Gasket |
| (6) Secondary air combination valve RH | |

Tightening torque: N·m (kgf-m, ft-lb)

T1: 6.4 (0.7, 4.7)

T2: 9 (0.9, 6.6)

T3: 19 (1.9, 14.0)

General Description

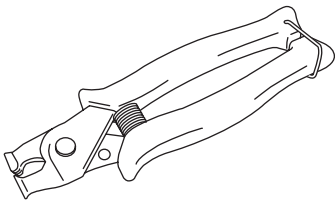
EMISSION CONTROL (AUX. EMISSION CONTROL DEVICES)

B: CAUTION

- Prior to starting work, pay special attention to the following:
 1. Always wear work clothes, a work cap, and protective shoes. Additionally, wear a helmet, protective goggles, etc. if necessary.
 2. Protect the vehicle using a seat cover, fender cover, etc.
 3. Prepare the service tools, clean cloth, containers to catch grease and oil, etc.
- Vehicle components are extremely hot immediately after driving. Be wary of receiving burns from heated parts.
- When performing a repair, identify the cause of trouble and avoid unnecessary removal, disassembly and replacement.
- Before disconnecting connectors of sensors or units, be sure to disconnect the ground cable from battery.
- Always use the jack-up point when the shop jacks or rigid racks are used to support the vehicle.
- Remove contamination including dirt and corrosion before removal, installation, disassembly or assembly.
- Keep the removed parts in order and protect them from dust and dirt.
- All removed parts, if to be reused, should be reinstalled in the original positions with attention to the correct directions, etc.
- Bolts, nuts and washers should be replaced with new parts as required.
- Be sure to tighten the fasteners including bolts and nuts to the specified torque.

C: PREPARATION TOOL

1. SPECIAL TOOL

ILLUSTRATION	TOOL NUMBER	DESCRIPTION	REMARKS
 ST18353AA000	18353AA000	CLAMP PLIERS	<ul style="list-style-type: none">• Used for removing and installing the PCV hose.• This tool is made by the French company CAILLAU. (code) 54.0.000.205 To make it easier to obtain, it has been provided with a tool number.

2. GENERAL TOOL

TOOL NAME	REMARKS
Circuit tester	Used for measuring resistance and voltage.
Mighty Vac	Used for inspecting the fuel tank pressure sensor.