

General Description

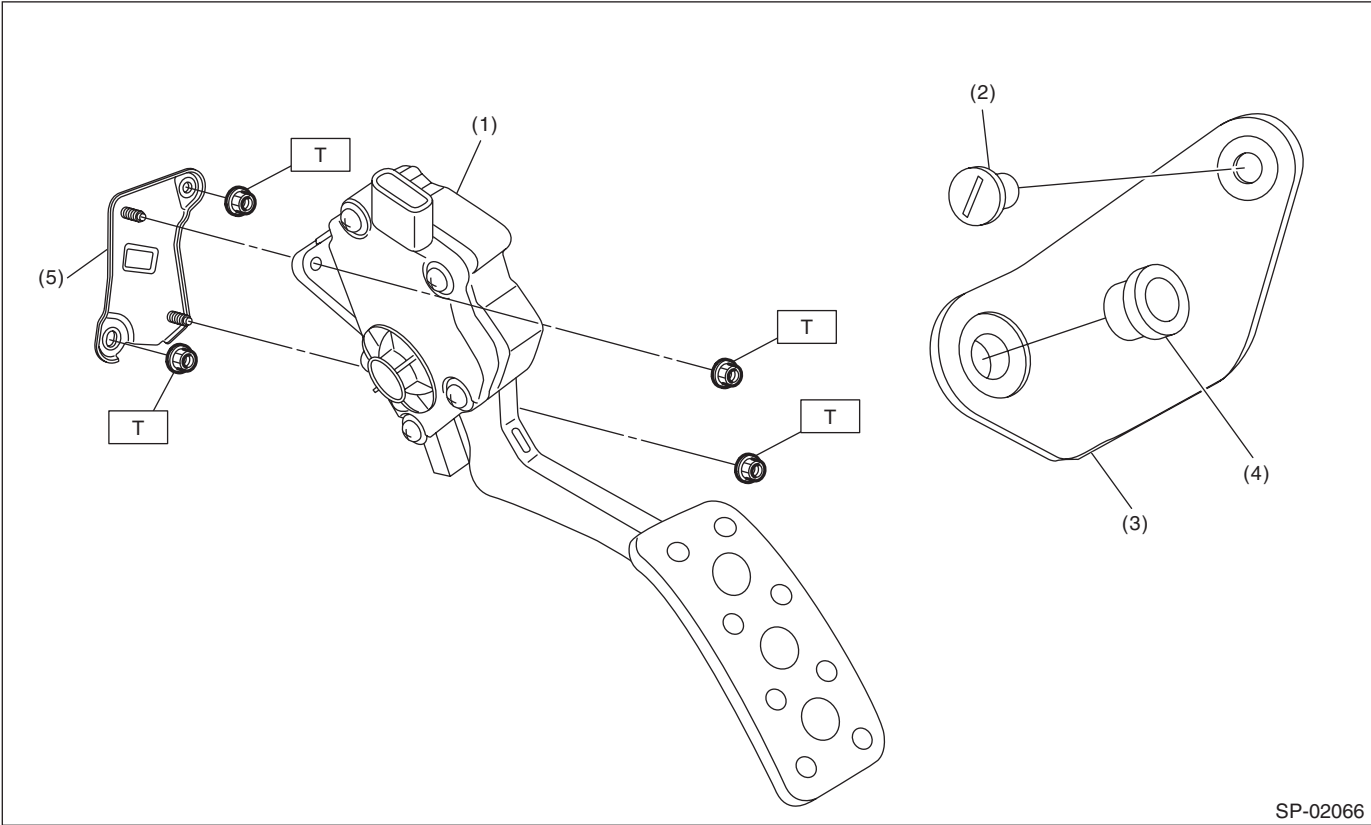
SPEED CONTROL SYSTEMS

1. General Description

A: SPECIFICATION

| | | | |
|-------------------|--------|--------------|-----------------------------|
| Accelerator pedal | Stroke | At pedal pad | 50 — 59 mm (1.97 — 2.32 in) |
|-------------------|--------|--------------|-----------------------------|

B: COMPONENT



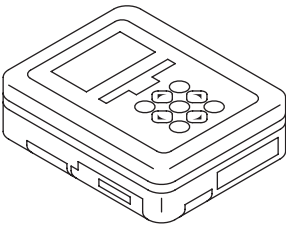
- | | |
|----------------------------|-------------------------------|
| (1) Accelerator pedal ASSY | (4) Accelerator stopper |
| (2) Clip | (5) Accelerator pedal bracket |
| (3) Accelerator plate | |

Tightening torque: N·m (kgf-m, ft-lb)
T: 18 (1.8, 13.3)

C: CAUTION

- Prior to starting work, pay special attention to the following:
 1. Always wear work clothes, a work cap, and protective shoes. Additionally, wear a helmet, protective goggles, etc. if necessary.
 2. Protect the vehicle using a seat cover, fender cover, etc.
 3. Prepare the service tools, clean cloth, containers to catch grease and oil, etc.
- Vehicle components are extremely hot immediately after driving. Be wary of receiving burns from heated parts.
- When performing a repair, identify the cause of trouble and avoid unnecessary removal, disassembly and replacement.
- Before disconnecting connectors of sensors or units, be sure to disconnect the ground cable from battery.
- Always use the jack-up point when the shop jacks or rigid racks are used to support the vehicle.
- Remove contamination including dirt and corrosion before removal, installation, disassembly or assembly.
- Keep the removed parts in order and protect them from dust and dirt.
- All removed parts, if to be reused, should be reinstalled in the original positions with attention to the correct directions, etc.
- Bolts, nuts and washers should be replaced with new parts as required.
- Be sure to tighten the fasteners including bolts and nuts to the specified torque.

D: PREPARATION TOOL**1. SPECIAL TOOL**

| ILLUSTRATION | TOOL NUMBER | DESCRIPTION | REMARKS |
|--|-------------|-------------------------------|--|
|  ST1B022XU0 | 1B022XU0 | SUBARU SELECT MONITOR III KIT | Used for inspecting the accelerator pedal. |

2. GENERAL TOOL

| TOOL NAME | REMARKS |
|----------------|-----------------------------|
| Circuit tester | Used for measuring voltage. |