

General Description

PARKING BRAKE

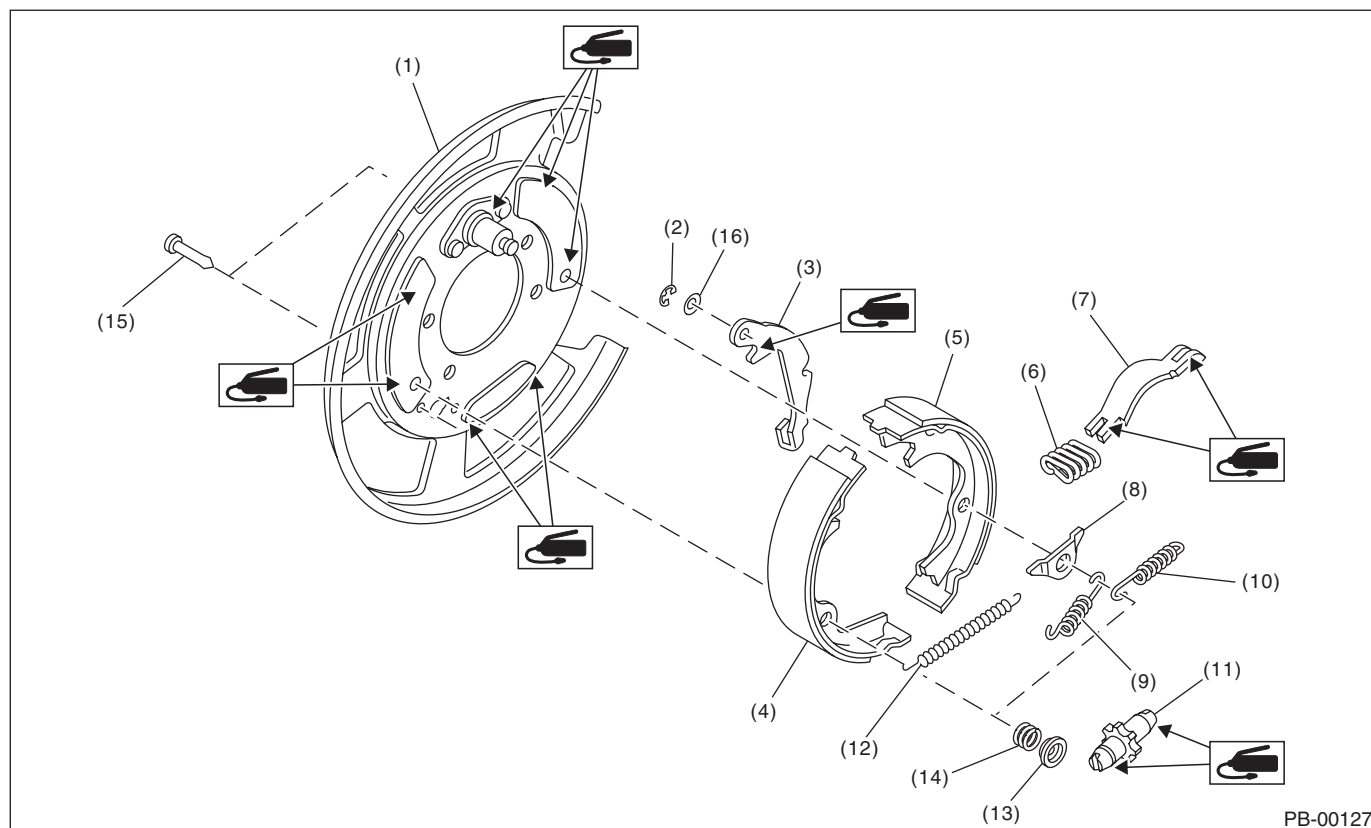
1. General Description

A: SPECIFICATION

Model		Rear disc brake
Type		Mechanical, drum in disc rear brakes
Effective drum diameter	mm (in)	190 (7.48)
Lining dimensions (Length × Width × Thickness)	mm (in)	165.8 × 30.0 × 2.8 (6.53 × 1.181 × 0.11)
Clearance adjustment		Manual adjustment
Lever stroke	Notches/N (kgf, lbf)	7 — 8/200 (20.4, 45)

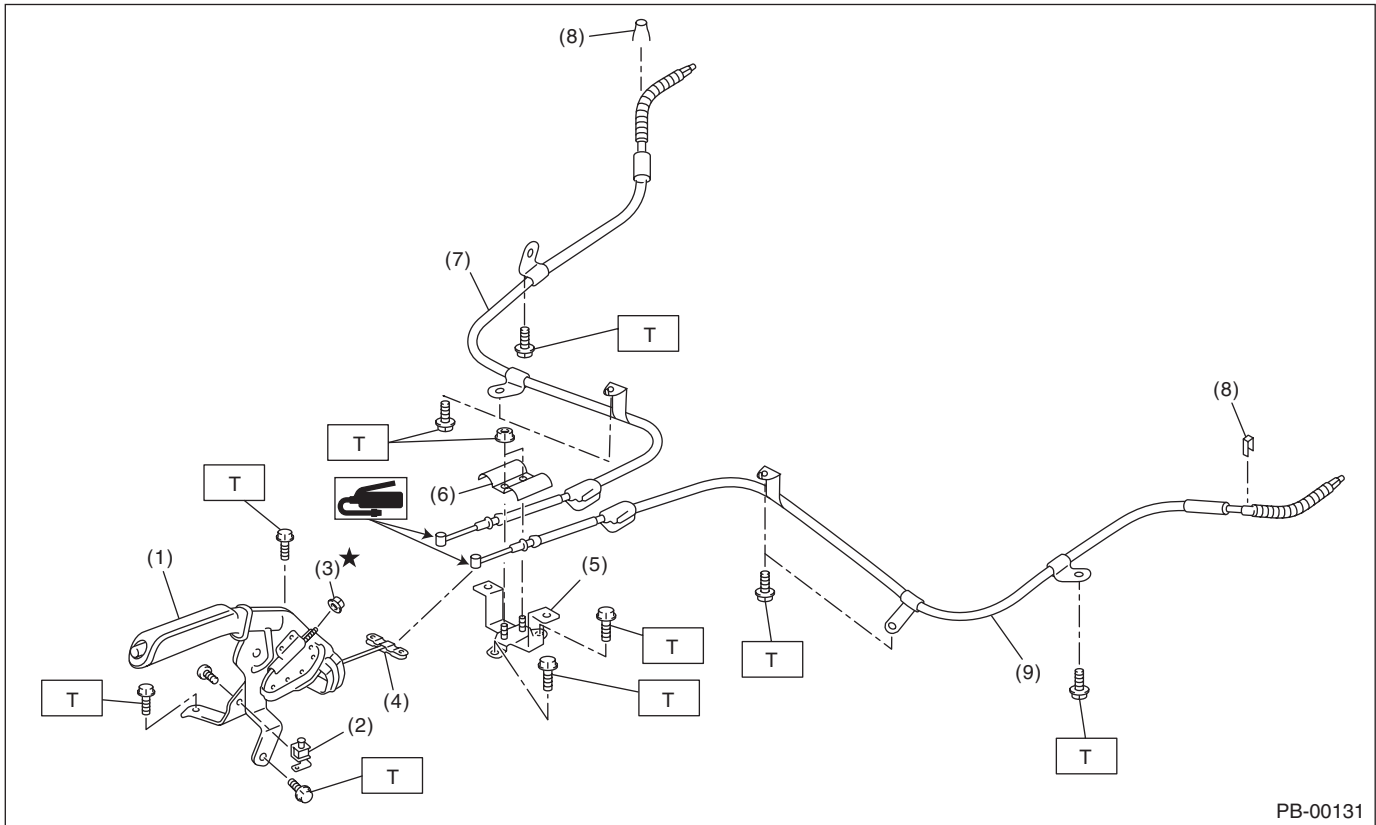
B: COMPONENT

1. PARKING BRAKE (REAR DISC BRAKE)



- | | | |
|------------------------------------|------------------------------|----------------------------|
| (1) Back plate | (7) Strut | (13) Shoe hold-down cup |
| (2) Retainer | (8) Shoe guide plate | (14) Shoe hold-down spring |
| (3) Lever | (9) Primary return spring | (15) Shoe hold-down pin |
| (4) Parking brake shoe (primary) | (10) Secondary return spring | (16) Wave washer |
| (5) Parking brake shoe (secondary) | (11) Adjuster | |
| (6) Strut spring | (12) Adjusting spring | |

2. PARKING BRAKE LEVER & CABLE



PB-00131

- | | | |
|--------------------------------------|----------------------------|----------------------------|
| (1) Parking brake lever | (5) Bracket | (9) Parking brake cable LH |
| (2) Parking brake switch | (6) Clamp | |
| (3) Adjusting nut (self-locking nut) | (7) Parking brake cable RH | |
| (4) Equalizer | (8) Clamp | |

Tightening torque: N·m (kgf-m, ft-lb)
T: 18 (1.84, 13.3)

C: CAUTION

- Wear appropriate work clothing, including a helmet, protective goggles and protective shoes when performing any work.
- Before removal, installation or disassembly, be sure to clarify the failure. Avoid unnecessary removal, installation, disassembly and replacement.
- Vehicle components are extremely hot after driving. Be wary of receiving burns from heated parts.
- Use SUBARU genuine grease etc. or equivalent. Do not mix grease etc. of different grades or manufacturers.
- Be sure to tighten fasteners including bolts and nuts to the specified torque.
- Place shop jacks or rigid racks at the specified points.
- Make sure grease does not come into contact with the parking shoes.