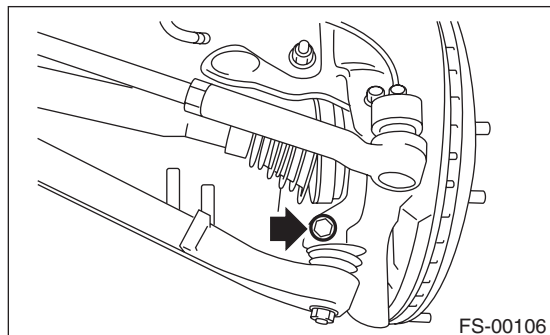


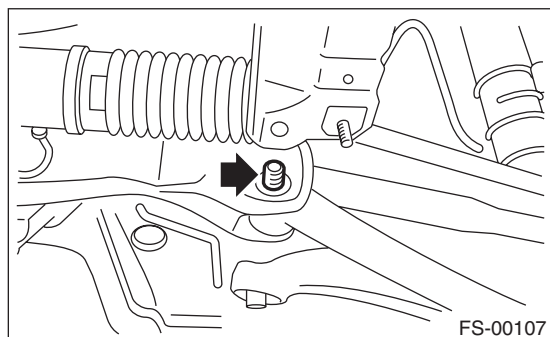
### 6. Front Arm

#### A: REMOVAL

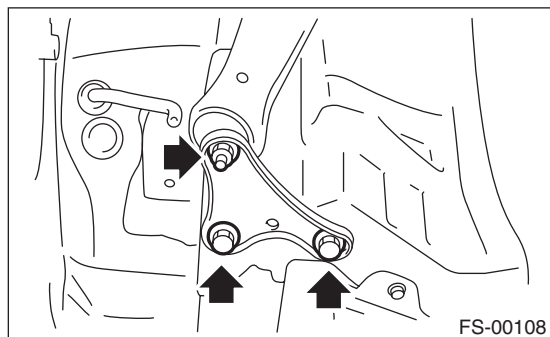
- 1) Lift up the vehicle, and then remove the front wheels.
- 2) Remove the front crossmember support plate. <Ref. to FS-16, REMOVAL, Front Crossmember Support Plate.>
- 3) Remove the front stabilizer. <Ref. to FS-17, REMOVAL, Front Stabilizer.>
- 4) Remove the ball joint of front arm.



- 5) Remove the nut securing the front arm to crossmember. (Do not remove the bolt.)



- 6) Remove the front arm support plate.



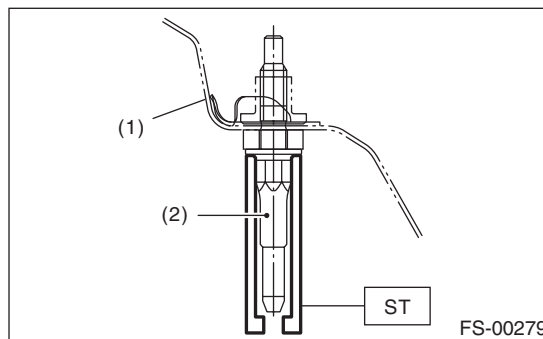
- 7) Remove the bolt securing front arm to crossmember and pull the front arm out of the crossmember.

- 8) To remove the stud bolt, use the ST. (Except for STI model)

#### CAUTION:

**Do not remove the stud bolt unnecessarily. Always replace the parts with new parts when removed.**

ST 20299AG020 STUD BOLT SOCKET



- (1) Vehicle body
- (2) Stud bolt

#### B: INSTALLATION

- 1) Using the ST, install the stud bolt. (Except for STI model)

ST 20299AG020 STUD BOLT SOCKET

#### Tightening torque:

**110 N·m (11.2 kgf-m, 81.1 ft-lb)**

- 2) Using new bolts and self-locking nuts, temporarily tighten the front arm to crossmember.

- 3) Attach the support plate.

- Except for STI model

Secure the front arm to body, and then install the support plate with new bolts and self-locking nuts.

- STI model

Secure the front arm to body, and then install the support plate with new bolts.

#### Tightening torque:

##### Support plate to Front arm:

**Except for STI model: 110 N·m (11.2 kgf-m, 81.1 ft-lb)**

**STI model: 140 N·m (14.3 kgf-m, 103.3 ft-lb)**

##### Support plate to Body:

**150 N·m (15.3 kgf-m, 110.6 ft-lb)**

4) Install the ball joint into housing.

**Tightening torque:**

**50 N·m (5.1 kgf-m, 36.9 ft-lb)**

5) Install the stabilizer. <Ref. to FS-17, INSTALLATION, Front Stabilizer.>

6) Install the front wheels.

7) Lower the vehicle from lift, and tighten the bolt which secures the front arm to crossmember with wheels in full contact with the ground and the vehicle at curb weight.

**Tightening torque:**

**95 N·m (9.7 kgf-m, 70.1 ft-lb)**

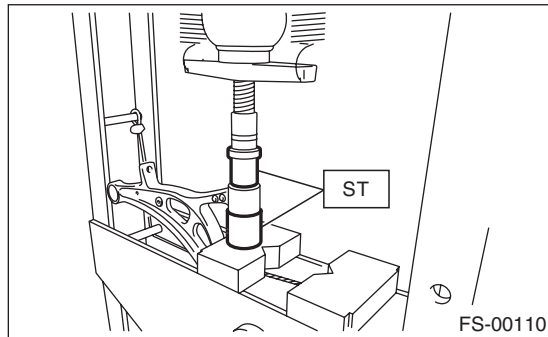
8) Inspect the wheel alignment and adjust if necessary.

## C: DISASSEMBLY

### 1. FRONT BUSHING

Using the ST and a press, remove the front bushing.

ST 927680000 INSTALLER & REMOVER SET



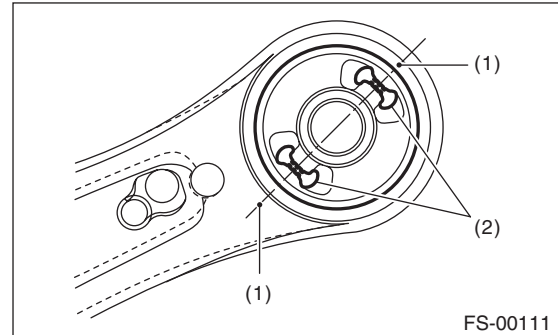
### 2. REAR BUSHING

#### Steel front arm

1) Put an alignment mark on the front arm based on the center of rear bushing recess portion.

**CAUTION:**

**Always put an alignment mark for aligning the position on bushing installation.**



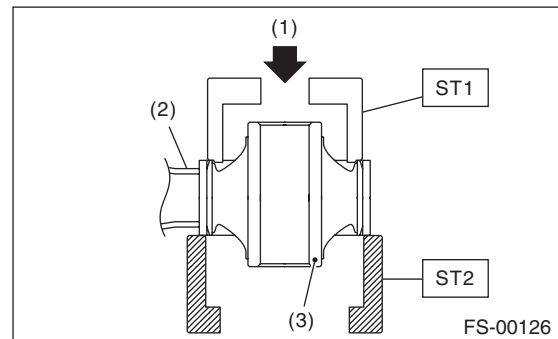
(1) Put an alignment mark.

(2) Recess section

2) Using the ST and a press, remove the rear bushing.

ST1 20299AG000 REMOVER

ST2 20299AG010 BASE



(1) Press

(2) Front arm

(3) Rear bushing

# Front Arm

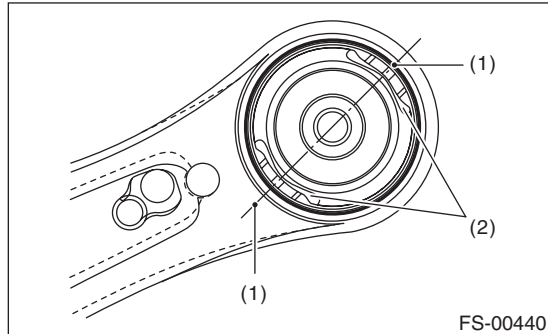
## FRONT SUSPENSION

### Aluminum front arm

1) Put an alignment mark on the front arm based on the center of pillow ball bushing recess portion.

#### CAUTION:

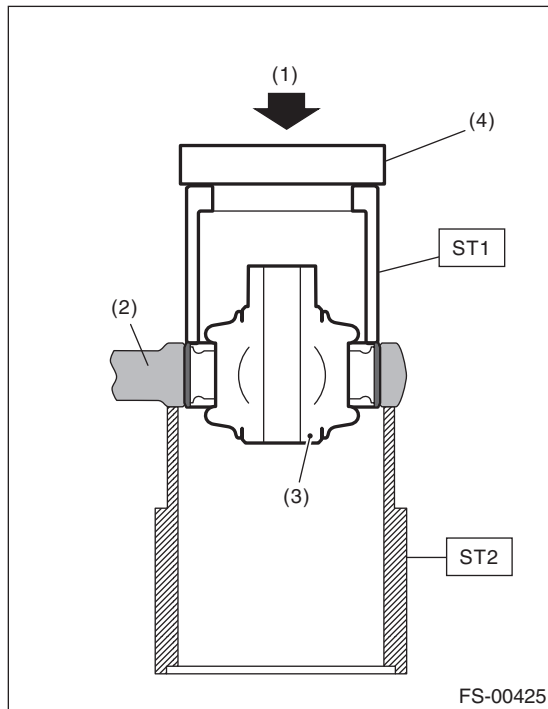
**Always put an alignment mark for aligning the position on bushing installation.**



- (1) Put an alignment mark.
- (2) Recess section

2) Using the ST and a press, remove the pillow ball bushing.

ST1 20099AE020 INSTALLER & REMOVER  
ST2 28099PA010 HOUSING STAND



- (1) Press
- (2) Front arm
- (3) Pillow ball bushing
- (4) Plate

#### NOTE:

Place the plate on the ST1 to use the press.

## D: ASSEMBLY

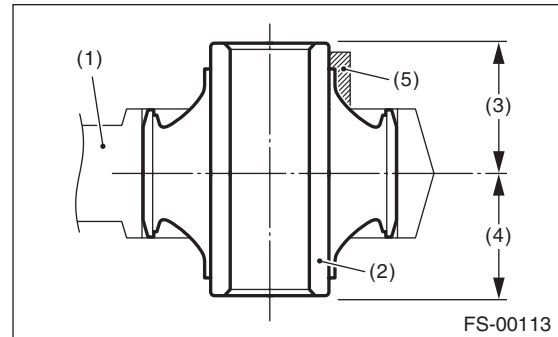
### 1. FRONT BUSHING

Assemble each part in the reverse order of disassembly.

### 2. REAR BUSHING

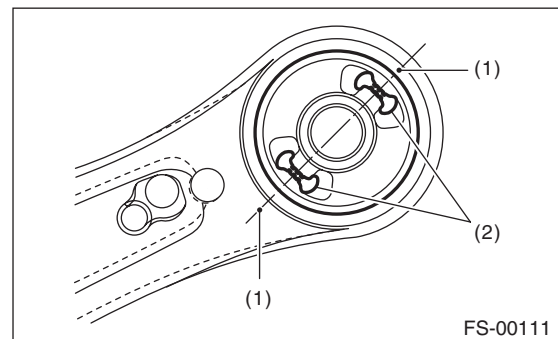
#### Steel front arm

1) Install the rear bushing with its longer inner cylinder facing upward and the shorter facing downward and protruding part rearward as shown in the figure.



- (1) Front arm
- (2) Bushing inner cylinder
- (3) Longer
- (4) Shorter
- (5) Protrusion portion

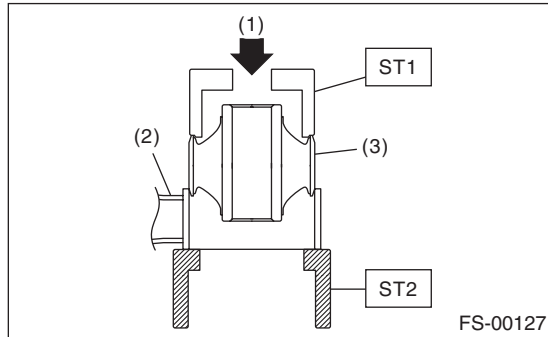
2) Align the center of rear bushing recess portion with the aligning mark on the front arm.



- (1) Alignment mark
- (2) Recess section

3) Using the ST and a press, install the rear bushing.

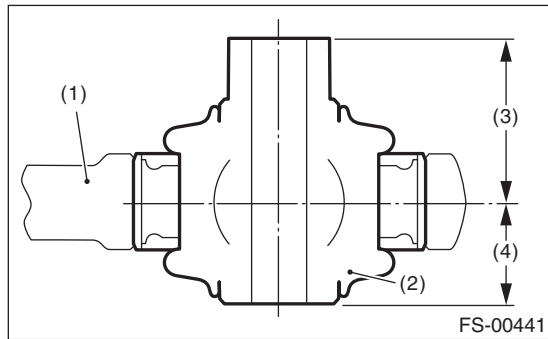
ST1 20299AG000 REMOVER  
ST2 20299AG010 BASE



- (1) Press
- (2) Front arm
- (3) Rear bushing

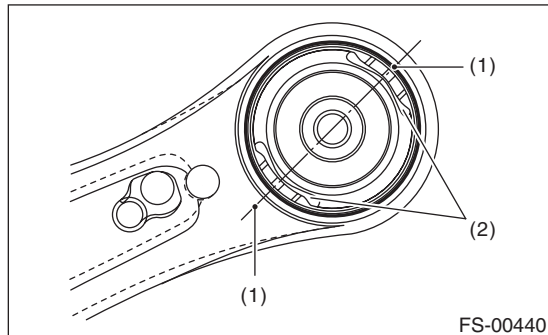
### Aluminum front arm

1) Install the pillow ball bushing with its longer inner cylinder facing upward and the shorter facing downward as shown in the figure.



- (1) Front arm
- (2) Bushing inner cylinder
- (3) Longer
- (4) Shorter

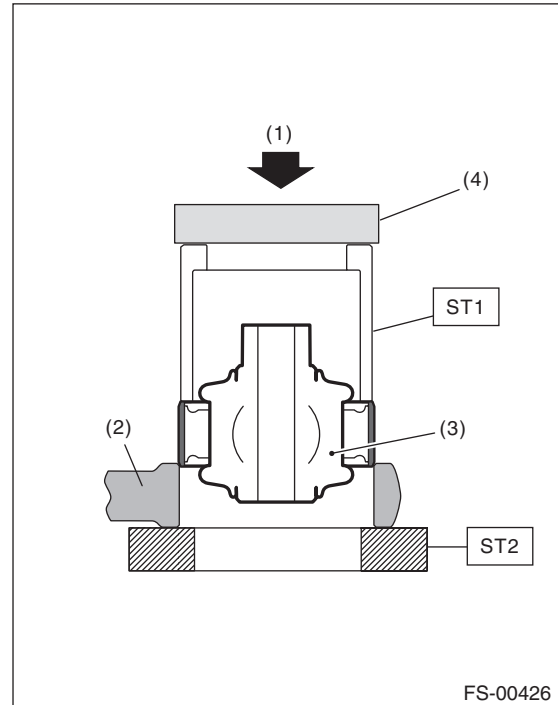
2) Align the center of rear bushing recess portion with the aligning mark on the front arm.



- (1) Alignment mark
- (2) Recess section

3) Using the ST and a press, install the rear bushing.

ST1 20299AE020 INSTALLER & REMOVER  
ST2 18723AA000 REMOVER ASSY (GEAR DRIVEN)



- (1) Press
- (2) Front arm
- (3) Rear bushing
- (4) Plate

### NOTE:

Place the plate on the ST1 to use the press.

### E: INSPECTION

- 1) Check the front arm for damage or cracks, and correct or replace if defective.
- 2) Check the bushing for abnormal fatigue or damage.
- 3) Check the pillow ball bushing for damage or cracks, and replace if defective.
- 4) Try to wobble the pillow ball bushing. Replace the pillow ball bushing if backlash or resistance are found.