

16.Hill Start Assist

A: NOTE

For procedure and diagnosis procedure of each component in the hill start assist, refer to the respective section.

- VEHICLE DYNAMICS CONTROL (VDC): <Ref. to VDC-2, General Description.>
- VEHICLE DYNAMICS CONTROL (VDC) (DIAGNOSTICS): <Ref. to VDC(diag)-2, Basic Diagnostic Procedure.>

B: OPERATION

1. HILL START ASSIST OFF MODE (6 MT MODEL)

CAUTION:

- Hill start auxiliary function by brake force does not operate when turning the hill start assist function to OFF. Be sure to perform the hill start operation with parking brake.
- Hill start assist warning light always illuminates to inform that the hill start assist does not operate during hill start assist OFF mode.

- 1) Park the vehicle on a level surface, and apply the parking brake.
- 2) Stop the engine.
- 3) Restart the engine.
- 4) After restarting the engine, check that the ABS and VDC warning light go off and brake warning light illuminates.
- 5) Continue to push the VDC mode change switch with the engine starting condition.
- 6) VDC warning light & VDC multi mode indicator light illuminate to yellow from green, and after 8 seconds, VDC warning light & VDC multi mode indicator light go off.
- 7) Within 5 seconds after going off the VDC warning light & VDC multi mode indicator light, release the VDC mode change switch and push the VDC mode change switch once again within 2 seconds.
- 8) Hill start assist warning light illuminates.
- 9) Stop the engine.

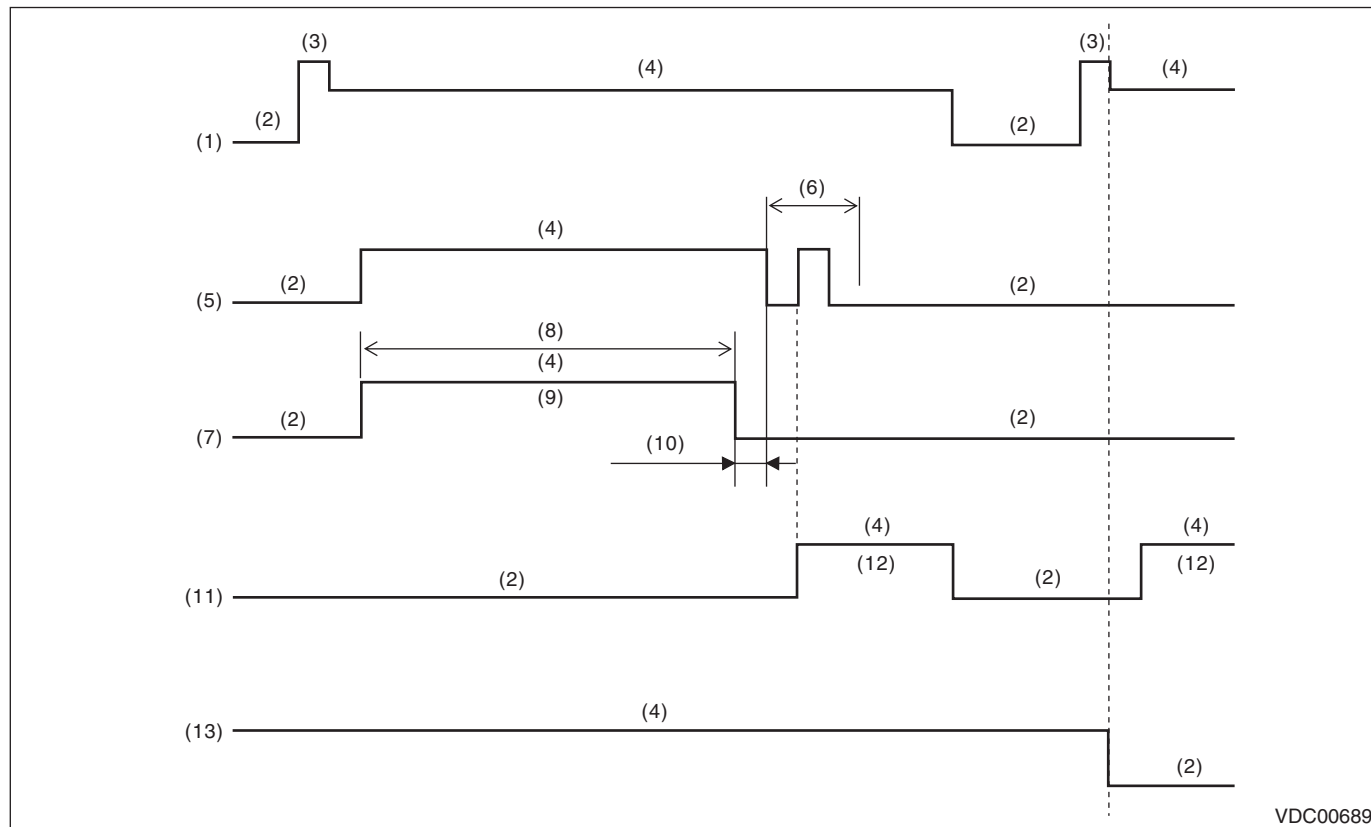
Hill Start Assist

BRAKE

10) Restart the engine.

NOTE:

- Hill start assist function can not be turned to OFF until restarting the engine.
- In case of wrong operation procedure, stop the engine and start from the step (1) again.



VDC00689

- | | | |
|----------------------------|------------------------------------------------------------|--------------------------------------|
| (1) Ignition key | (6) 2 seconds or less | (11) Hill start assist warning light |
| (2) OFF | (7) VDC warning light & VDC multi mode indicator light | (12) Yellow illumination |
| (3) Start | (8) Approx. 8 seconds (until the (7) stops appearing) | (13) Hill start assist function |
| (4) ON | (9) Change to yellow illumination from green illumination. | |
| (5) VDC mode change switch | (10) 5 seconds or less | |

2. RETURNING OF HILL START ASSIST OFF MODE (6 MT MODEL)

NOTE:

Operation procedure for returning from the hill start assist OFF mode.

- 1) Park the vehicle on a level surface, and apply the parking brake.
- 2) Stop the engine.
- 3) Restart the engine.
- 4) After restarting the engine, check that the ABS and VDC warning light go off and brake warning light illuminates.
- 5) Continue to push the VDC mode change switch with the engine starting condition.
- 6) VDC warning light & VDC multi mode indicator light illuminate to yellow from green, and after 8 seconds, VDC warning light & VDC multi mode indicator light go off.
- 7) Within 5 seconds after going off the VDC warning light & VDC multi mode indicator light, release the VDC mode change switch and push the VDC mode change switch once again within 2 seconds.
- 8) Hill start assist warning light goes off.
- 9) Stop the engine.
- 10) Restart the engine.

NOTE:

- Hill start assist function does not return until restarting the engine.
- In case of wrong operation procedure, stop the engine and start from the step (1) again.