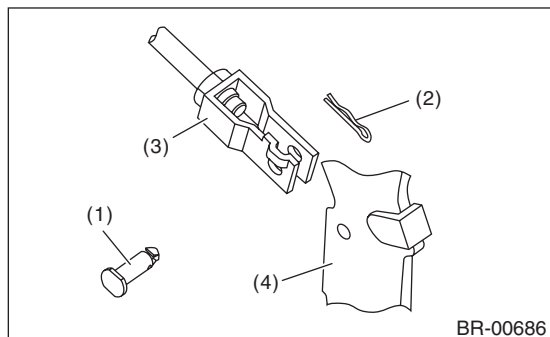


14.Brake Pedal

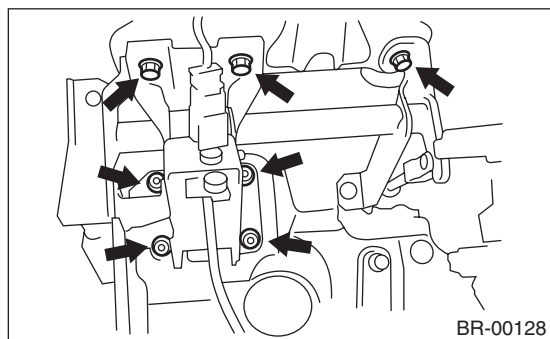
A: REMOVAL

- 1) Remove the steering column. <Ref. to PS-16, REMOVAL, Steering Column.>
- 2) Disconnect the connector from the clutch switch.
- 3) Disconnect the connector from stop light switch.
- 4) Remove the stop light switch. <Ref. to BR-49, REMOVAL, Stop Light Switch.>
- 5) Remove the clevis pin which secures the pedal and operating rod.



- (1) Clevis pin
- (2) Snap pin
- (3) Operating rod
- (4) Brake pedal

- 6) Remove the nut which secures the clutch master cylinder.
- 7) Remove the bolt and nut which secure the brake pedal bracket.



B: INSTALLATION

- 1) Install the bolt and nut which secure the brake pedal bracket.

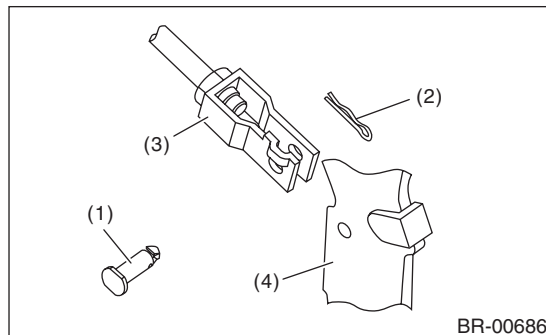
Tightening torque:

18 N·m (1.84 kgf-m, 13.3 ft-lb)

- 2) Install clevis pin and snap pin which secure the operating rod to the brake pedal.

NOTE:

- Replace with a new clevis pin.
- Apply NIGTIGHT LYW No. 2 grease to the clevis pin.



- (1) Clevis pin
- (2) Snap pin
- (3) Operating rod
- (4) Brake pedal

- 3) Install the stop light switch. <Ref. to BR-49, INSTALLATION, Stop Light Switch.>
- 4) Check the brake pedal after installation. <Ref. to BR-48, INSPECTION, Brake Pedal.>

C: INSPECTION

1) Move the brake pedal pads in a horizontal direction with a force of approx. 10 N (1 kgf, 2 lbf), and check that the pedal deflection is in the range of specifications.

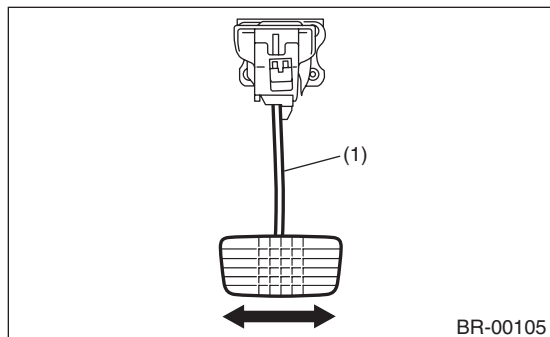
CAUTION:

If excessive deflection is noted, replace with a new bushing.

Deflection of brake pedal:

Limit

5.0 mm (0.197 in) or less



(1) Brake pedal

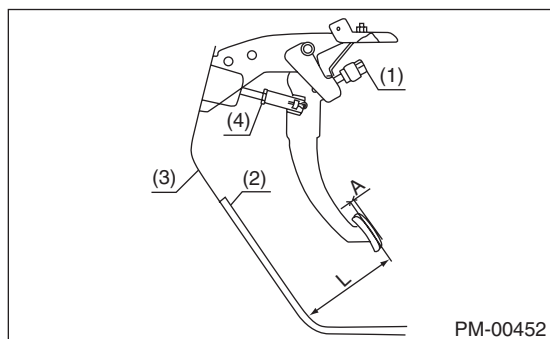
2) Check the position of the pedal pad.

Pedal height L:

150 — 160 mm (5.91 — 6.29 in)

Brake pedal free play A:

0.5 — 2 mm (0.020 — 0.079 in) [When pulling the brake pedal upward with a force of less than 10 N (1 kgf, 2 lbf).]



- (1) Stop light switch
- (2) Mat
- (3) Toe board
- (4) Brake booster operating rod

3) Adjust as follows, if the inspection result is not within the standard value.

(1) Remove the stop light switch. <Ref. to BR-49, REMOVAL, Stop Light Switch.>

(2) Loosen the lock nut of the brake booster operating rod, and rotate the rod to adjust the pedal height L to be within the standard value.

(3) Tighten the lock nut.

Tightening torque:

22 N·m (2.24 kgf-m, 16.2 ft-lb)

(4) Install the stop light switch. <Ref. to BR-49, INSTALLATION, Stop Light Switch.>