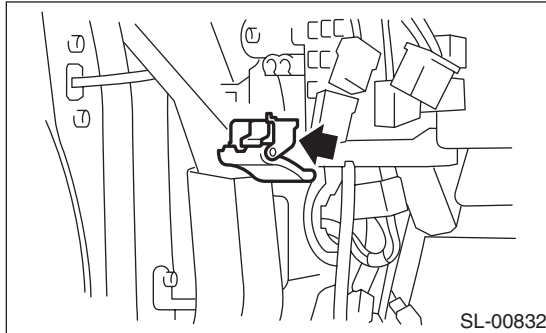


15.Remote Openers

A: REMOVAL

1. FRONT HOOD OPENER

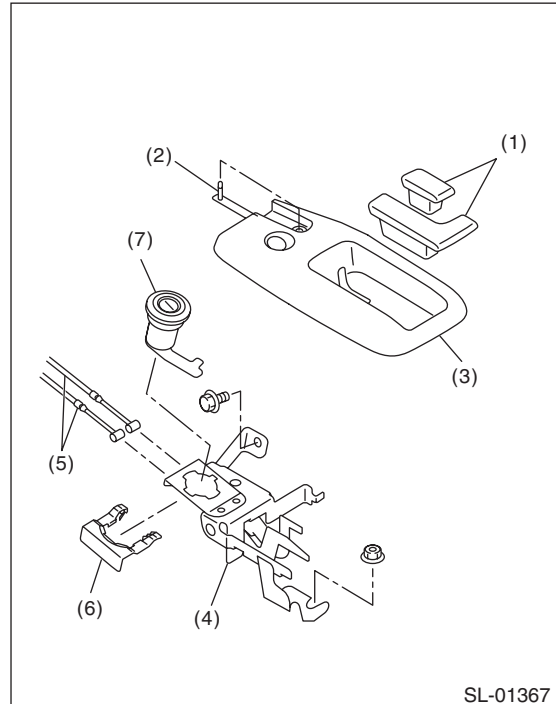
- 1) Remove the cable from the front hood lock.
- 2) Remove the bolt, and then detach the opener lever.



2. TRUNK LID OPENER

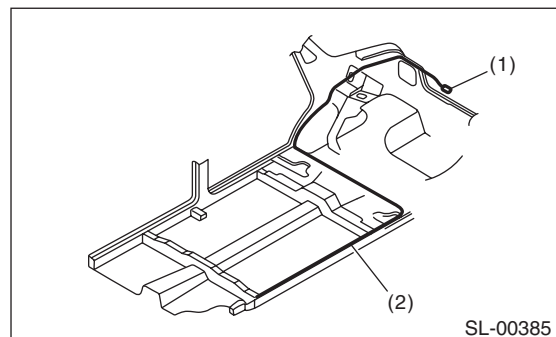
- 1) Remove the rear seat. <Ref. to SE-13, REMOVAL, Rear Seat.>
- 2) Remove the lower inner trim, rear quarter trim and floor mat on the driver's side. Remove the clip holding the cable.
- 3) Remove the opener lever and detach the cover.
- 4) Remove the bolt and nut, and then detach the pull handle assembly.

- 5) Remove the cable from pull handle assembly.



- (1) Opener lever
- (2) Pin
- (3) Front cover
- (4) Pull handle ASSY
- (5) Cable
- (6) Clamp
- (7) Key cylinder

- 6) Remove the trunk lid latch & actuator assembly from the trunk lid. <Ref. to SL-38, REMOVAL, Trunk Lid Latch and Actuator Assembly.>
- 7) Remove the cable from the trunk lid latch & actuator assembly.

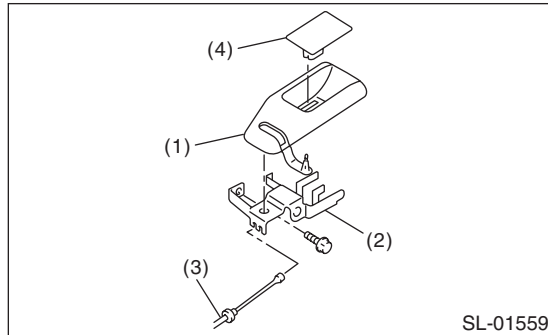


- (1) Trunk lid latch and actuator ASSY
- (2) Cable

3. FUEL FILLER LID OPENER

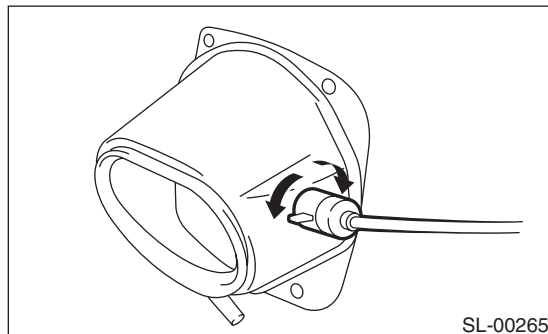
5 door model

- 1) Remove the rear seat. <Ref. to SE-13, REMOVAL, Rear Seat.>
- 2) Remove the lower inner trim, rear quarter trim and floor mat on the driver's side. Remove the clip holding the cable.
- 3) Remove the opener lever and detach the cover.
- 4) Remove the bolts, then remove the pull handle assembly.
- 5) Remove the cable from pull handle assembly.



- (1) Cover
- (2) Pull handle ASSY
- (3) Cable
- (4) Opener lever

- 6) Rotate the fuel lock inside the quarter panel to 90° and remove. (Either right or left turn)



4 door model

Refer to the trunk lid opener. <Ref. to SL-40, TRUNK LID OPENER, REMOVAL, Remote Openers.>

B: INSTALLATION

Install each part in the reverse order of removal.

C: INSPECTION

Check if the front hood, trunk lid and fuel flap operate normally.