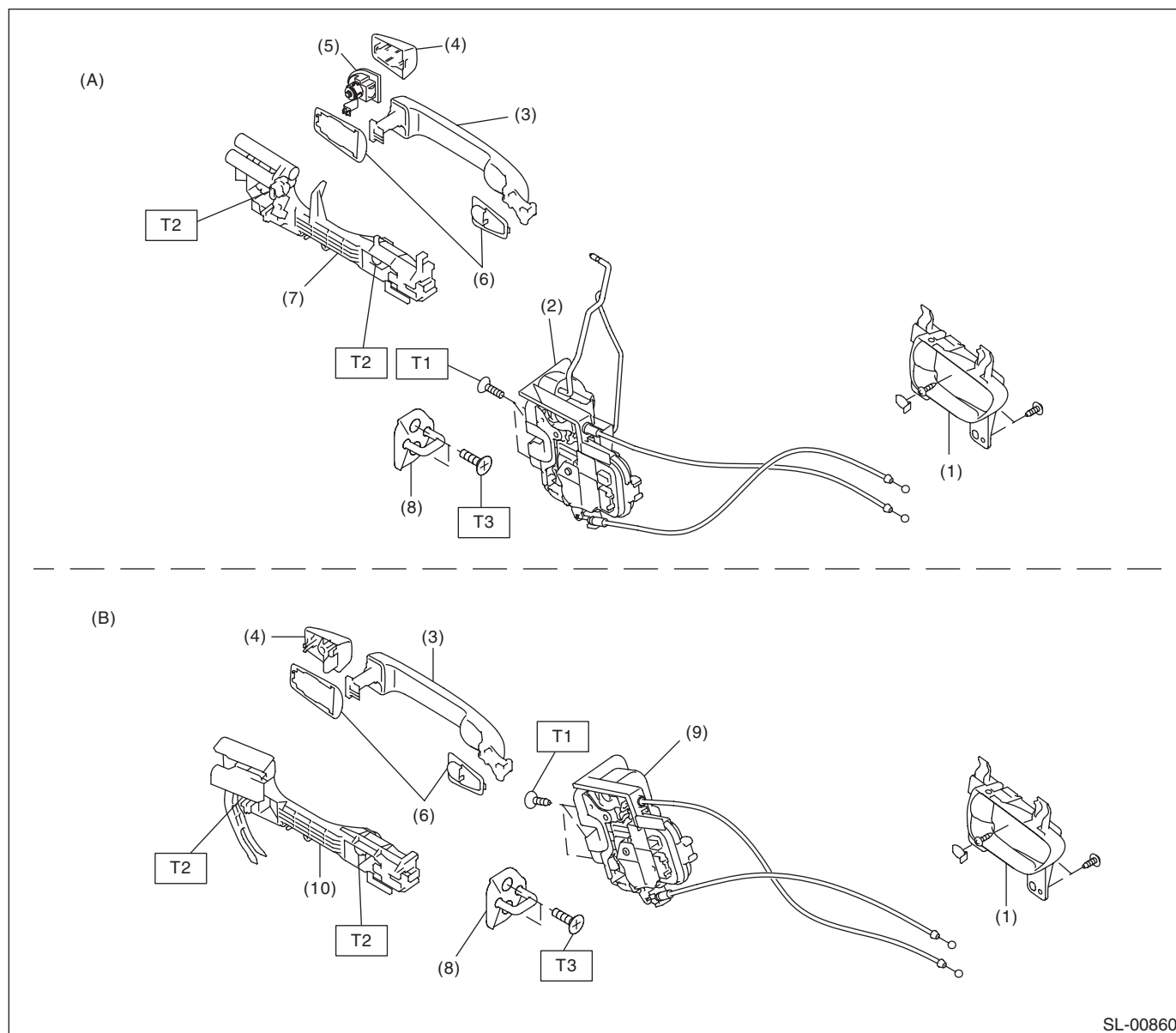


1. General Description

A: COMPONENT

1. DOOR LOCK ASSEMBLY



SL-00860

(A) Front

(B) Rear

- | | |
|--|---|
| (1) Inner remote ASSY | (6) Door outer handle spacer |
| (2) Front door latch and door lock actuator ASSY | (7) Front door outer handle frame ASSY |
| (3) Door outer handle | (8) Striker |
| (4) Door outer handle cover | (9) Rear door latch and door lock actuator ASSY |
| (5) Key cylinder (driver's side only) | (10) Rear door outer handle frame ASSY |

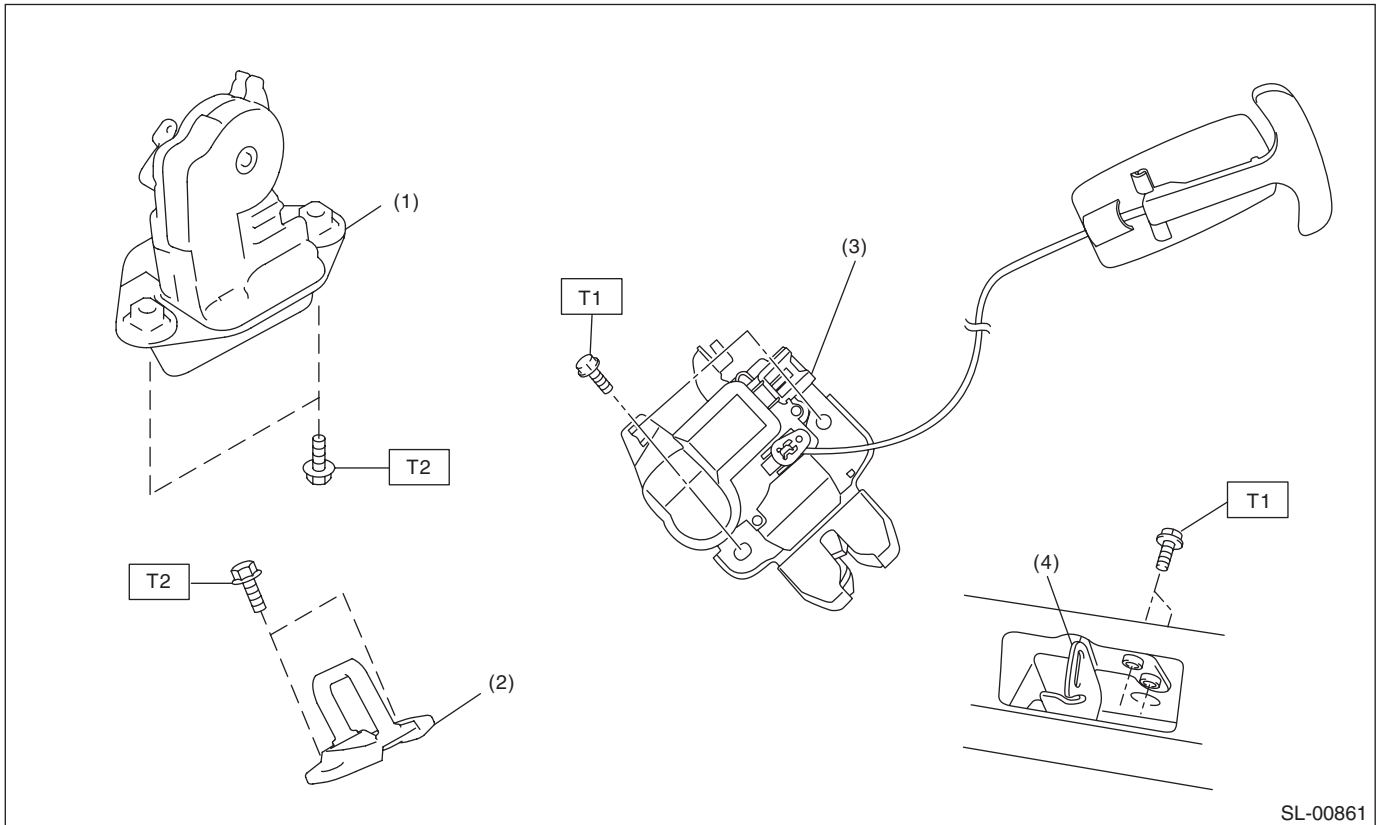
Tightening torque: N·m (kgf-m, ft-lb)

T1: 6.5 (0.66, 4.8)

T2: 7.5 (0.76, 5.5)

T3: 18 (1.84, 13.3)

2. REAR GATE LOCK AND TRUNK LID



(1) Rear gate latch and actuator ASSY

(2) Rear gate striker

(3) Trunk lid latch and actuator ASSY

(4) Trunk lid striker

Tightening torque: N·m (kgf-m, ft-lb)

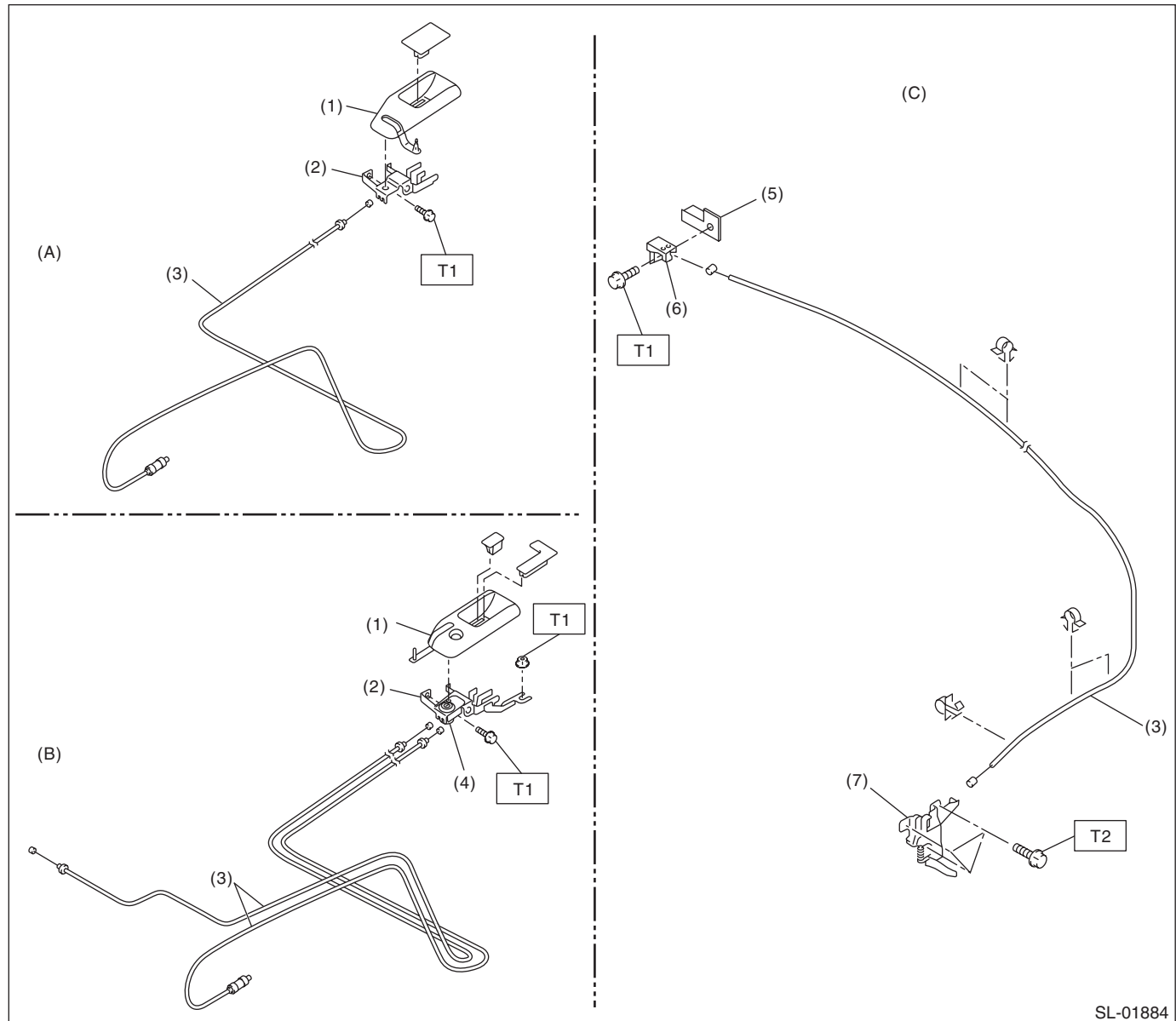
T1: 7.5 (0.76, 5.5)

T2: 25 (2.55, 18.4)

General Description

SECURITY AND LOCKS

3. FRONT HOOD LOCK AND REMOTE OPENERS



SL-01884

(A) Fuel lock release

(B) Fuel and trunk lock release

(C) Hood lock release

- (1) Cover
- (2) Pull handle ASSY
- (3) Cable
- (4) Key cylinder

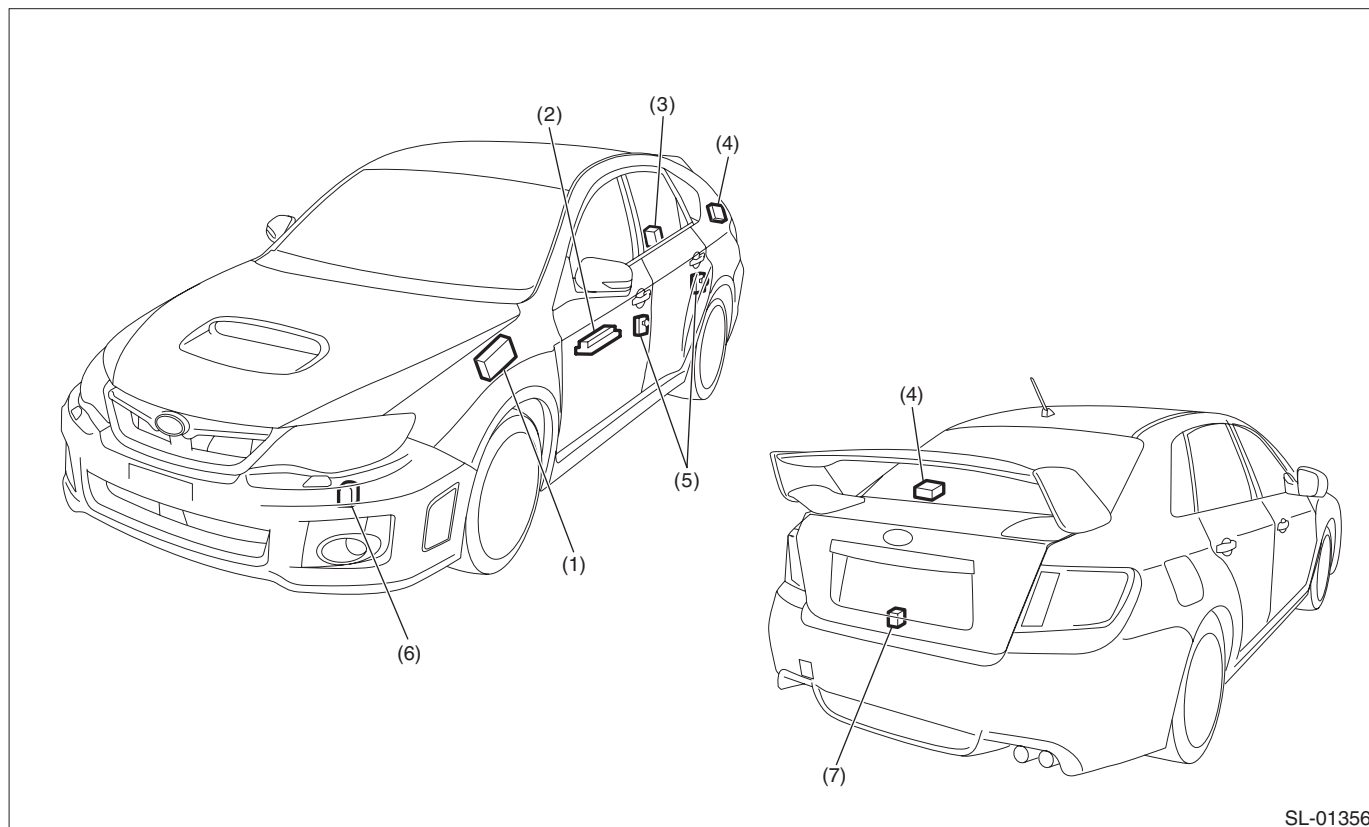
- (5) Lever ASSY bracket
- (6) Lever ASSY
- (7) Front hood lock ASSY

Tightening torque: N·m (kgf-m, ft-lb)

T1: 7.5 (0.76, 5.5)

T2: 33 (3.36, 24.2)

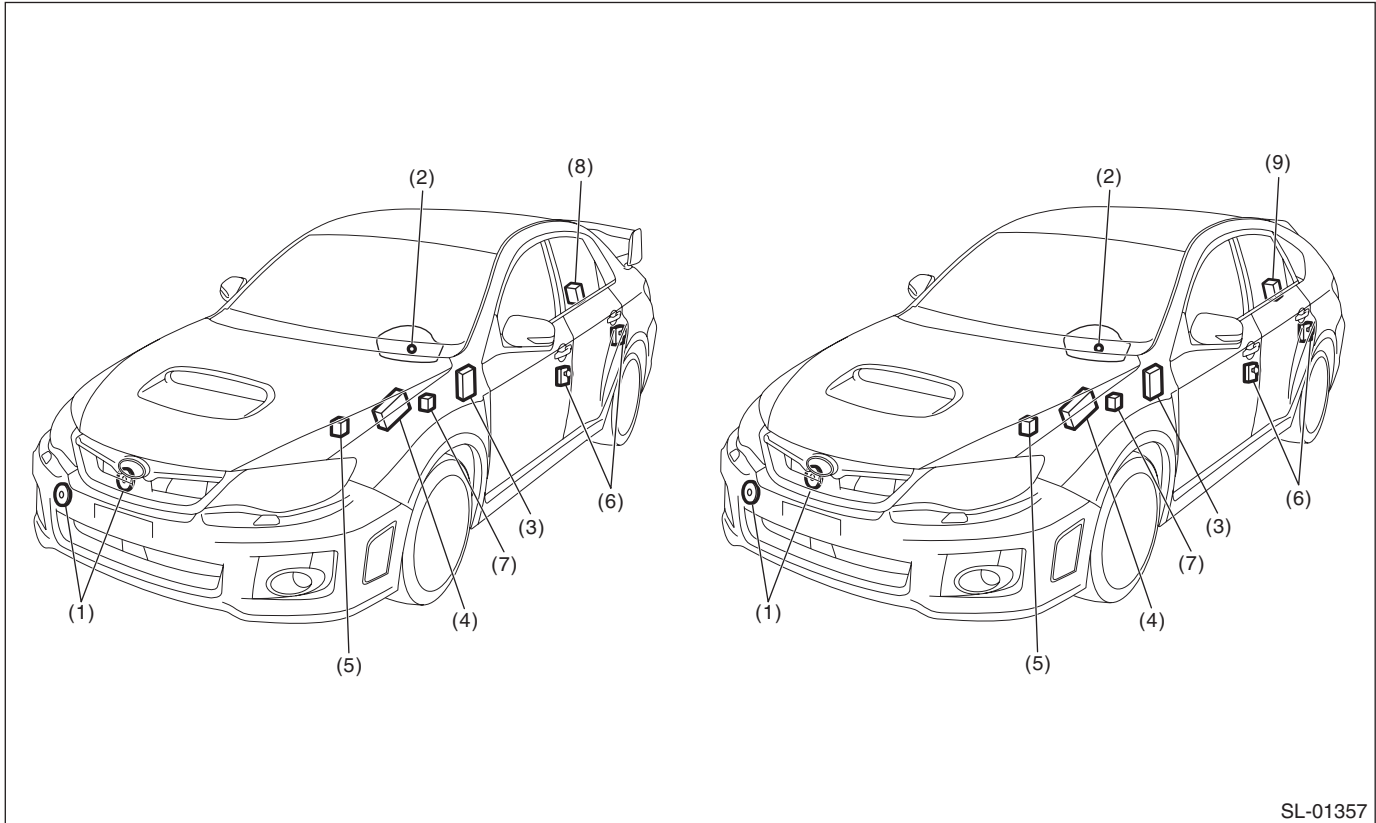
4. KEYLESS ENTRY SYSTEM



SL-01356

- | | | |
|---|----------------------------------|---|
| (1) Body integrated unit | (4) Keyless entry control module | (7) Trunk lid latch switch (4 door model) |
| (2) Power window main switch | (5) Door switch | |
| (3) Rear gate latch switch (5 door model) | (6) Keyless buzzer | |

5. SECURITY SYSTEM



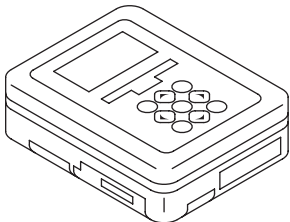
SL-01357

- | | | |
|---|-----------------------------------|---|
| (1) Horn | (4) Body integrated unit | (7) Turn signal and hazard module |
| (2) Security indicator light (in combination meter) | (5) Horn relay (in main fuse box) | (8) Trunk lid latch switch (4 door model) |
| (3) Impact sensor (driver's seat instrument panel side) (dealer option) | (6) Door switch | (9) Rear gate latch switch (5 door model) |

B: CAUTION

- Before disassembling or reassembling parts, always disconnect the battery ground cable from battery. When replacing the audio, control module and other parts provided with memory functions, record the memory contents before disconnecting the battery ground cable. Otherwise, the memory is cleared.
- When performing a check after disconnecting the battery or restoring from a dead battery condition, perform the check after turning the ignition to ON and OFF, then opening and closing the driver's side door a few times.
- Reassemble the parts in the reverse order of disassembly procedure unless otherwise indicated.
- Connect the connectors securely during reassembly.
- After reassembly, make sure that the functional parts operate normally.
- If any immobilizer related part has been replaced, make sure to register the immobilizer.
- Do not use any electrical test equipment on the airbag system wiring harnesses and connector circuits.
- Be careful not to damage the airbag system wiring harness when servicing the ignition key cylinder.

C: PREPARATION TOOL**1. SPECIAL TOOL**

ILLUSTRATION	TOOL NUMBER	DESCRIPTION	REMARKS
 <p>ST1B022XU0</p>	1B022XU0	SUBARU SELECT MONITOR III KIT	Used for troubleshooting the electrical system.

2. GENERAL TOOL

TOOL NAME	REMARKS
Circuit tester	Used for measuring resistance and voltage.
Drill	Used for replacing ignition key lock.
TORX® T30	Used for removing and installing the door outer handle.
Clip remover	Used for removing trim clip