

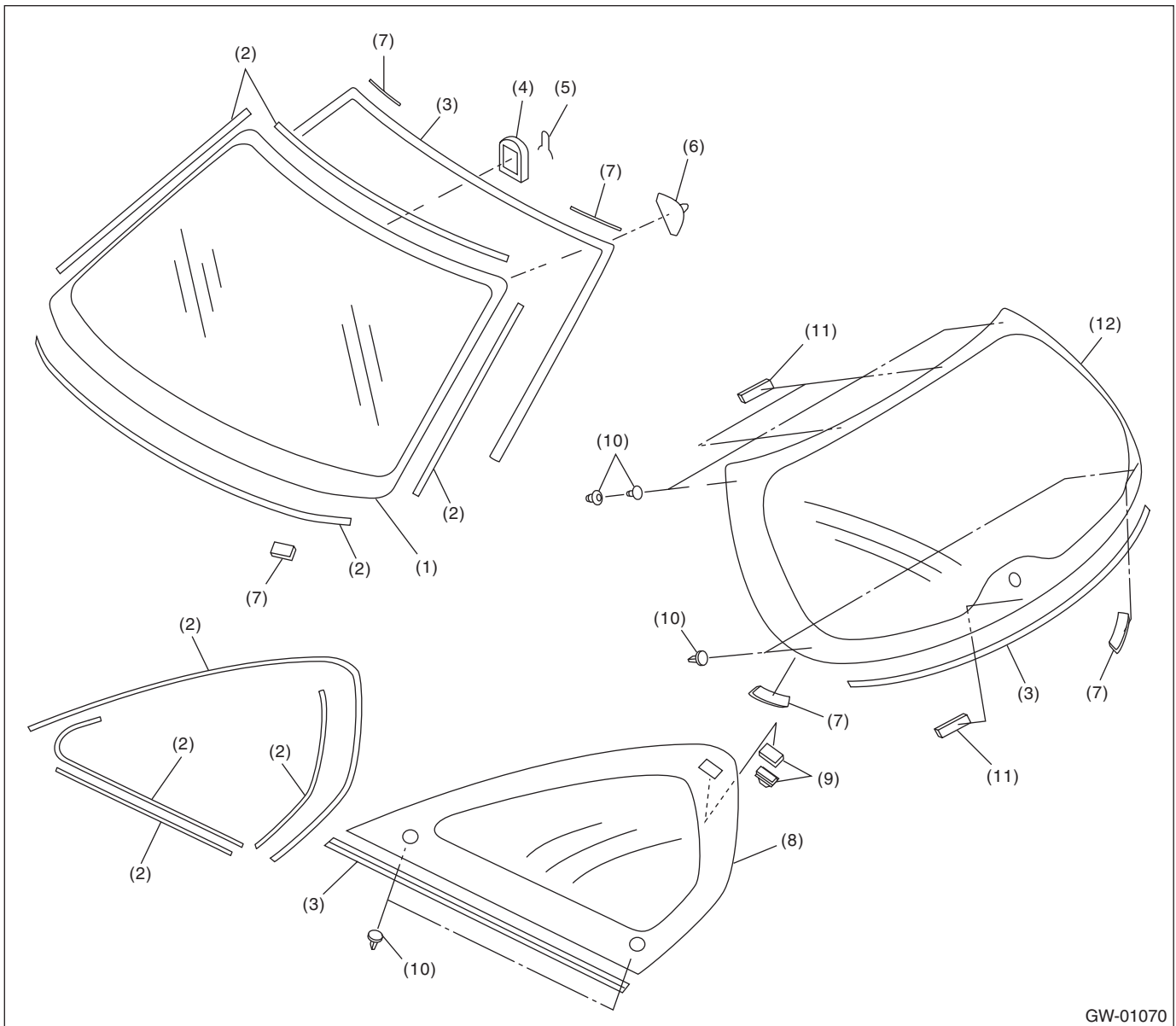
General Description

GLASS/WINDOWS/MIRRORS

1. General Description

A: COMPONENT

1. FIXED GLASS (5 DOOR MODEL)



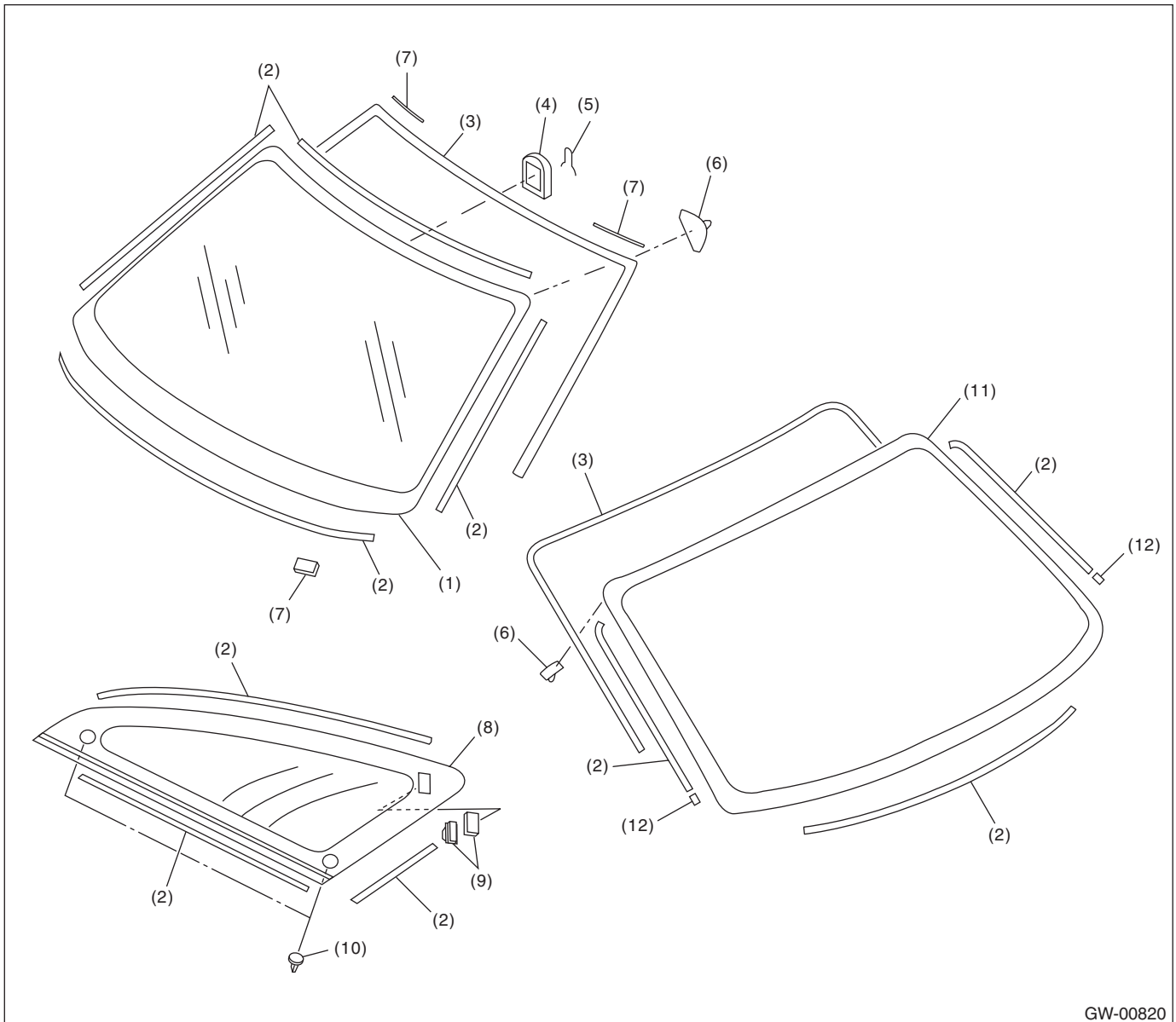
GW-01070

- (1) Windshield glass
- (2) Dam rubber
- (3) Molding
- (4) Rearview mirror mount

- (5) Spring
- (6) Locating pin
- (7) Seal
- (8) Rear quarter glass

- (9) Fastener
- (10) Locating pin
- (11) Spacer
- (12) Rear gate glass

2. FIXED GLASS (4 DOOR MODEL)

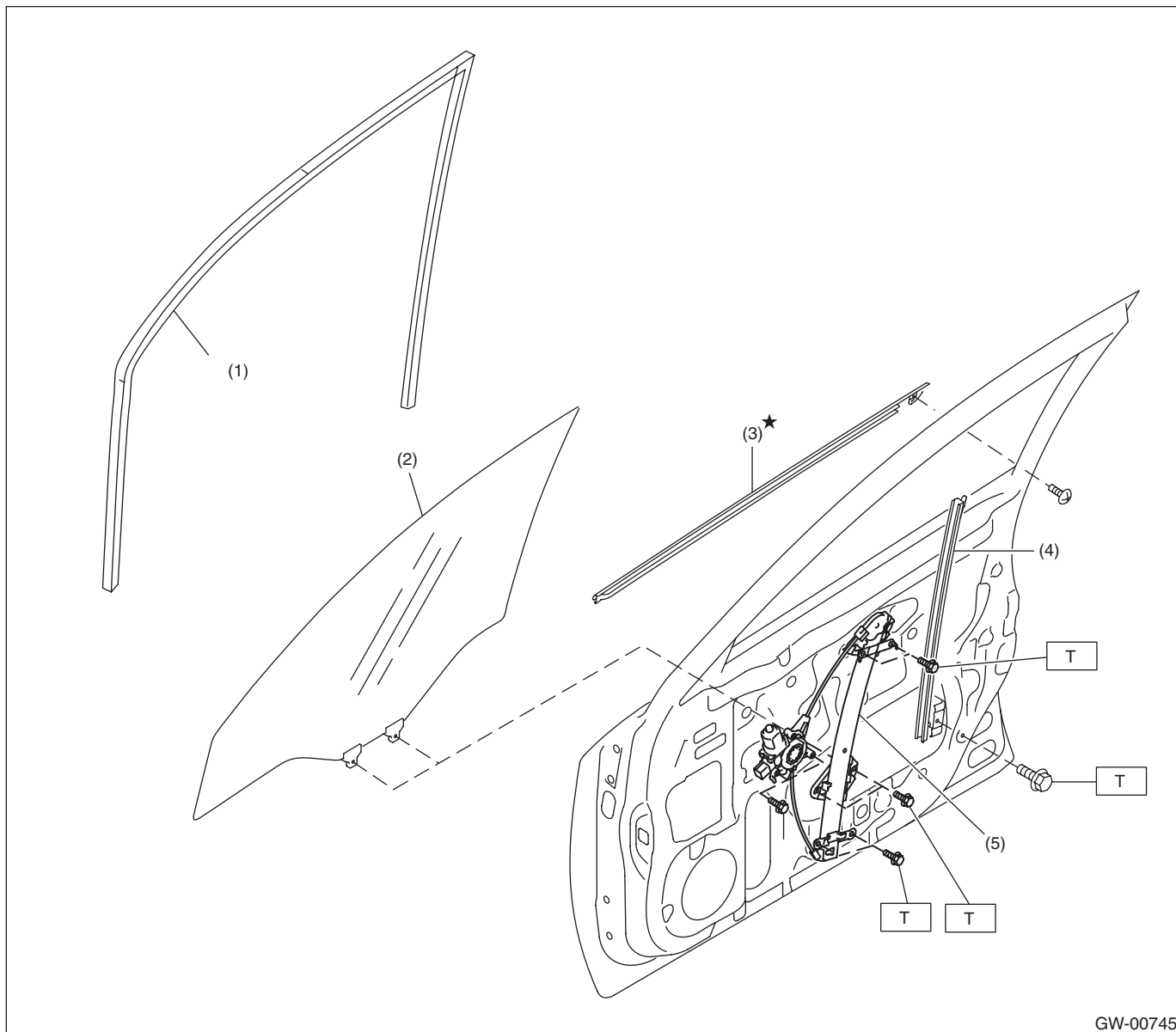


- | | | |
|---------------------------|------------------------|------------------------|
| (1) Windshield glass | (5) Spring | (9) Fastener |
| (2) Dam rubber | (6) Locating pin | (10) Locating pin |
| (3) Molding | (7) Seal | (11) Rear window glass |
| (4) Rearview mirror mount | (8) Rear quarter glass | (12) Spacer |

General Description

GLASS/WINDOWS/MIRRORS

3. FRONT DOOR GLASS



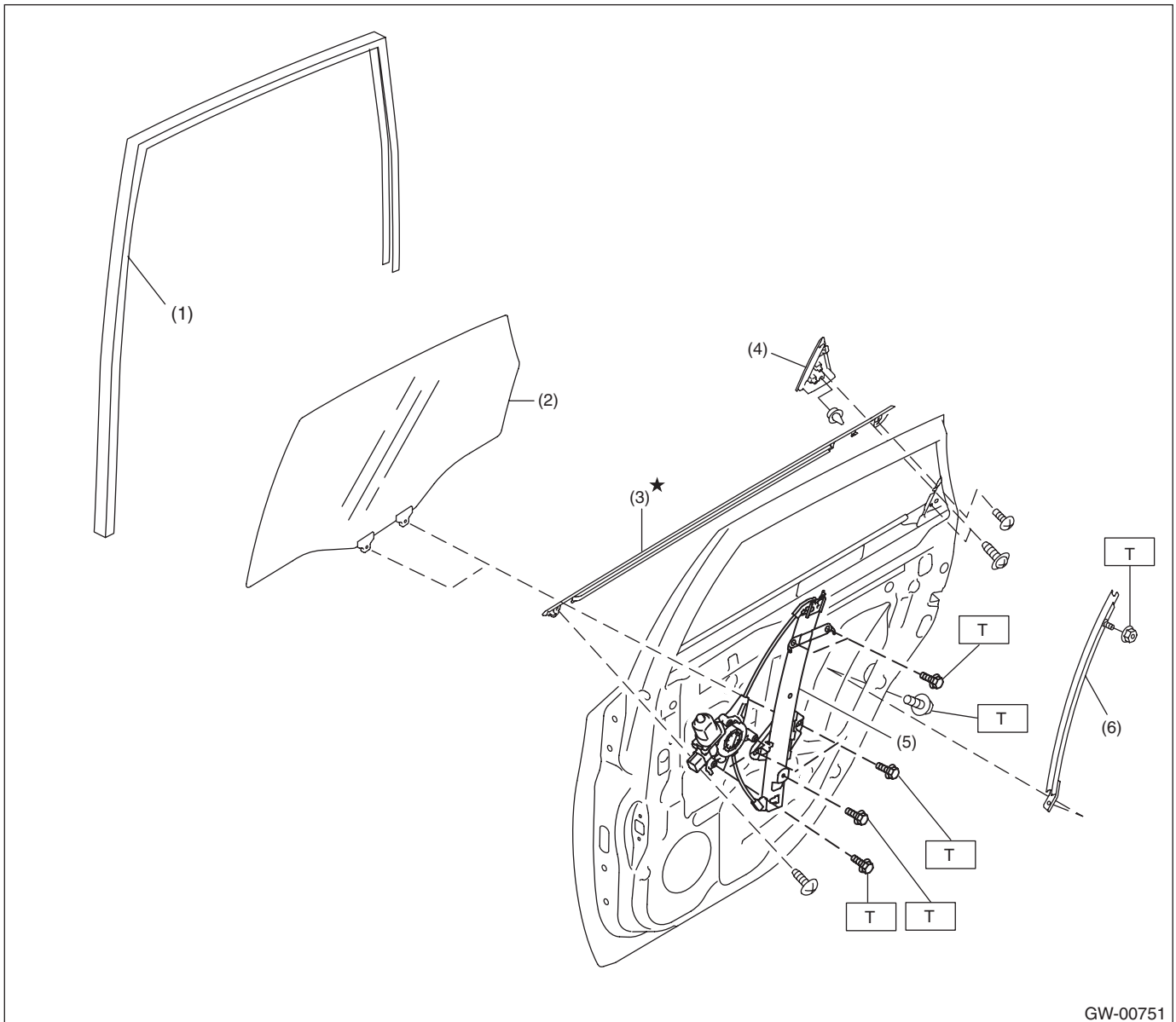
- (1) Glass run rubber
- (2) Glass
- (3) Weather strip outer

- (4) Door sash
- (5) Regulator & motor ASSY

Tightening torque: N·m (kgf-m, ft-lb)

T: 7.5 (0.76, 5.5)

4. REAR DOOR GLASS



GW-00751

- | | |
|-------------------------|-----------------------------|
| (1) Glass run rubber | (4) Rear outer gusset cover |
| (2) Glass | (5) Regulator & motor ASSY |
| (3) Weather strip outer | (6) Door sash |

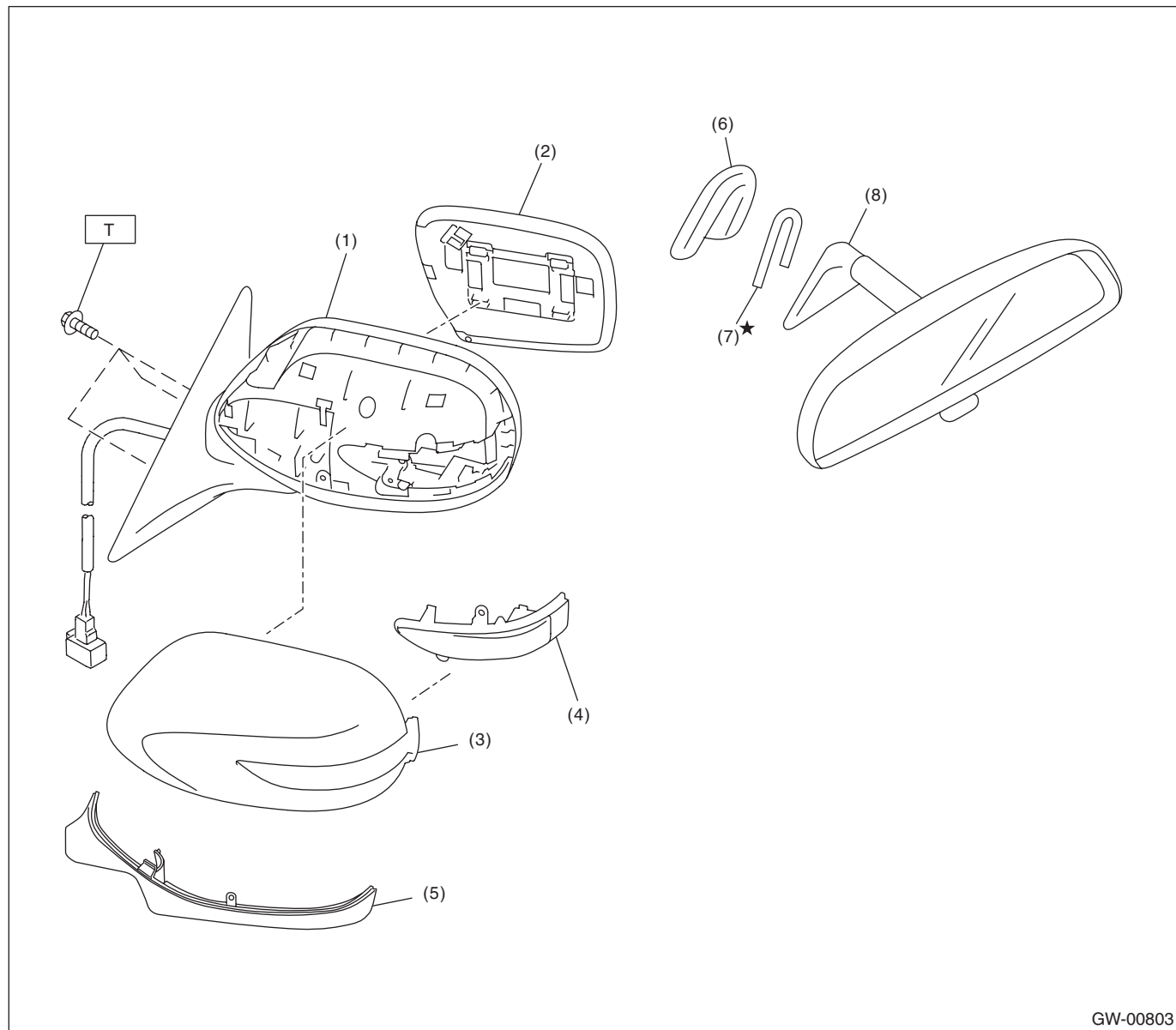
Tightening torque: N·m (kgf-m, ft-lb)

T: 7.5 (0.76, 5.5)

General Description

GLASS/WINDOWS/MIRRORS

5. MIRROR



GW-00803

- | | |
|---------------------------------|------------------------------|
| (1) Outer mirror case ASSY | (5) Outer mirror lower cover |
| (2) Mirror | (6) Mount |
| (3) Scalp cap | (7) Spring |
| (4) Side turn signal light ASSY | (8) Rearview mirror ASSY |

Tightening torque: N·m (kgf-m, ft-lb)

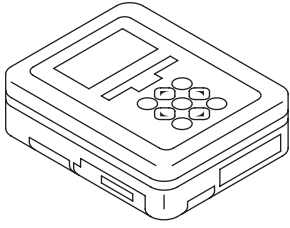
T: 4.5 (0.46, 3.3)

B: CAUTION

- Before disassembling or reassembling parts, always disconnect the battery ground cable from battery. When replacing the audio, control module and other parts provided with memory functions, record the memory contents before disconnecting the battery ground cable. Otherwise, the memory is cleared.
- Avoid impact and damage to the glass.
- Reassemble the parts in the reverse order of disassembly procedure unless otherwise indicated.
- Connect the connectors securely during reassembly.
- After reassembly, make sure that the functional parts operate normally.

C: PREPARATION TOOL

1. SPECIAL TOOL

ILLUSTRATION	TOOL NUMBER	DESCRIPTION	REMARKS
 <p>ST1B022XU0</p>	1B022XU0	SUBARU SELECT MONITOR III KIT	Used for setting of each function and trouble-shooting for electrical system.

2. GENERAL TOOL

TOOL NAME	REMARKS
Circuit tester	Used for measuring resistance and voltage.
Piano wire	Used for removing the window glass.
Cutter knife	Used for removing the window glass.
Windshield glass knife	Used for removing the window glass.