

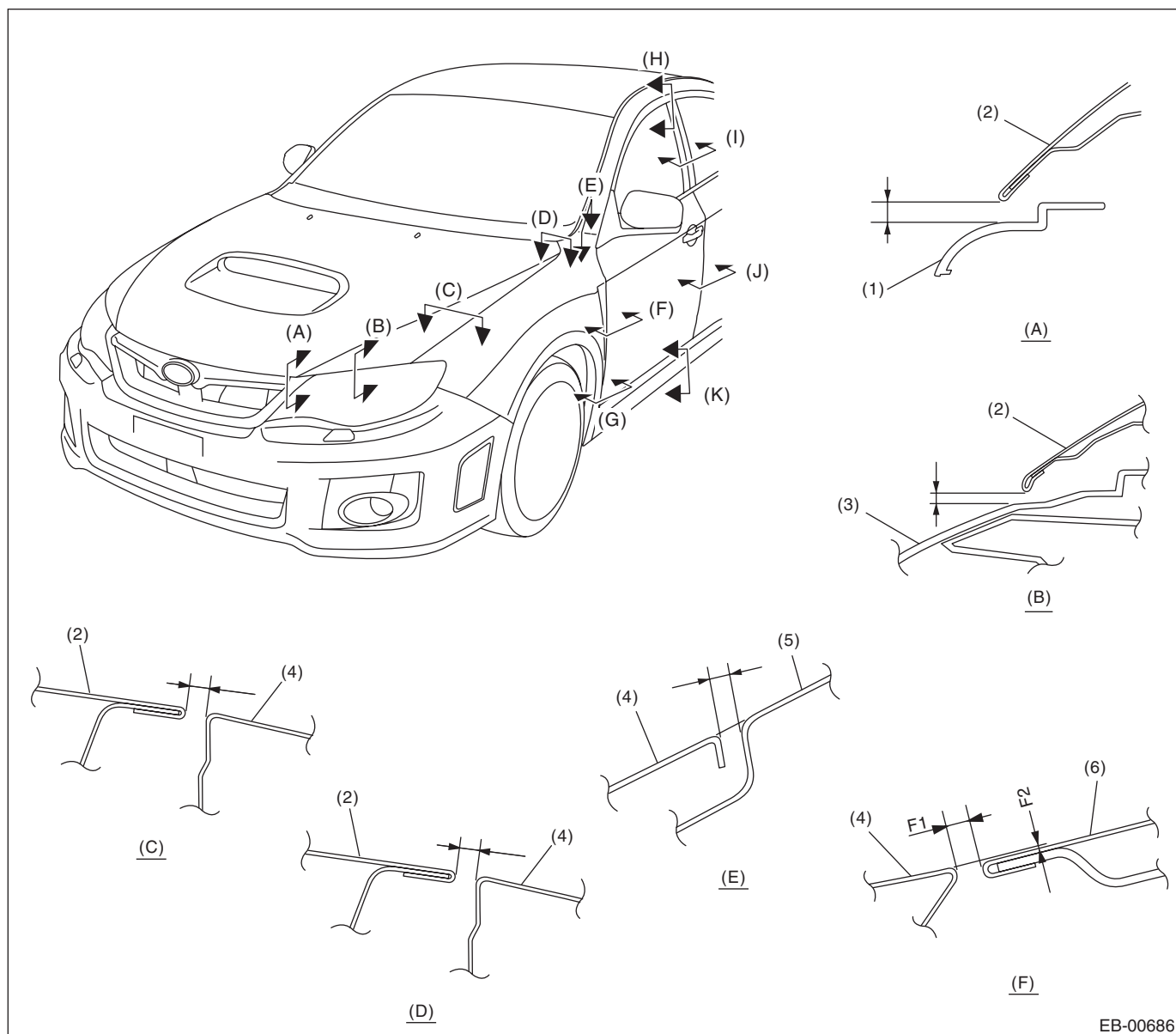
General Description

EXTERIOR BODY PANELS

1. General Description

A: SPECIFICATION

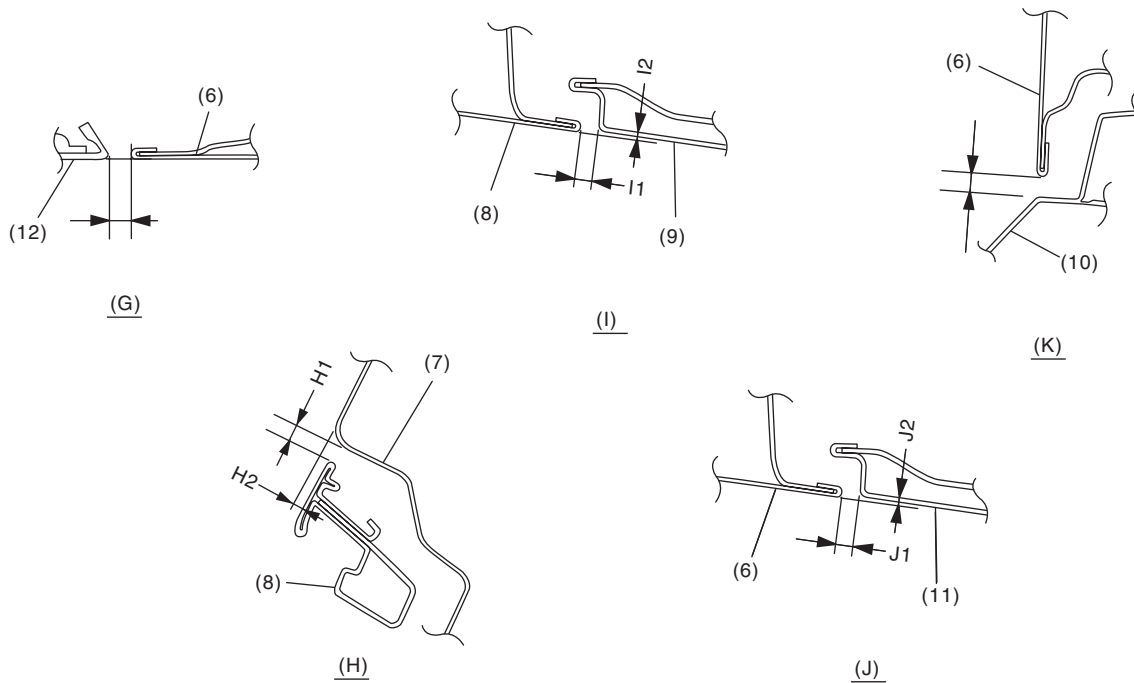
1. FRONT



EB-00686

General Description

EXTERIOR BODY PANELS



EB-00509

- | | | |
|------------------------|------------------------|------------------------|
| (1) Front grille | (5) Front pillar panel | (9) Rear door sash |
| (2) Front hood panel | (6) Front door panel | (10) Side sill spoiler |
| (3) Headlight | (7) Roof panel | (11) Rear door panel |
| (4) Front fender panel | (8) Front door sash | (12) Fender garnish |

Section	Part	Standard
(A)	Front hood panel to Front grille	6.0±1.0 mm (0.24±0.04 in)
(B)	Front hood panel to Headlight	6.0±1.0 mm (0.24±0.04 in)
(C)	Front hood panel to Front fender panel	3.5±1.0 mm (0.14±0.04 in)
(D)	Front hood panel to Front fender panel (rear end only)	4.8+0.7, -1.0 mm (0.19+0.03, -0.04 in)
(E)	Front fender panel to Front pillar panel	3.0±1.0 mm (0.12±0.04 in)
(F)	Front fender panel to Front door panel	F1: 4.0±1.0 mm (0.16±0.04 in) F2: 0+1.0, -0.5 mm (0+0.04, -0.02 in) (Make sure that the fender panel is slightly outside of the door panel)
(G)	Fender garnish to Front door panel	4.3±1.0 mm (0.17±0.04 in)
(H)	Roof panel to Front door sash	H1: 5.0±1.0 mm (0.20±0.04 in) H2: 3.8±1.0 mm (0.15±0.04 in)
(I)	Front door sash to Rear door sash	I1: 5.5±1.0 mm (0.22±0.04 in) I2: 0+1.0, -0.5 mm (0+0.04, -0.02 in) (Make sure that the front door side is slightly outside of the rear door side)
(J)	Front door panel to Rear door panel	J1: 4.5±1.0 mm (0.18±0.04 in) J2: 0+1.0, -0.5 mm (0+0.04, -0.02 in) (Make sure that the front door side is slightly outside of the rear door side)
(K)	Front door panel to Side sill spoiler	6.0±1.0 mm (0.24±0.04 in)

NOTE:

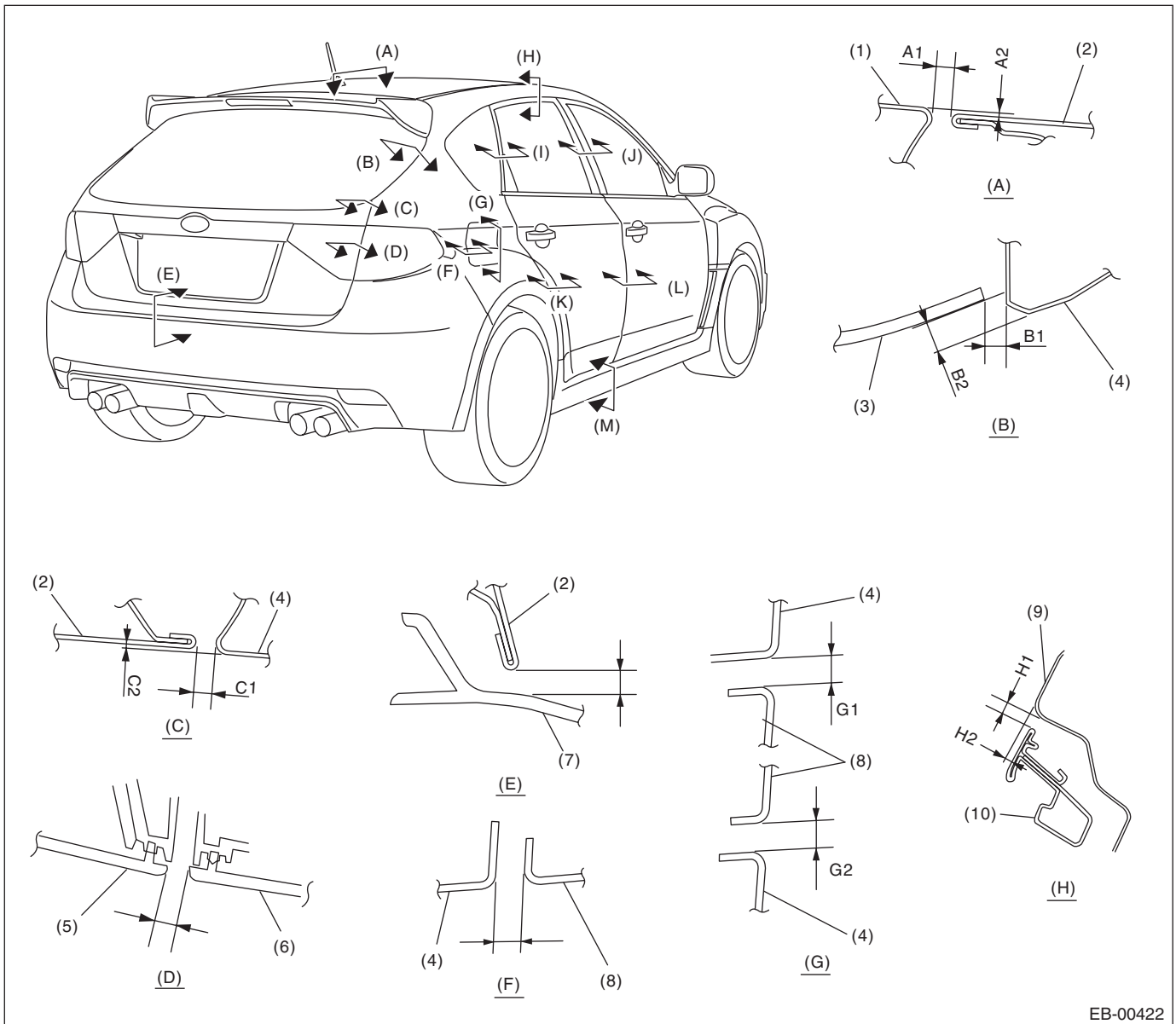
For surface level gap between sunroof glass lid and roof panel, refer to "SUNROOF" section. <Ref. to SR-5, ADJUSTMENT, Glass Lid.>

General Description

EXTERIOR BODY PANELS

2. REAR

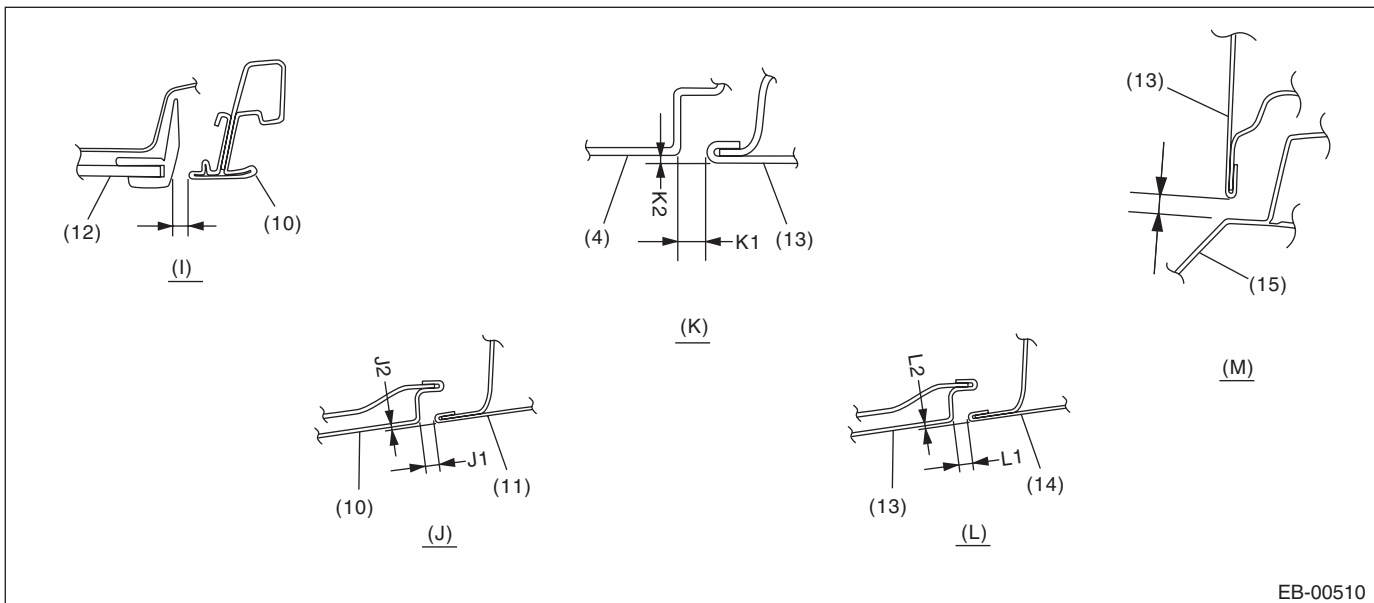
5 DOOR MODEL



EB-00422

General Description

EXTERIOR BODY PANELS



EB-00510

- | | | |
|-------------------------|----------------------------|-------------------------|
| (1) Roof panel | (6) Rear combination light | (11) Front door sash |
| (2) Rear gate panel | (7) Rear bumper | (12) Rear quarter glass |
| (3) Rear gate glass | (8) Fuel filler lid | (13) Rear door panel |
| (4) Rear quarter panel | (9) Roof panel | (14) Front door panel |
| (5) Rear finisher light | (10) Rear door sash | (15) Side sill spoiler |

Section	Part	Standard value
(A)	Roof panel to Rear gate panel	A1: 6.0+1.0–0.5 mm (0.24+0.04–0.02 in) A2: 1.0±1.0 mm (0.04±0.04 in)
(B)	Rear gate glass to Rear quarter panel	B1: 5.0±1.5 mm (0.20±0.06 in) B2: 6.7±1.5 mm (0.26±0.06 in)
(C)	Rear gate panel to Rear quarter panel	C1: 4.6±1.0 mm (0.18±0.04 in) C2: 0.5±1.0 mm (0.02±0.04 in)
(D)	Rear combination light to Rear finisher light	5.0±1.0 mm (0.20±0.04 in)
(E)	Rear gate panel to Rear bumper	8.0±1.0 mm (0.31±0.04 in)
(F)	Rear quarter panel to Fuel filler lid	3.5±0.5 mm (0.14±0.02 in)
(G)	Rear quarter panel to Fuel filler lid	G1: 3.5±0.5 mm (0.14±0.02 in) G2: 3.5±0.5 mm (0.14±0.02 in)
(H)	Roof panel to Rear door sash	H1: 5.0±1.0 mm (0.20±0.04 in) H2: 3.8±1.0 mm (0.15±0.04 in)
(I)	Rear door sash to Rear quarter glass molding	7.0±1.0 mm (0.28±0.04 in)
(J)	Rear door sash to Front door sash	J1: 5.5±1.0 mm (0.22±0.04 in) J2: 0+1.0, –0.5 mm (0+0.04, –0.02 in) (Make sure that the front door side is slightly outside of the rear door side)
(K)	Rear door panel to Rear quarter panel	K1: 4.0±1.0 mm (0.16±0.04 in) K2: 0+1.0, –0.5 mm (0+0.04, –0.02 in) (Make sure that the rear door panel is slightly outside of the quarter panel)
(L)	Front door panel to Rear door panel	L1: 4.5±1.0 mm (0.18±0.04 in) L2: 0+1.0, –0.5 mm (0+0.04, –0.02 in) (Make sure that the front door side is slightly outside of the rear door side)
(M)	Rear door panel to Side sill spoiler	6.0±1.0 mm (0.24±0.04 in)

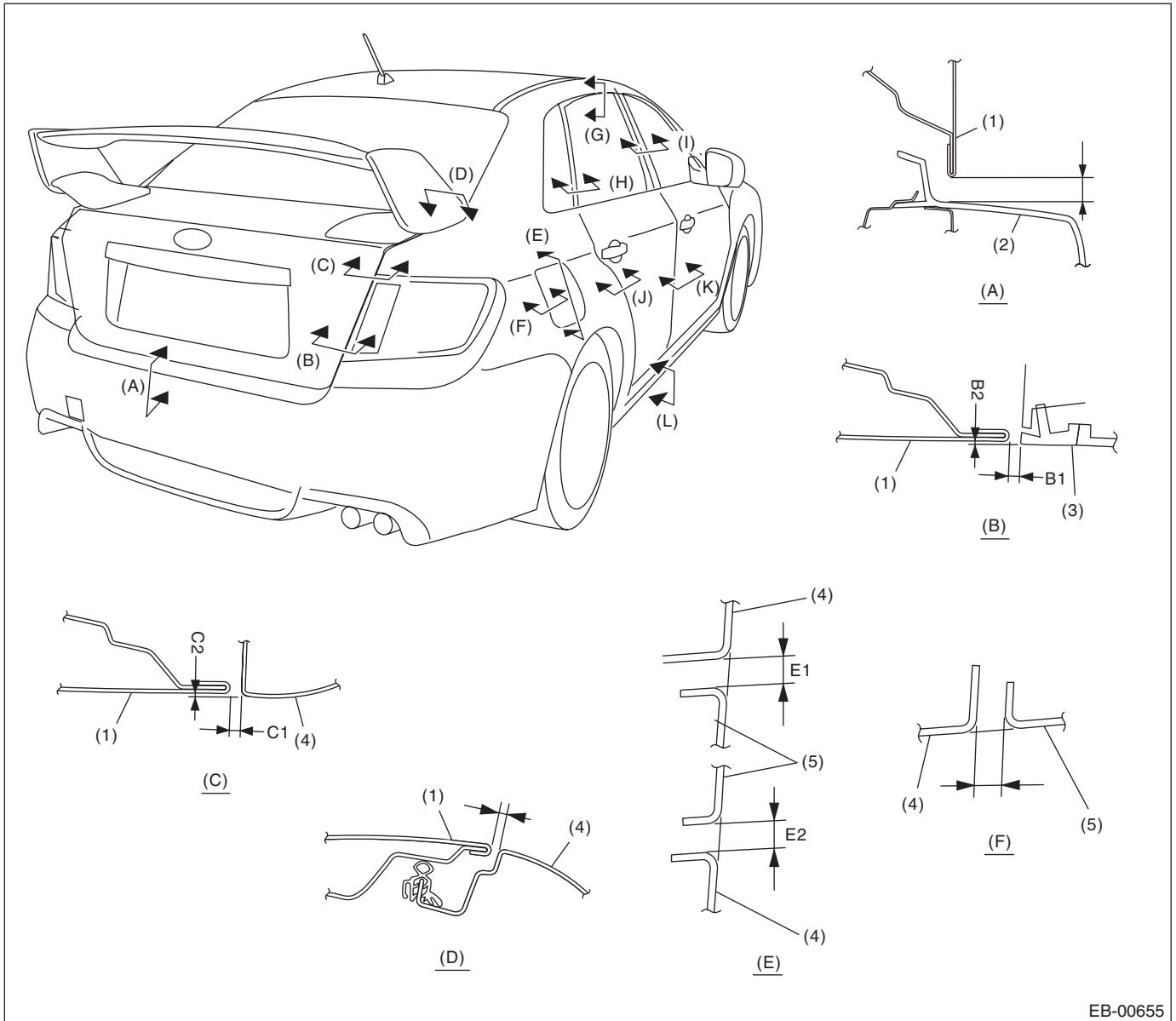
NOTE:

For surface level gap between sunroof glass lid and roof panel, refer to “SUNROOF” section. <Ref. to SR-5, ADJUSTMENT, Glass Lid.>

General Description

EXTERIOR BODY PANELS

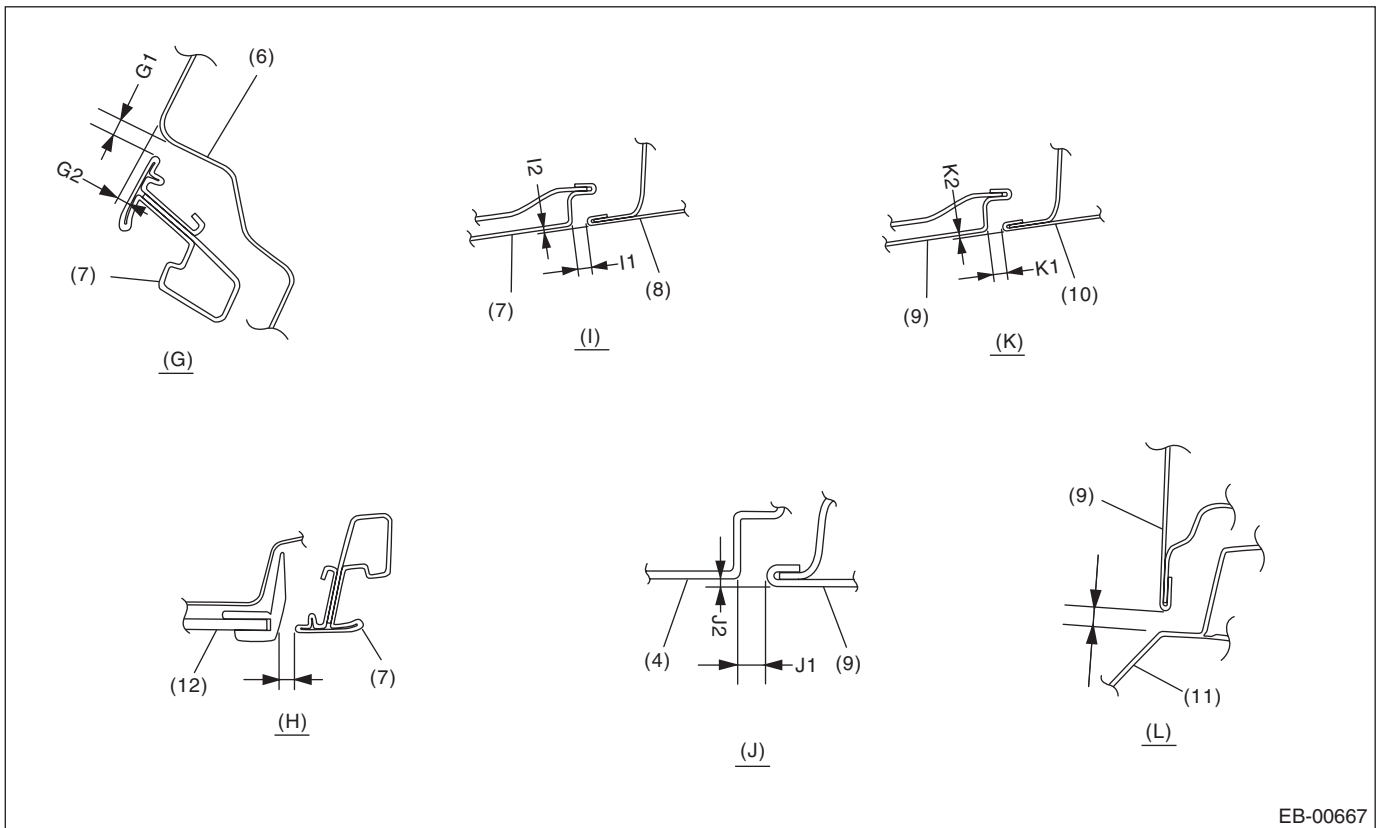
4 door model



EB-00655

General Description

EXTERIOR BODY PANELS



EB-00667

- | | | |
|----------------------------|---------------------|-------------------------|
| (1) Trunk panel | (5) Fuel filler lid | (9) Rear door panel |
| (2) Rear bumper | (6) Roof panel | (10) Front door panel |
| (3) Rear combination light | (7) Rear door sash | (11) Side sill spoiler |
| (4) Rear quarter panel | (8) Front door sash | (12) Rear quarter glass |

Section	Part	Standard value
(A)	Trunk panel to Rear bumper face	9.0±1.0 mm (0.35±0.04 in)
(B)	Trunk panel to Rear combination light	B1: 3.5±1.0 mm (0.14±0.04 in) B2: 0.5±1.0 mm (0.02±0.04 in)
(C)	Trunk panel to Rear quarter panel	C1: 3.5±1.0 mm (0.14±0.04 in) C2: 0.5±0.7 mm (0.02±0.03 in)
(D)	Trunk panel to Rear quarter panel	3.5±1.0 mm (0.14±0.04 in)
(E)	Rear quarter panel to Fuel filler lid	E1: 3.5±0.5 mm (0.14±0.02 in) E2: 3.5±0.5 mm (0.14±0.02 in)
(F)	Rear quarter panel to Fuel filler lid	3.5±0.5 mm (0.14±0.02 in)
(G)	Roof panel to Rear door sash	G1: 5.0±1.0 mm (0.20±0.04 in) G2: 3.8±1.0 mm (0.15±0.04 in)
(H)	Rear door sash to Rear quarter glass	7.0±1.0 mm (0.28±0.04 in)
(I)	Rear door sash to Front door sash	I1: 5.5±1.0 mm (0.22±0.04 in) I2: 0+1.0, -0.5 mm (0+0.04, -0.02 in) (Make sure that the front door side is slightly outside of the rear door side)
(J)	Rear door panel to Rear quarter panel	J1: 4.0±1.0 mm (0.16±0.04 in) J2: 0+1.0, -0.5 mm (0+0.04, -0.02 in) (Make sure that the rear door panel is slightly outside of the rear quarter panel)
(K)	Front door panel to Rear door panel	K1: 4.5±1.0 mm (0.18±0.04 in) K2: 0+1.0, -0.5 mm (0+0.04, -0.02 in) (Make sure that the front door side is slightly outside of the rear door side)
(L)	Rear door panel to Side sill spoiler	6.0±1.0 mm (0.24±0.04 in)

NOTE:

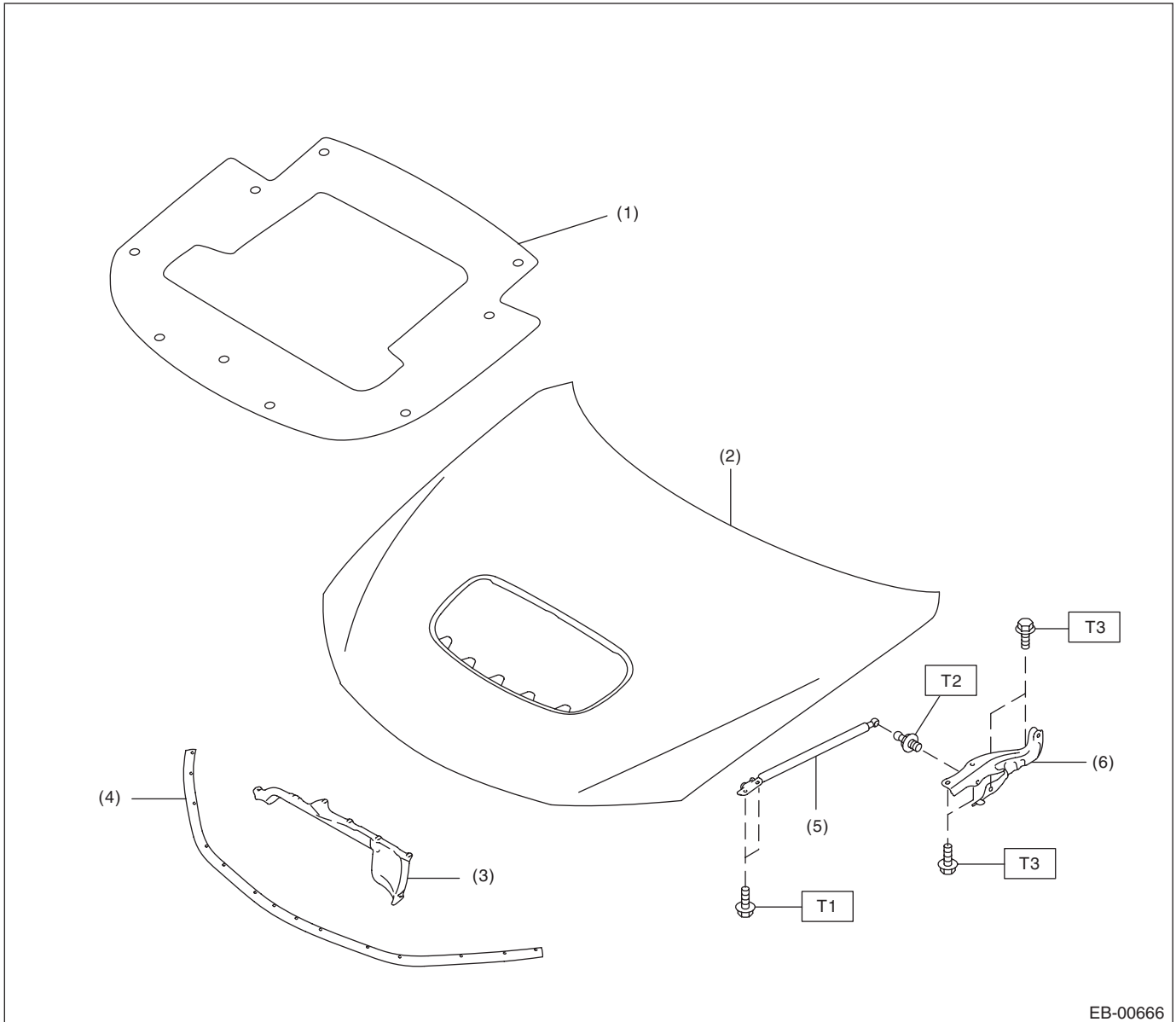
For surface level gap between sunroof glass lid and roof panel, refer to "SUNROOF" section. <Ref. to SR-5, ADJUSTMENT, Glass Lid.>

General Description

EXTERIOR BODY PANELS

B: COMPONENT

1. FRONT HOOD



- | | |
|---------------------------|------------------------|
| (1) Insulator | (4) Seal (front panel) |
| (2) Front hood panel ASSY | (5) Damper stay |
| (3) Seal (intake duct) | (6) Hinge |

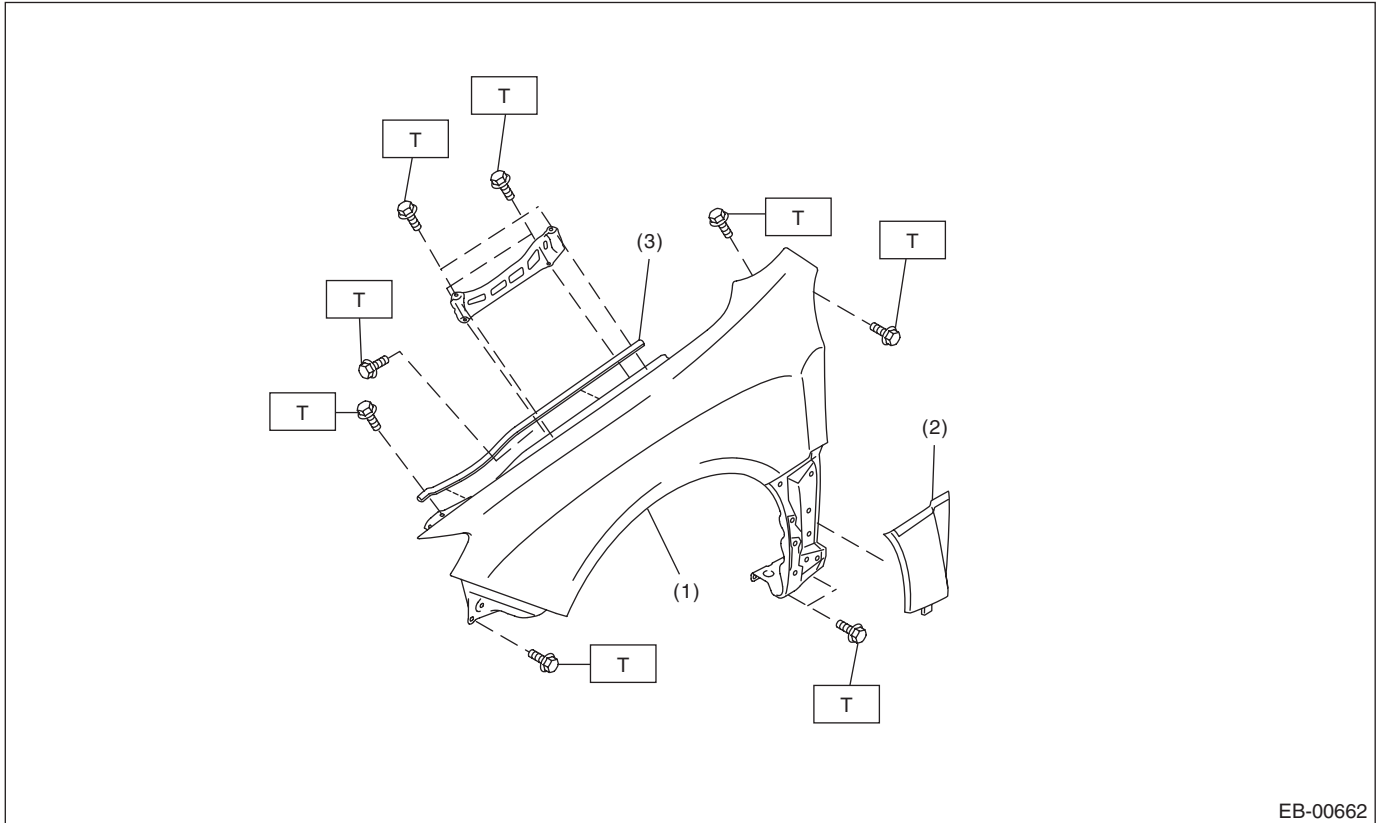
Tightening torque: N-m (kgf-m, ft-lb)

T1: 7.5 (0.76, 5.5)

T2: 20 (2.04, 14.8)

T3: 25 (2.55, 18.4)

2. FRONT FENDER



EB-00662

- (1) Front fender panel
- (2) Front fender garnish

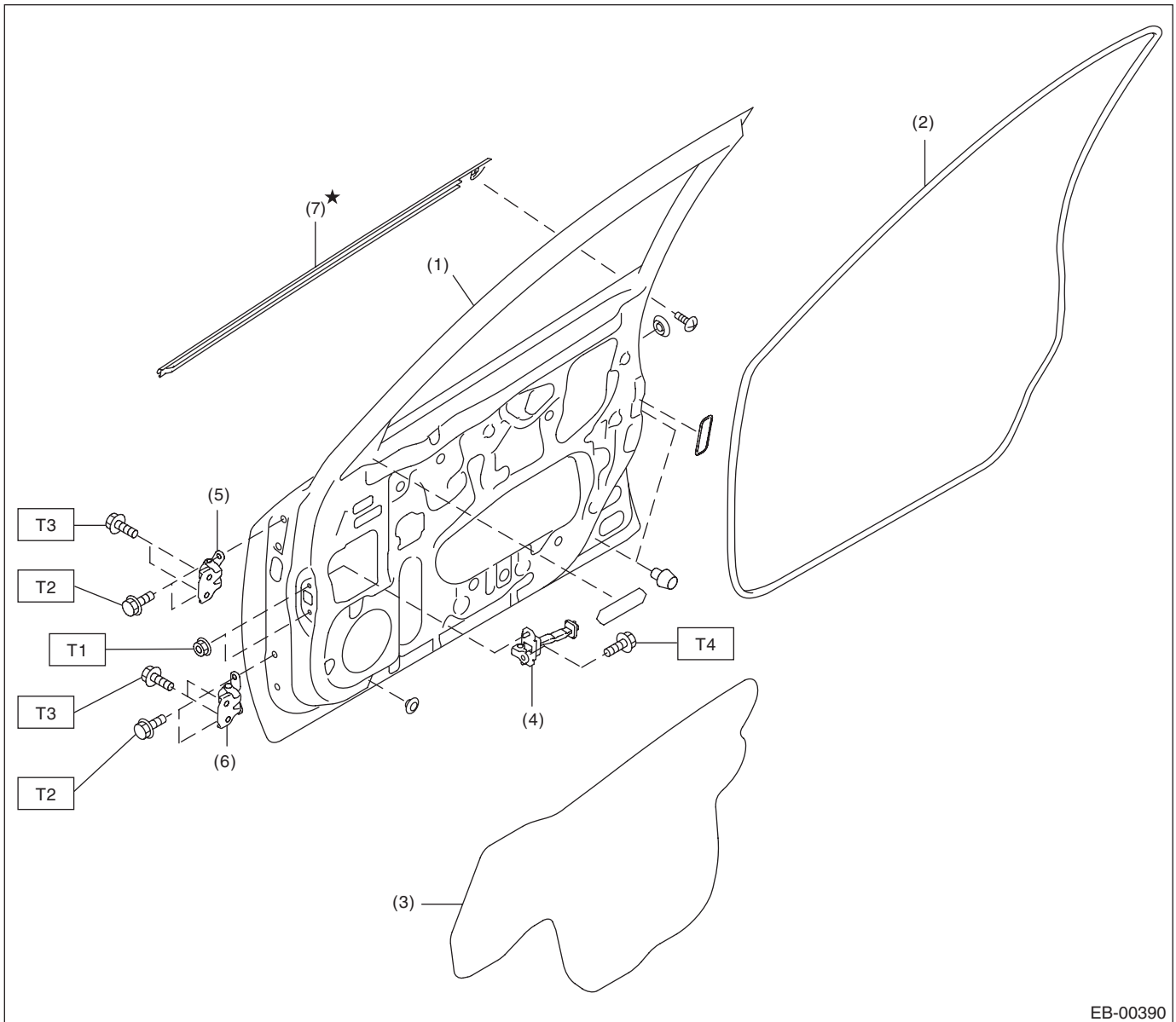
- (3) Protector

Tightening torque: N·m (kgf-m, ft-lb)
T: 7.5 (0.76, 5.5)

General Description

EXTERIOR BODY PANELS

3. FRONT DOOR



- | | |
|------------------------------------|------------------------------------|
| (1) Front door panel | (5) Upper hinge |
| (2) Front door weather strip inner | (6) Lower hinge |
| (3) Sealing cover | (7) Front door weather strip outer |
| (4) Checker | |

Tightening torque: N·m (kgf-m, ft-lb)

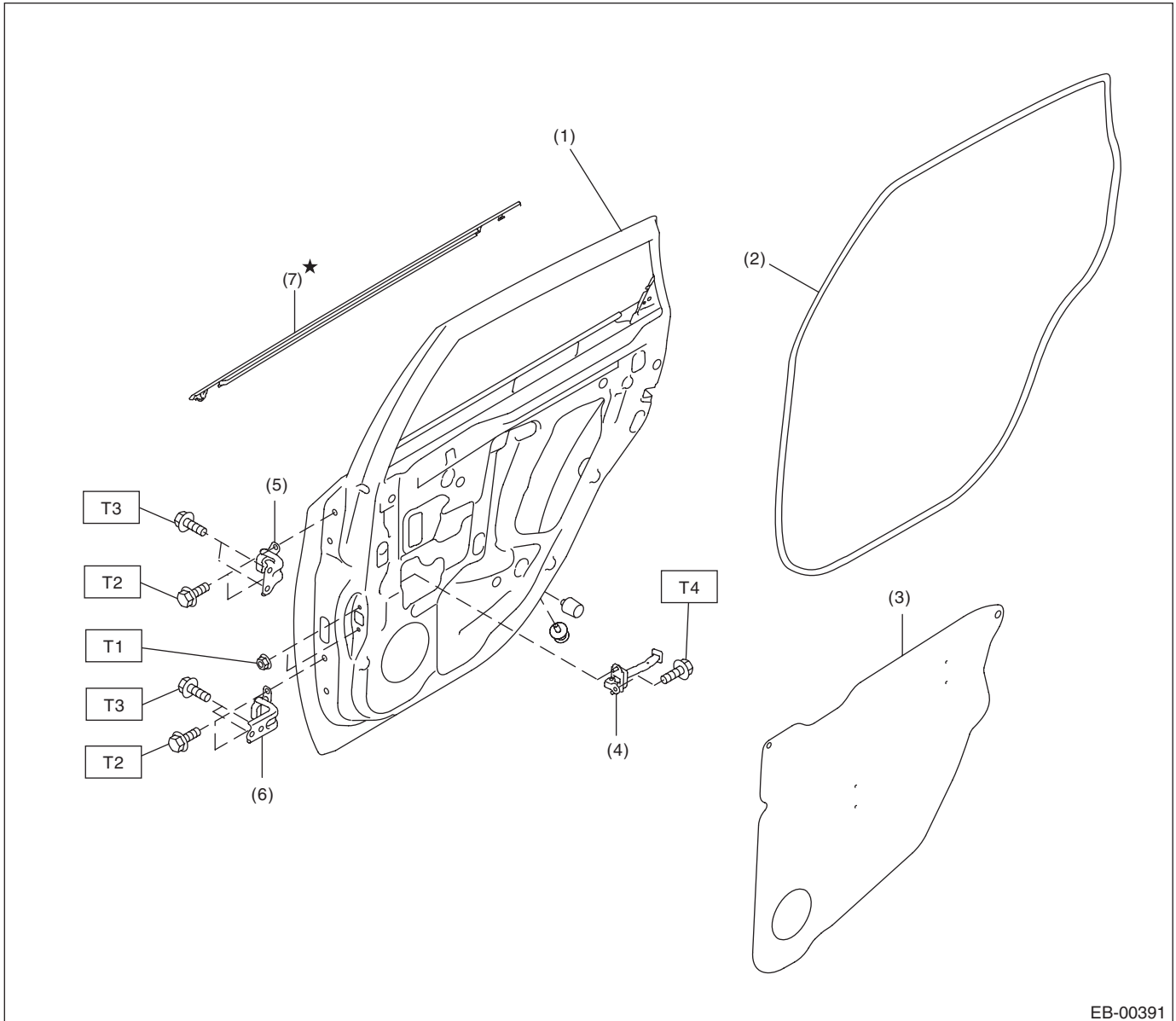
T1: 7.5 (0.76, 5.5)

T2: 25 (2.55, 18.4)

T3: 30 (3.06, 22.1)

T4: 33 (3.36, 24.3)

4. REAR DOOR



EB-00391

- | | |
|-----------------------------------|-----------------------------------|
| (1) Rear door panel | (5) Upper hinge |
| (2) Rear door weather strip inner | (6) Lower hinge |
| (3) Sealing cover | (7) Rear door weather strip outer |
| (4) Checker | |

Tightening torque: N·m (kgf·m, ft·lb)

T1: 7.5 (0.76, 5.5)

T2: 25 (2.55, 18.4)

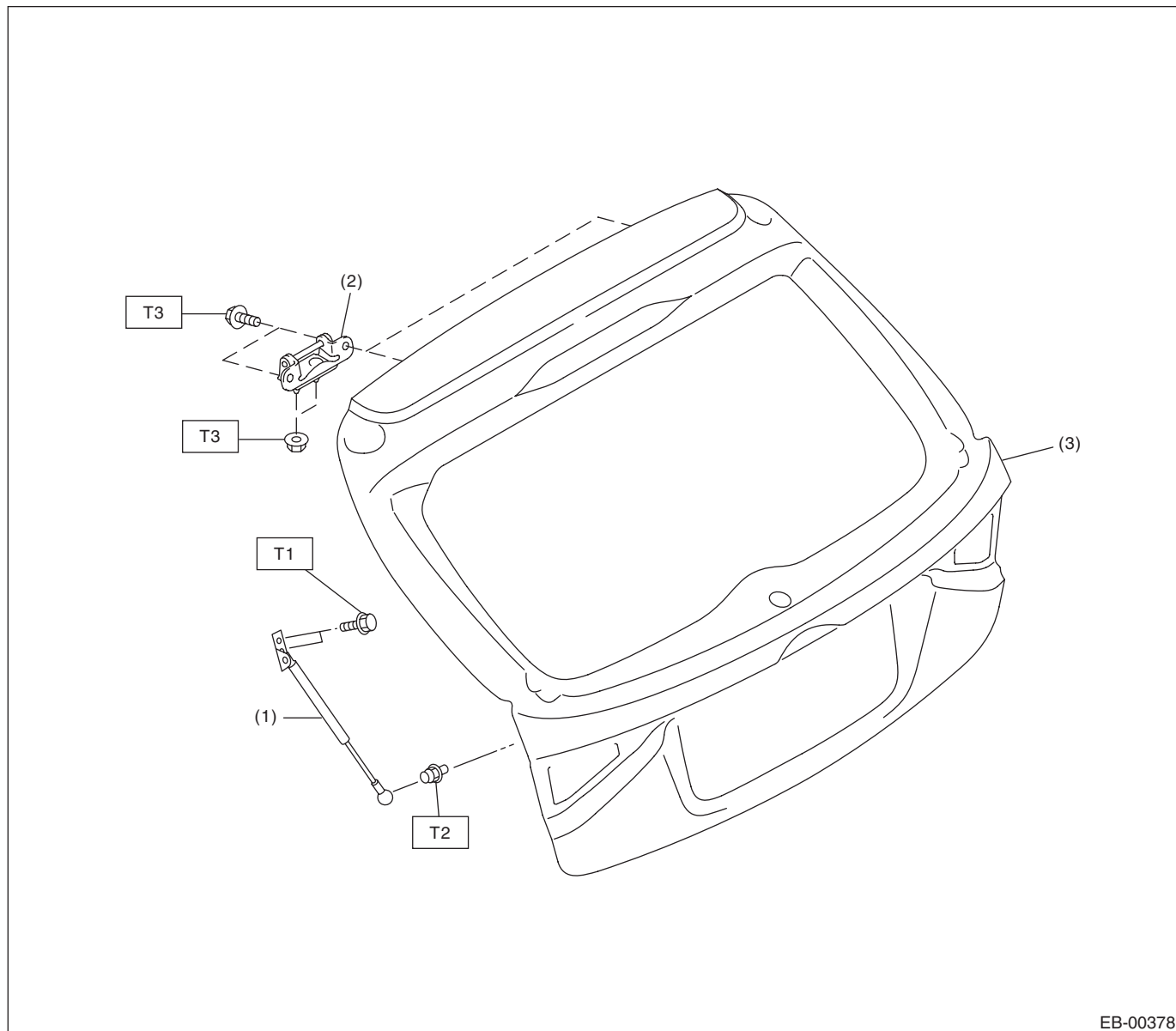
T3: 30 (3.06, 22.1)

T4: 33 (3.36, 24.3)

General Description

EXTERIOR BODY PANELS

5. REAR GATE



- (1) Rear gate damper stay
- (2) Hinge
- (3) Rear gate panel

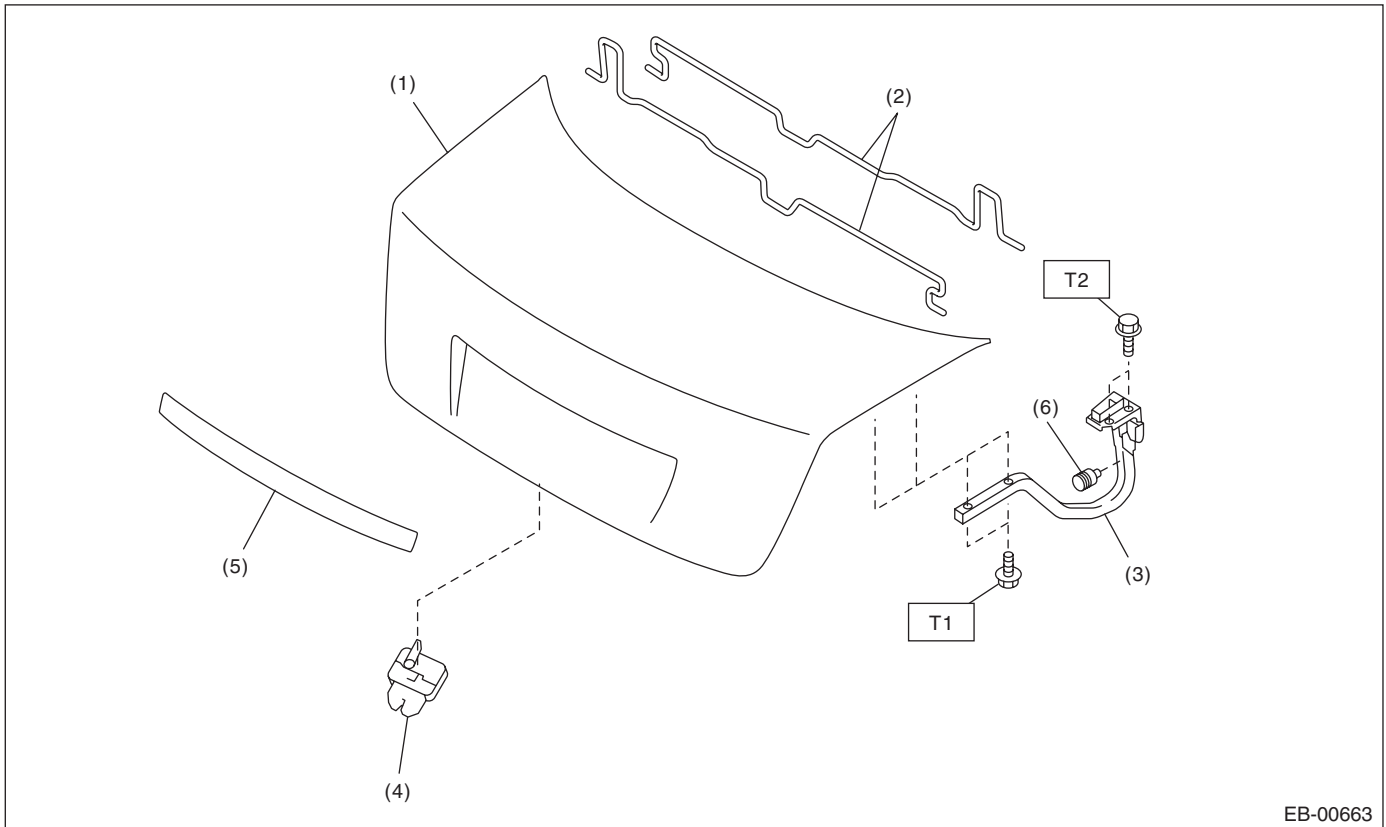
Tightening torque: N·m (kgf-m, ft-lb)

T1: 10 (1.02, 7.4)

T2: 20 (2.04, 14.8)

T3: 25 (2.55, 18.4)

6. TRUNK LID PANEL



- | | |
|------------------------|-------------------------|
| (1) Trunk lid panel | (4) Trunk lid lock ASSY |
| (2) Torsion bar | (5) Trunk lid garnish |
| (3) Trunk lid arm ASSY | (6) Stopper |

Tightening torque: N·m (kgf-m, ft-lb)

T1: 14 (1.43, 10.3)

T2: 18 (1.84, 13.3)

General Description

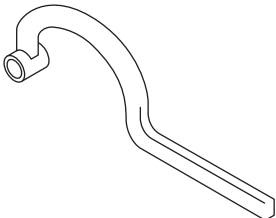
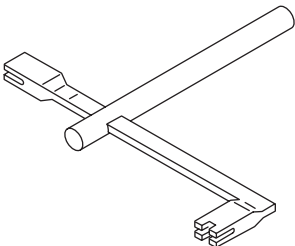
EXTERIOR BODY PANELS

C: CAUTION

Exterior body panels are heavy. When removing or installing, do not drop and damage the panels. Do not damage the panel painting surface.

D: PREPARATION TOOL

1. SPECIAL TOOL

ILLUSTRATION	TOOL NUMBER	DESCRIPTION	REMARKS
 ST-925610000	925610000	WRENCH	Used for removing and installing door hinge.
 ST-927780000	927780000	REMOVER	Used for removing and installing the trunk torsion bar.

2. GENERAL TOOL

TOOL NAME	REMARKS
Support jack	Used for supporting door panel.
Clip remover	Used for removing various types of clips