

## 4. Power Window Control Switch

### A: REMOVAL

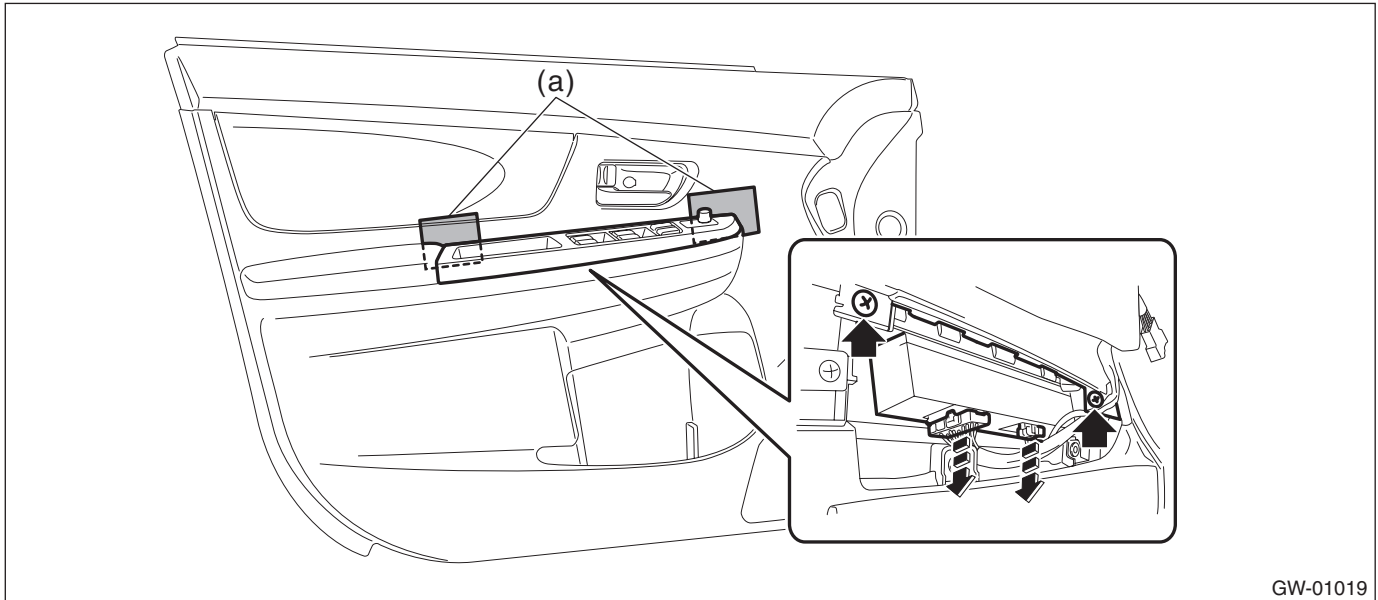
#### 1. MAIN SWITCH

- 1) Remove the trim panel - front door. <Ref. to EI-61, FRONT DOOR, REMOVAL, Door Trim.>
- 2) Remove the panel - power window main switch.

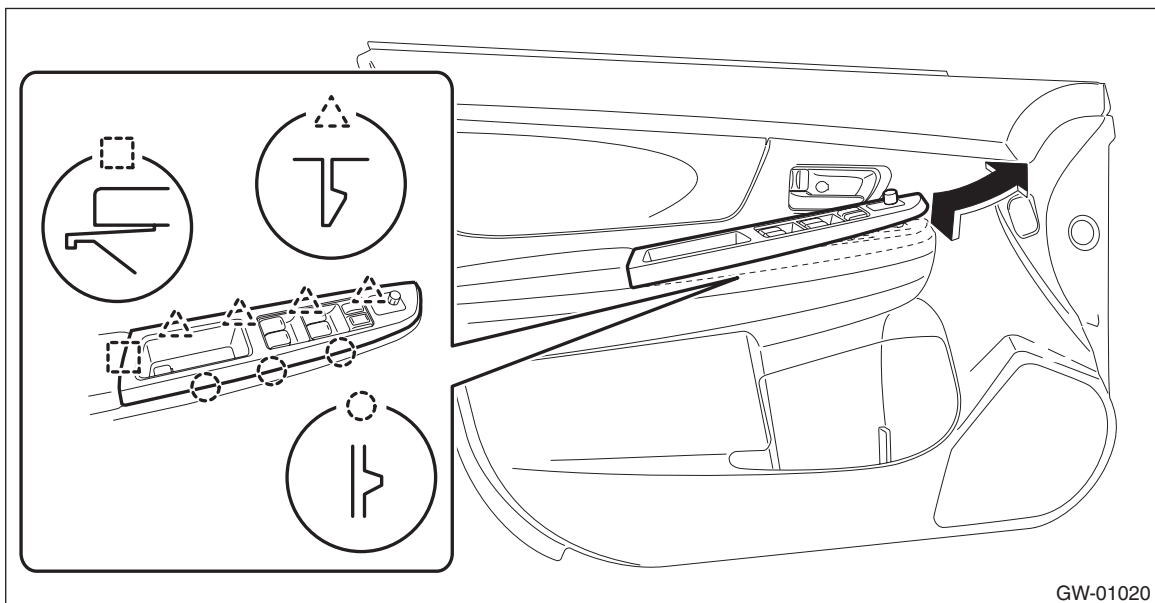
#### CAUTION:

**Be careful not to damage the trim panel - front door with the panel - power window main switch.**

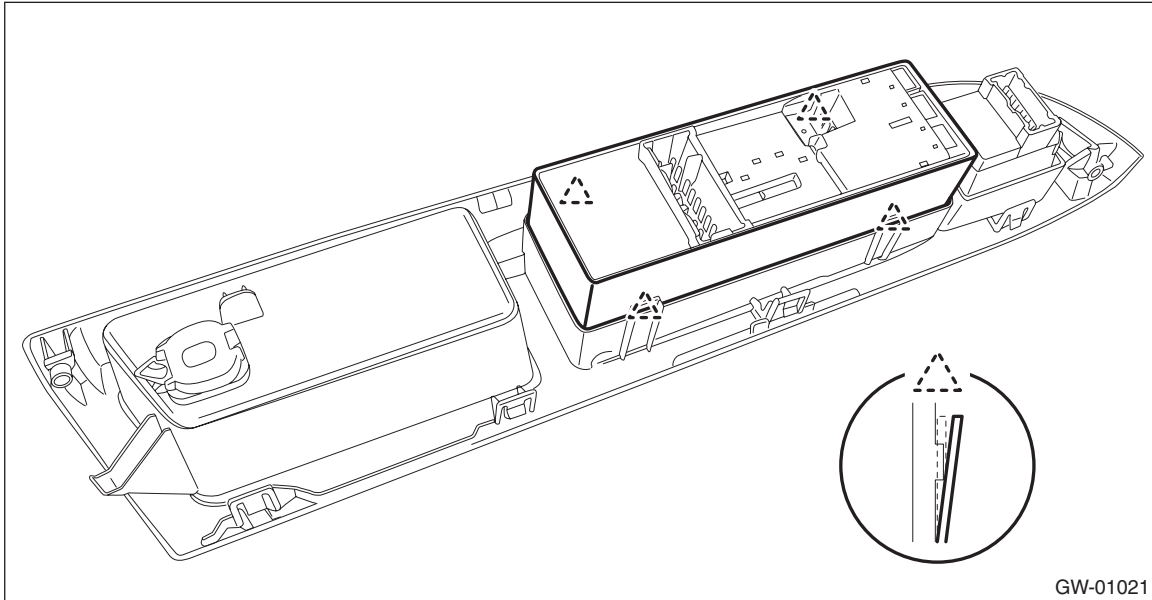
- (1) Insert a sheet of protective paper (a) between panel - power window main switch and trim panel - front door.
- (2) Remove the screws and disconnect the connector.



- (3) Release the claws, and then remove the panel - power window main switch.



- (4) Release the claws, and then remove the switch - power window main.



## 2. SUB-SWITCH

### Switch - power window sub front

For removal of the switch - power window sub front on the passenger's seat, refer to the removal procedure of the switch - power window main. <Ref. to GW-12, MAIN SWITCH, REMOVAL, Power Window Control Switch.>

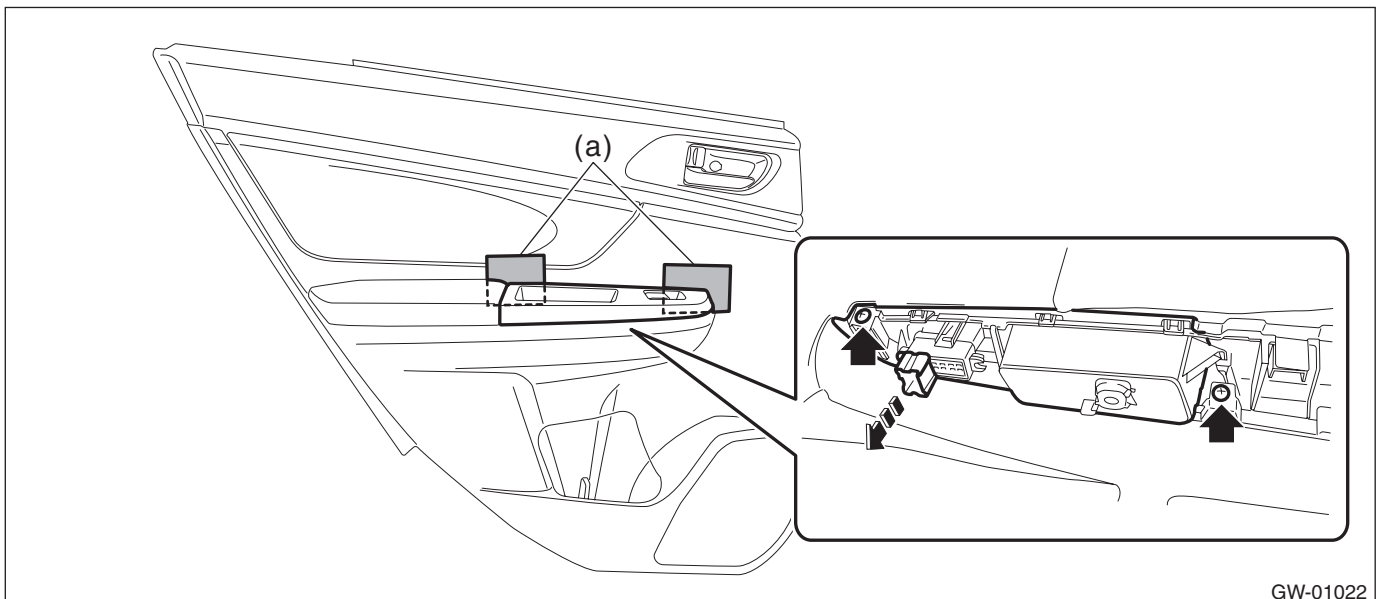
### Switch - power window sub rear

- 1) Remove the trim panel - rear door. <Ref. to EI-62, REAR DOOR, REMOVAL, Door Trim.>
- 2) Remove the panel - power window sub switch rear.

### CAUTION:

**Be careful not to damage the trim panel - rear door with the panel - power window sub switch rear.**

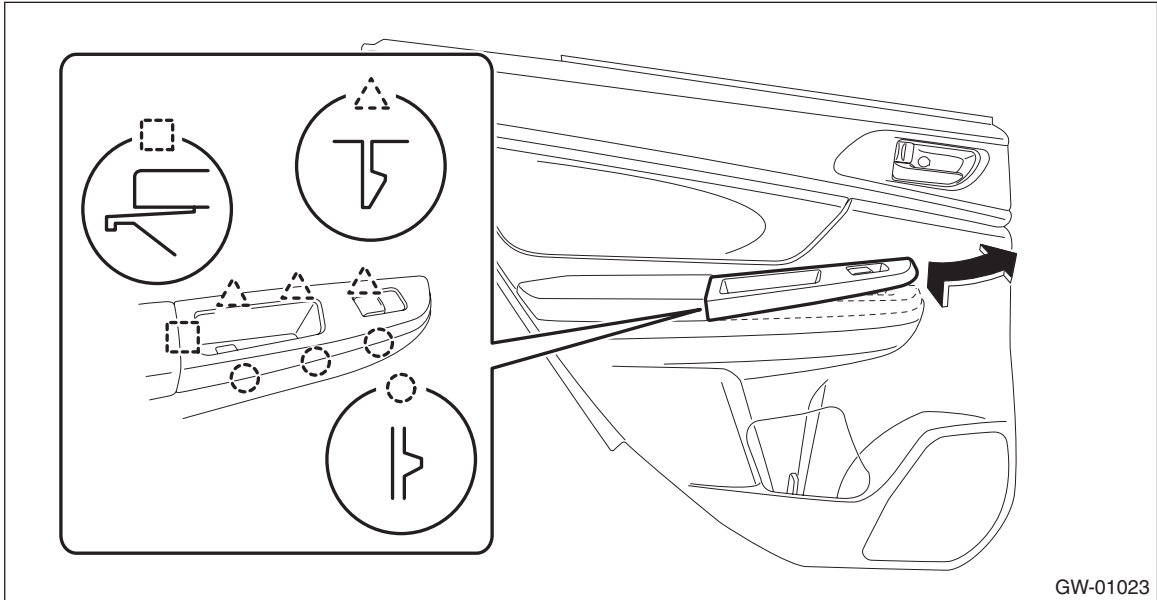
- (1) Insert a sheet of protective paper (a) between panel - power window sub switch rear and trim panel - rear door.
- (2) Remove the screws and disconnect the connector.



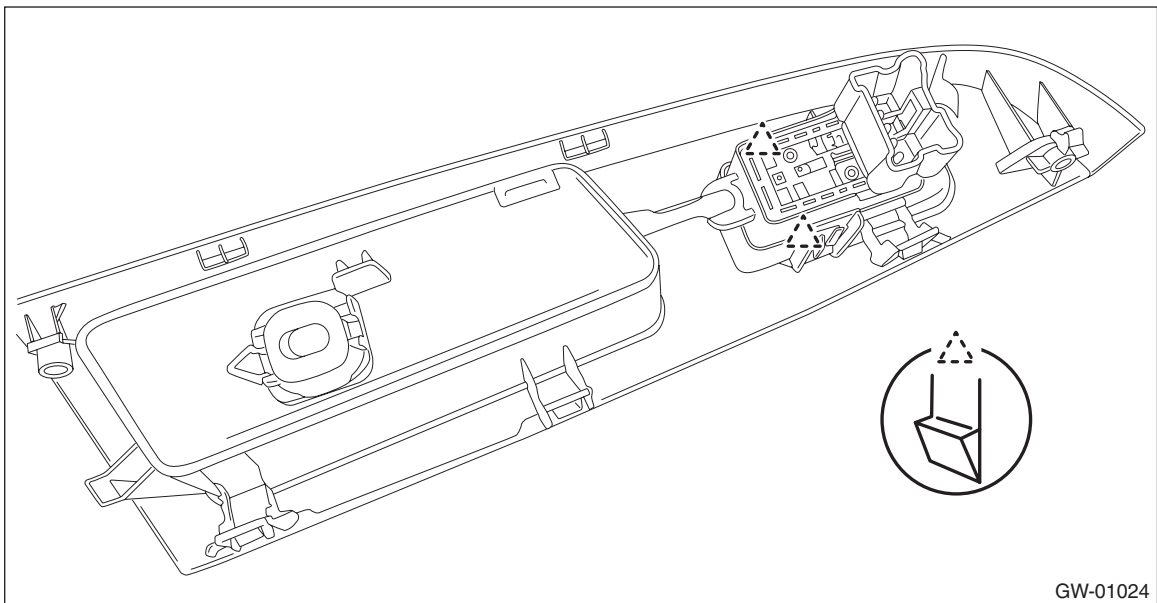
## Power Window Control Switch

### GLASS/WINDOWS/MIRRORS

- (3) Release the claws, and then remove the panel - power window sub switch rear.



- 3) Release the claws, and then remove the switch - power window sub rear.



## B: INSTALLATION

### CAUTION:

- After installing the switch - power window main, always perform the initial setting. Failure to do so may cause the improper activation of auto-reverse operation for pinching hazard prevention.
  - Use protective paper to avoid damage to the trim panel.
- 1) Install each part in the reverse order of removal.
  - 2) Perform initial setting operation (reset operation A). <Ref. to GW-10, RESET OPERATION A, OPERATION, Power Window System.>

**C: INSPECTION****1. MAIN SWITCH****• Driver's seat****CAUTION:**

Since the switch - power window main is controlled by CPU, do not check continuity for switch alone with the circuit tester. Performing continuity check with circuit tester can damage the switch - power window main circuit.

Check output from the switch - power window main to the driver's side motor using the oscilloscope function in the Subaru Select Monitor.

1) Remove the switch - power window main.

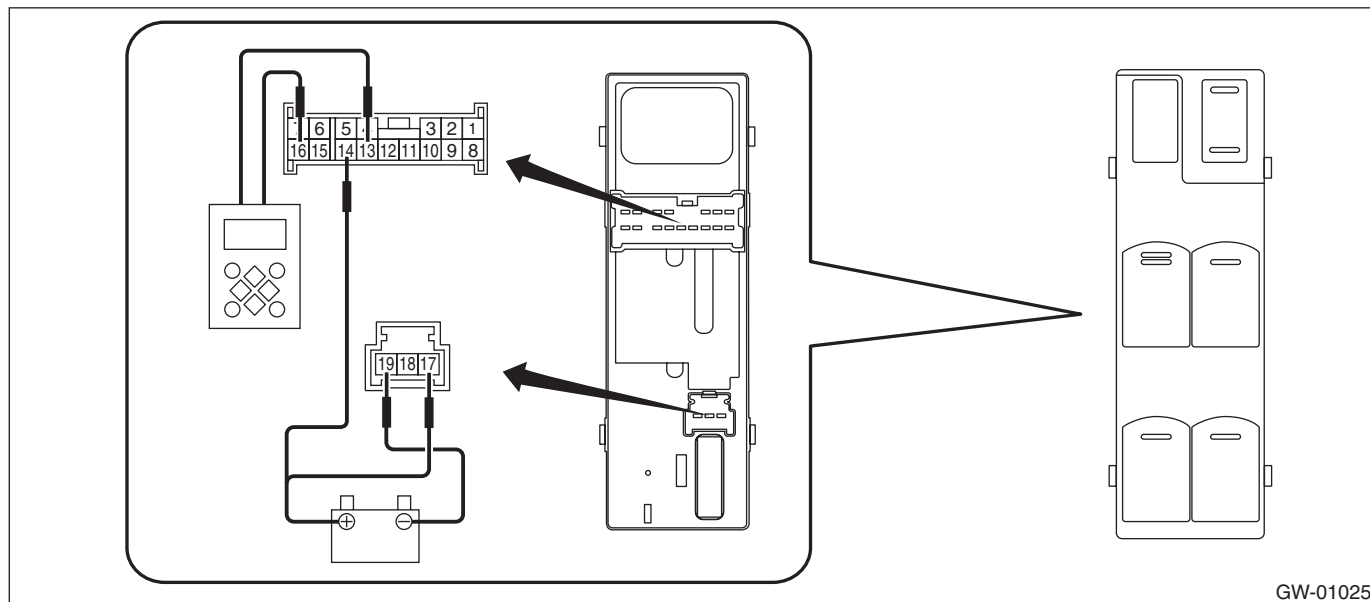
2) Connect the battery and the Subaru Select Monitor to the switch - power window main terminal.

**CAUTION:**

Never mix up the terminals when connecting the harness connector of the switch - power window main and the battery. If the connection is wrong, the switch - power window main may be damaged.

**NOTE:**

- When the battery is connected to the switch - power window main terminal, the letters "AUTO" on the driver's side knob illuminates.
- For detailed procedures, refer to "Subaru Select Monitor Operation Manual".



GW-01025

3) Operate the switch - power window main and check the output.

**NOTE:**

Since output time during window UP operation is extremely short, it cannot be checked without using a measuring instrument such as oscilloscope. Output is constantly produced while the switch is operated for window DOWN operation.

Inspection conditions	Output time	Standard
AUTO UP	Approx. 130 ms	Battery voltage
UP		
OFF	—	0 V
DOWN	During switch operation	Battery voltage
AUTO DOWN	Approx. 300 ms	

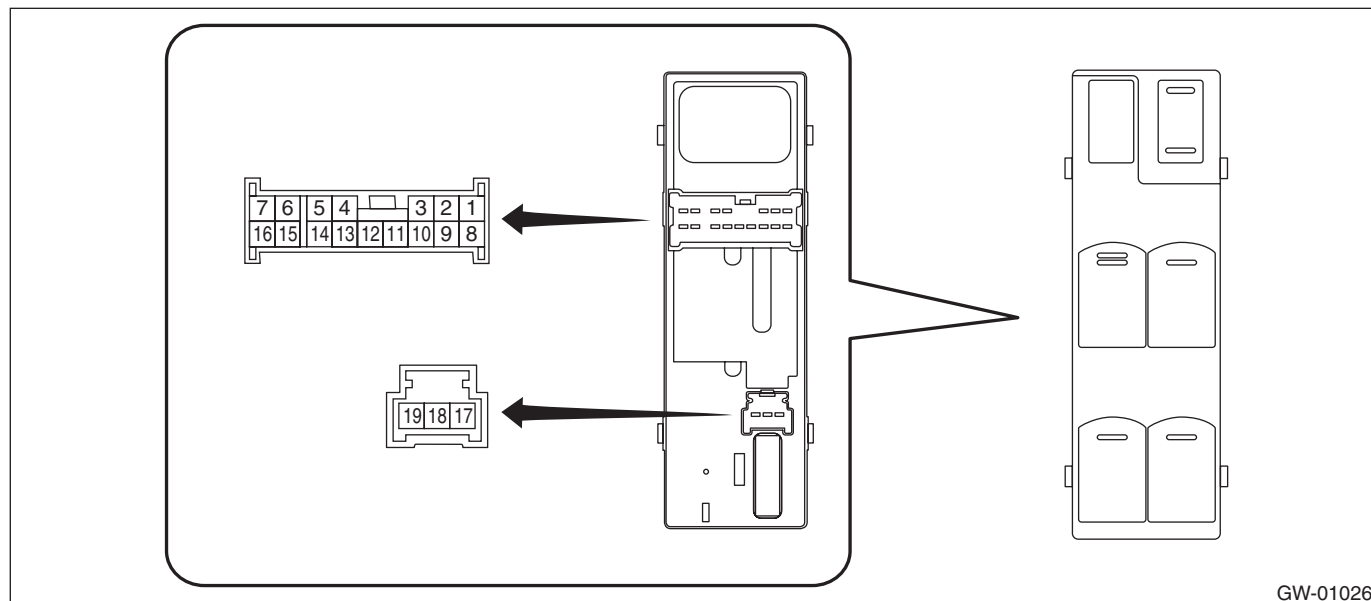
4) If the inspection result is not within the standard, replace the switch - power window main.

# Power Window Control Switch

## GLASS/WINDOWS/MIRRORS

### • Except for driver's seat

1) Check the resistance between terminals of the switch - power window main.



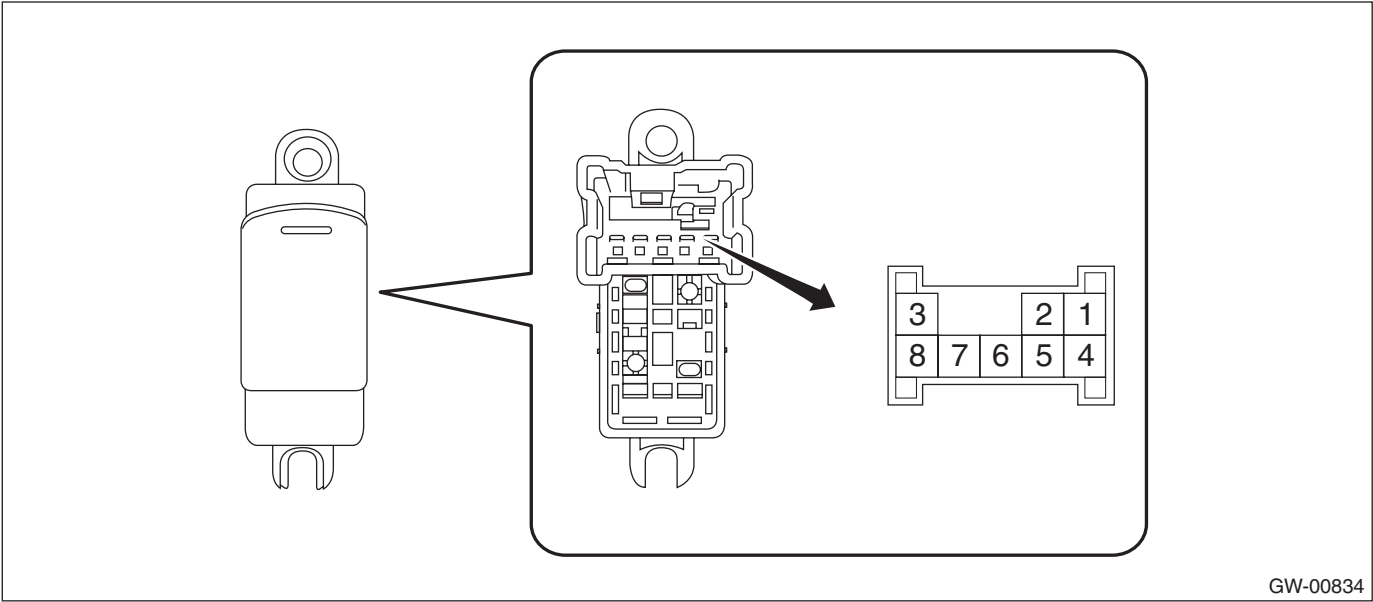
GW-01026

	Terminal No.	Inspection conditions	Standard
Passenger's seat	14 — 8 19 — 12	UP	Less than 1 $\Omega$
	14 — 12 14 — 8	OFF	1 M $\Omega$ or more
	19 — 8 19 — 12 8 — 12		Less than 1 $\Omega$
	14 — 12 19 — 8	DOWN	Less than 1 $\Omega$
Rear LH	14 — 7 19 — 5	UP	Less than 1 $\Omega$
	14 — 7 14 — 5	OFF	1 M $\Omega$ or more
	19 — 7 19 — 5 7 — 5		Less than 1 $\Omega$
	14 — 5 19 — 7	DOWN	Less than 1 $\Omega$
Rear RH	14 — 1 19 — 3	UP	Less than 1 $\Omega$
	14 — 1 14 — 3	OFF	1 M $\Omega$ or more
	19 — 3 19 — 1 3 — 1		Less than 1 $\Omega$
	14 — 3 19 — 1	DOWN	Less than 1 $\Omega$

2) If the inspection result is not within the standard, replace the switch - power window main.

2. SUB-SWITCH

- 1) Remove the switch - power window sub front.
- 2) Check the resistance between terminals of the switch - power window sub front.



GW-00834

	Terminal No.	Inspection conditions	Standard
Passenger seat, rear	4 — 5 6 — 7	UP	Less than 1 Ω
	7 — 4 8 — 4	OFF	1 MΩ or more
	5 — 8 6 — 7		Less than 1 Ω
	4 — 6 5 — 8	DOWN	Less than 1 Ω

- 3) If the inspection result is not within the standard, replace the switch - power window sub front.