

5. Horn Switch

A: REMOVAL

NOTE:

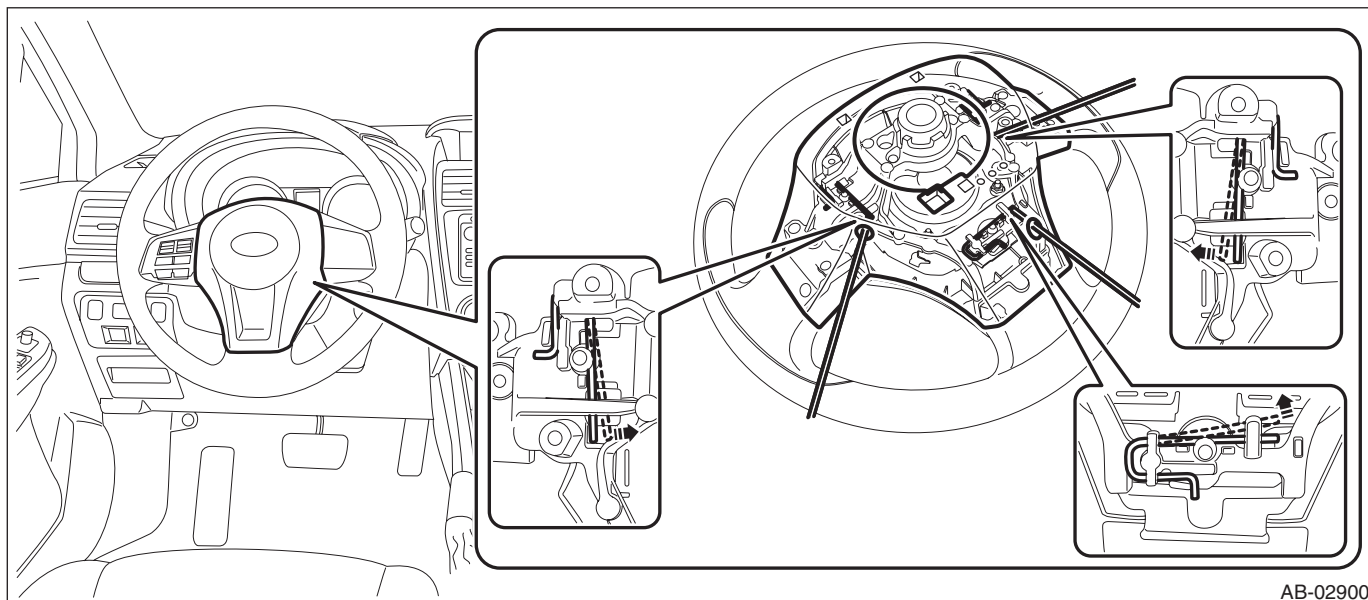
Horn switch is a unit with the driver's airbag module.

- 1) Position the front wheels straight ahead. (After moving a vehicle 5 m (16 ft) or more with front wheels positioned straight ahead, make sure that the vehicle moves straight ahead.)
- 2) Turn the ignition switch to OFF.
- 3) Disconnect the ground cable from battery and wait for at least 60 seconds before starting work.
- 4) Remove the driver's airbag module.

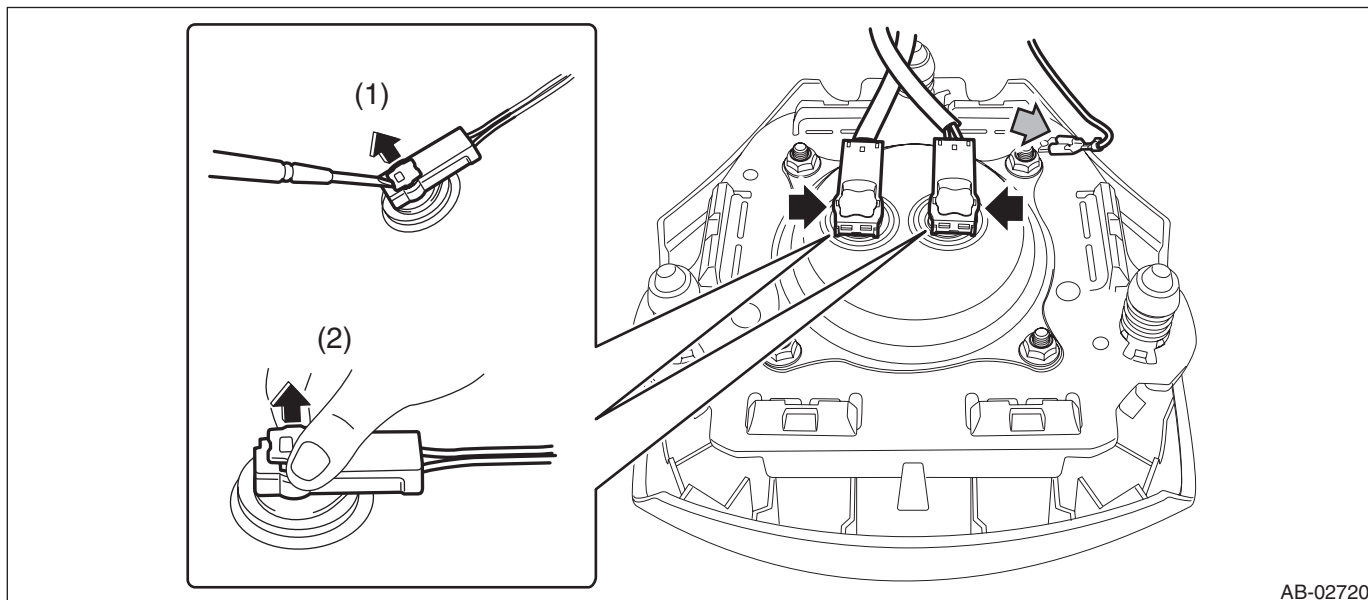
CAUTION:

Before handling the airbag module, refer to “CAUTION” of “General Description” in “AIRBAG SYSTEM”. <Ref. to AB-11, CAUTION, General Description.>

- (1) Using a hexagon wrench wrapped with protective tape, push in the snap pins to disengage the locks (3 places).



- (2) Disconnect the horn harness and airbag connector, and remove the driver's airbag module. <Ref. to AB-24, DRIVER'S AIRBAG MODULE, CURTAIN AIRBAG MODULE & PRETENSIONER, PROCEDURE, Airbag Connector.>

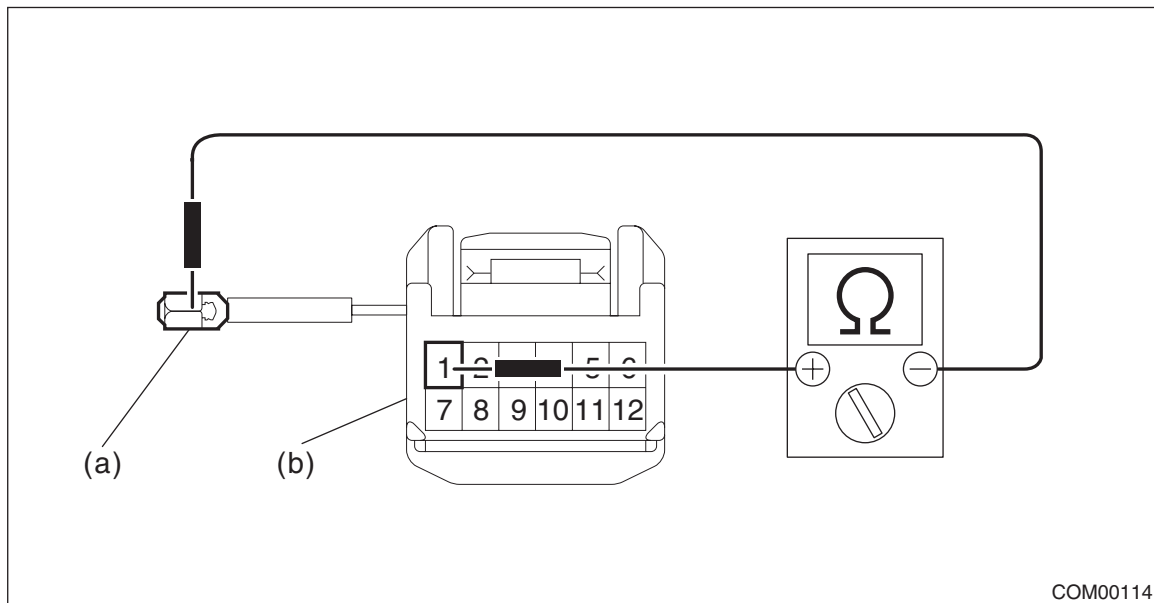


B: INSTALLATION**CAUTION:**

- Before handling the airbag module, refer to “CAUTION” of “General Description” in “AIRBAG SYSTEM”. <Ref. to AB-11, CAUTION, General Description.>
 - Do not allow harness and connectors to interfere or get tangled up with other parts.
- 1) Install the driver's airbag module. <Ref. to AB-43, INSTALLATION, Driver's Airbag Module.>
 - 2) Install each part in the reverse order of removal.

C: INSPECTION**1. CHECK HORN SWITCH**

- 1) Remove the horn switch. <Ref. to COM-8, REMOVAL, Horn Switch.>
- 2) Check that the connection of the horn switch harness connector is correct.
- 3) Disconnect the horn switch harness connector and check the resistance between the harness connectors.

Preparation tool:**Circuit tester**

COM00114

(a) Ground terminal

(b) Horn switch terminal

Terminal No.	Standard
Horn switch terminal — ground terminal	Less than 1 Ω

- 4) Replace the driver's airbag module if the inspection result is not within the standard value.

Horn Switch

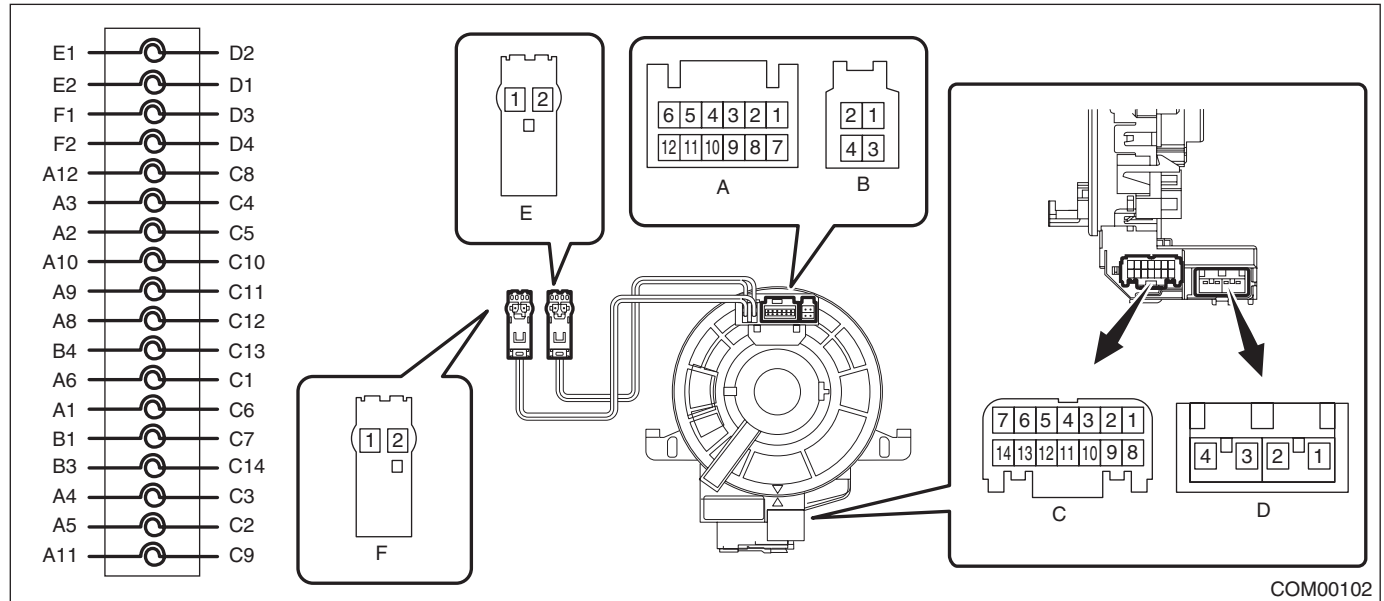
COMMUNICATION SYSTEM

2. CHECK ROLL CONNECTOR

- 1) Remove the roll connector. <Ref. to AB-104, REMOVAL, Roll Connector.>
- 2) Check the resistance between roll connector terminals.

PREPARATION TOOL:

Circuit tester



Terminal No.	Inspection conditions	Standard
A1 — C6	Always	Less than 1 Ω

- 3) Replace the roll connector if the inspection result is not within the standard.

GLASS/WINDOWS/MIRRORS

GW

	Page
1. General Description	2
2. Relay and Fuse	8
3. Power Window System	10
4. Power Window Control Switch	12
5. Front Door Glass	18
6. Front Regulator and Motor Assembly	21
7. Remote Control Mirror System	23
8. Scalp Cap	24
9. Outer Mirror Assembly	27
10. Outer Mirror	29
11. Remote Control Mirror Switch	30
12. Rearview Mirror	32
13. Rear Door Glass	33
14. Rear Regulator and Motor Assembly	35
15. Windshield Glass	37
16. Rear Window Glass	45
17. Rear Gate Glass	48
18. Rear Window Defogger System	51
19. Rear Quarter Glass	54
20. Wiper Deicer System	57