

General Description

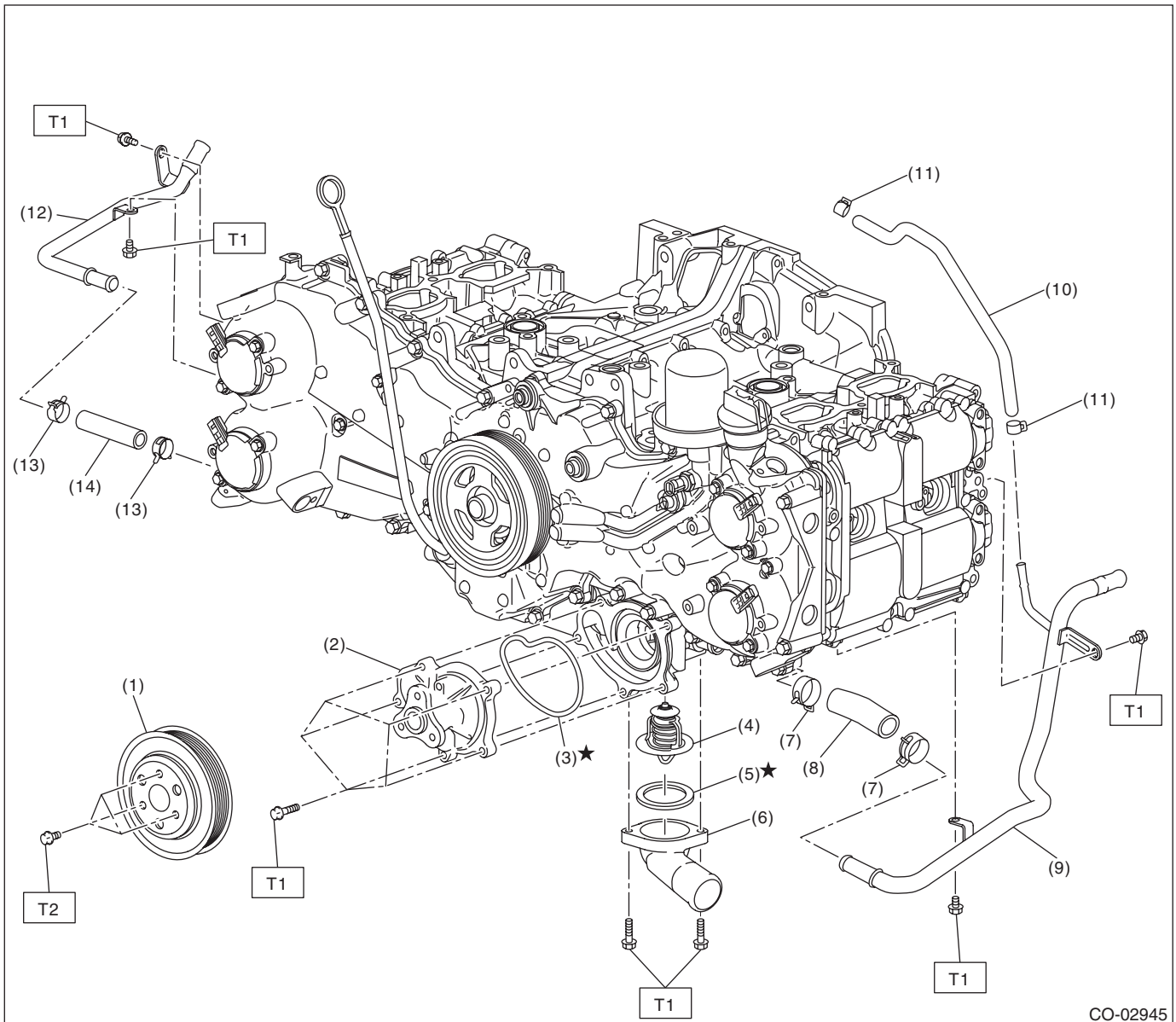
COOLING

1. General Description

A: SPECIFICATION

Cooling system				Electric fan + Forced engine coolant circulation system		
Total engine coolant capacity	L (US qt, Imp qt)	Except for XV model	CVT model		Approx. 8.2 (8.7, 7.2)	
			MT model		Approx. 7.8 (8.2, 6.9)	
		XV model	CVT model		Approx. 8.0 (8.5, 7.0)	
			MT model		Approx. 7.6 (8.0, 6.7)	
Water pump	Type		Centrifugal impeller type			
	Discharge performance	Discharge rate		L (US gal, Imp gal)/min.		
		Pump speed — Discharge pressure		230 (60.8, 50.6)		
		Engine coolant temperature		6,600 rpm — 211.0 kPa (22 mAq)		
	Impeller diameter		mm (in)		80°C (176°F)	
	Number of impeller vanes				60 (2.36)	
	Pump pulley diameter		mm (in)		7	
Thermostat	Type		Wax pellet type			
	Starting temperature to open	Engine side		87 — 91°C (189 — 196°F)		
		ATF cooler (with warmer feature) side		48 — 52°C (118 — 126°F)		
	Fully opens	Engine side		98°C (208°F)		
		ATF cooler (with warmer feature) side		63°C (145°F)		
	Valve lift	mm (in)	Engine side		8.0 (0.315) or more	
			ATF cooler (with warmer feature) side		6.0 (0.236) or more	
	Valve bore		mm (in)		32 (1.26)	
Radiator fan	Motor input	Main fan		W		
		Sub fan		W		
	Fan diameter / Blade	Main fan		318.5 mm (12.54 in)/9		
		Sub fan		318.5 mm (12.54 in)/11		
Radiator	Type		Down flow, pressure type			
	Core dimensions	Width × Height × Thickness		mm (in)		
	Pressure range in which cap valve is open	kPa (kg/cm ² , psi)	Positive pressure side	Standard	687.4 × 340 × 16 (27.06 × 13.39 × 0.63)	
				Limit	93 — 123 (0.95 — 1.25, 14 — 18)	
			Negative pressure side	Standard	83 (0.85, 12)	
						-1.0 to -4.9 or less (-0.01 — -0.05, -0.1 — -0.7)
Fins		Corrugated fin type				
Reservoir tank	Capacity			L (US qt, Imp qt)		
				0.45 (0.48, 0.40)		

	Recommended materials	Item number	Alternative
Coolant	SUBARU SUPER COOLANT (Concentrated type)	—	—
	SUBARU SUPER COOLANT (Diluted type)	K0670Y0001	
Water for dilution	Distilled water	—	Soft water or tap water
Cooling system protective agent	Cooling system conditioner	SOA345001	—

B: COMPONENT**1. WATER PUMP**

CO-02945

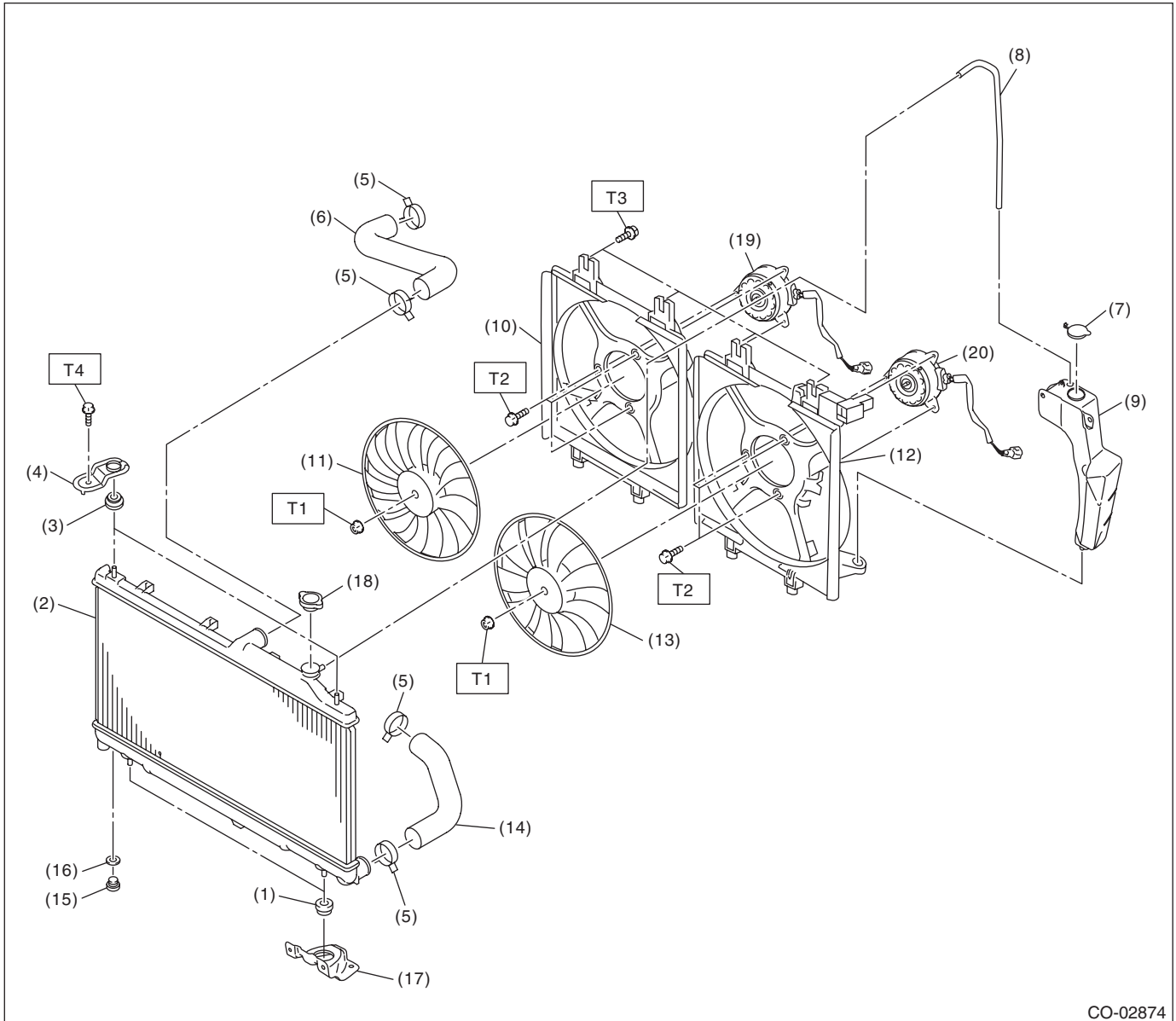
(1) Water pump pulley	(7) Clip	(13) Clip (CVT model)
(2) Water pump ASSY	(8) Water pipe hose LH	(14) Water pipe hose RH (CVT model)
(3) Gasket	(9) Water pipe LH	
(4) Thermostat	(10) Preheater hose	
(5) Gasket	(11) Clip	
(6) Thermostat cover	(12) Water pipe RH (CVT model)	

Tightening torque: N·m (kgf-m, ft-lb)
T1: 6.4 (0.7, 4.7)
T2: 14 (1.4, 10.3)

General Description

COOLING

2. RADIATOR & RADIATOR FAN



CO-02874

- | | |
|---------------------------------------|-------------------------------|
| (1) Radiator lower cushion | (10) Radiator sub fan shroud |
| (2) Radiator | (11) Radiator sub fan |
| (3) Radiator upper cushion | (12) Radiator main fan shroud |
| (4) Radiator upper bracket | (13) Radiator main fan |
| (5) Clip | (14) Radiator outlet hose |
| (6) Radiator inlet hose | (15) Radiator drain plug |
| (7) Engine coolant reservoir tank cap | (16) O-ring |
| (8) Over flow hose | (17) Radiator lower bracket |
| (9) Engine coolant reservoir tank | (18) Radiator cap |

- | |
|---------------------|
| (19) Sub fan motor |
| (20) Main fan motor |

Tightening torque: N·m (kgf-m, ft-lb)

T1: 3.4 (0.3, 2.5)

T2: 4.41 (0.45, 3.25)

T3: 7.5 (0.8, 5.5)

T4: 12 (1.2, 8.9)

C: CAUTION

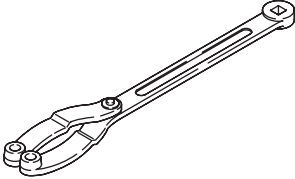
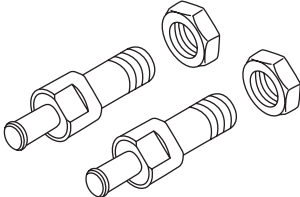
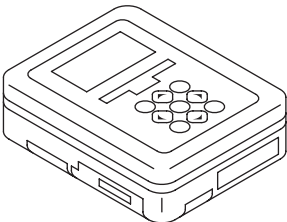
- Prior to starting work, pay special attention to the following:
 1. Always wear work clothes, a safety cap, protective shoes. Additionally, wear a helmet, protective goggles, etc. if necessary.
 2. Protect the vehicle using a seat cover, fender cover, etc.
 3. Prepare the service tools, clean cloth, containers to catch grease and oil, etc.
- Prepare a container and cloth to prevent scattering of engine coolant when performing work where engine coolant can be spilled. If the oil spills, wipe it off immediately to prevent from penetrating into floor or flowing out for environmental protection.
- Vehicle components are extremely hot immediately after driving. Be wary of receiving burns from heated parts.
- When performing a repair, identify the cause of trouble and avoid unnecessary removal, disassembly and replacement.
- Before disconnecting connectors of sensors or units, be sure to disconnect the ground cable from battery.
- Always use the jack-up point when the shop jacks or rigid racks are used to support the vehicle.
- Remove contamination including dirt and corrosion before removal, installation, disassembly or assembly.
- Keep the removed parts in order and protect them from dust and dirt.
- All removed parts, if to be reused, should be reinstalled in the original positions with attention to the correct directions, etc.
- Bolts, nuts and washers should be replaced with new parts as required.
- Be sure to tighten the fasteners including bolts and nuts to the specified torque.
- Follow all government and local regulations concerning disposal of refuse when disposing engine coolant.

General Description

COOLING

D: PREPARATION TOOL

1. SPECIAL TOOL

ILLUSTRATION	TOOL NUMBER	DESCRIPTION	REMARKS
 <p>ST18355AA000</p>	18355AA000	PULLEY WRENCH	Used for removing and installing water pump pulley.
 <p>ST18334AA030</p>	18334AA030	PULLEY WRENCH PIN SET	Used for removing and installing water pump pulley.
 <p>ST1B022XU0</p>	1B022XU0	SUBARU SELECT MONITOR III KIT	Used for troubleshooting the electrical system.

2. GENERAL TOOL

TOOL NAME	REMARKS
Circuit tester	Used for measuring resistance and voltage.
Radiator cap tester	Used for checking radiator and radiator cap.