

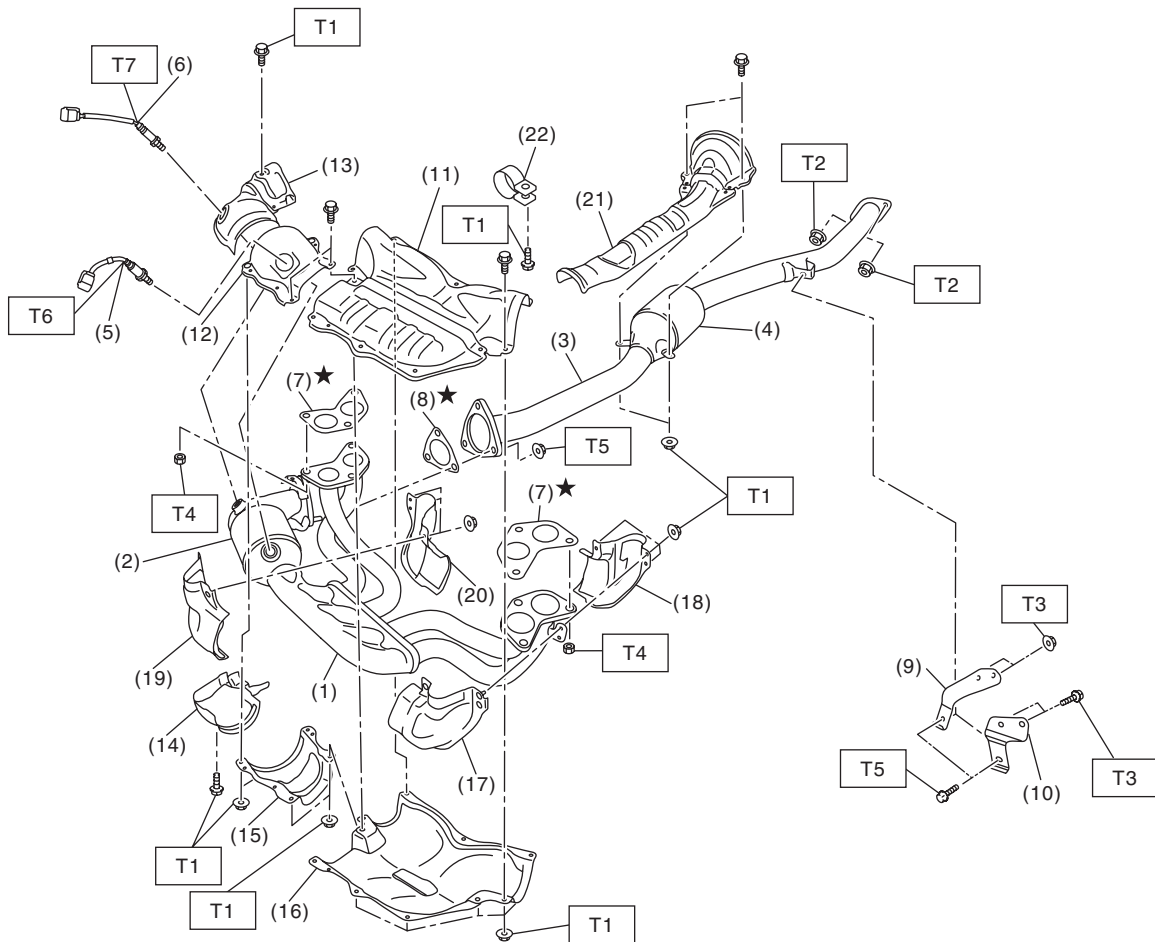
General Description

EXHAUST

1. General Description

A: COMPONENT

1. FRONT EXHAUST PIPE AND CENTER EXHAUST PIPE



EX-02962

General Description

EXHAUST

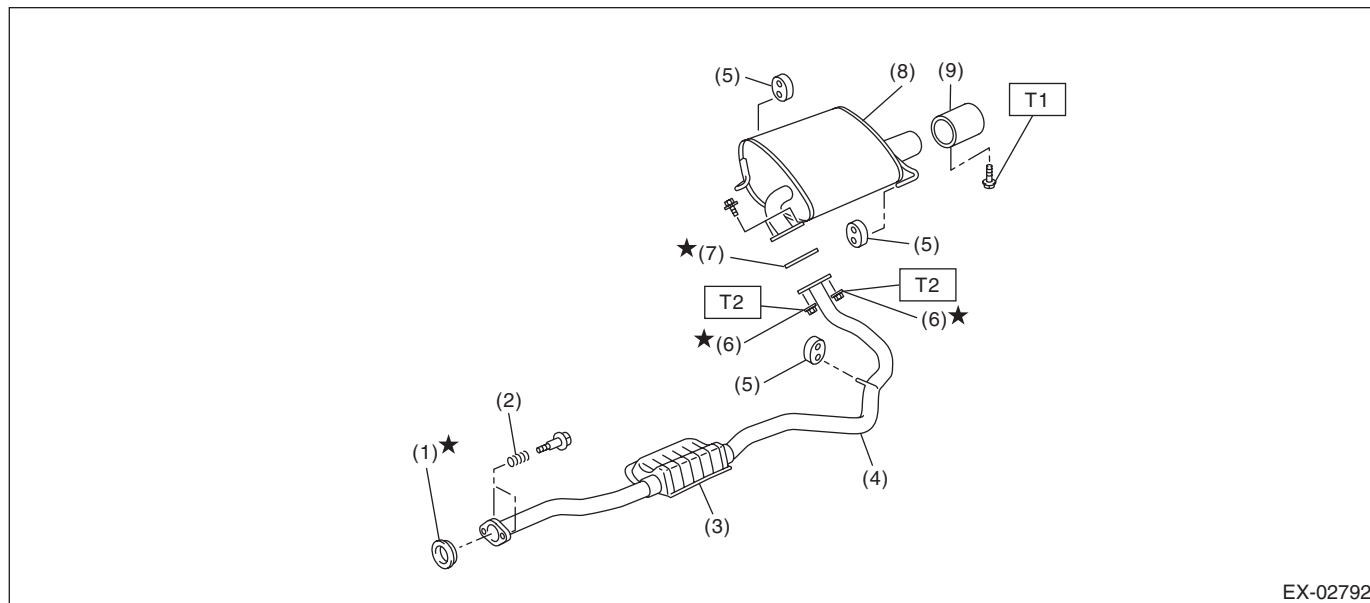
(1) Front exhaust pipe	(12) Front catalytic converter upper cover LH	(22) Band
(2) Front catalytic converter	(13) Front catalytic converter upper cover RH	
(3) Center exhaust pipe	(14) Front catalytic converter lower cover RH	<i>Tightening torque: N·m (kgf-m, ft-lb)</i>
(4) Rear catalytic converter	(15) Front catalytic converter lower cover LH	<i>T1: 13 (1.3, 9.6)</i>
(5) Front oxygen (A/F) sensor	(16) Front exhaust pipe lower cover	<i>T2: 18 (1.8, 13.3)</i>
(6) Rear oxygen sensor	(17) Front exhaust pipe side cover LH (front)	<i>T3: 23 (2.3, 17.0)</i>
(7) Gasket	(18) Front exhaust pipe side cover LH (rear)	<i>T4: 30 (3.1, 22.1)</i>
(8) Gasket	(19) Front exhaust pipe side cover RH (front)	<i>T5: 35 (3.6, 25.8)</i>
(9) Hanger bracket (MT model)	(20) Front exhaust pipe side cover RH (rear)	<i>T6: <Ref. to FU(H4DO)-95, INSTALLATION, Front Oxygen (A/F) Sensor.></i>
(10) Hanger bracket (CVT model)	(21) Center exhaust pipe upper cover	<i>T7: <Ref. to FU(H4DO)-99, INSTALLATION, Rear Oxygen Sensor.></i>
(11) Front exhaust pipe upper cover		

General Description

EXHAUST

2. REAR EXHAUST PIPE AND MUFFLER

- 4 door model



- (1) ★ Gasket
- (2) Spring
- (3) Chamber
- (4) Rear exhaust pipe
- (5) Cushion rubber

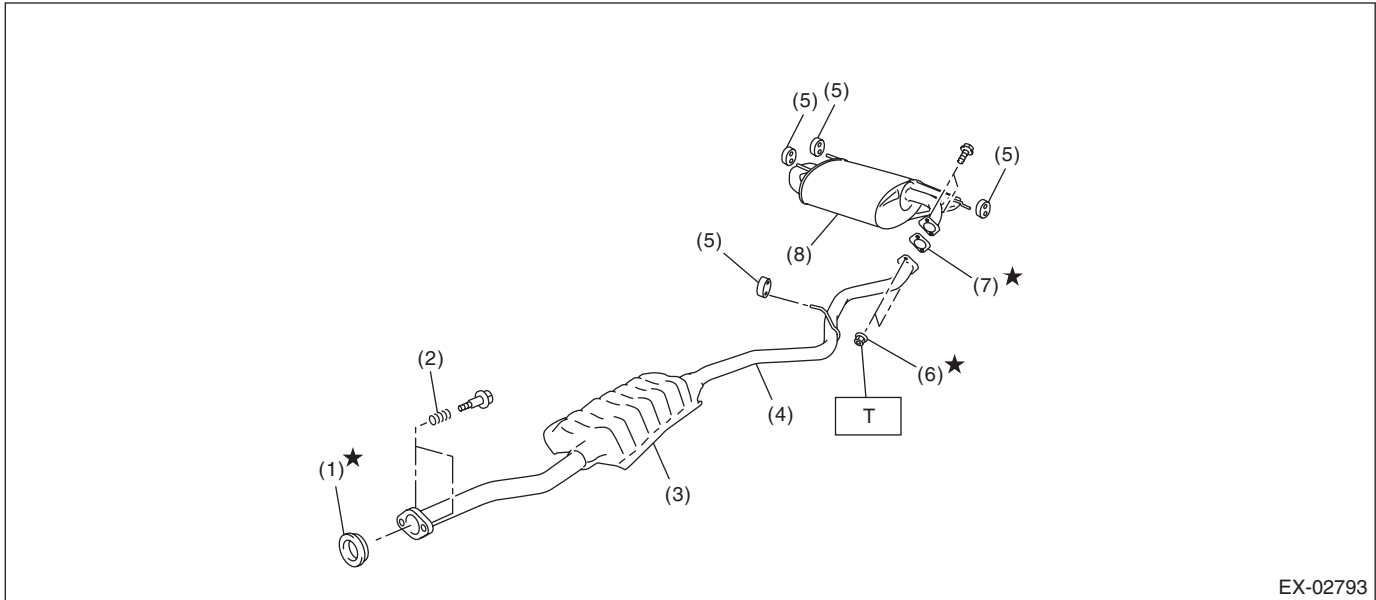
- (6) Self-locking nut
- (7) ★ Gasket
- (8) Muffler
- (9) Muffler cutter (models with muffler cutter)

Tightening torque: N·m (kgf-m, ft-lb)

T1: 7.5 (0.8, 5.5)

T2: 48 (4.9, 35.4)

- 5 door model/XV model

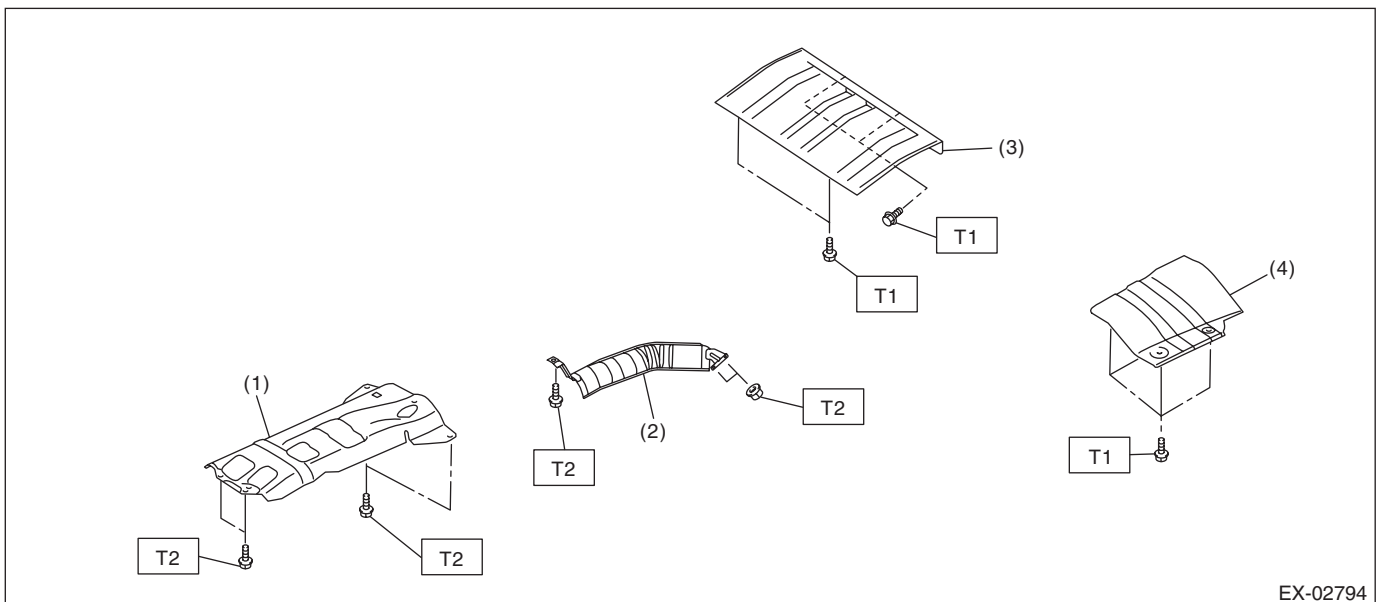


- | | |
|-----------------------|----------------------|
| (1) Gasket | (5) Cushion rubber |
| (2) Spring | (6) Self-locking nut |
| (3) Chamber | (7) Gasket |
| (4) Rear exhaust pipe | (8) Muffler |

Tightening torque: N·m (kgf-m, ft-lb)

T: 48 (4.9, 35.4)

3. HEAT SHIELD COVER



- | | |
|--|---------------------------------------|
| (1) Center exhaust cover | (4) Rear exhaust cover (4 door model) |
| (2) Fuel tank cover | |
| (3) Rear exhaust cover (5 door model/XV model) | |

Tightening torque: N·m (kgf-m, ft-lb)

T1: 10 (1.0, 7.4)

T2: 18 (1.8, 13.3)

General Description

EXHAUST

B: CAUTION

- Prior to starting work, pay special attention to the following:
 1. Always wear work clothes, a safety cap, protective shoes. Additionally, wear a helmet, protective goggles, etc. if necessary.
 2. Protect the vehicle using a seat cover, fender cover, etc.
 3. Prepare the service tools, clean cloth, containers to catch grease and oil, etc.
- Vehicle components are extremely hot immediately after driving. Be wary of receiving burns from heated parts.
- When performing a repair, identify the cause of trouble and avoid unnecessary removal, disassembly and replacement.
- Before disconnecting connectors of sensors or units, be sure to disconnect the ground cable from battery.
- Always use the jack-up point when the shop jacks or rigid racks are used to support the vehicle.
- Remove contamination including dirt and corrosion before removal, installation, disassembly or assembly.
- Keep the removed parts in order and protect them from dust and dirt.
- All removed parts, if to be reused, should be reinstalled in the original positions with attention to the correct directions, etc.
- Bolts, nuts and washers should be replaced with new parts as required.
- Be sure to tighten the fasteners including bolts and nuts to the specified torque.
- If any fat adheres to the exhaust pipe, wipe it off. Otherwise a fire may happen.