

General Description

FUEL INJECTION (FUEL SYSTEMS)

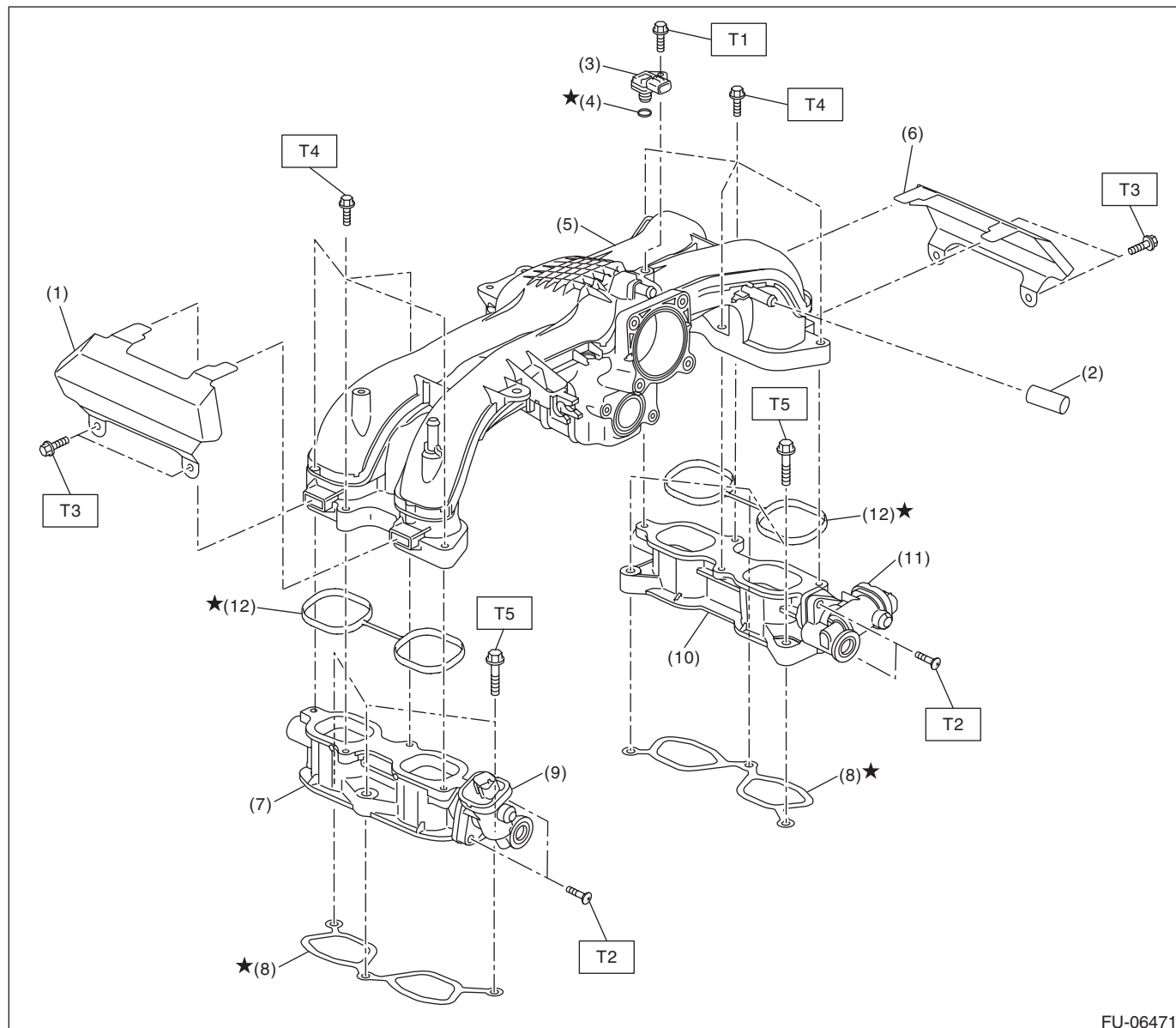
1. General Description

A: SPECIFICATION

Fuel tank	Capacity	55 ℓ (14.5 US gal, 12.1 Imp gal)
	Location	Under rear seat
Fuel pump	Type	Impeller
	Shutoff discharge pressure	677 kPa (6.9 kgf/cm ² , 98.2 psi) or less
	Discharge rate	85 ℓ (22.5 US gal, 18.7 Imp gal)/h or more [12 V at 300 kPa (3.06 kgf/cm ² , 43.5 psi)]
Fuel filter		In-tank type

B: COMPONENT

1. INTAKE MANIFOLD 1



- | | |
|---------------------------------------|---|
| (1) Intake manifold protector LH | (7) Tumble generator valve LH |
| (2) Cap | (8) Gasket |
| (3) Manifold absolute pressure sensor | (9) Tumble generator valve actuator LH |
| (4) O-ring | (10) Tumble generator valve RH |
| (5) Intake manifold | (11) Tumble generator valve actuator RH |
| (6) Intake manifold protector RH | (12) Gasket |

Tightening torque: N·m (kgf-m, ft-lb)

T1: 3.4 (0.3, 2.5)

T2: 6 (0.6, 4.4)

T3: 6.4 (0.7, 4.7)

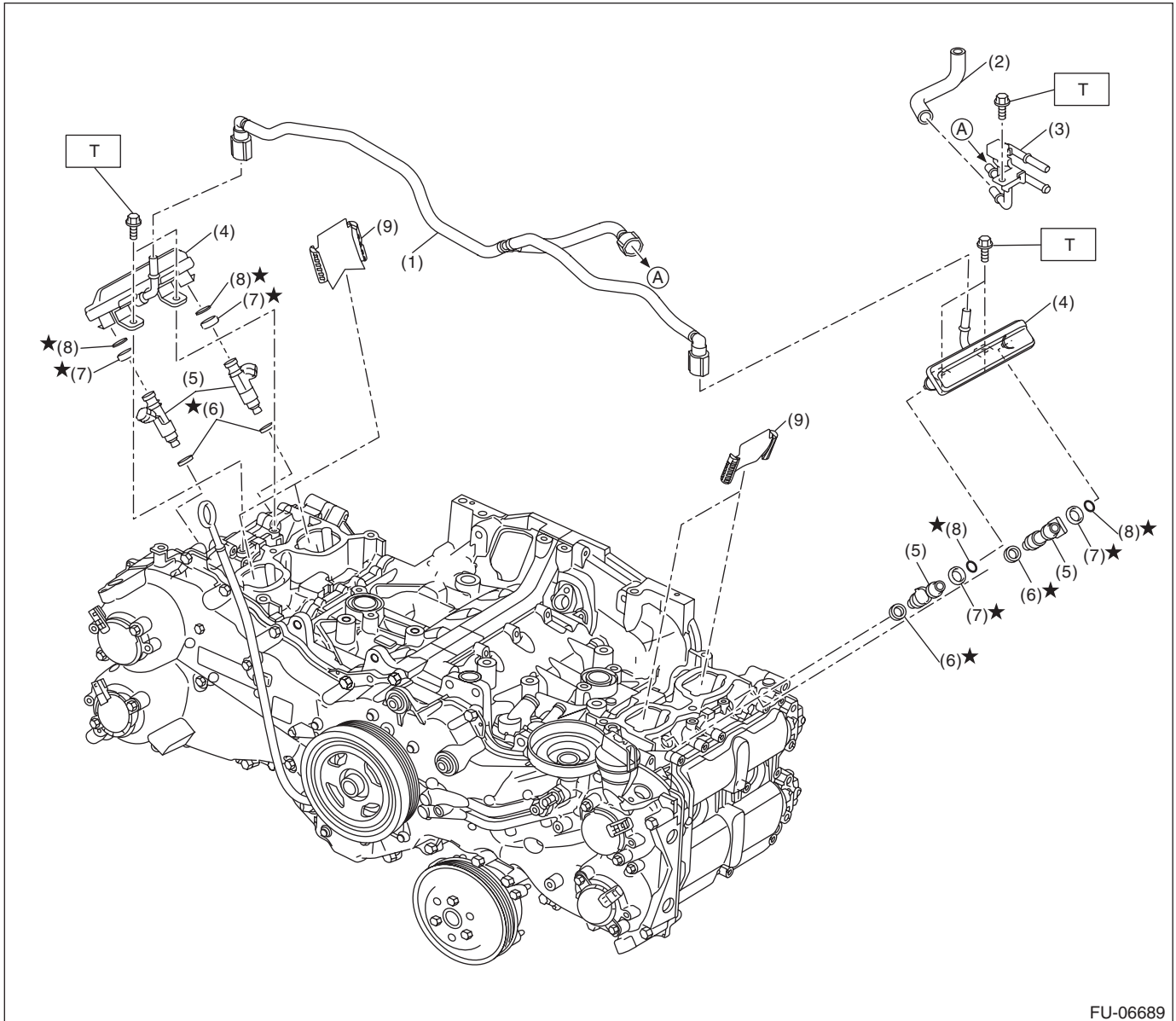
T4: 8.3 (0.8, 6.1)

T5: 25 (2.5, 18.4)

General Description

FUEL INJECTION (FUEL SYSTEMS)

2. INTAKE MANIFOLD 2



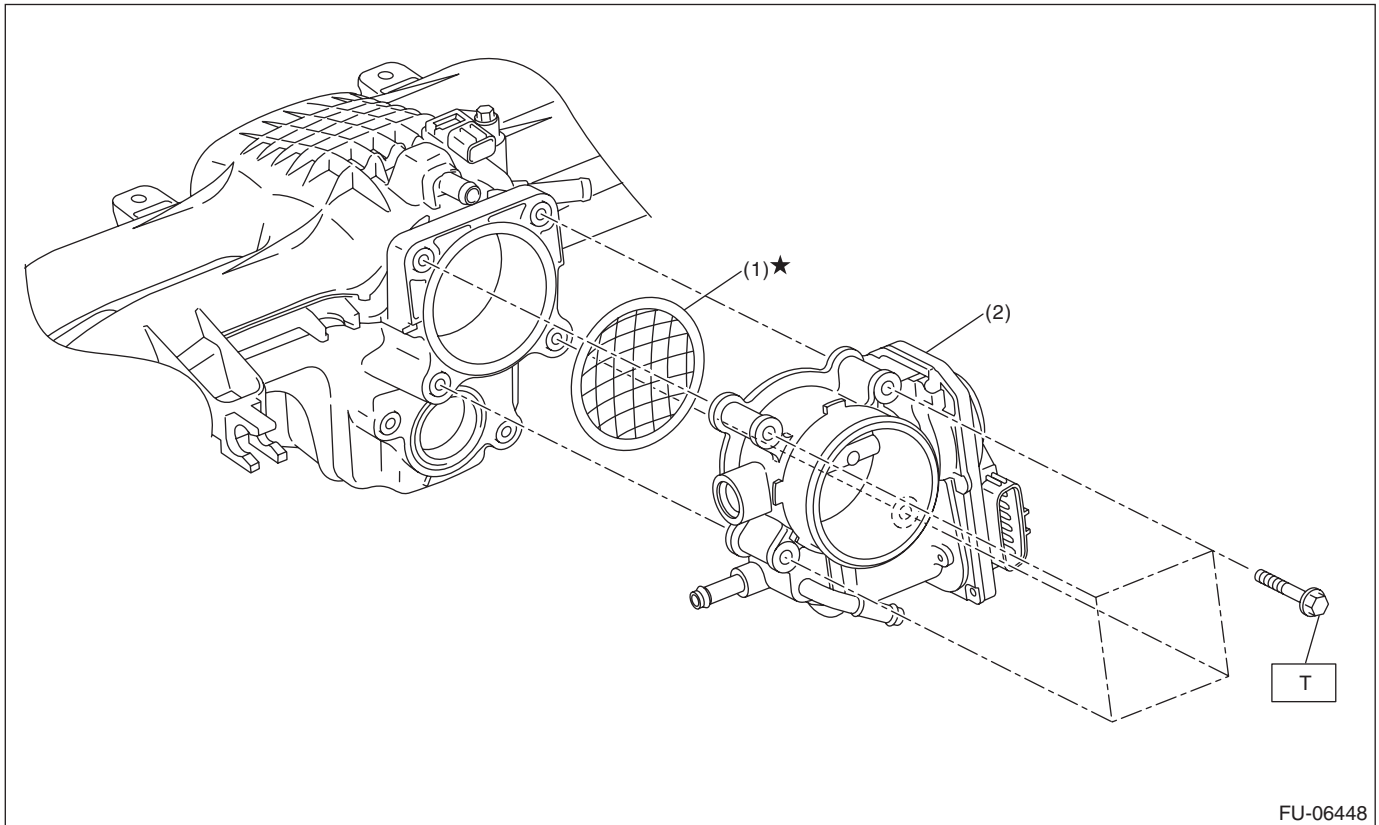
FU-06689

- | | |
|------------------------|-------------------------|
| (1) Fuel delivery pipe | (6) Seal ring |
| (2) Vacuum hose | (7) Rubber |
| (3) Fuel pipe A | (8) O-ring |
| (4) Fuel pipe B | (9) Cylinder head plate |
| (5) Fuel injector | |

Tightening torque: N·m (kgf·m, ft·lb)

T: 6.4 (0.7, 4.7)

3. THROTTLE BODY



FU-06448

(1) Gasket

(2) Throttle body

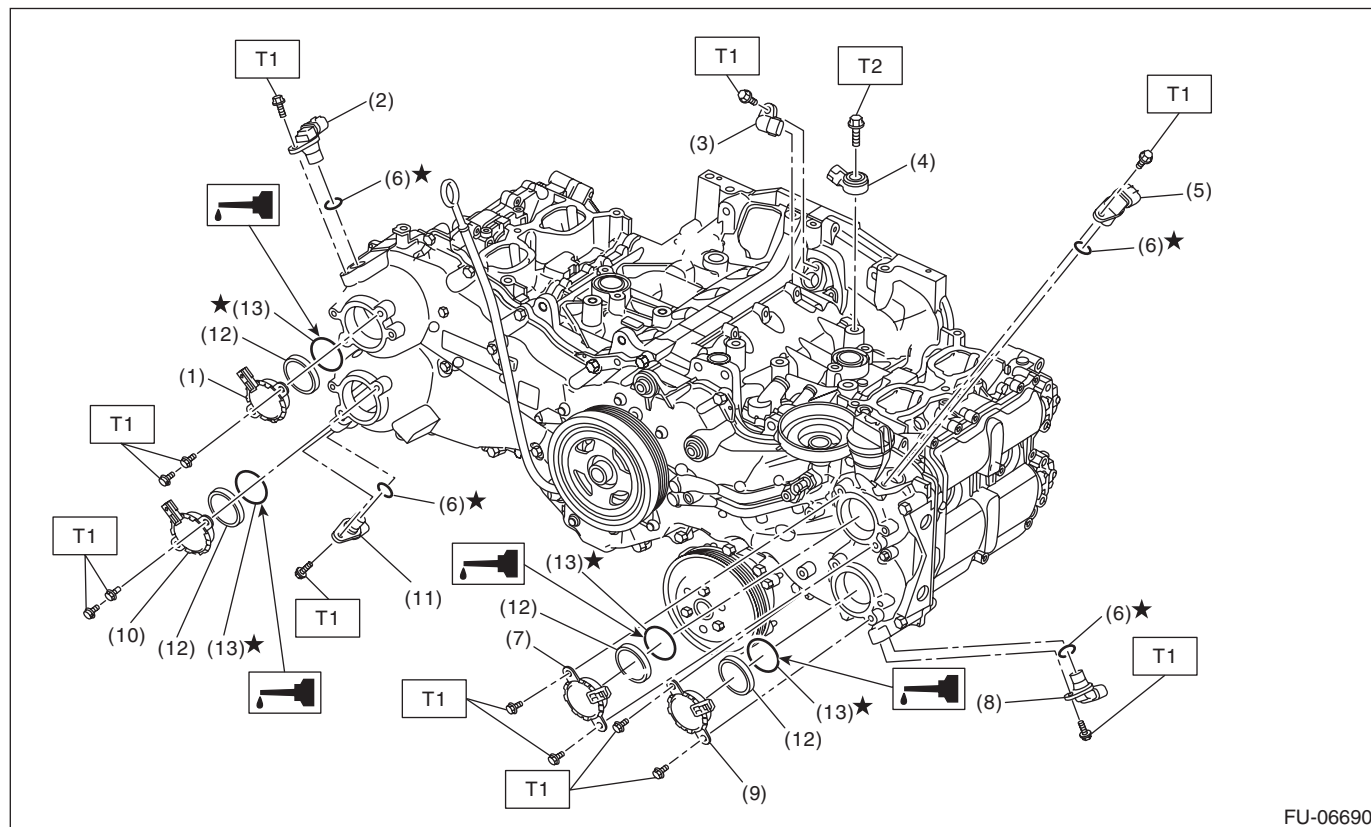
Tightening torque: N·m (kgf-m, ft-lb)

T: 8 (0.8, 5.9)

General Description

FUEL INJECTION (FUEL SYSTEMS)

4. CRANKSHAFT POSITION, CAMSHAFT POSITION AND KNOCK SENSORS



FU-06690

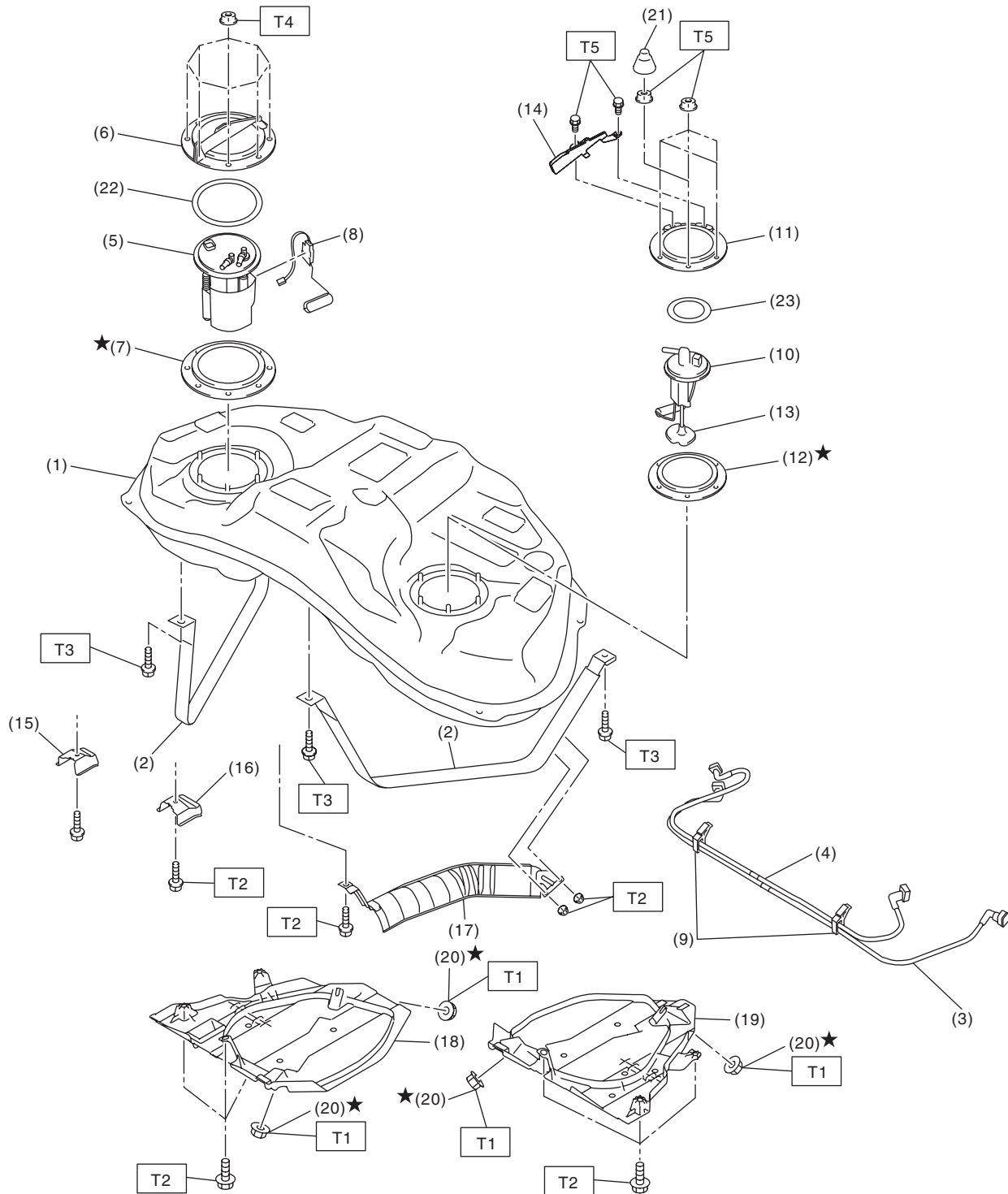
- | | | |
|--|--|-------------|
| (1) Intake oil control solenoid RH | (7) Intake oil control solenoid LH | (13) O-ring |
| (2) Intake camshaft position sensor RH | (8) Exhaust camshaft position sensor LH | |
| (3) Crankshaft position sensor | (9) Exhaust oil control solenoid LH | |
| (4) Knock sensor | (10) Exhaust oil control solenoid RH | |
| (5) Intake camshaft position sensor LH | (11) Exhaust camshaft position sensor RH | |
| (6) O-ring | (12) Back-up ring | |

Tightening torque: N·m (kgf-m, ft-lb)

T1: 6.4 (0.7, 4.7)

T2: 24 (2.4, 17.7)

5. FUEL TANK



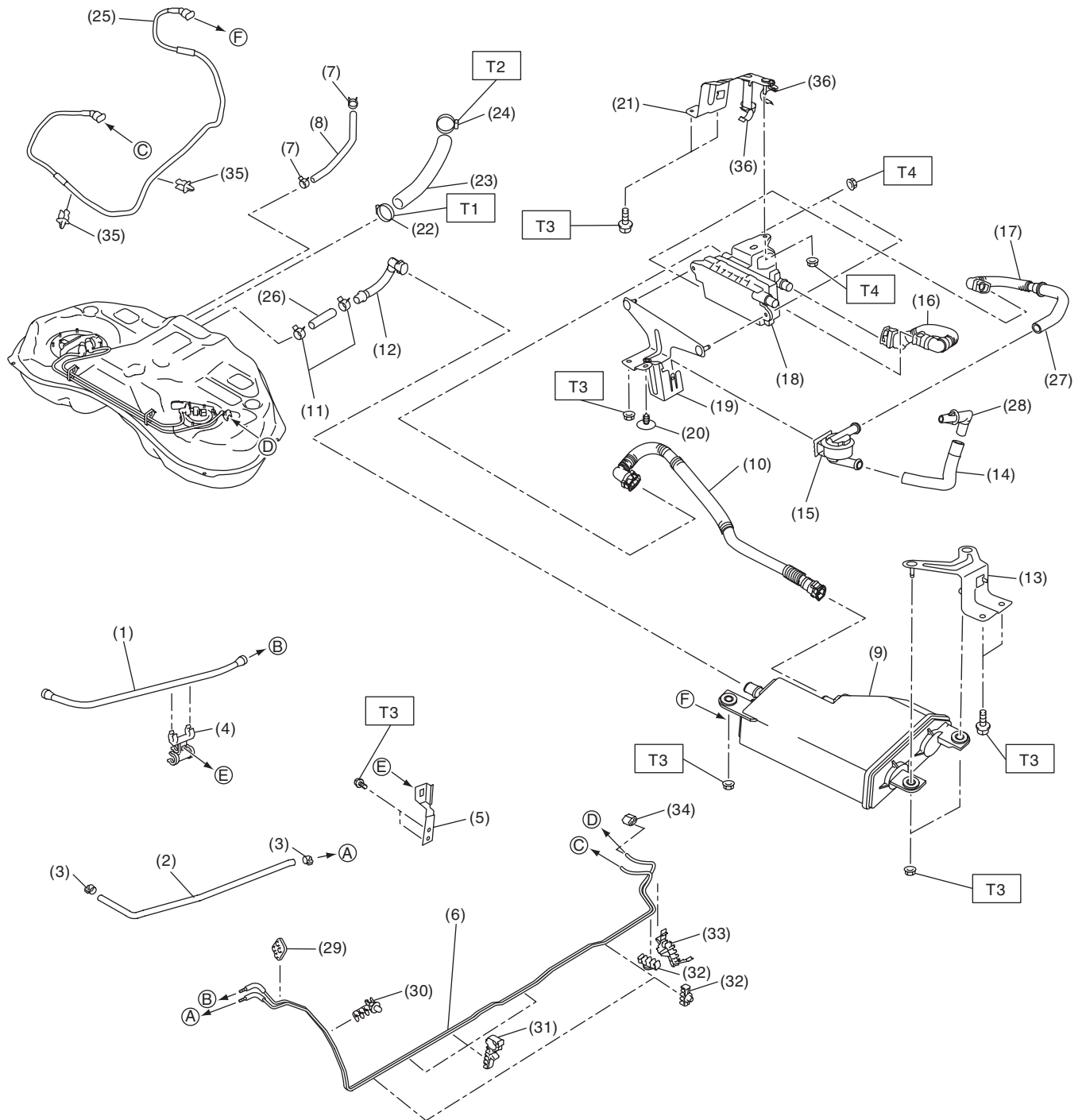
FU-07967

General Description

FUEL INJECTION (FUEL SYSTEMS)

(1) Fuel tank	(11) Fuel sub level sensor upper plate	(21) Rubber cap
(2) Fuel tank band	(12) Fuel sub level sensor gasket	(22) Fuel pump upper plate cushion
(3) Delivery tube	(13) Fuel sub level sensor filter	(23) Fuel sub level sensor upper plate cushion
(4) Jet pump tube	(14) Fuel sub level sensor protector	
(5) Fuel pump ASSY	(15) Stopper RH	<i>Tightening torque:N·m (kgf-m, ft-lb)</i>
(6) Fuel pump upper plate	(16) Stopper LH	<i>T1: 9 (0.9, 6.6)</i>
(7) Fuel pump gasket	(17) Heat shield cover	<i>T2: 18 (1.8, 13.3)</i>
(8) Fuel level sensor	(18) Fuel tank protector RH	<i>T3: <Ref. to FU(H4DO)-120, INSTALLATION, Fuel Tank.></i>
(9) Tube clamp	(19) Fuel tank protector LH	<i>T4: <Ref. to FU(H4DO)-148, INSTALLATION, Fuel Pump.></i>
(10) Fuel sub level sensor	(20) Self-locking nut	<i>T5: <Ref. to FU(H4DO)-156, INSTALLATION, Fuel Sub Level Sensor.></i>

6. FUEL LINE



FU-06397

General Description

FUEL INJECTION (FUEL SYSTEMS)

(1) Fuel delivery hose	(16) Drain tube B	(31) Pipe clamp
(2) Evaporation hose	(17) Drain tube C	(32) Pipe clamp
(3) Clip	(18) Leak check valve ASSY	(33) Pipe clamp
(4) Hose clamp	(19) Leak check valve bracket A	(34) Fuel pipe rear grommet
(5) Hose clamp bracket	(20) Clip	(35) Pipe clamp
(6) Fuel pipe ASSY	(21) Leak check valve bracket B	(36) Tube clamp
(7) Clip	(22) Clamp	
(8) Evaporation hose	(23) Fuel filler hose	
(9) Canister	(24) Clamp	
(10) Drain tube A	(25) Purge pipe	
(11) Clip	(26) Vent hose	
(12) Vent tube	(27) Drain hose	
(13) Canister bracket	(28) Connector	
(14) Intake hose	(29) Fuel pipe front grommet	
(15) Drain separator	(30) Pipe clamp	

Tightening torque:N·m (kgf-m, ft-lb)

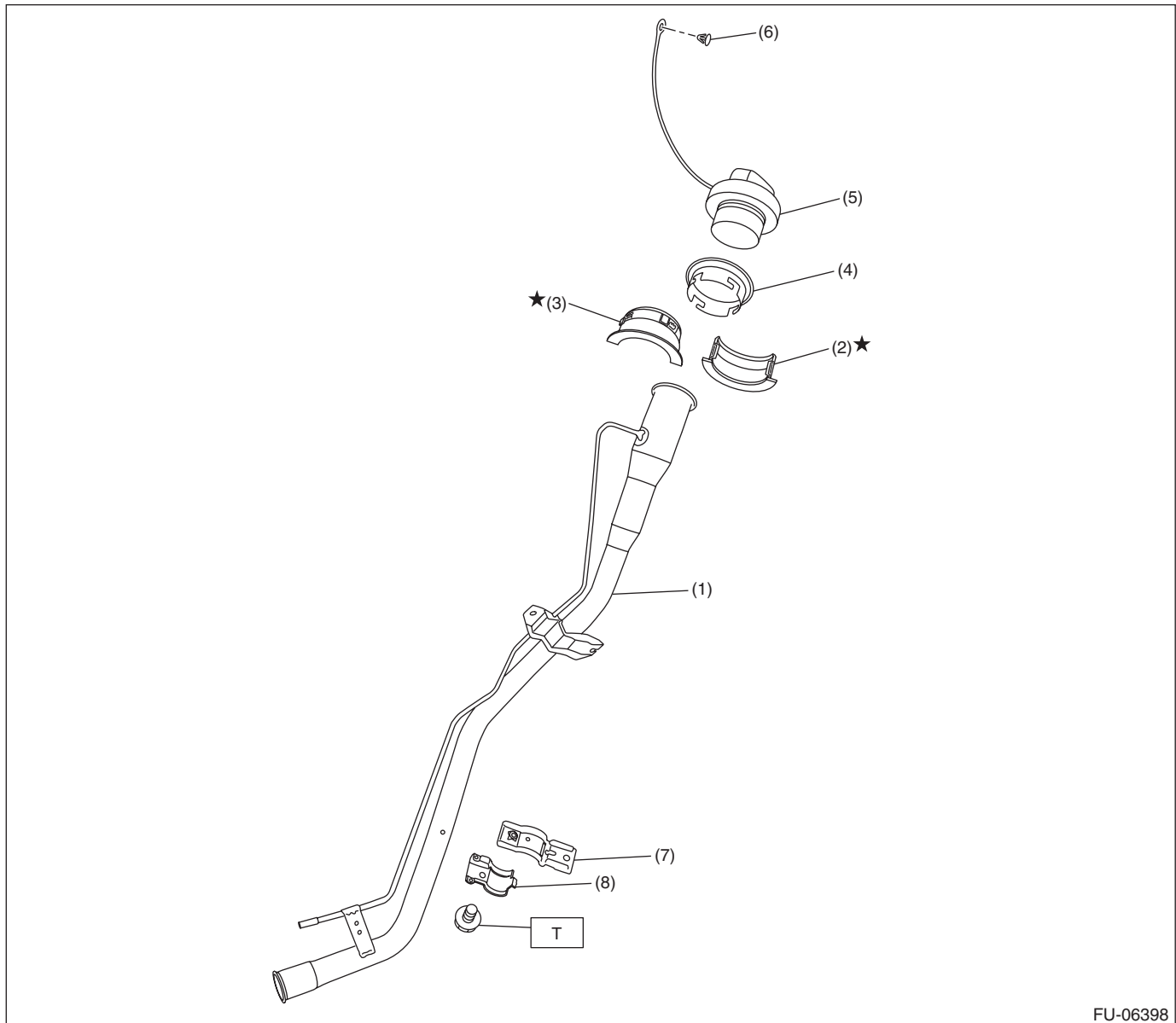
T1: 2 (0.2, 1.5)

T2: 2.5 (0.3, 1.8)

T3: 7.5 (0.8, 5.5)

T4: 18 (1.8, 13.3)

7. FUEL FILLER PIPE



FU-06398

- | | |
|--------------------------------|---------------------|
| (1) Fuel filler pipe ASSY | (5) Fuel filler cap |
| (2) Neck holder A | (6) Clip |
| (3) Neck holder B | (7) Upper bracket |
| (4) Fuel filler pipe protector | (8) Lower bracket |

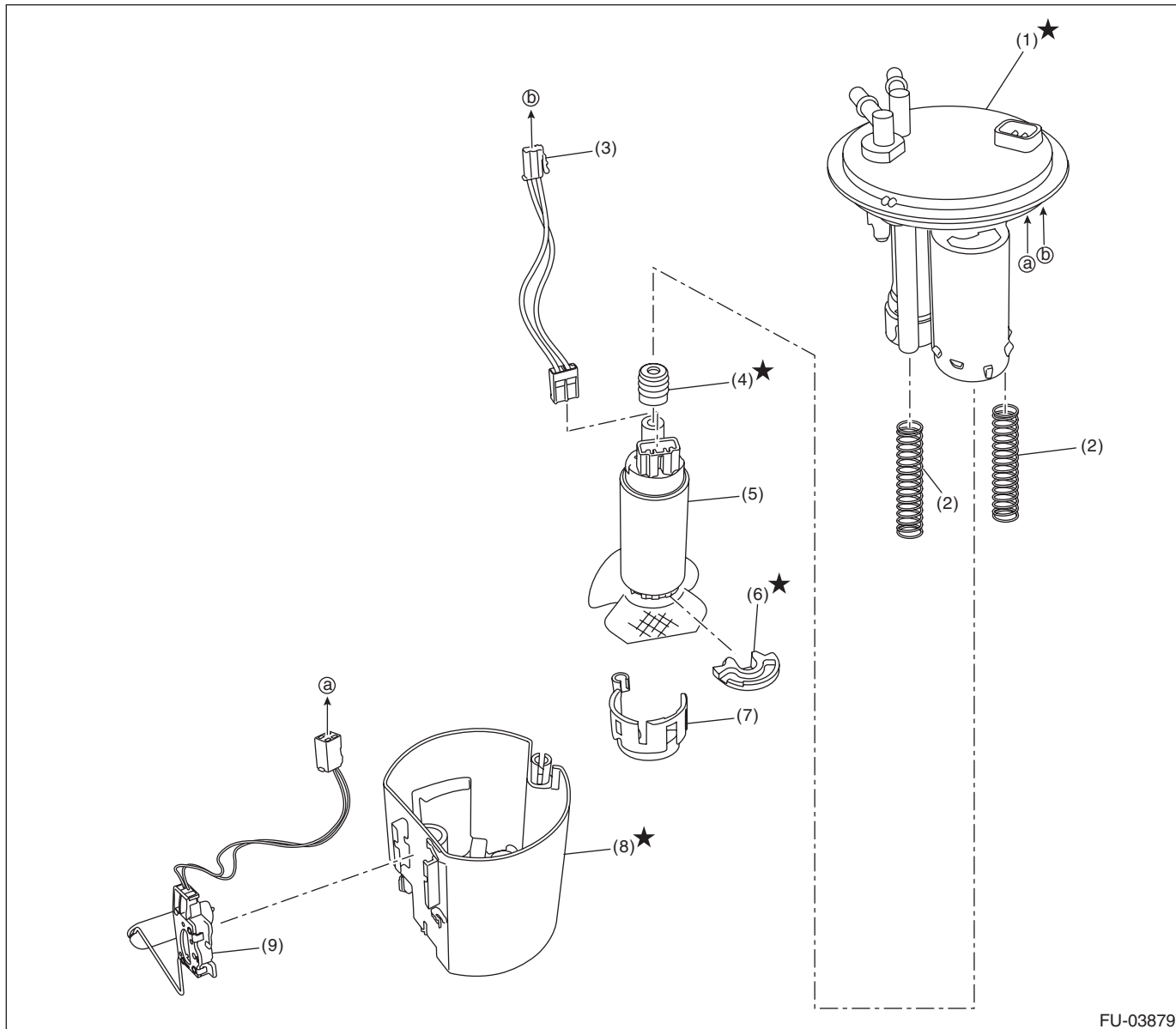
Tightening torque: N·m (kgf-m, ft-lb)

T: 7.35 (0.7, 5.4)

General Description

FUEL INJECTION (FUEL SYSTEMS)

8. FUEL PUMP

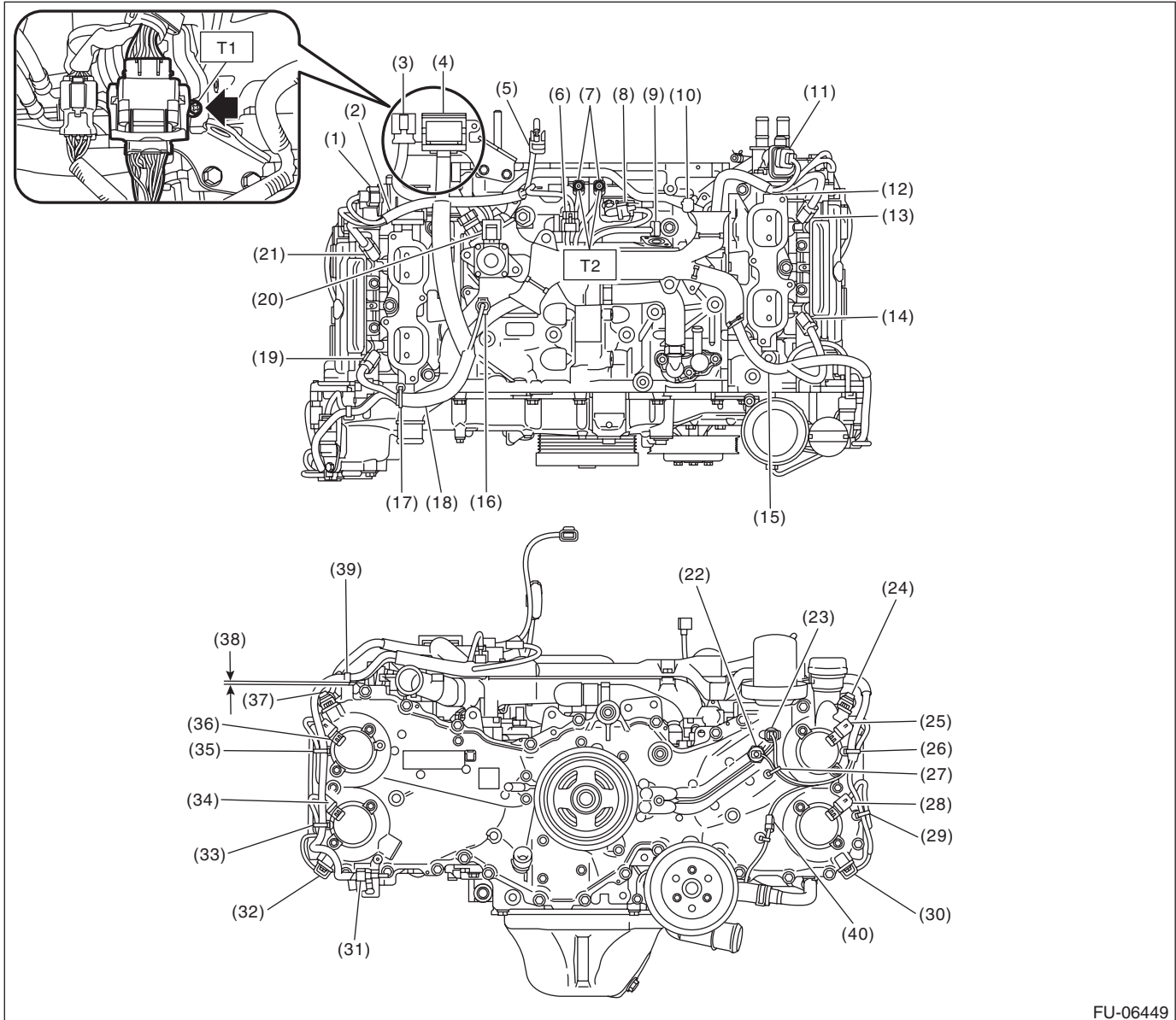


FU-03879

- | | | |
|------------------------|----------------------------|-----------------------|
| (1) Fuel filter ASSY | (4) Packing spacer | (7) Fuel pump holder |
| (2) Pump module spring | (5) Fuel pump | (8) Fuel chamber ASSY |
| (3) Fuel pump harness | (6) Support rubber cushion | (9) Fuel level sensor |

9. ENGINE HARNESS

- Structural diagram 1



FU-06449

General Description

FUEL INJECTION (FUEL SYSTEMS)

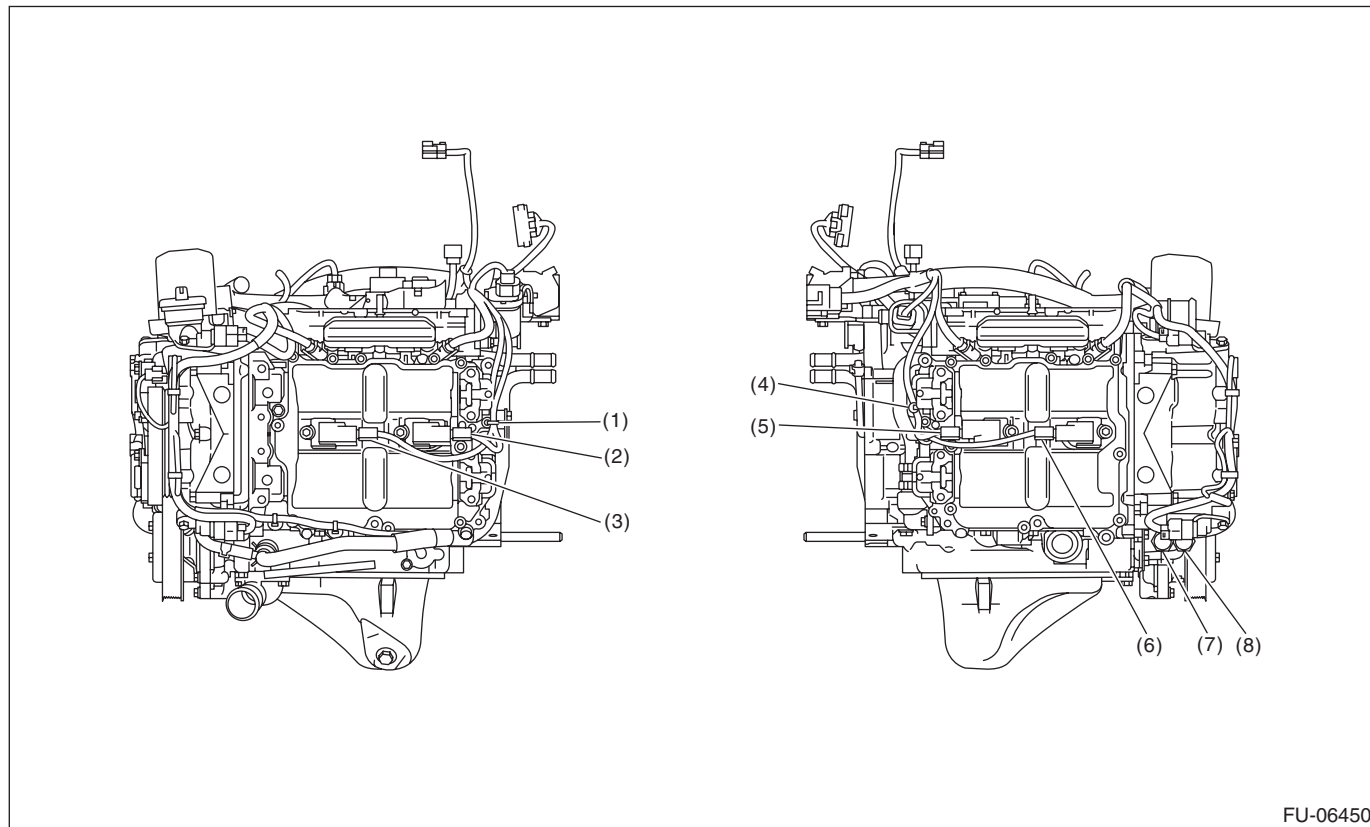
- (1) Tumble generator valve actuator RH
- (2) Be careful of pinching when installing the intake manifold.
- (3) Engine harness connector (16P)
- (4) Engine harness connector (54P)
- (5) Throttle position sensor connector
- (6) Manifold absolute pressure sensor connector
- (7) Engine ground (2 locations)
- (8) Crankshaft position sensor
- (9) Knock sensor
- (10) Purge control solenoid valve connector
- (11) Tumble generator valve actuator LH
- (12) Be careful of pinching when installing the intake manifold.
- (13) Fuel injector (#4)
- (14) Fuel injector (#2)
- (15) Be careful of pinching when installing the intake manifold and A/C bracket.
- (16) Engine coolant temperature sensor
- (17) Secure the clip to the screw hole.
- (18) Be careful of pinching when installing the intake manifold.
- (19) Fuel injector (#1)
- (20) EGR valve
- (21) Fuel injector (#3)
- (22) Oil pressure switch
- (23) Engine oil temperature sensor
- (24) Intake camshaft position sensor LH
- (25) Intake oil control solenoid LH
- (26) Secure the clip to the screw hole.
- (27) Secure the clip to the screw hole.
- (28) Exhaust oil control solenoid LH
- (29) Secure the clip to the screw hole.
- (30) Exhaust camshaft position sensor LH
- (31) Secure the clip to the oval hole.
- (32) Exhaust camshaft position sensor RH
- (33) Secure the clip to the screw hole.
- (34) Exhaust oil control solenoid RH
- (35) Secure the clip to the screw hole.
- (36) Intake oil control solenoid RH
- (37) Intake camshaft position sensor RH
- (38) Maximum of 0 — 2 mm (0 — 0.079 in) gap is allowed.
- (39) Secure the clip to the screw hole.
- (40) Oil level switch connector

Tightening torque:N·m (kgf-m, ft-lb)

T1: 7.5 (0.8, 5.5)

T2: 19 (1.9, 14.0)

- Structural diagram 2



- (1) Secure the clip to the screw hole.
- (2) Ignition coil No. 4
- (3) Ignition coil No. 2
- (4) Secure the clip to the screw hole.
- (5) Ignition coil No. 3
- (6) Ignition coil No. 1
- (7) Front oxygen (A/F) sensor
- (8) Rear oxygen sensor

General Description

FUEL INJECTION (FUEL SYSTEMS)

C: CAUTION

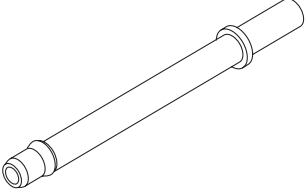
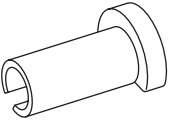
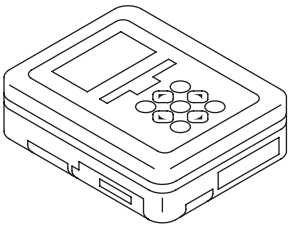
- Prior to starting work, pay special attention to the following:
 1. Always wear work clothes, a safety cap, protective shoes. Additionally, wear a helmet, protective goggles, etc. if necessary.
 2. Protect the vehicle using a seat cover, fender cover, etc.
 3. Prepare the service tools, clean cloth, containers to catch grease and oil, etc.
- Place “NO OPEN FLAMES” signs near the working area.
- Prepare a container and cloth to prevent scattering of fuels when performing work where fuels can be spilled. If the oil spills, wipe it off immediately to prevent from penetrating into floor or flowing out for environmental protection.
- Vehicle components are extremely hot immediately after driving. Be wary of receiving burns from heated parts.
- When performing a repair, identify the cause of trouble and avoid unnecessary removal, disassembly and replacement.
- Before disconnecting connectors of sensors or units, be sure to disconnect the ground cable from battery.
- Always use the jack-up point when the shop jacks or rigid racks are used to support the vehicle.
- Remove contamination including dirt and corrosion before removal, installation, disassembly or assembly.
- Keep the removed parts in order and protect them from dust and dirt.
- All removed parts, if to be reused, should be reinstalled in the original positions with attention to the correct directions, etc.
- Bolts, nuts and washers should be replaced with new parts as required.
- Follow all government and local regulations concerning disposal of refuse when disposing fuel.

General Description

FUEL INJECTION (FUEL SYSTEMS)

D: PREPARATION TOOL

1. SPECIAL TOOL

ILLUSTRATION	TOOL NUMBER	DESCRIPTION	REMARKS
 ST18471AA000	18471AA000	FUEL PIPE ADAPTER	Used for draining fuel.
 ST42099AE000	42099AE000	QUICK CONNECTOR RELEASE	Used for removing the quick connector.
 ST1B022XU0	1B022XU0	SUBARU SELECT MONITOR III KIT	Used for draining fuel and each inspection.

2. GENERAL TOOL

TOOL NAME	REMARKS
Circuit tester	Used for measuring resistance and voltage.
Oscilloscope	Used for inspecting the waveform of each sensor.