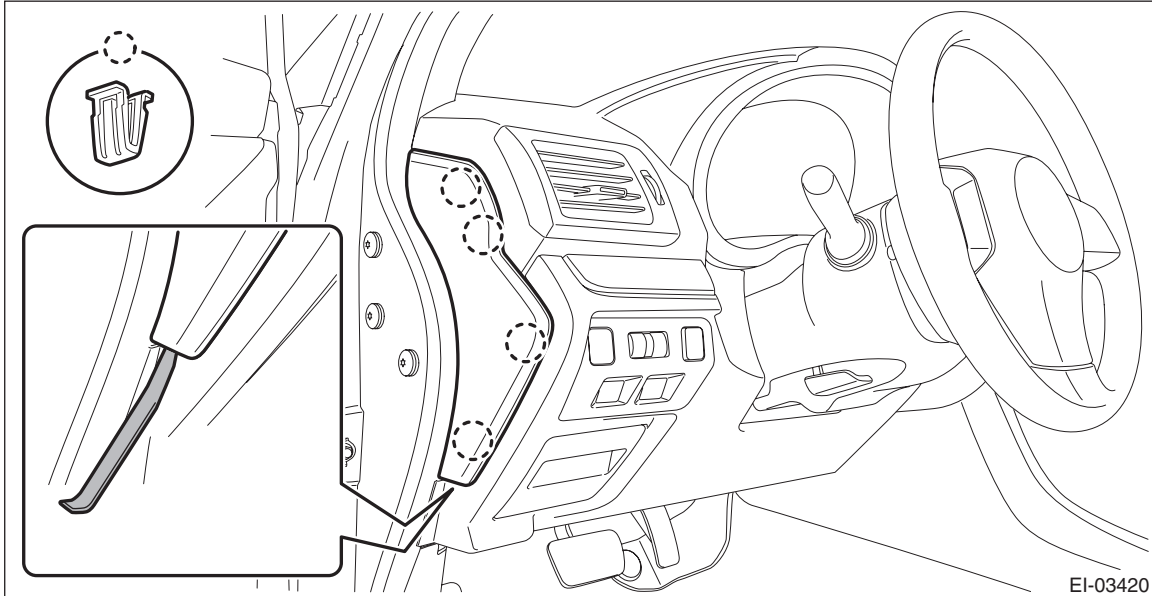


## 15.Stop Light Switch

### A: REMOVAL

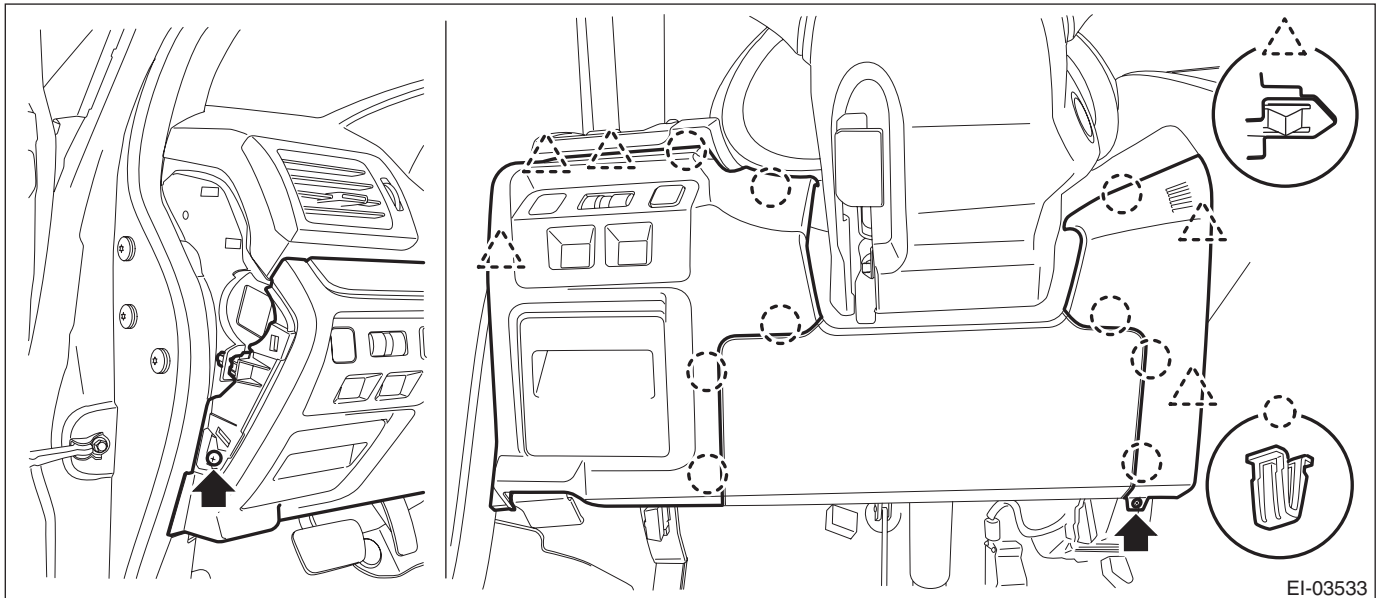
- 1) Disconnect the ground cable from battery and wait for at least 60 seconds before starting work.
- 2) Remove the cover assembly - instrument panel LWR driver.
  - (1) Remove the clips, and remove the cover - instrument panel side LH.



#### NOTE:

Using a plastic remover, open the cover - instrument panel side LH.

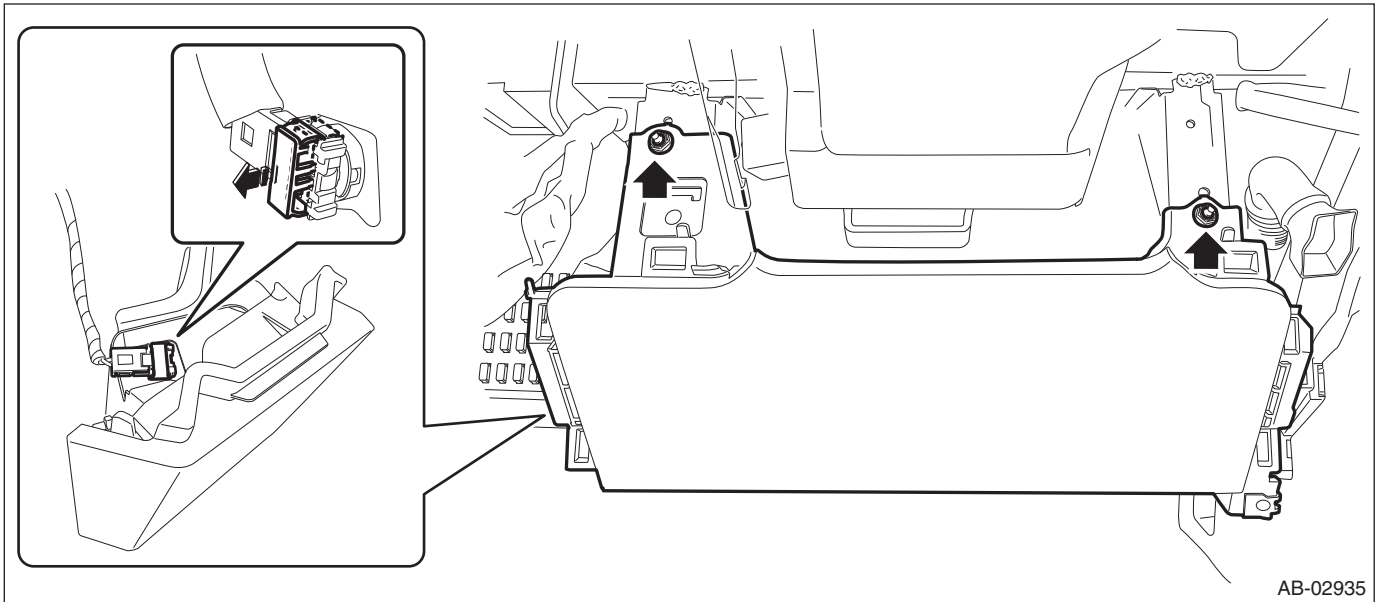
- (2) Remove the screws and release the clips and claws.
- (3) Disconnect the harness connectors, and remove the cover assembly - instrument panel LWR driver INN and OUT.



# Stop Light Switch

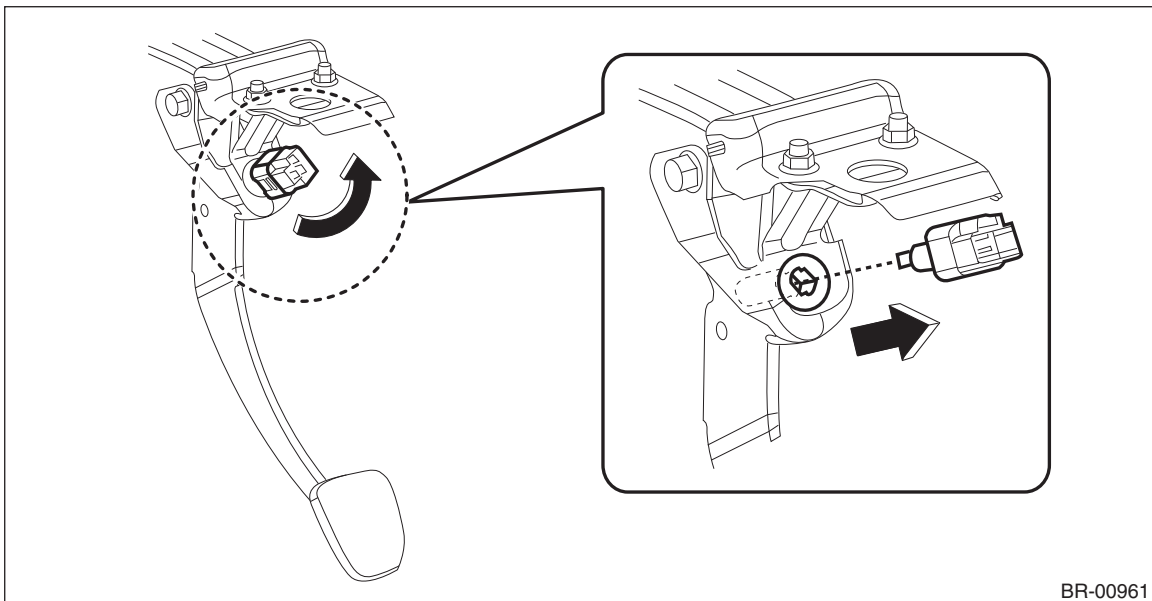
## BRAKE

3) Remove the nuts to remove the knee airbag module and disconnect the harness connector. <Ref. to AB-30, KNEE AIRBAG MODULE, PROCEDURE, Airbag Connector.>



4) Remove the switch - stop light.

- (1) Disconnect the switch - stop light connector.
- (2) Remove the switch - stop light by turning it counterclockwise.



## B: INSTALLATION

1) Install the switch - stop light.

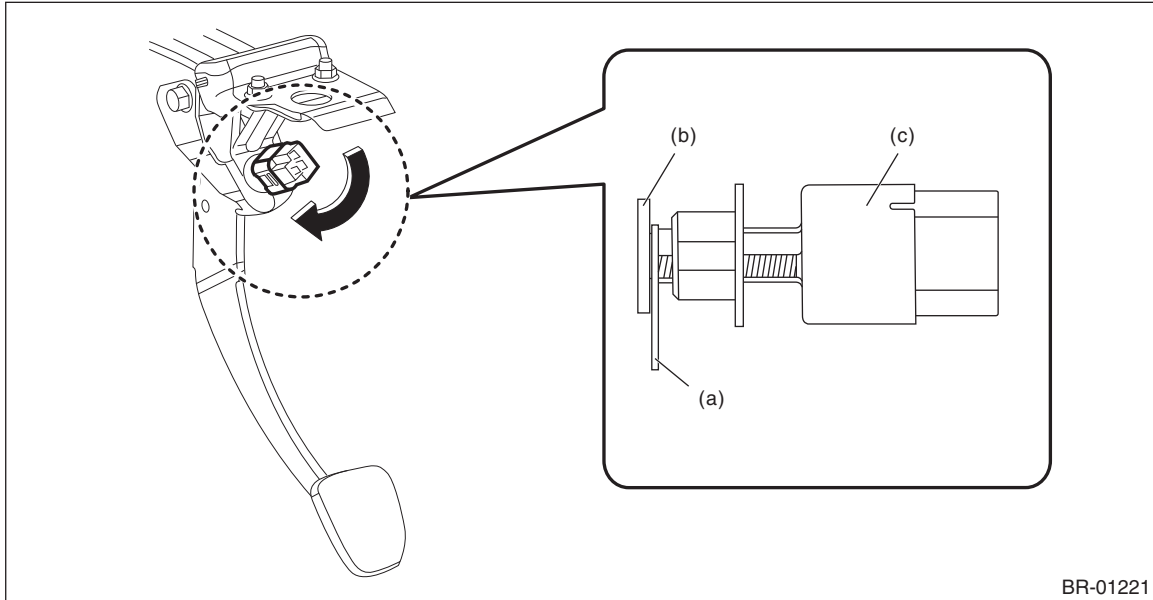
### CAUTION:

- When pushing the switch - stop light against the spacer, do not apply excessive force.
  - Tighten the switch - stop light with a turning torque of 3.0 N·m (0.31 kgf-m, 2.2 ft-lb) or less.
- (1) Prepare the spacer (a) with approx. 0.5 mm (0.020 in) in thickness.
  - (2) Align the groove of the holder - stop light switch with the cutout portion of push rod for the switch - stop light.
  - (3) While pulling up the brake pedal toward you, set the spacer (a) between the stopper (b) and the switch - stop light (c).

# Stop Light Switch

BRAKE

- (4) Insert the switch - stop light (c) and turn it clockwise by 45° to secure.

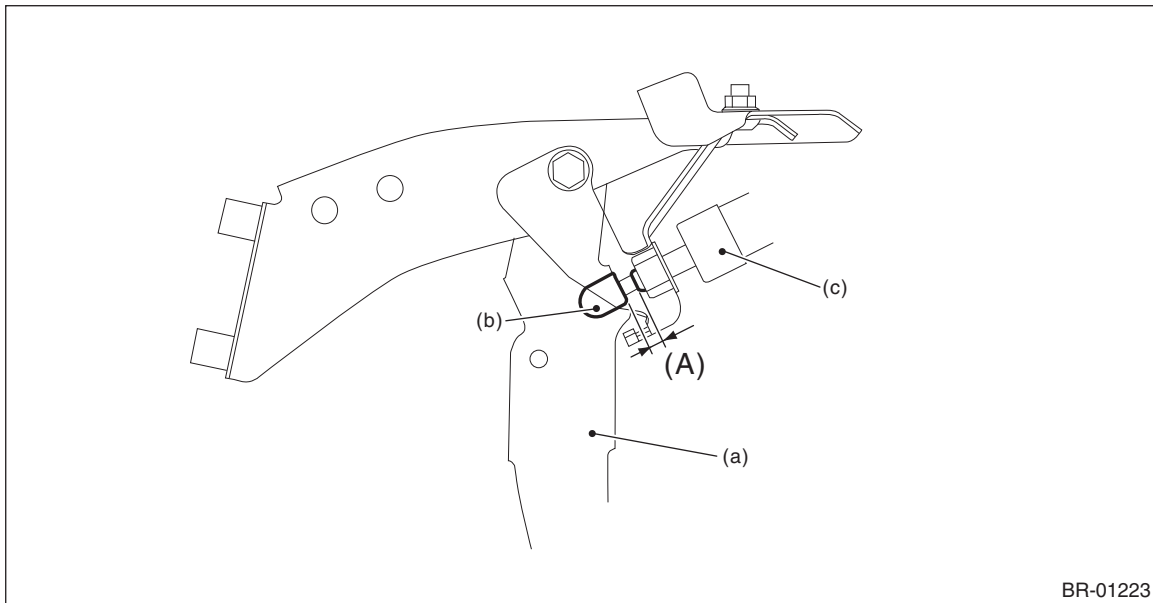


- 2) Remove the spacer (a).

- 3) Pull up the brake pedal and make sure that the clearance (A) between the switch - stop light end part and the stopper is 1.5 — 2.5 mm (0.06 — 0.1 in).

## Specification:

**Clearance (A) of the switch - stop light: 1.5 — 2.5 mm (0.06 — 0.1 in)**



(a) Brake pedal

(b) Stopper

(c) Switch - stop light

- 4) Connect the switch - stop light connector.

- 5) Install the knee airbag module and the cover assembly - instrument panel LWR driver. <Ref. to AB-43, INSTALLATION, Knee Airbag Module.>

- 6) Connect the battery ground terminal.

- 7) Check that the brake light operate properly.

## NOTE:

Operate the brake pedal by 5 mm (0.2 in) or more, and check that the stop light illuminates.

# Stop Light Switch

## BRAKE

### 8) Check the operation of switch - stop light.

- (1) Turn to IG OFF and connect the Subaru Select Monitor.
- (2) Turn to IG ON and display the data of the "Brake Switch" and "Pressure Sensor Output" according to the Subaru Select Monitor display.
- (3) Check that the switch - stop light is OFF with the brake pedal not depressed.
- (4) Quickly depress the brake pedal 5 times.
- (5) Slowly release the brake pedal depressed at the fifth time and check that the master cylinder pressure is within the standard value when the switch - stop light changes from OFF to ON.

#### Specification:

**Less than 1 Mpa (10 bar)**

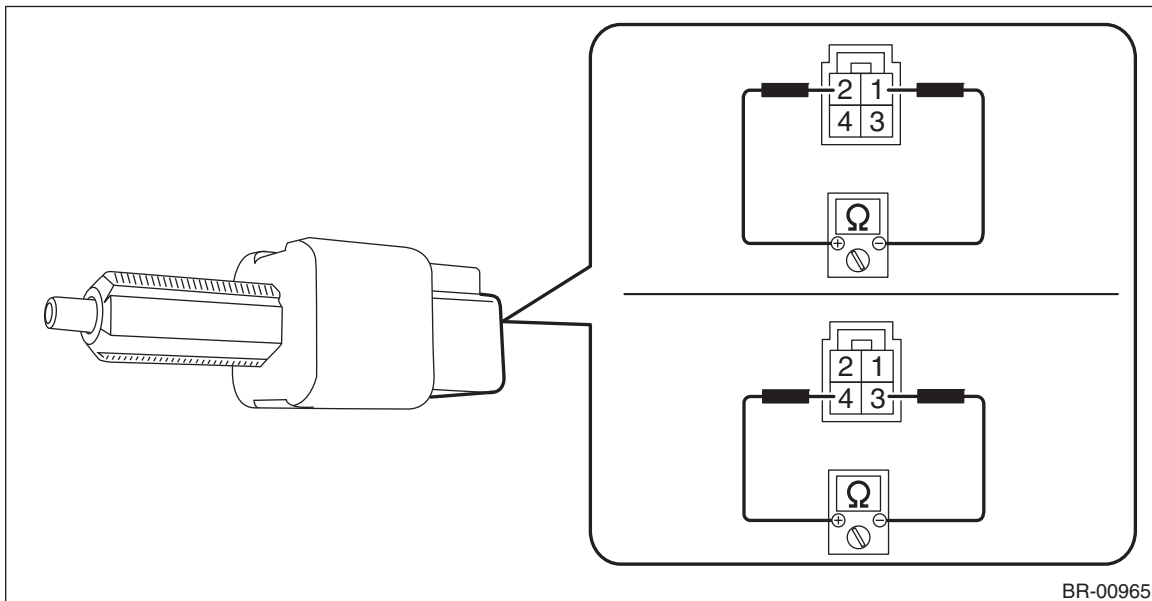
## C: INSPECTION

### 1. INSPECT THE RESISTANCE

- 1) Disconnect the switch - stop light connector.
- 2) Check the resistance between the terminals of switch - stop light.

#### Preparation tool:

**Circuit tester**



BR-00965

Terminal No.	Inspection conditions	Standard
1 — 2	When brake pedal is depressed	1 M $\Omega$ or more
	When brake pedal is released	Less than 1 $\Omega$
3 — 4	When brake pedal is depressed	Less than 1 $\Omega$
	When brake pedal is released	1 M $\Omega$ or more

- 3) Replace the switch - stop light if the inspection result is not within the standard value.