

# General Description

## WIPER AND WASHER SYSTEMS

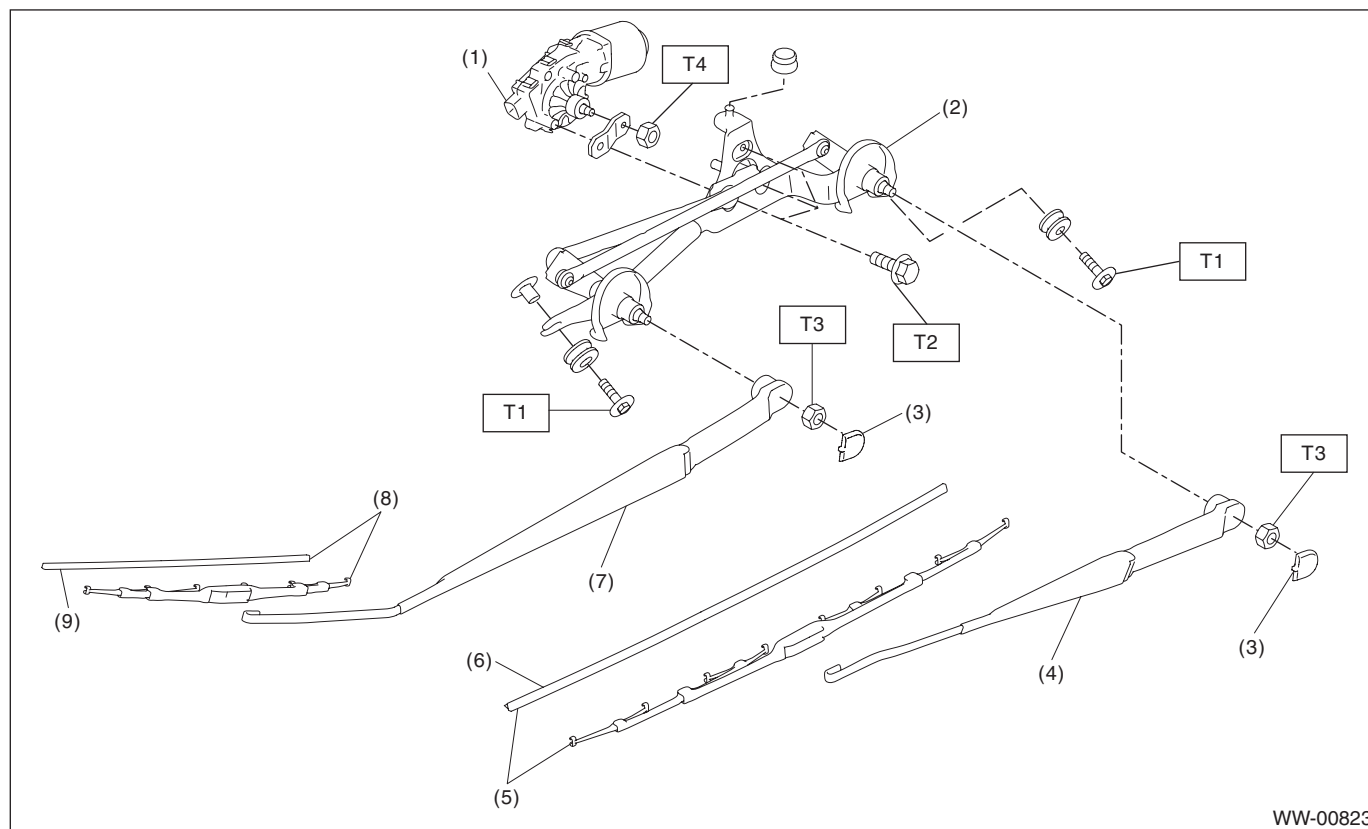
### 1. General Description

#### A: SPECIFICATION

Front wiper motor	Input	12 V — 72 W or less
Rear wiper motor	Input	12 V — 42 W or less
Front washer motor	Pump type	Centrifugal
	Input	12 V — 60 W or less
Rear washer motor	Pump type	Centrifugal
	Input	12 V — 36 W or less

#### B: COMPONENT

##### 1. FRONT WIPER



- (1) Motor ASSY - windshield wiper
- (2) Link ASSY - windshield wiper
- (3) Cover - windshield wiper arm
- (4) Arm ASSY - windshield wiper driver
- (5) Blade ASSY - windshield wiper driver

- (6) Rubber ASSY - windshield wiper driver
- (7) Arm ASSY - windshield wiper assistor
- (8) Blade ASSY - windshield wiper assistor
- (9) Rubber ASSY - windshield wiper assistor

**Tightening torque:N·m (kgf-m, ft-lb)**

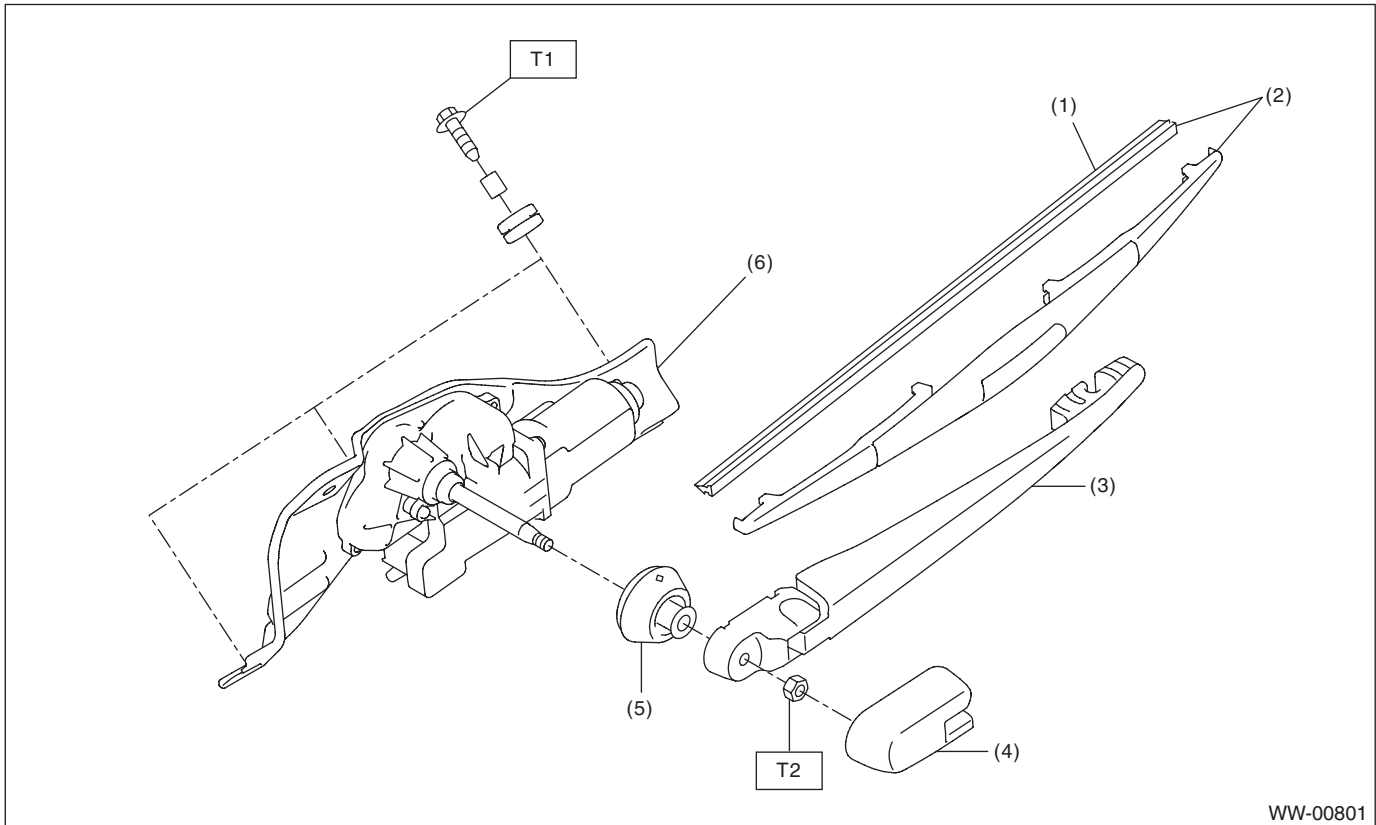
**T1: 6 (0.61, 4.4)**

**T2: 5.5 (0.56, 4.1)**

**T3: 22 (2.24, 16.2)**

**T4: <Ref. to WW-32, INSTALLATION, Front Wiper Motor and Link.>**

### 2. REAR WIPER



- |                              |                             |
|------------------------------|-----------------------------|
| (1) Rubber ASSY - rear wiper | (4) Cover - rear wiper arm  |
| (2) Blade ASSY - rear wiper  | (5) Cap - pivot wiper       |
| (3) Arm ASSY - rear wiper    | (6) Motor ASSY - rear wiper |

***Tightening torque: N·m (kgf-m, ft-lb)***

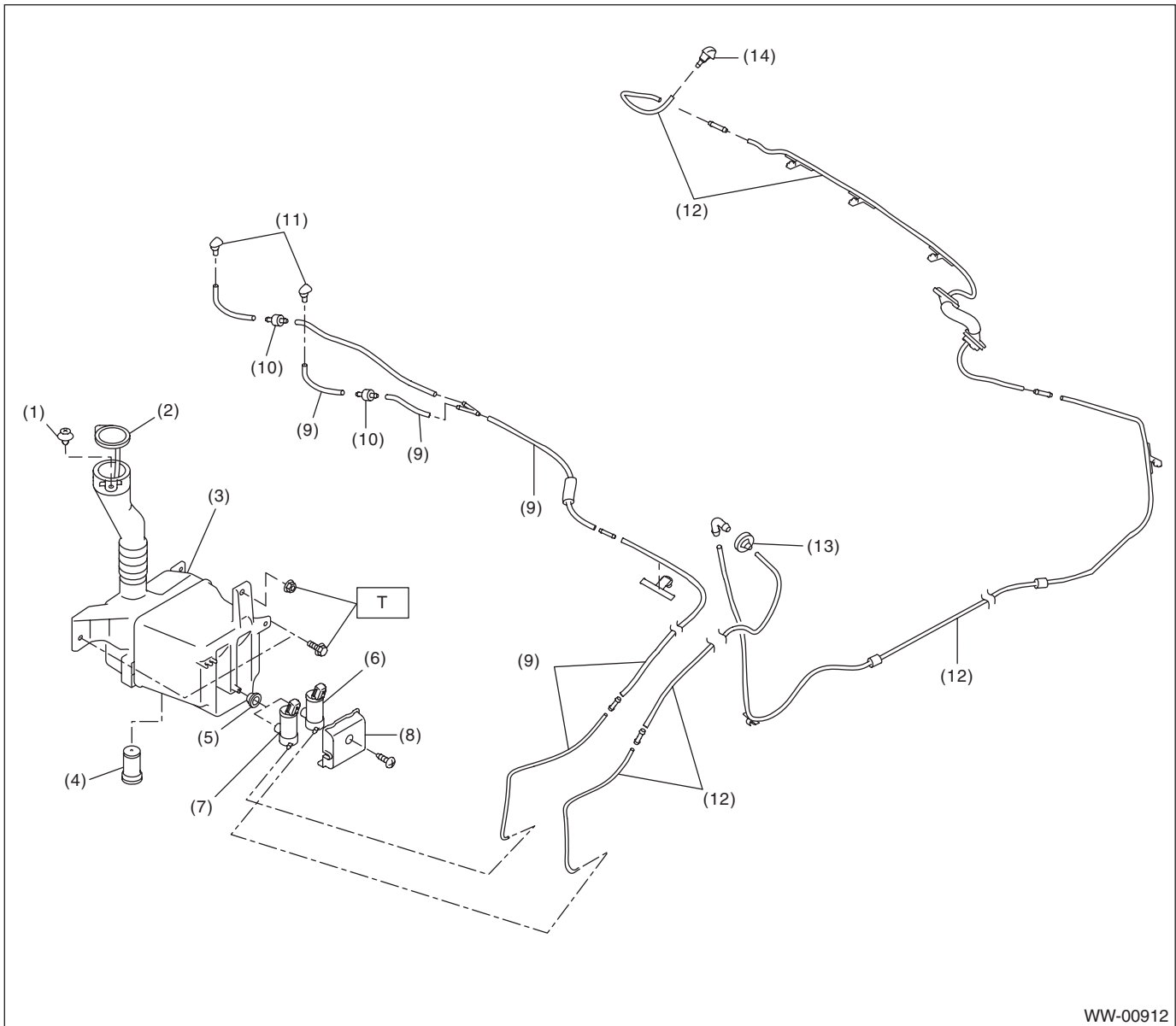
***T1: 6 (0.61, 4.4)***

***T2: 8 (0.82, 5.9)***

# General Description

## WIPER AND WASHER SYSTEMS

### 3. WASHER TANK



WW-00912

- |   |   |   |
|---|---|---|
| (1) Clip  | (7) Motor pump ASSY - washer front          | (13) Grommet - washer hose                    |
| (2) Holder - windshield washer tank                   | (8) Cover - pump                            | (14) Nozzle - rear washer (5 door model only) |
| (3) Tank - washer                                     | (9) Hose - windshield washer                |   |
| (4) Sensor - washer tank                              | (10) Valve - windshield washer              |   |
| (5) Packing - washer motor                            | (11) Nozzle - windshield washer             |   |
| (6) Motor pump ASSY - washer rear (5 door model only) | (12) Hose ASSY - rear washer (5 door model) |   |

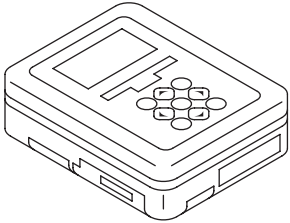
**Tightening torque: N·m (kgf·m, ft·lb)**

**T: 6 (0.61, 4.4)**

**C: CAUTION**

- Connect the connectors and hoses securely during reassembly.
- After reassembly, make sure that the each component or each function operates normally.
- Be careful with the airbag system wiring harness which passes near electrical parts and switches.
- Yellow connectors and harnesses with yellow tapes around them are the connectors and harnesses for the airbag system. Using a tester above such circuits may cause malfunction of airbag system. Follow the cautions of "AIRBAG SYSTEM" in this case. <Ref. to AB-10, CAUTION, General Description.>
- When connecting the pipe hoses, be careful not to cause bend or blockage.
- If even a small amount of silicon oil or grease enters the tank - washer and the washer fluid passages, an oil film will be formed on the glass and will cause the wiper to chatter and judder. Make sure that no oil comes into contact with the system.

**D: PREPARATION TOOL****1. SPECIAL TOOL**

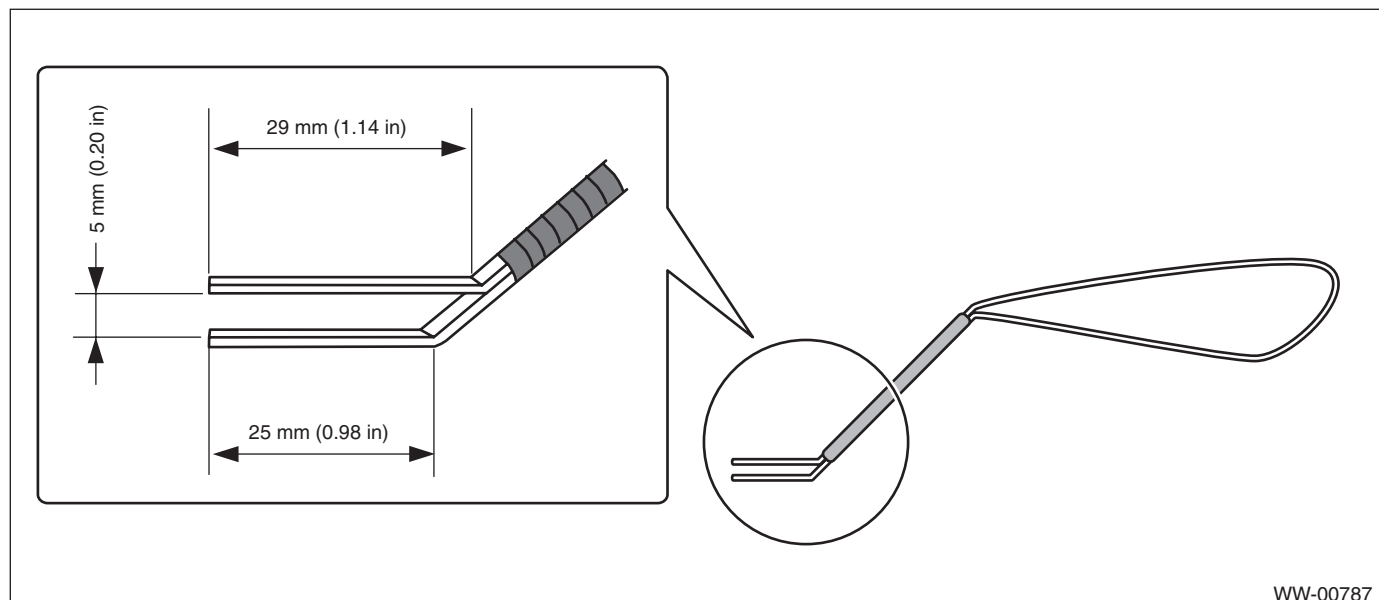
ILLUSTRATION	TOOL NUMBER	DESCRIPTION	REMARKS
 ST1B022XU0	1B022XU0	SUBARU SELECT MONITOR III KIT	Used for setting of each function and troubleshooting for electrical system.

**2. GENERAL TOOL**

TOOL NAME	REMARKS
Circuit tester	Used for checking voltage and continuity.

**NOTE:**

Referring to the data described below, prepare the materials to make a nozzle - windshield washer adjustment tool.



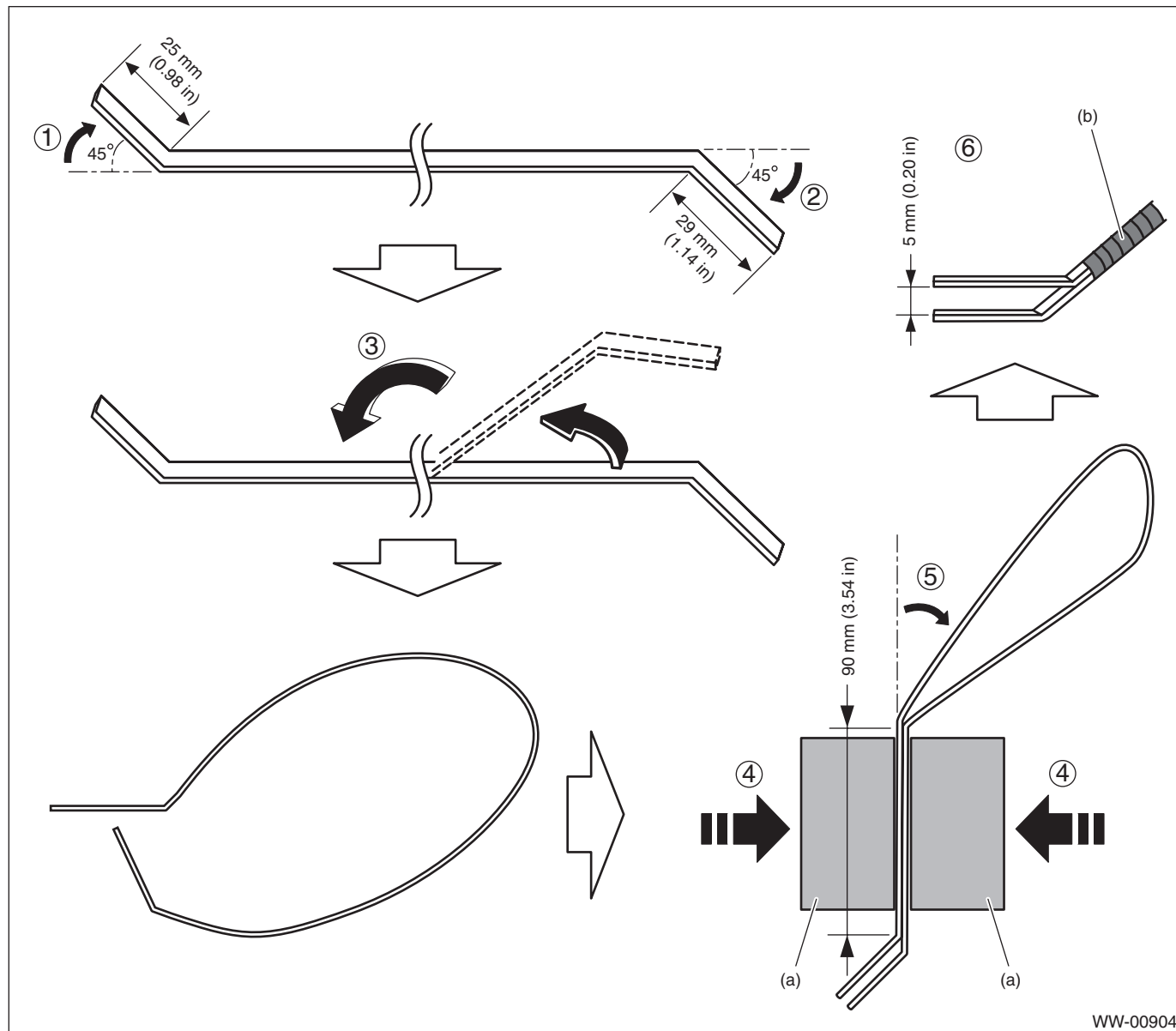
## General Description

### WIPER AND WASHER SYSTEMS

#### Materials

- Vertebra of wiper blade which is to be discarded
- Vinyl tape

#### Steps of making a front washer nozzle adjustment tool



WW-00904

1. Bend the vertebra at the position 25 mm (0.98 in) away from its end by 45°.
2. Bend the vertebra at the position 29 mm (1.14 in) away from the other end by 45°.
3. Double up the vertebra so that the longer end (29 mm (1.14 in)) comes upward.
4. Secure the vertebra with a vise (a) so that the tip clearance becomes 5 mm (0.20 in).
5. Bend the vertebra at the position approximately 90 mm (3.54 in) away from the bending point for the longer end.
6. Check that the tip clearance is 5 mm (0.20 in), and secure the vertebra with vinyl tape (b).