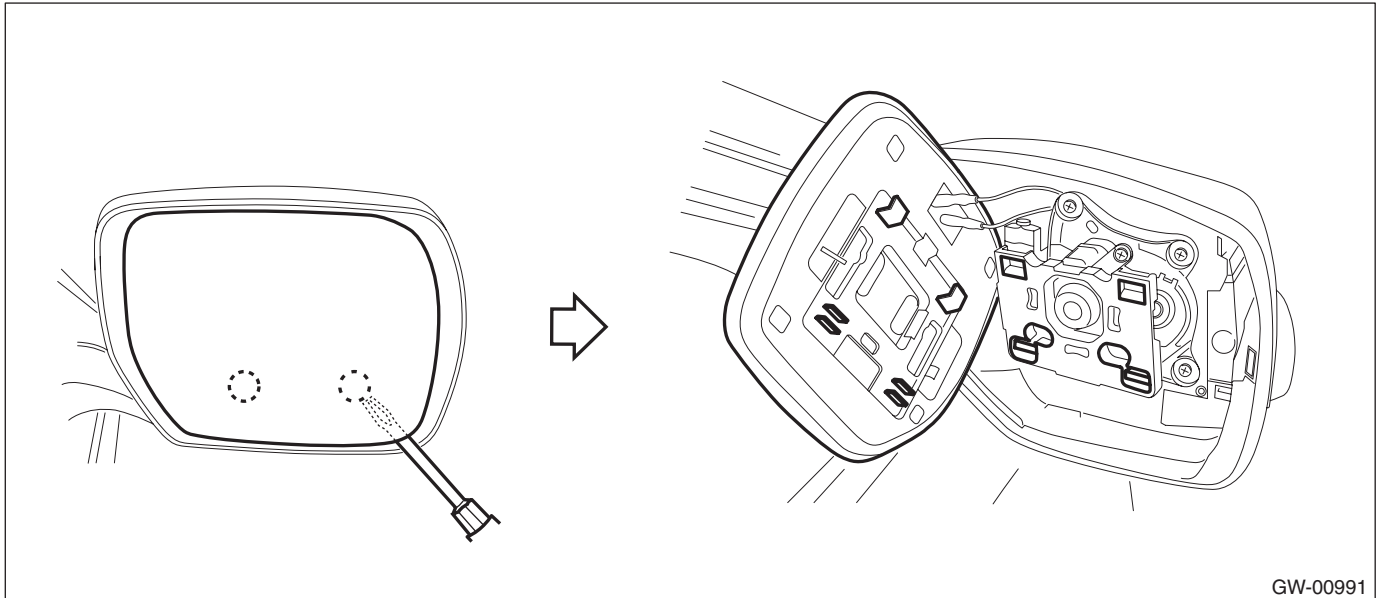


8. Scalp Cap

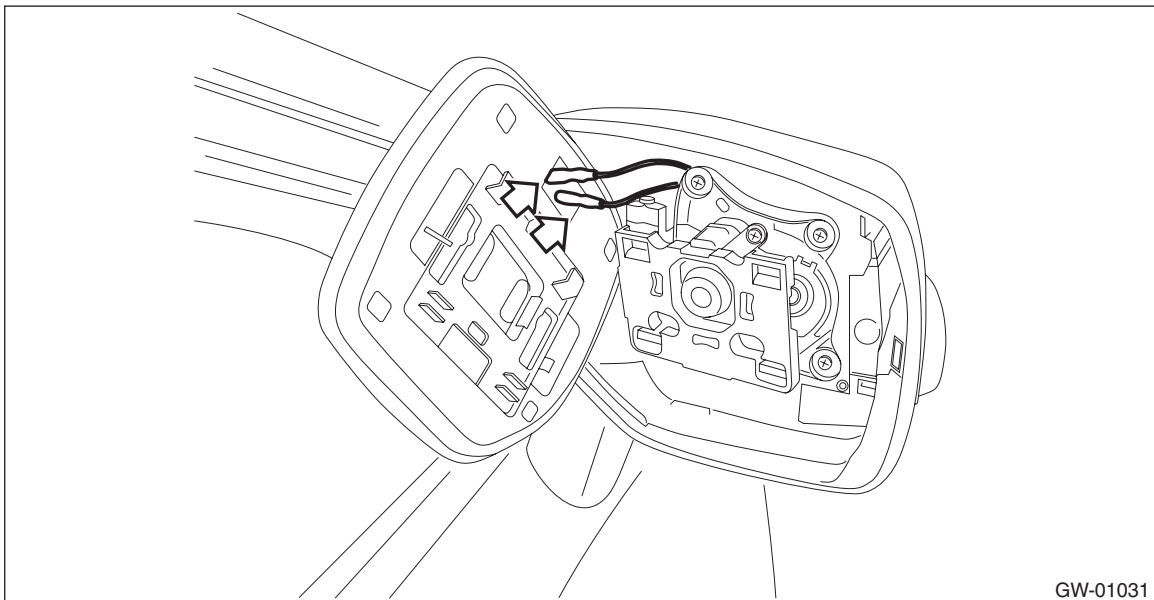
A: REPLACEMENT

CAUTION:

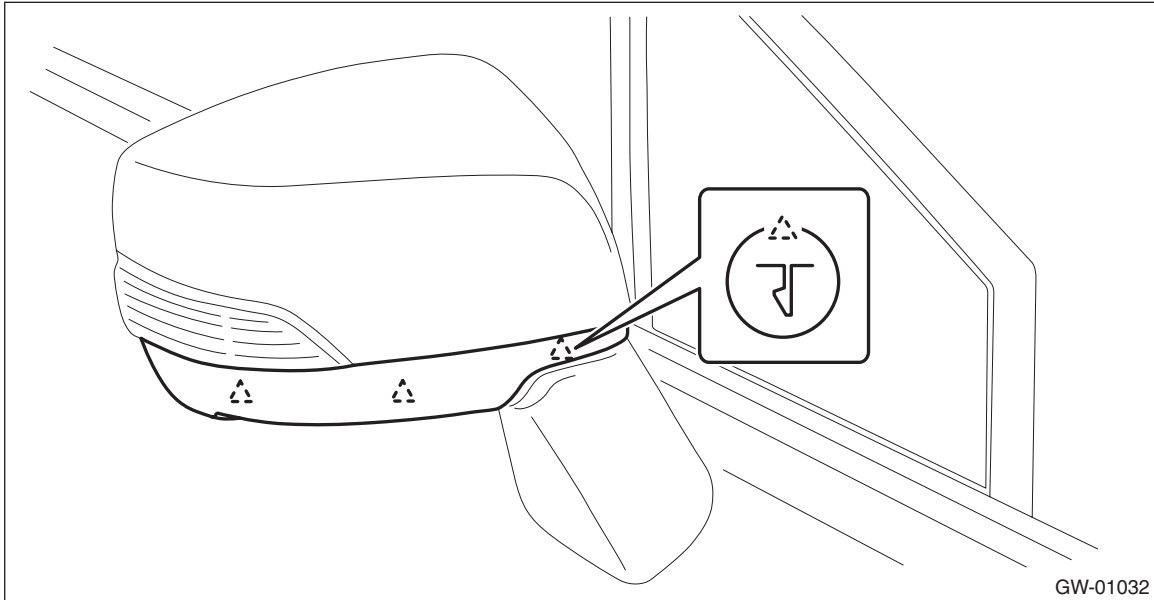
- When removing the mirror - repair, be careful not to damage the back surface of mirror - repair with a flat tip screwdriver.
 - When installing the mirror - repair, insert the connector and clip securely.
- 1) Operate the remote control mirror switch to face the mirror - repair upward.
 - 2) Disconnect the ground cable from battery.
 - 3) Remove the mirror - repair.
 - (1) Using a flat tip screwdriver, release the clip, and slide the mirror - repair downward to remove.



- (2) Disconnect the mirror heater connector. (Model with mirror heater)



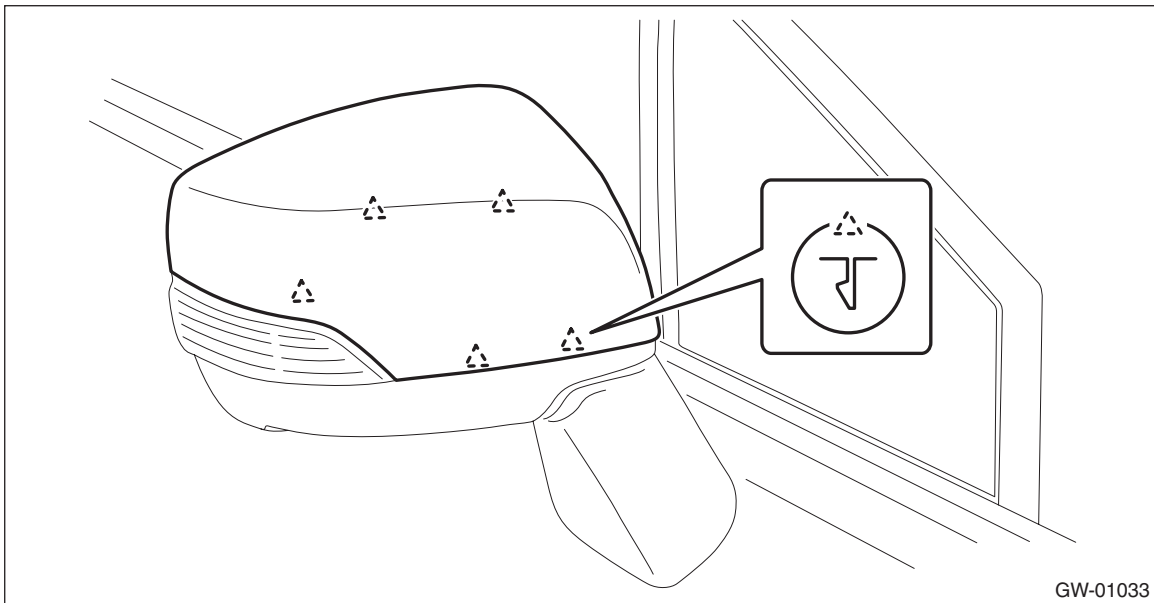
4) Release the claws, and then remove the cover - cap outer mirror lower.



5) Release the claws, and then remove the cover - cap outer mirror.

CAUTION:

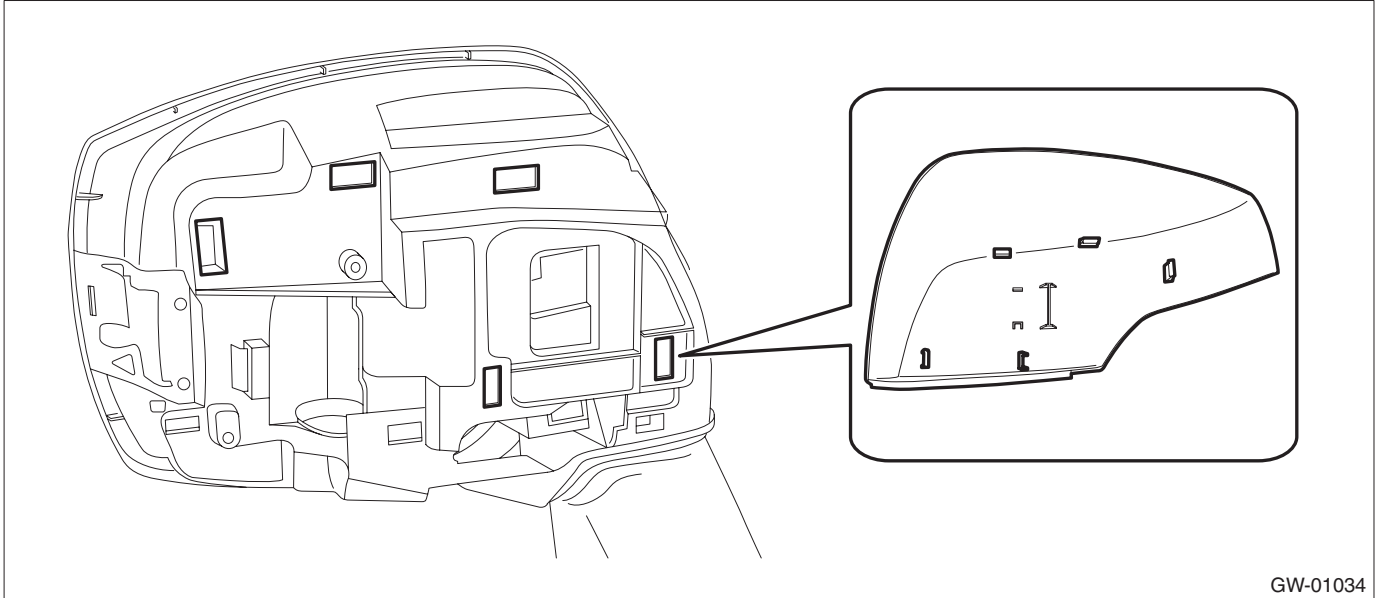
Be careful not to apply excessive force when removing the cover - cap outer mirror, as the lower hooks may become damaged.



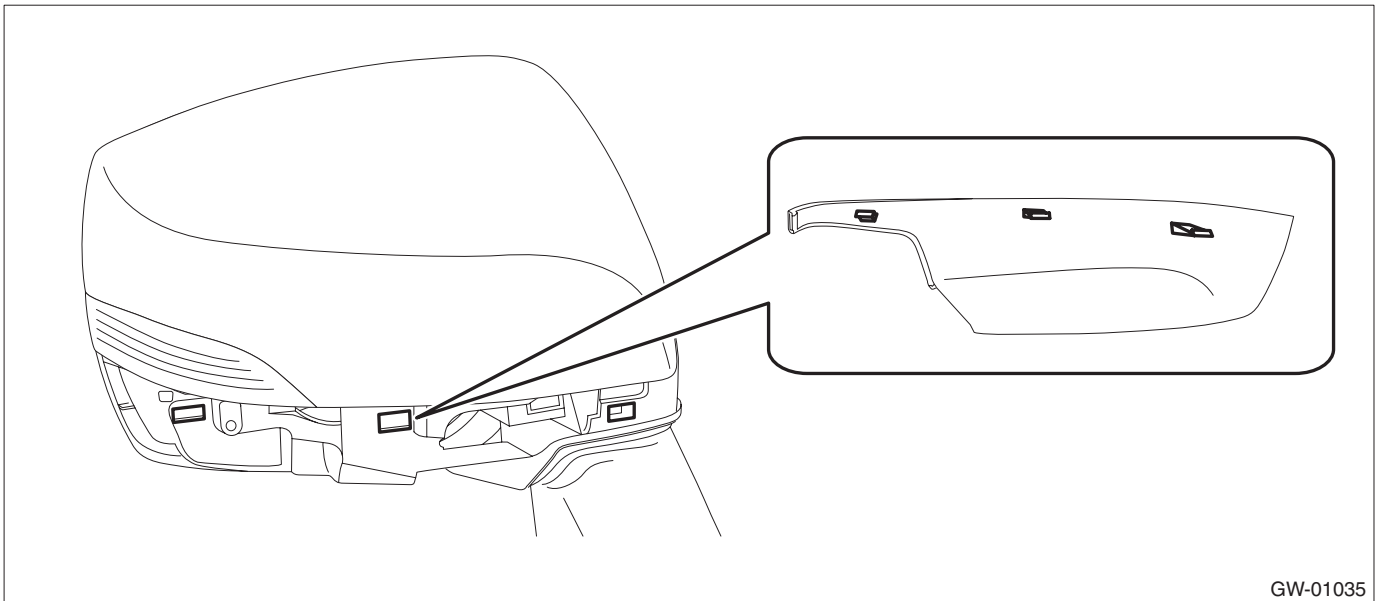
Scalp Cap

GLASS/WINDOWS/MIRRORS

6) Engage the claws into the hole and install the cover - cap outer mirror.



7) Engage the claws into the hole and install the cover - cap outer mirror lower.



8) Check that all the claws are securely engaged.

9) Install the mirror - repair in the reverse order of removal.

CAUTION:

Be sure to insert the connector and clips securely.