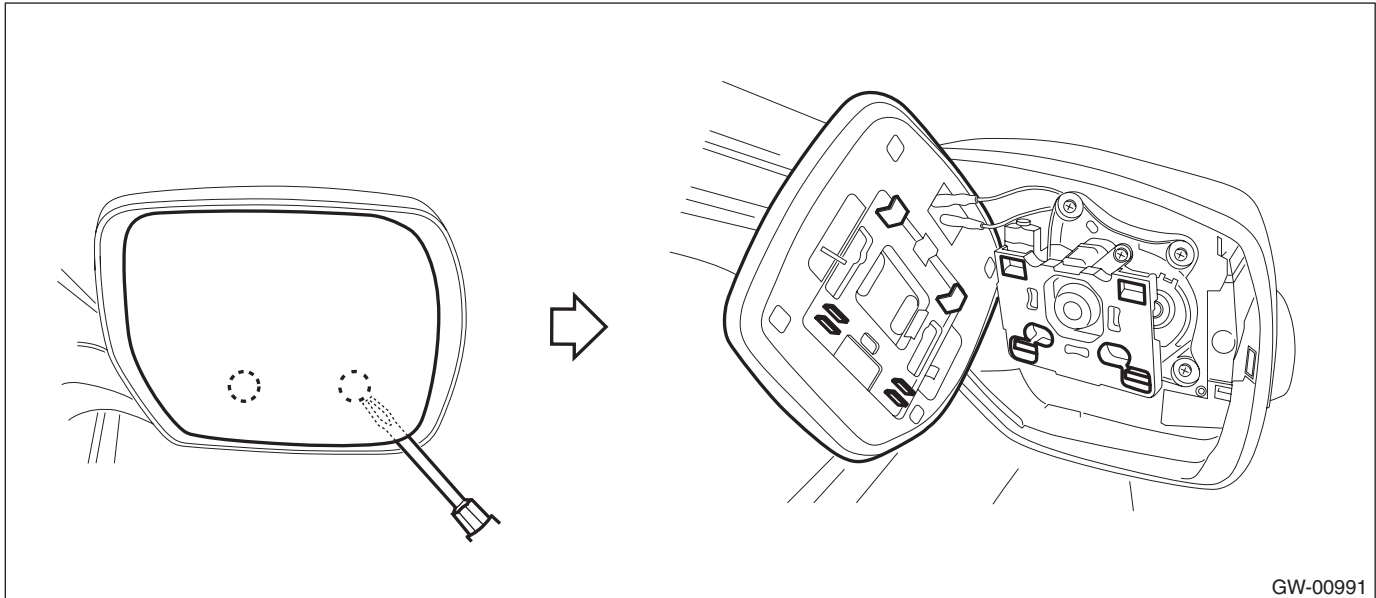


10. Outer Mirror

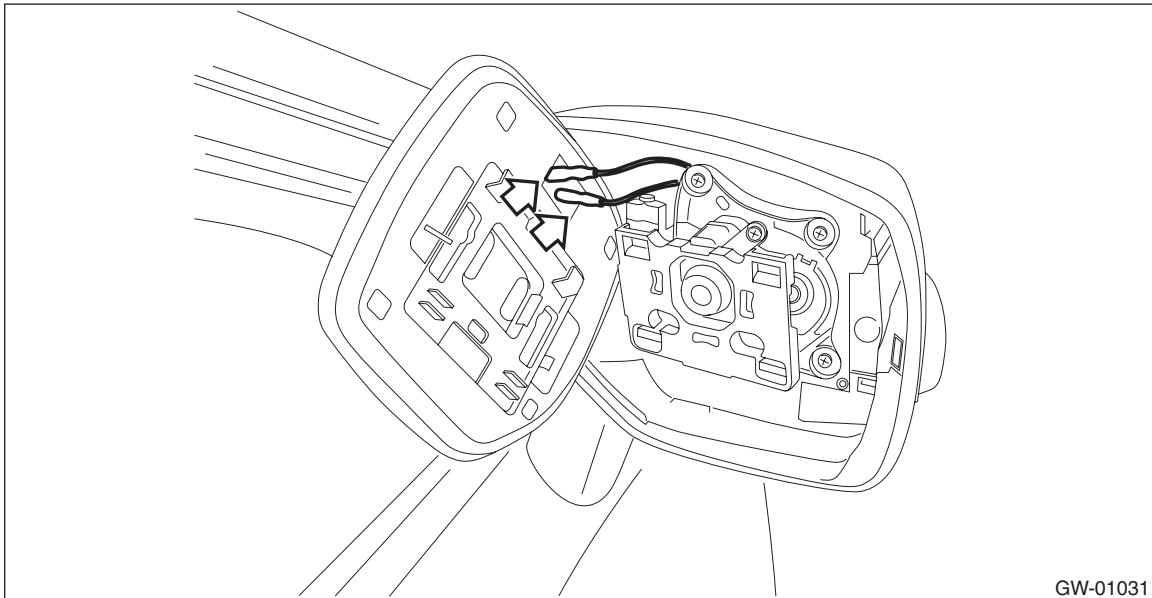
A: REPLACEMENT

CAUTION:

- When removing the mirror - repair, be careful not to damage the back surface of mirror - repair with a flat tip screwdriver.
 - When installing the mirror - repair, insert the connector and clip securely.
- 1) Operate the remote control mirror switch to face the mirror - repair upward.
 - 2) Disconnect the ground cable from battery.
 - 3) Remove the mirror - repair.
 - (1) Disconnect the clips using a flat tip screwdriver.



- (2) Disconnect the mirror heater connector. (Model with mirror heater)



- 4) Install the mirror - repair in the reverse order of removal.