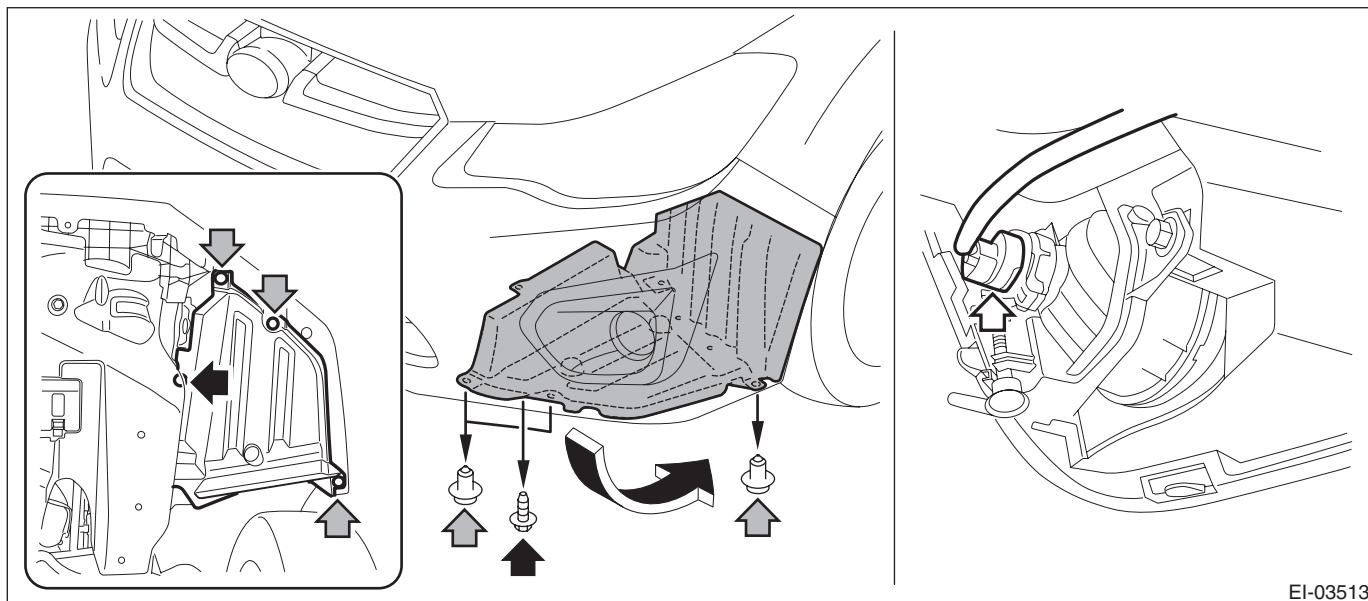


3. Front Fender

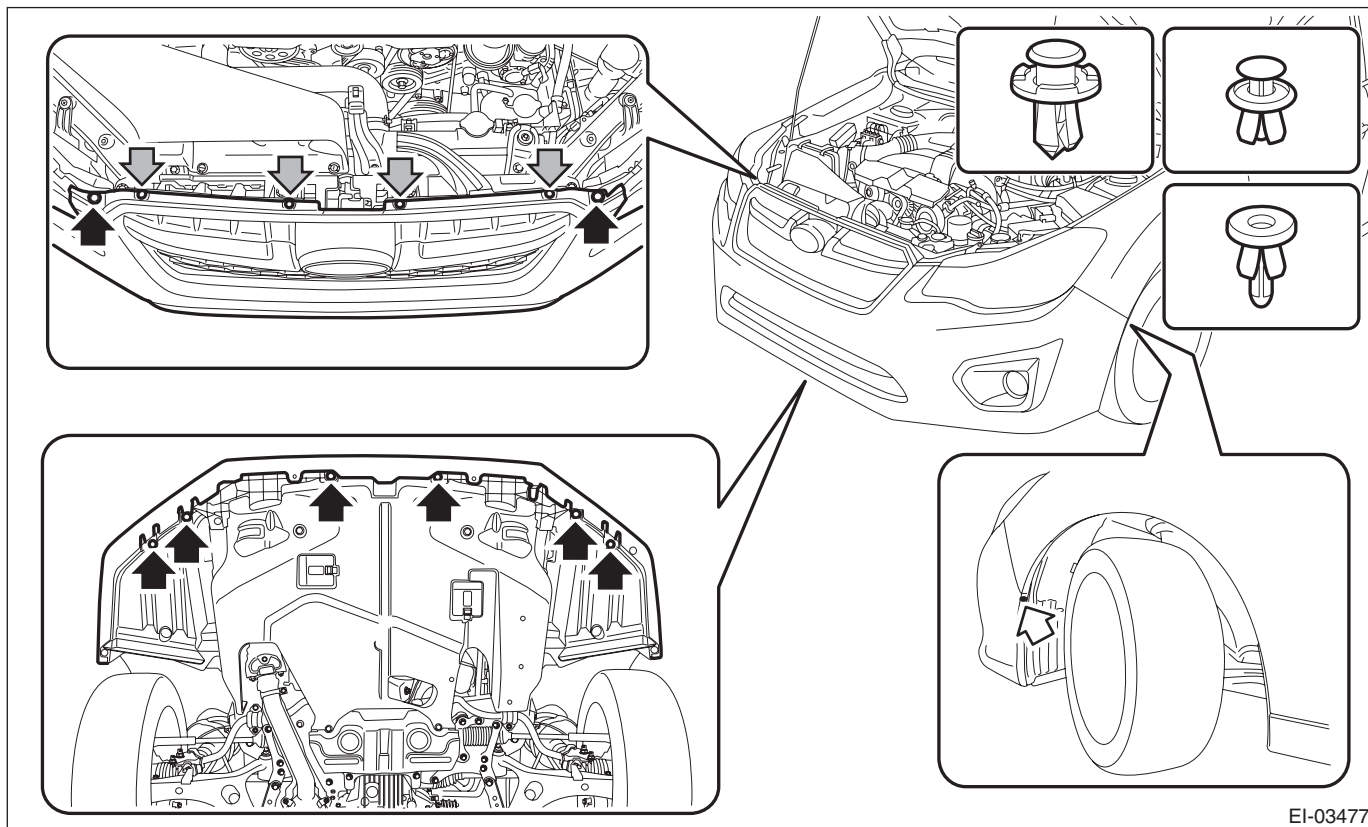
A: REMOVAL

- 1) Disconnect the ground cable from battery.
- 2) Remove the bumper face - front.
 - (1) Remove the screws and clips, and turn over the mud guard - front.
 - (2) Disconnect the connectors of the fog light assembly - front on the LH and RH sides. (Model with fog light)



EI-03513

- (3) Remove the clips at the upper side of the bumper face - front.
- (4) Remove the clips from the fender.
- (5) Remove the clips at the lower side of the bumper face - front.



EI-03477

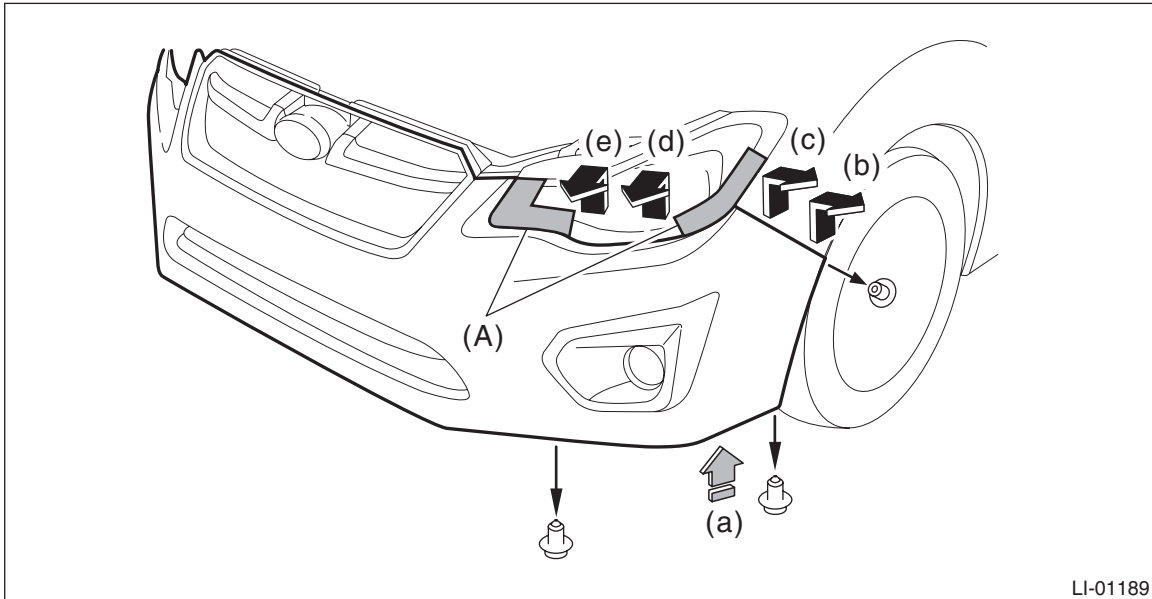
Front Fender

EXTERIOR BODY PANELS

- (6) Apply protective tape (A) to the light assembly - head.
- (7) Release the clips, and while pushing up the lower side (a) of the bumper face - front, remove in the order from (b) to (e).

CAUTION:

Do not pull forcibly. It may damage the flange sections of the bumper face - front.

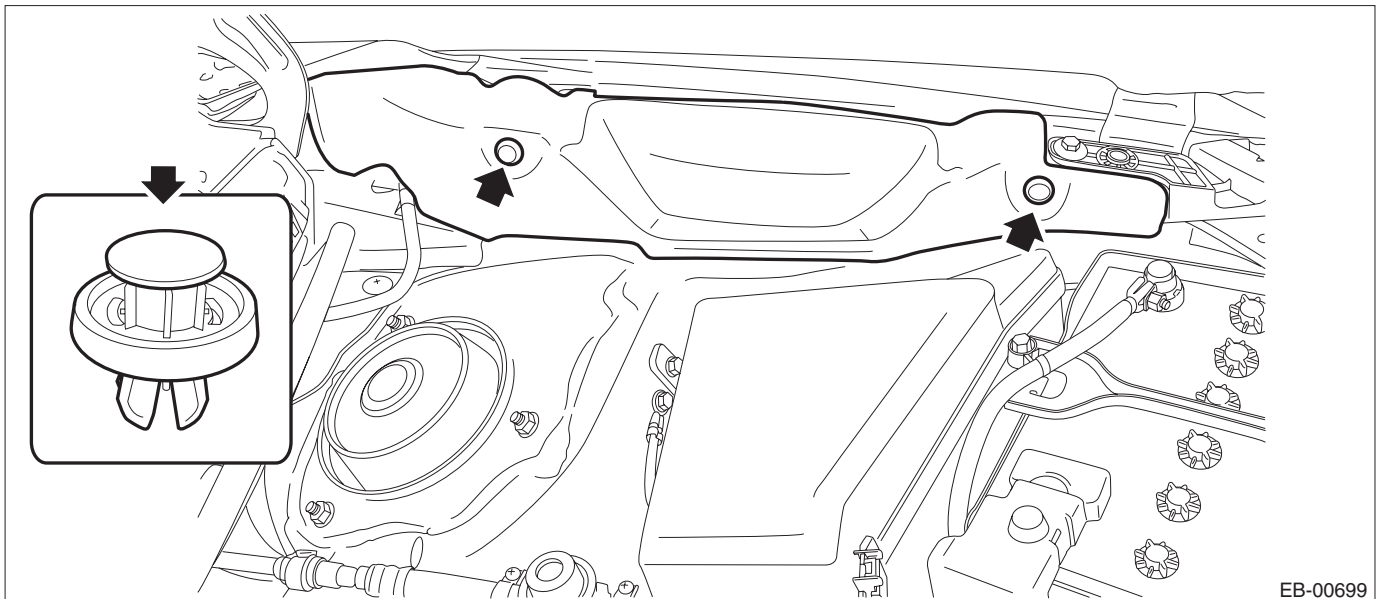


NOTE:

Detach the opposite side in the same manner.

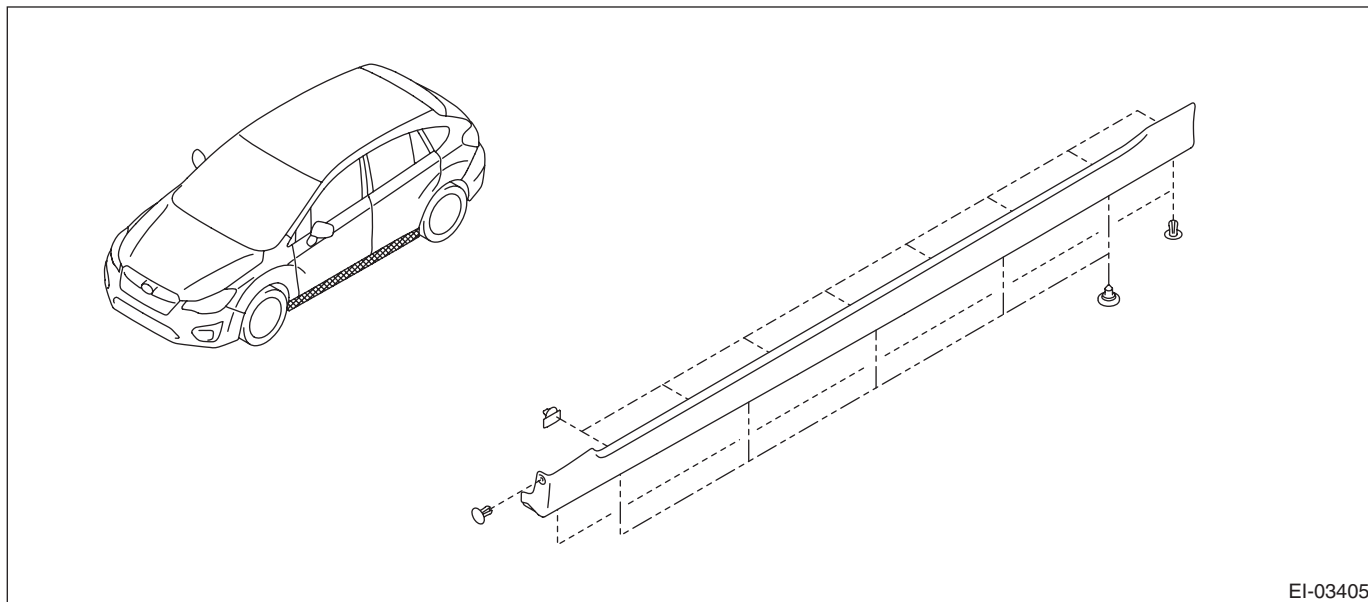
3) Remove the cover - front fender.

- (1) Remove the clip.
- (2) Release the claws by pulling them forward, and remove the cover - front fender.

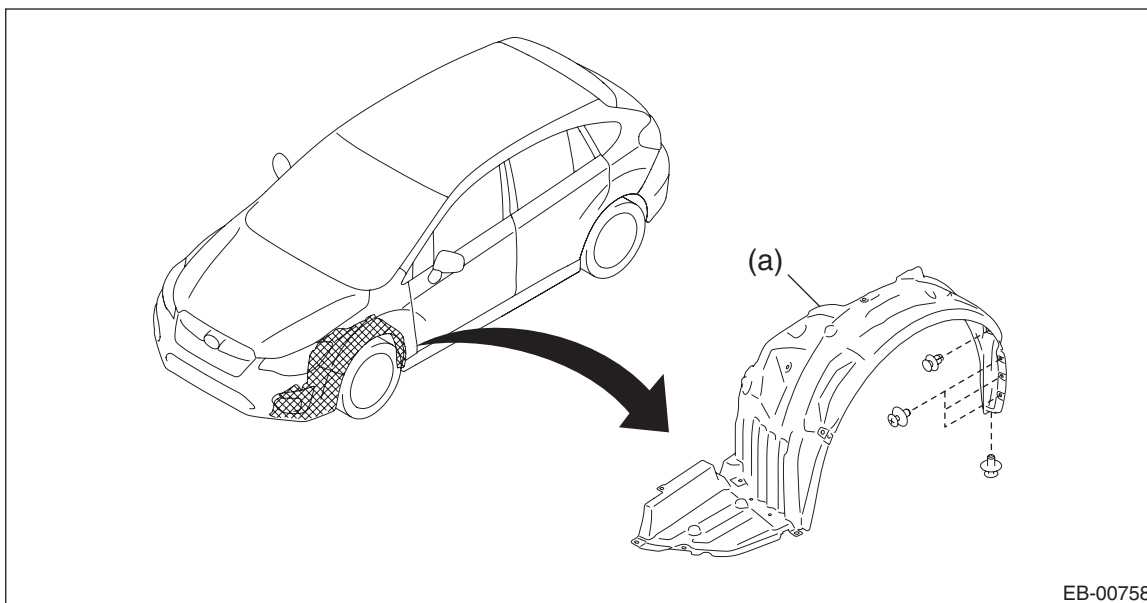


- (3) Remove the light assembly - head. <Ref. to LI-28, WHEN REMOVING RH SIDE, REMOVAL, Head-light Assembly.>

4) Remove the clips and detach the side sill spoiler assembly.



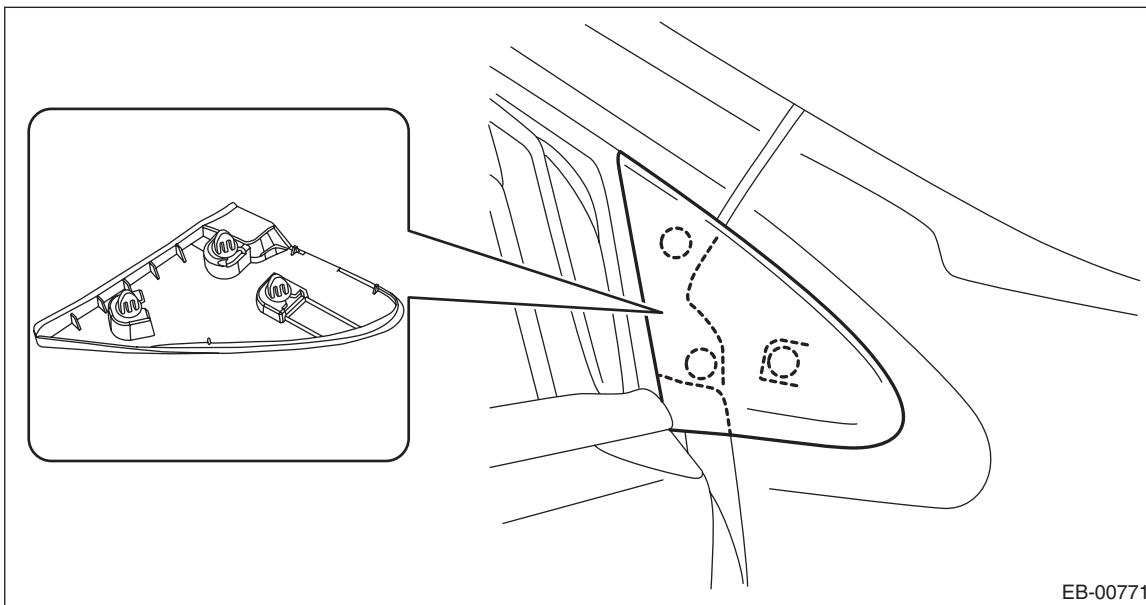
5) Remove the clips, and remove the mud guard - front (a).



Front Fender

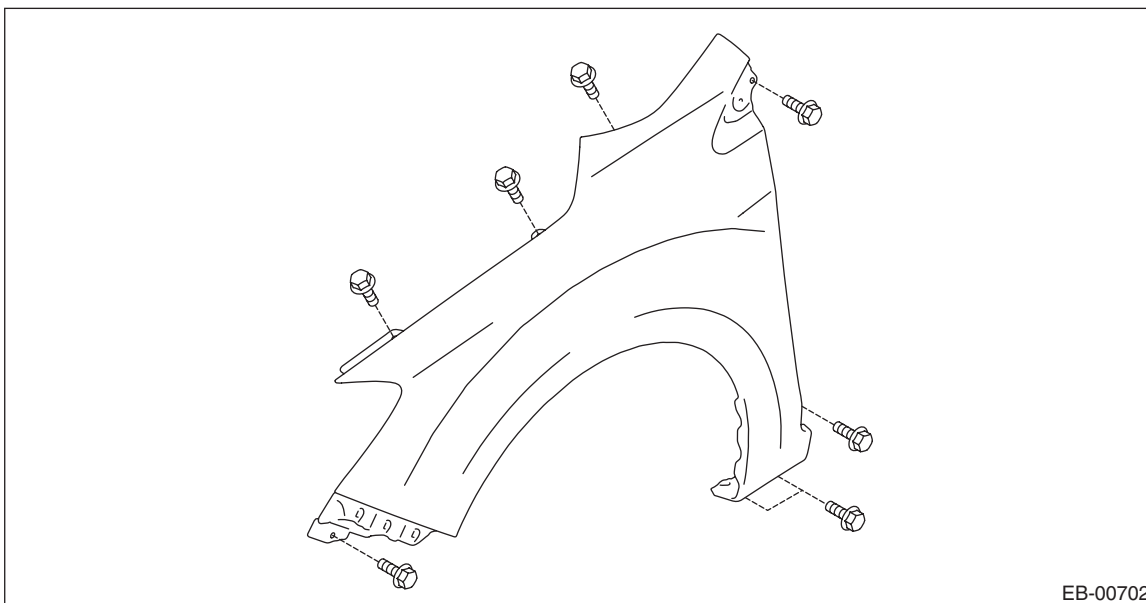
EXTERIOR BODY PANELS

6) Remove the cover - front pillar assembly.



7) Remove the fender COMPL - front.

(1) Remove the bolts, and remove the fender COMPL - front.

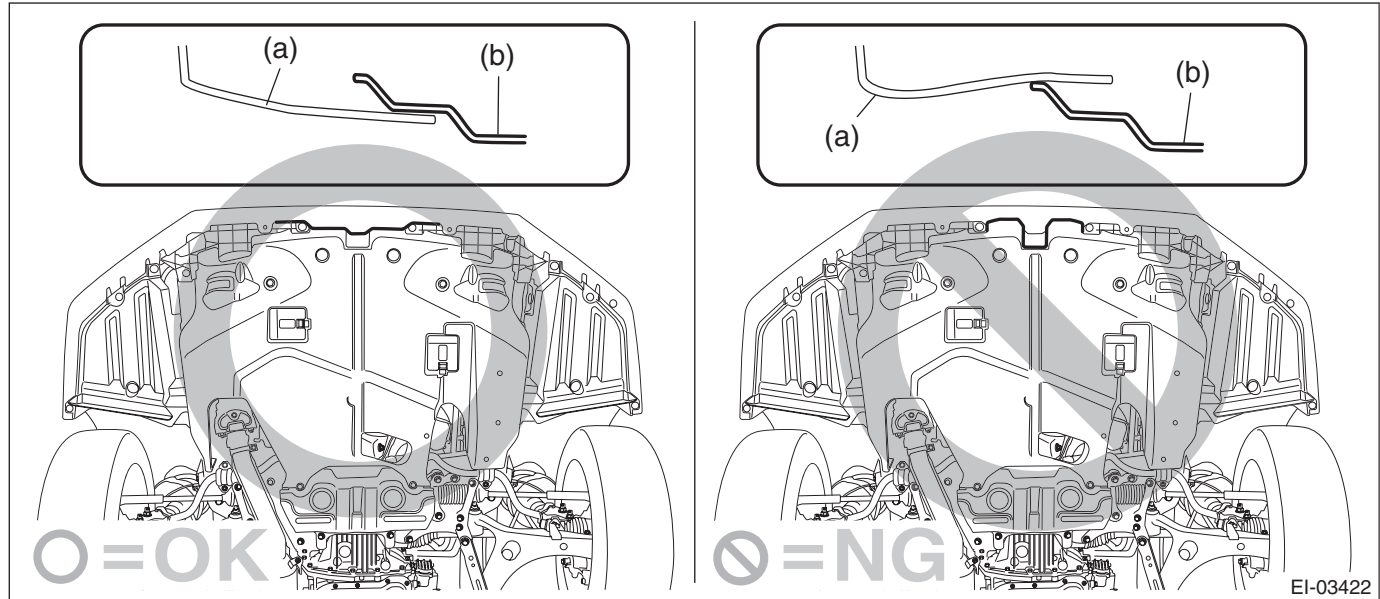


B: INSTALLATION

1) Install each part in the reverse order of removal.

CAUTION:

- After installing the fender COMPL - front, be sure to perform headlight beam adjustment.
- Install the bumper face - front so that the front end of the under cover (b) comes inside the bumper face - front (a).



Tightening torque:

Fender COMPL - front: 7.5 N·m (0.76 kgf-m, 5.5 ft-lb)

Light assembly - head: 7.5 N·m (0.76 kgf-m, 5.5 ft-lb)

NOTE:

When installing the fender COMPL - front, make sure that a uniform clearance is created around it.

- Fender COMPL - front to Hood COMPL - front: <Ref. to EB-12, ADJUSTMENT, Front Hood.>
- Fender COMPL - front to Panel assembly - front door: <Ref. to EB-27, ADJUSTMENT, Front Door.>

2) Adjust the headlight beam and fog light beam.

- Adjust the headlight beam. <Ref. to LI-35, HEADLIGHT BEAM ADJUSTMENT, ADJUSTMENT, Headlight Assembly.>
- Adjust the fog light beam. (Model with fog light) <Ref. to LI-55, FOG LIGHT AIMING, ADJUSTMENT, Front Fog Light Assembly.>