

# General Description

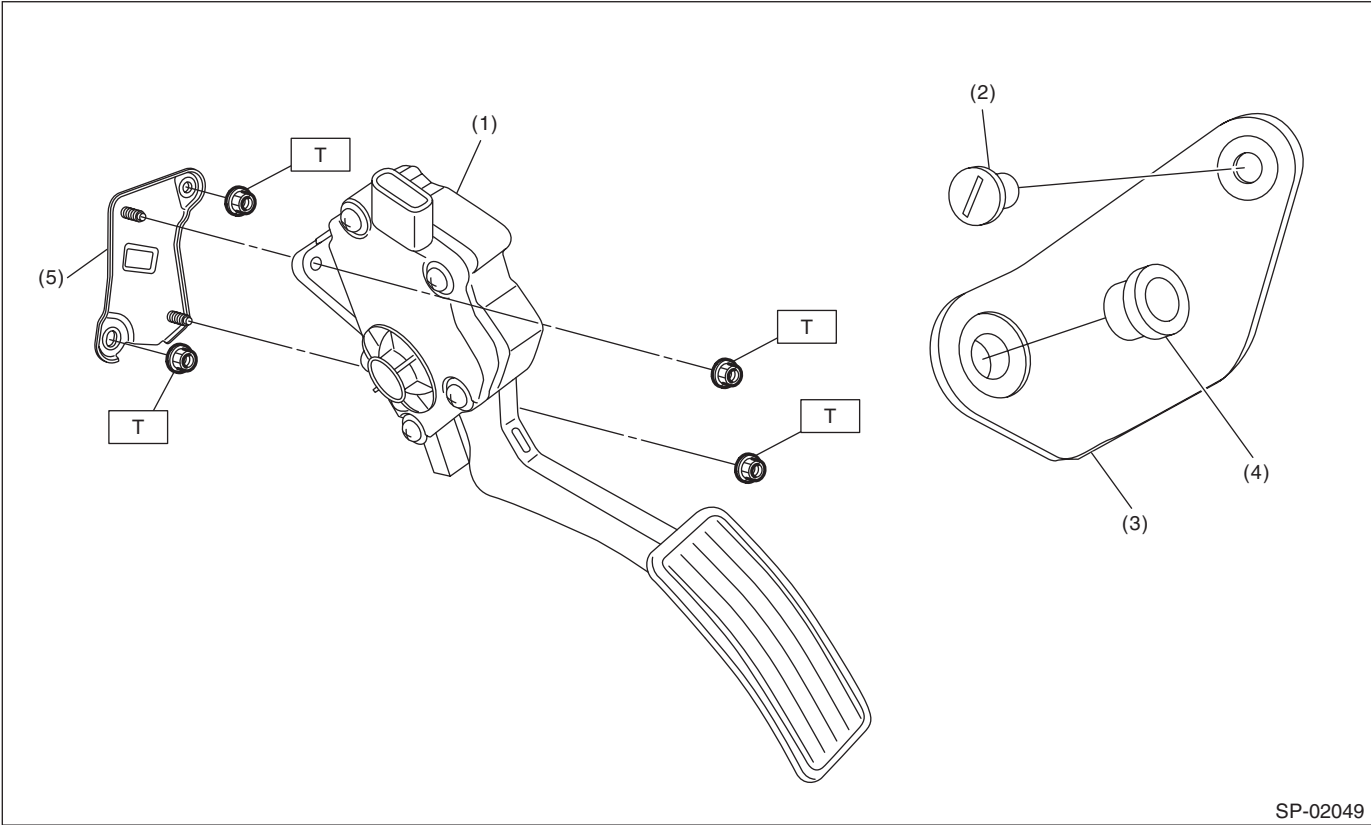
## SPEED CONTROL SYSTEMS

### 1. General Description

#### A: SPECIFICATION

|                   |        |              |                             |
|-------------------|--------|--------------|-----------------------------|
| Accelerator pedal | Stroke | At pedal pad | 50 — 59 mm (1.97 — 2.32 in) |
|-------------------|--------|--------------|-----------------------------|

#### B: COMPONENT



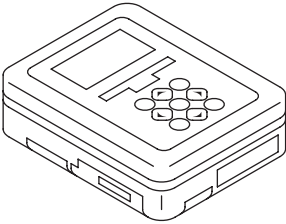
- |                            |                               |
|----------------------------|-------------------------------|
| (1) Accelerator pedal ASSY | (4) Accelerator stopper       |
| (2) Clip                   | (5) Accelerator pedal bracket |
| (3) Accelerator plate      |                               |

**Tightening torque:***N·m (kgf-m, ft-lb)*  
**T: 18 (1.8, 13.3)**

**C: CAUTION**

- Wear appropriate work clothing, including a cap, protective goggles and protective shoes when performing any work.
- Remove contamination including dirt and corrosion before removal or installation.
- Keep the parts in order and protect them from dust and dirt.
- Before removal or installation, be sure to clarify the failure. Avoid unnecessary removal, installation, disassembly and replacement.
- Vehicle components are extremely hot after driving. Be wary of receiving burns from heated parts.
- Be sure to tighten fasteners including bolts and nuts to the specified torque.
- Place shop jacks or rigid racks at the specified points.
- Before disconnecting connectors of sensors or units, be sure to disconnect the ground cable from the battery.

**D: PREPARATION TOOL****1. SPECIAL TOOL**

| ILLUSTRATION  | TOOL NUMBER | DESCRIPTION                   | REMARKS                                    |
|---|-------------|-------------------------------|--|
| <br>ST1B022XU0 | 1B022XU0    | SUBARU SELECT MONITOR III KIT | Used for inspecting the accelerator pedal. |

**2. GENERAL TOOL**

| TOOL NAME      | REMARKS                     |
|----------------|-----------------------------|
| Circuit tester | Used for measuring voltage. |