

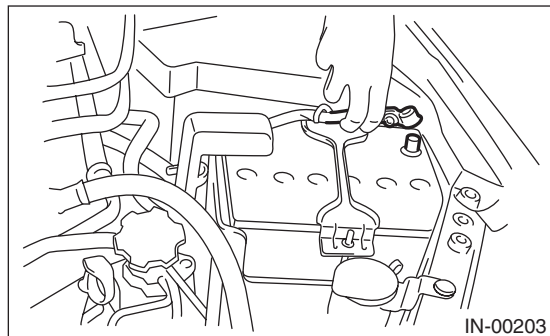
Purge Control Solenoid Valve

EMISSION CONTROL (AUX. EMISSION CONTROL DEVICES)

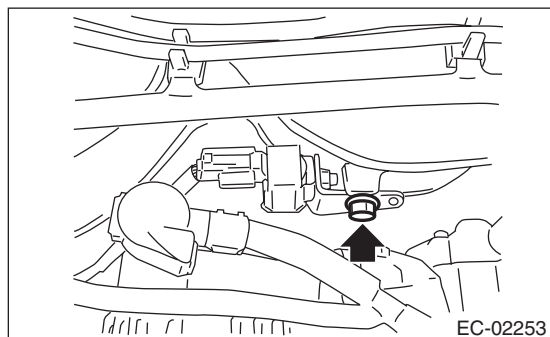
5. Purge Control Solenoid Valve

A: REMOVAL

- 1) Disconnect the ground cable from battery.



- 2) Disconnect the connector and evaporation hoses of purge control solenoid valve, and then remove the purge control solenoid valve.

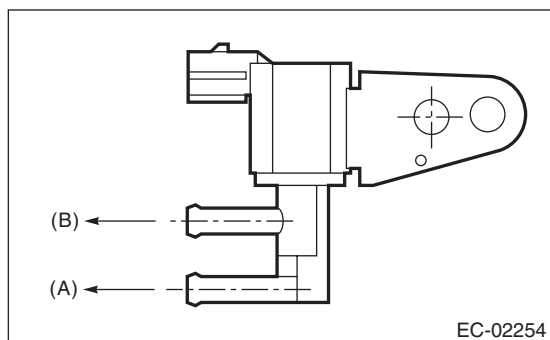


B: INSTALLATION

Install in the reverse order of removal.

NOTE:

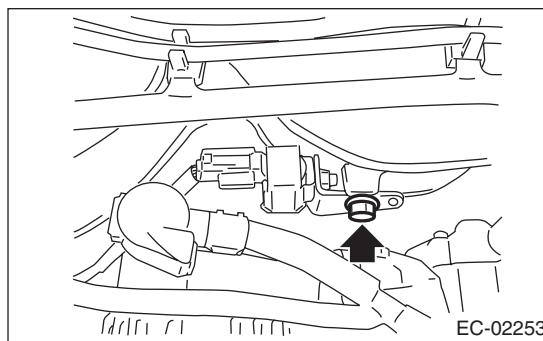
Connect the evaporation hose as shown in the figure.



- (A) To fuel pipe (intake manifold)
(B) To fuel pipe (evaporation line)

Tightening torque:

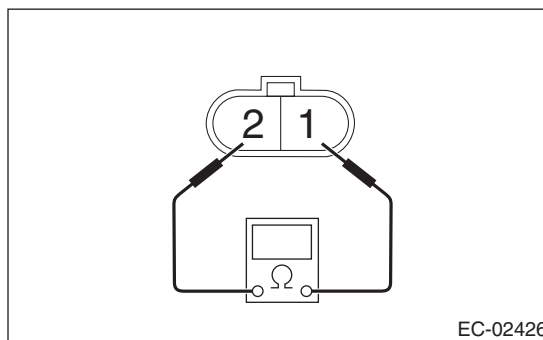
19 N·m (1.9 kgf-m, 14.0 ft-lb)



C: INSPECTION

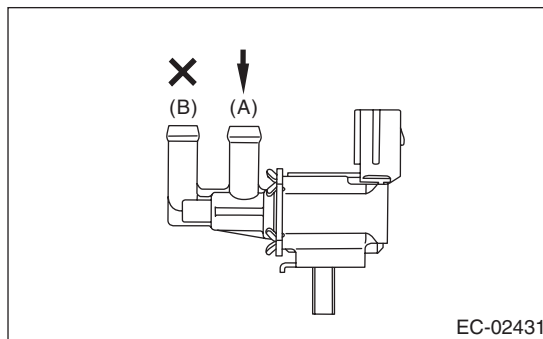
1. PURGE CONTROL SOLENOID VALVE

- 1) Check that the purge control solenoid valve has no deformation, cracks or other damages.
- 2) Measure the resistance between the purge control solenoid valve terminals.



Terminal No.	Standard
1 and 2	24±3 Ω (20°C (68°F))

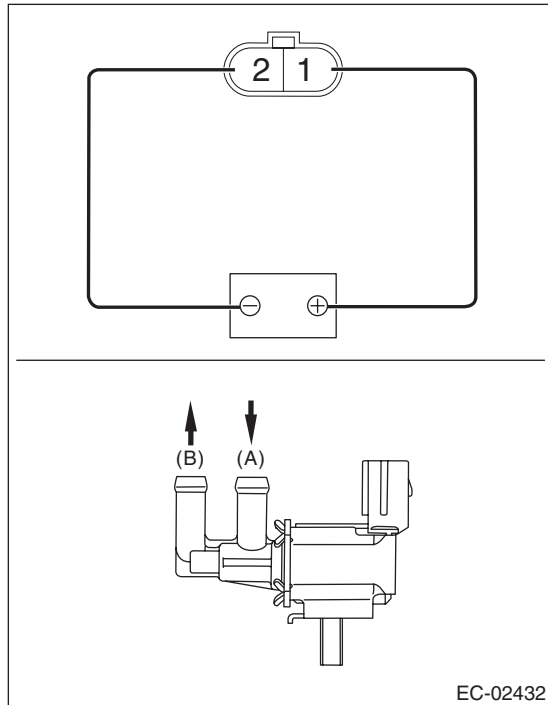
- 3) Check that air does not come out from (B) when air is blown into (A).



Purge Control Solenoid Valve

EMISSION CONTROL (AUX. EMISSION CONTROL DEVICES)

4) Connect the terminal No. 1 to the battery positive terminal and the terminal No. 2 to the battery negative terminal. Check that air is discharged from (B), when supplying air to (A).



2. OTHER INSPECTIONS

Check that the evaporation hose has no cracks, damage or loose part.