

General Description

VEHICLE DYNAMICS CONTROL (VDC)

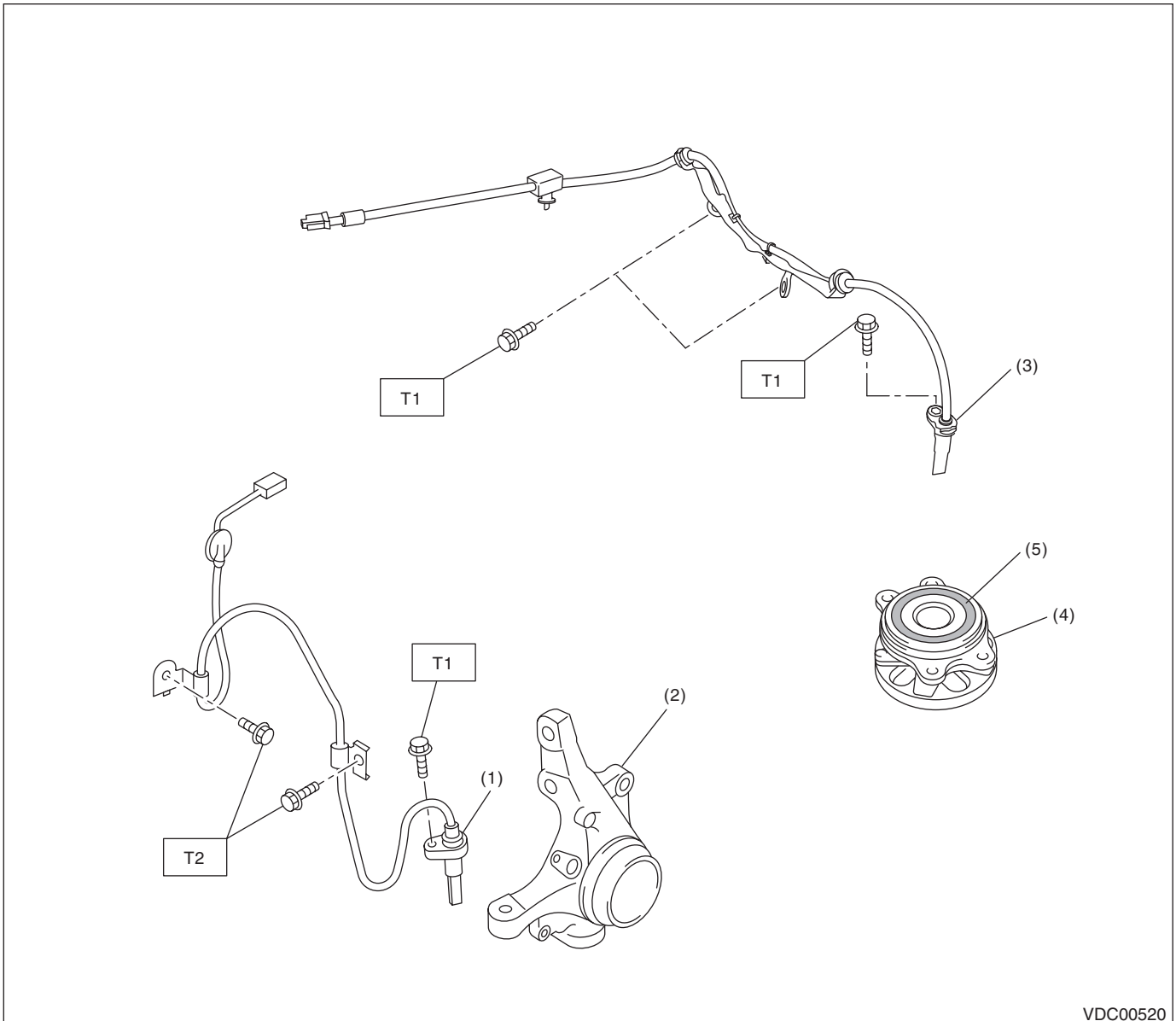
1. General Description

A: SPECIFICATION

Item			Specification or identification	
ABS wheel speed sensor	ABS wheel speed sensor gap (for reference)	Front	0.77 — 1.43 mm (0.030 — 0.056 in)	
		Rear	0.43 — 1.78 mm (0.017 — 0.070 in)	
	Identifications of harness (marks, color)	Front	RH	K1 (White)
			LH	K2 (Yellow)
		Rear	RH	P5 (White)
			LH	P6 (Yellow)
VDCCM&H/U Identification	AT	S1		
	MT	S2		

B: COMPONENT

1. ABS WHEEL SPEED SENSOR



VDC00520

- | | |
|----------------------------------|----------------------|
| (1) Front ABS wheel speed sensor | (4) Hub unit bearing |
| (2) Front housing | (5) Magnetic encoder |
| (3) Rear ABS wheel speed sensor | |

Tightening torque: N-m (kgf-m, ft-lb)

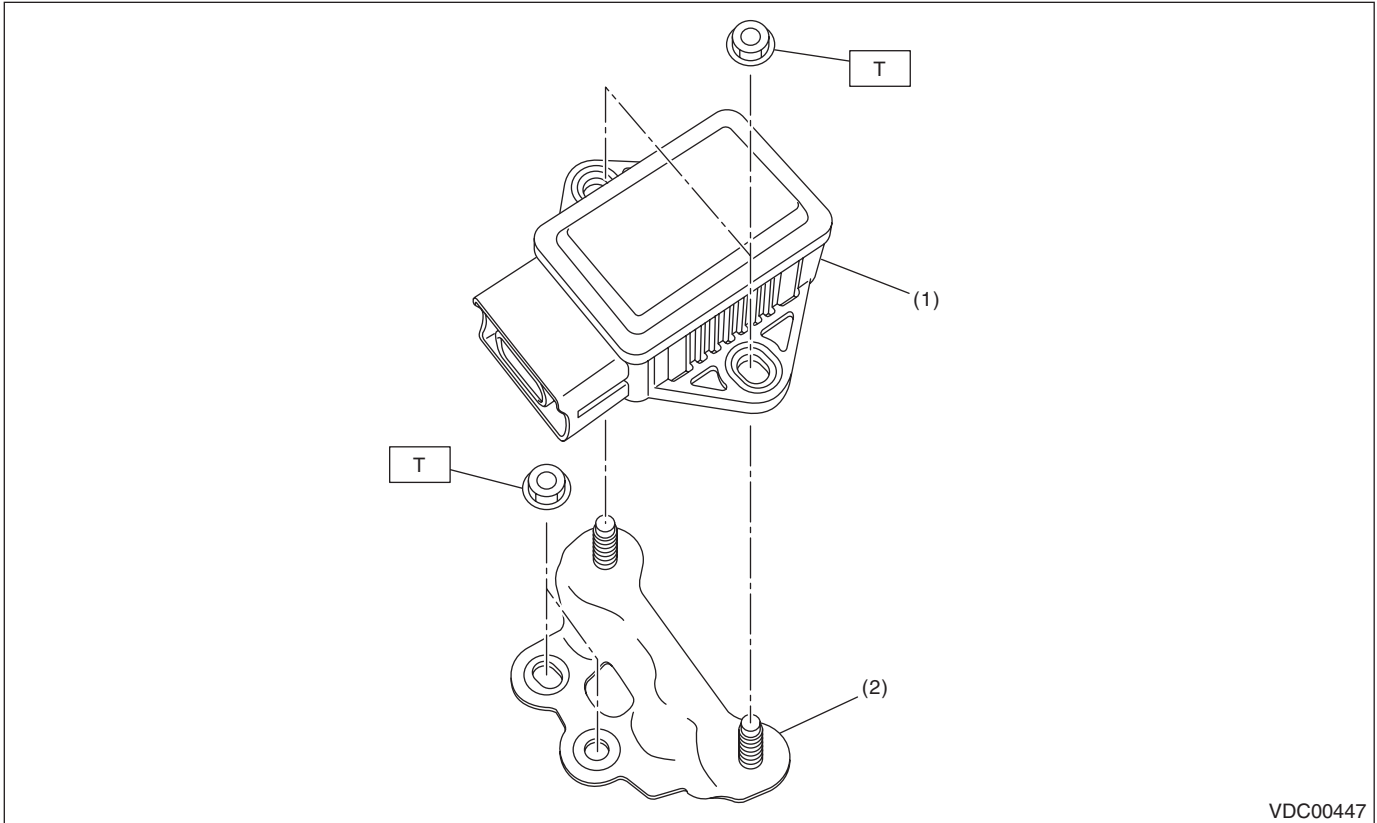
T1: 7.5 (0.76, 5.5)

T2: 33 (3.4, 24.3)

General Description

VEHICLE DYNAMICS CONTROL (VDC)

2. YAW RATE & G SENSOR



VDC00447

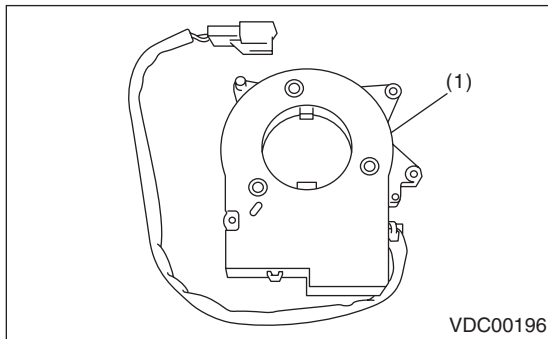
(1) Yaw rate & G sensor

(2) Bracket

Tightening torque: N·m (kgf·m, ft·lb)

T: 7.5 (0.76, 5.5)

3. STEERING ANGLE SENSOR



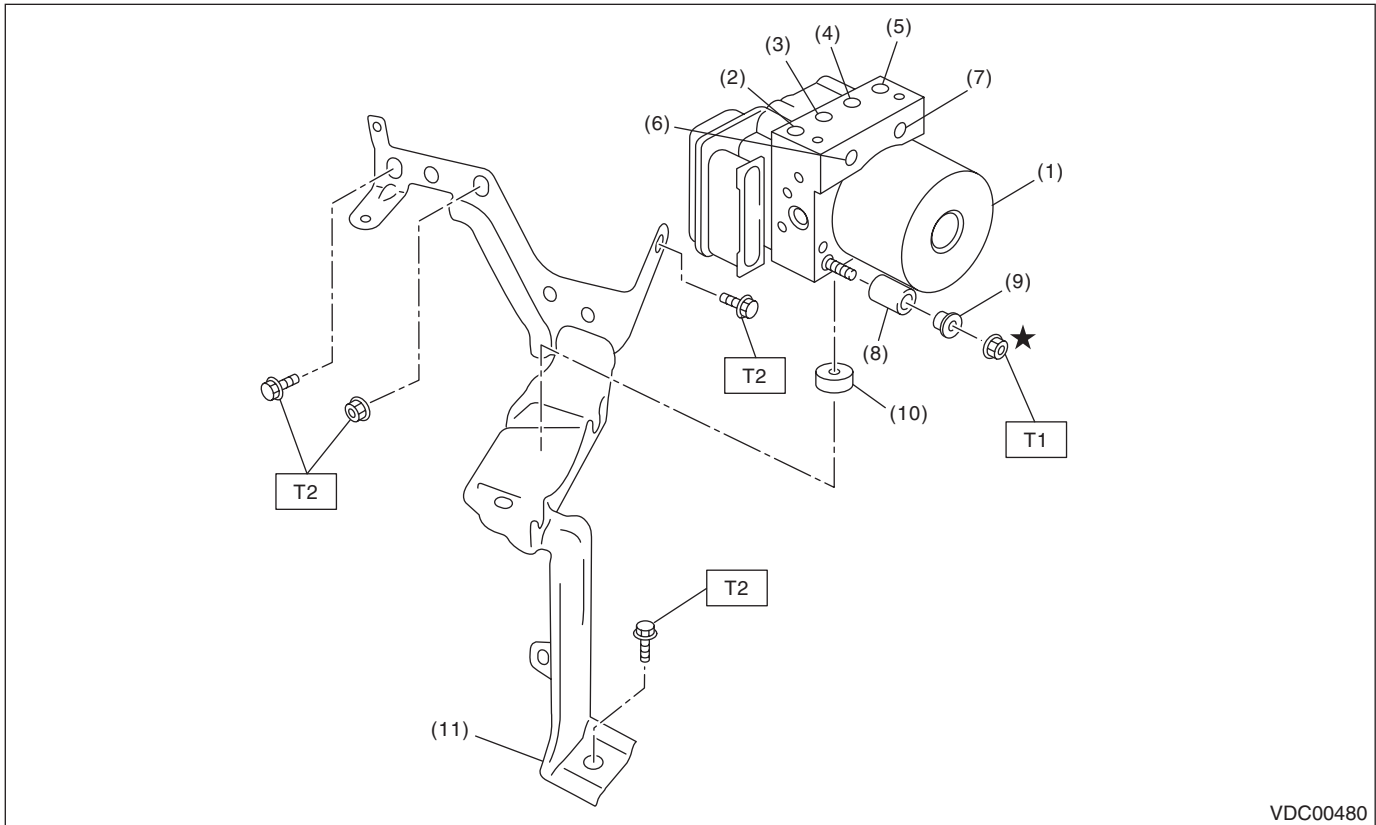
VDC00196

(1) Steering angle sensor

General Description

VEHICLE DYNAMICS CONTROL (VDC)

4. VDC CONTROL MODULE AND HYDRAULIC CONTROL UNIT (VDCCM&H/U)



VDC00480

- | | | |
|---|---------------------|--------------|
| (1) VDC control module and hydraulic control unit (VDCCM&H/U) | (6) Primary inlet | (11) Bracket |
| (2) Front RH outlet | (7) Secondary inlet | |
| (3) Rear LH outlet | (8) Damper | |
| (4) Rear RH outlet | (9) Spacer | |
| (5) Front LH outlet | (10) Damper | |

Tightening torque: N·m (kgf·m, ft·lb)

T1: 7.5 (0.76, 5.5)

T2: 33 (3.4, 24.3)

General Description

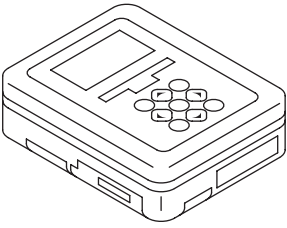
VEHICLE DYNAMICS CONTROL (VDC)

C: CAUTION

- Wear appropriate work clothing, including a cap, protective goggles and protective shoes when performing any work.
- Remove contamination including dirt and corrosion before removal, installation or disassembly.
- Keep the disassembled parts in order and protect them from dust and dirt.
- Before disconnecting connectors of sensors or units, be sure to disconnect the ground cable from battery.
- Before removal, installation or disassembly, be sure to clarify the failure. Avoid unnecessary removal, installation, disassembly and replacement.
- Vehicle components are extremely hot after driving. Be wary of receiving burns from heated parts.
- Be sure to tighten fasteners including bolts and nuts to the specified torque.
- Place shop jacks or rigid racks at the specified points.

D: PREPARATION TOOL

1. SPECIAL TOOL

ILLUSTRATION	TOOL NUMBER	DESCRIPTION	REMARKS
 ST1B022XU0	1B022XU0	SUBARU SELECT MONITOR III KIT	Used for troubleshooting the electrical system.

2. GENERAL TOOL

TOOL NAME	REMARKS
Circuit tester	Used for measuring resistance, voltage and current.
Pressure gauge	Used for measuring oil pressure.
Oscilloscope	Used for measuring the sensor.
TORX® bit E5	Used for replacing VDC control module.