

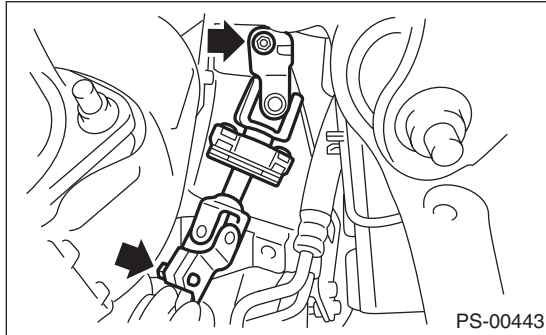
# Universal Joint

POWER ASSISTED SYSTEM (POWER STEERING)

## 3. Universal Joint

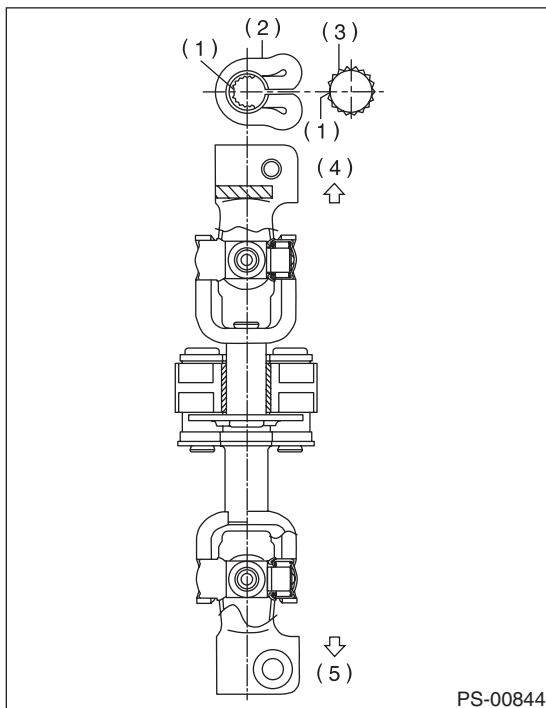
### A: REMOVAL

- 1) Remove the steering wheel. <Ref. to PS-12, REMOVAL, Steering Wheel.>
- 2) Place alignment marks on universal joint.
- 3) Remove the universal joint bolt and remove the universal joint.



### B: INSTALLATION

- 1) Align the cutout portion at serrated section of the column shaft and yoke, then install the universal joint into column shaft.



- (1) Cutout portion
- (2) Yoke
- (3) Column shaft
- (4) Column shaft side
- (5) Gearbox side

- 2) Install the universal joint to the serrations of gearbox assembly by matching alignment marks.

- 3) Tighten the bolts.

### CAUTION:

**Excessively large tightening torque of universal joint bolts may lead to heavy steering wheel operation.**

### Tightening torque:

**24 N·m (2.4 kgf-m, 17.7 ft-lb)**

**Clearance between coupling of universal joint and turbo cover:**

**15 mm (0.59 in) or more**

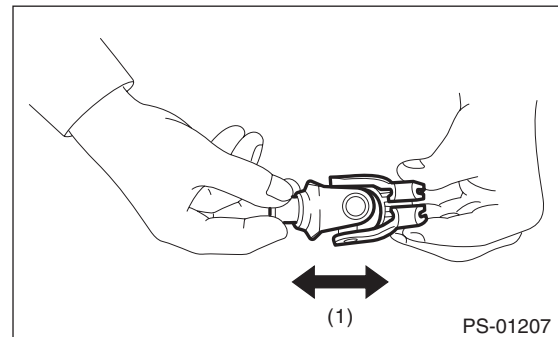
- 4) Align the center position of the roll connector. <Ref. to AB-28, ADJUSTMENT, Roll Connector.>
- 5) Install the steering wheel. <Ref. to PS-12, INSTALLATION, Steering Wheel.>

### C: INSPECTION

- 1) Check for wear, damage or any other faults. Replace as necessary

### Service limit:

**Universal joint play: 0 mm (0 in)**

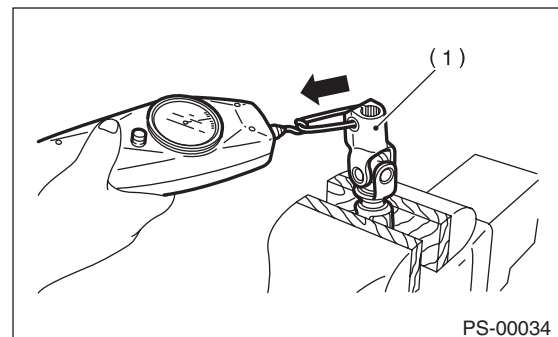


- (1) Play

- 2) Measure the swing torque of universal joint.

### Service limit:

**Maximum load: 3.8 N (0.39 kgf, 0.86 lbf) or less**



- (1) Yoke (Gearbox side)

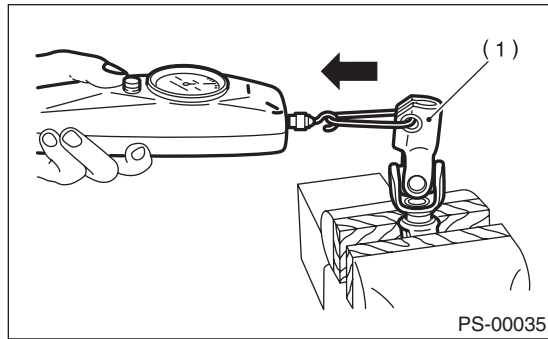
# Universal Joint

## POWER ASSISTED SYSTEM (POWER STEERING)

---

### **Service limit:**

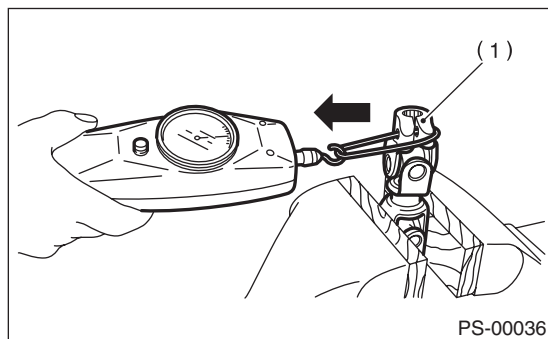
**Maximum load: 3.8 N (0.39 kgf, 0.86 lbf) or less**



(1) Yoke (Gearbox side)

### **Service limit:**

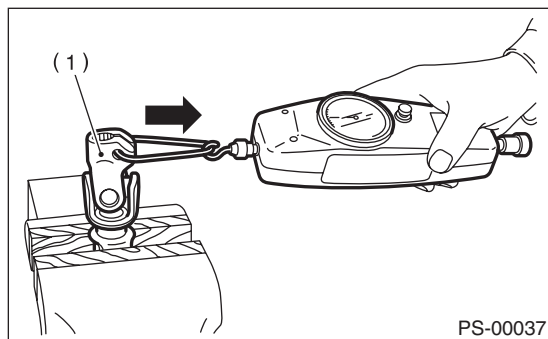
**Maximum load: 7.3 N (0.74 kgf, 1.64 lbf) or less**



(1) Yoke (Steering column side)

### **Service limit:**

**Maximum load: 7.3 N (0.74 kgf, 1.64 lbf) or less**



(1) Yoke (Steering column side)