

General Description

PARKING BRAKE

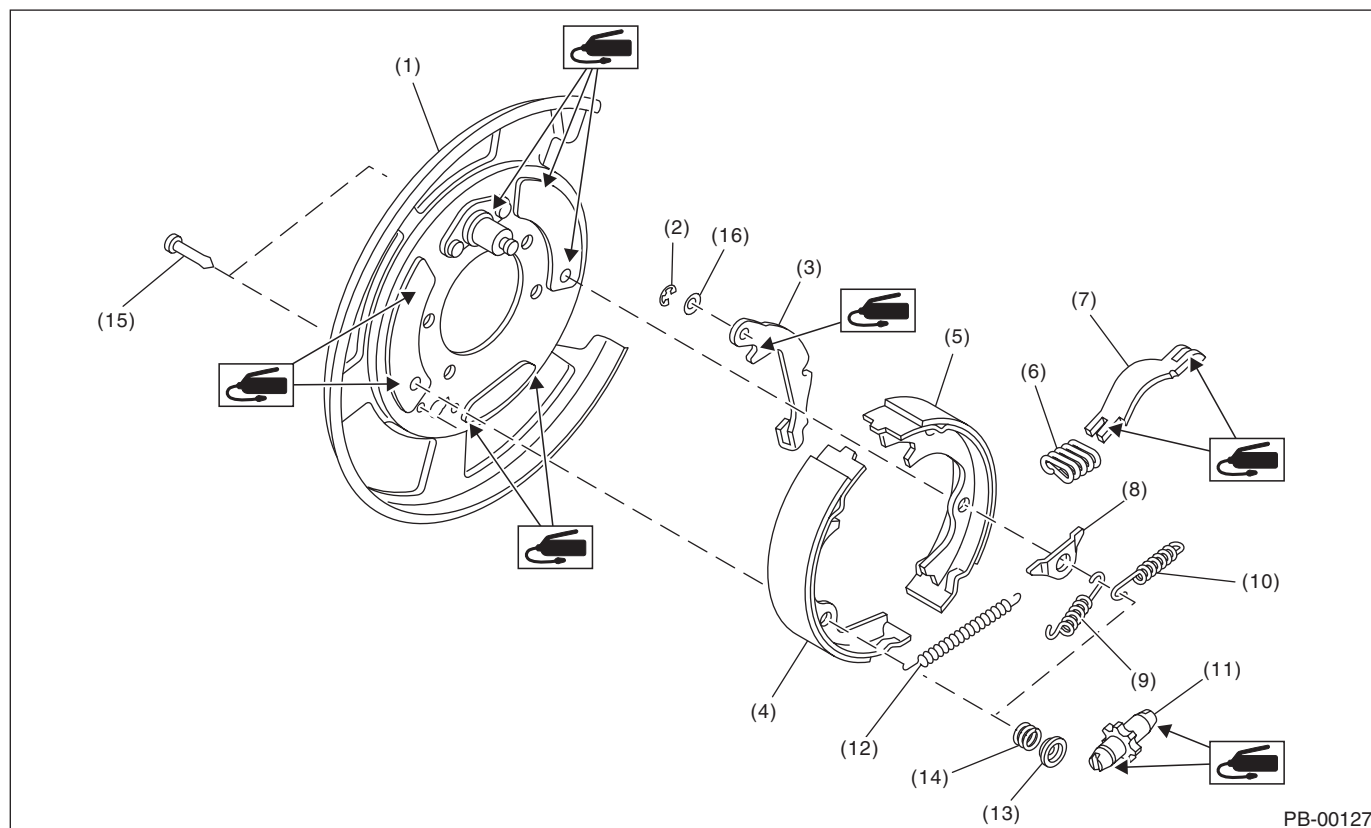
1. General Description

A: SPECIFICATION

Model		Rear drum brake	Rear disc brake
Type		Rear brake mechanical	Mechanical, drum in disc rear brakes
Effective drum diameter	mm (in)	254 (10)	190 (7.48)
Lining dimensions (Length × Width × Thickness)	mm (in)	243.8 × 40.0 × 4.5 (9.6 × 1.575 × 0.177)	165.8 × 30.0 × 2.8 (6.53 × 1.181 × 0.11)
Clearance adjustment		Automatic adjusting	Manual adjustment
Lever stroke	Notches/N (kgf, lbf)	7 — 8/200 (20.4, 45)	

B: COMPONENT

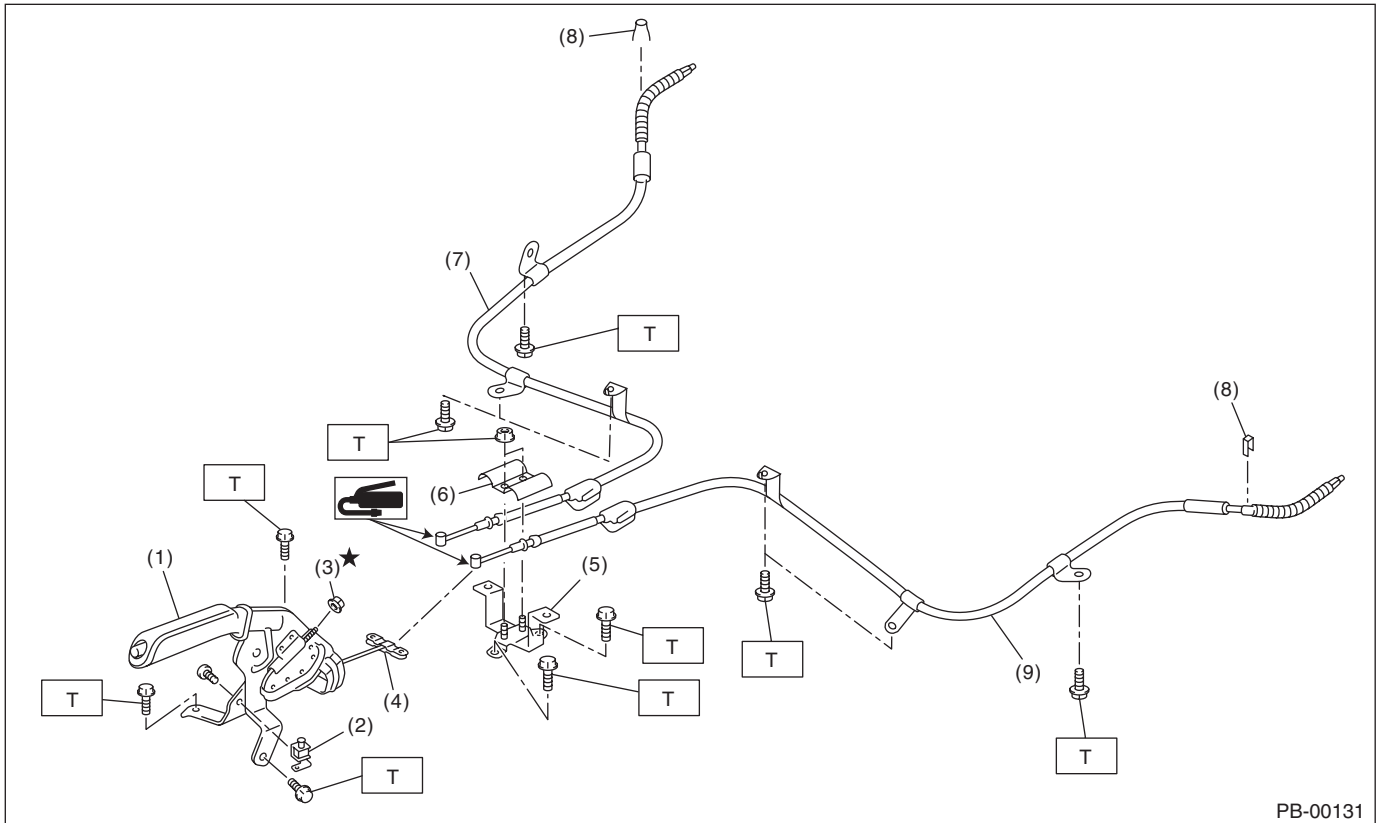
1. PARKING BRAKE (REAR DISC BRAKE)



PB-00127

- | | | |
|------------------------------------|------------------------------|----------------------------|
| (1) Back plate | (7) Strut | (12) Adjusting spring |
| (2) Retainer | (8) Shoe guide plate | (13) Shoe hold-down cup |
| (3) Lever | (9) Primary return spring | (14) Shoe hold-down spring |
| (4) Parking brake shoe (Primary) | (10) Secondary return spring | (15) Shoe hold-down pin |
| (5) Parking brake shoe (Secondary) | (11) Adjuster | (16) Wave washer |
| (6) Strut spring | | |

2. PARKING BRAKE LEVER & CABLE



- (1) Parking brake lever
- (2) Parking brake switch
- (3) Adjusting nut (self-locking nut)
- (4) Equalizer

- (5) Bracket
- (6) Clamp
- (7) Parking brake cable RH
- (8) Clamp

- (9) Parking brake cable LH

Tightening torque: N·m (kgf-m, ft-lb)

T: 18 (1.8, 13.3)

C: CAUTION

- Wear appropriate work clothing, including a cap, protective goggles and protective shoes when performing any work.
- Before removal, installation or disassembly, be sure to clarify the failure. Avoid unnecessary removal, installation, disassembly and replacement.
- Vehicle components are extremely hot after driving. Be wary of receiving burns from heated parts.
- Use SUBARU genuine grease etc. or equivalent. Do not mix grease etc. of different grades or manufacturers.
- Be sure to tighten fasteners including bolts and nuts to the specified torque.
- Place shop jacks or rigid racks at the specified points.
- Make sure grease does not come into contact with the parking shoes.