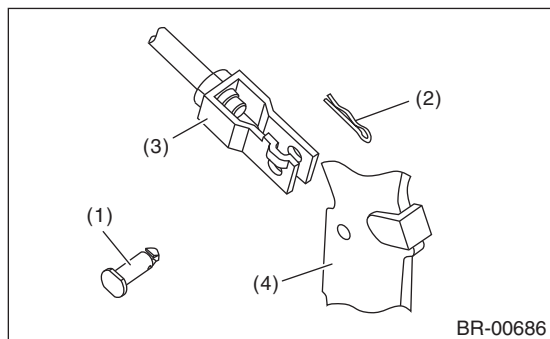


17.Brake Pedal

A: REMOVAL

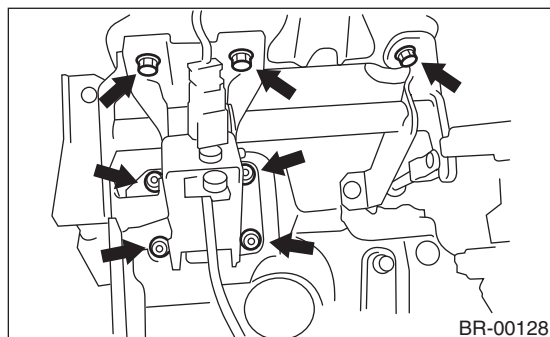
1. MT MODEL

- 1) Remove the steering column. <Ref. to PS-15, REMOVAL, Tilt Steering Column.>
- 2) Disconnect the connector from clutch switch.
- 3) Disconnect the connector from stop light switch.
- 4) Remove the stop light switch. <Ref. to BR-44, REMOVAL, Stop Light Switch.>
- 5) Remove the clevis pin which secures the pedal and operating rod.



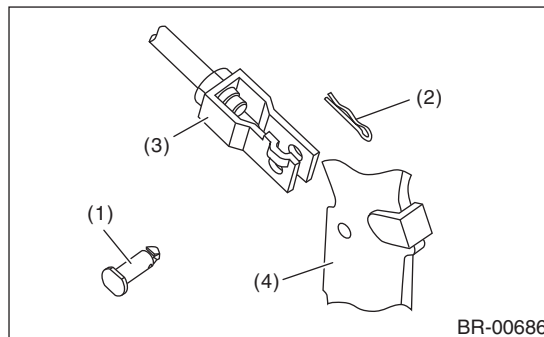
- (1) Clevis pin
- (2) Snap pin
- (3) Operating rod
- (4) Brake pedal

- 6) Remove the nut which secures the clutch master cylinder.
- 7) Remove the bolt and nut which secure the pedal bracket.



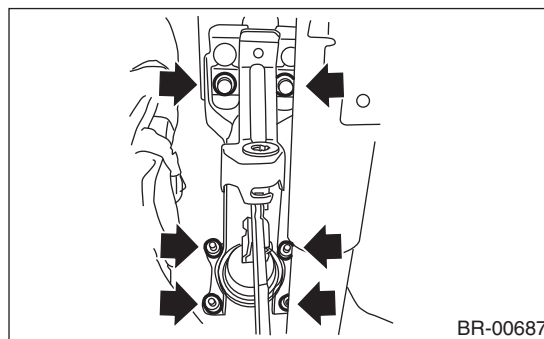
2. AT MODEL

- 1) Remove the steering column. <Ref. to PS-15, REMOVAL, Tilt Steering Column.>
- 2) Disconnect the connector from stop light switch.
- 3) Remove the stop light switch. <Ref. to BR-44, REMOVAL, Stop Light Switch.>
- 4) Remove the clevis pin which secures the brake pedal and operating rod.



- (1) Clevis pin
- (2) Snap pin
- (3) Operating rod
- (4) Brake pedal

- 5) Remove the bolt and nut which secure the brake pedal bracket.



B: INSTALLATION

CAUTION:

- Install the stop light switch according the following procedure.
- Do not install the stop light switch before step 2). Installing the stop light switch before step 2) may result in the switch falling off, remaining illuminated constantly, or an illumination fault.

1) Install the bolt and nut which secure the brake pedal bracket.

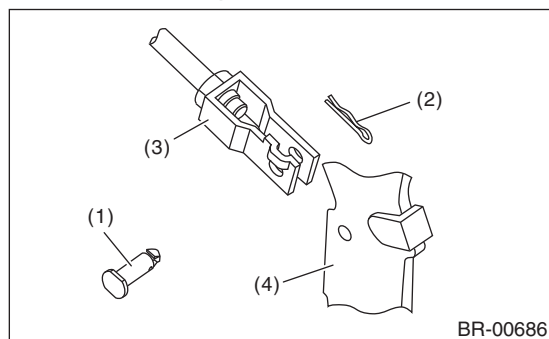
Tightening torque:

18 N·m (1.8 kgf-m, 13.3 ft-lb)

2) Install clevis pin and snap pin which secure the operating rod to the brake pedal.

NOTE:

- Replace with a new clevis pin.
- Apply a thin coat of NIGTIGHT LYW No. 2 grease to the clevis pin.



- (1) Clevis pin
- (2) Snap pin
- (3) Operating rod
- (4) Brake pedal

3) Install the stop light switch. <Ref. to BR-44, INSTALLATION, Stop Light Switch.>

4) Check the brake pedal after installation. <Ref. to BR-43, INSPECTION, Brake Pedal.>

C: INSPECTION

1) Move the brake pedal pads in a horizontal direction with a force of approx. 10 N (1 kgf, 2 lbf), and check that the pedal deflection is in the range of specifications.

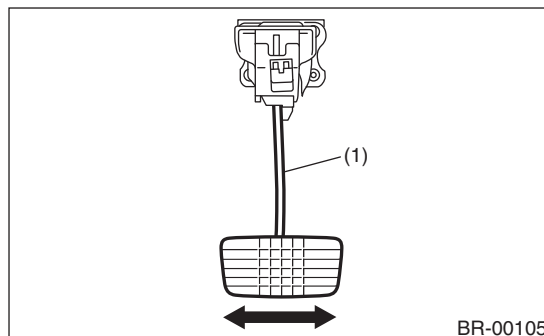
CAUTION:

If excessive deflection is noted, replace with a new bushing.

Deflection of brake pedal:

Limit

5.0 mm (0.197 in) or less



- (1) Brake pedal

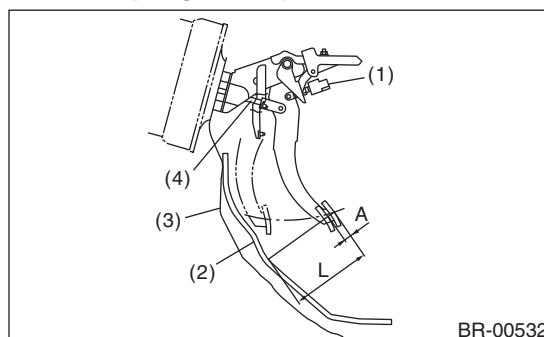
2) Check the position of the pedal pad.

Pedal height L:

150 — 160 mm (5.91 — 6.29 in)

Brake pedal free play A:

0.5 — 2 mm (0.020 — 0.079 in) [When pulling the brake pedal upward with a force of less than 10 N (1 kgf, 2 lbf).]



- (1) Stop light switch
- (2) Mat
- (3) Toe board
- (4) Brake booster operating rod

3) If out of specification, perform the procedures below to adjust.

- (1) Remove the stop light switch. <Ref. to BR-44, REMOVAL, Stop Light Switch.>
- (2) Loosen the lock nut of the brake booster operating rod, and rotate the rod to adjust the pedal height L to be within the specification.
- (3) Tighten the lock nut.

Tightening torque:

22 N·m (2.2 kgf-m, 16.2 ft-lb)

- (4) Install the stop light switch. <Ref. to BR-44, INSTALLATION, Stop Light Switch.>