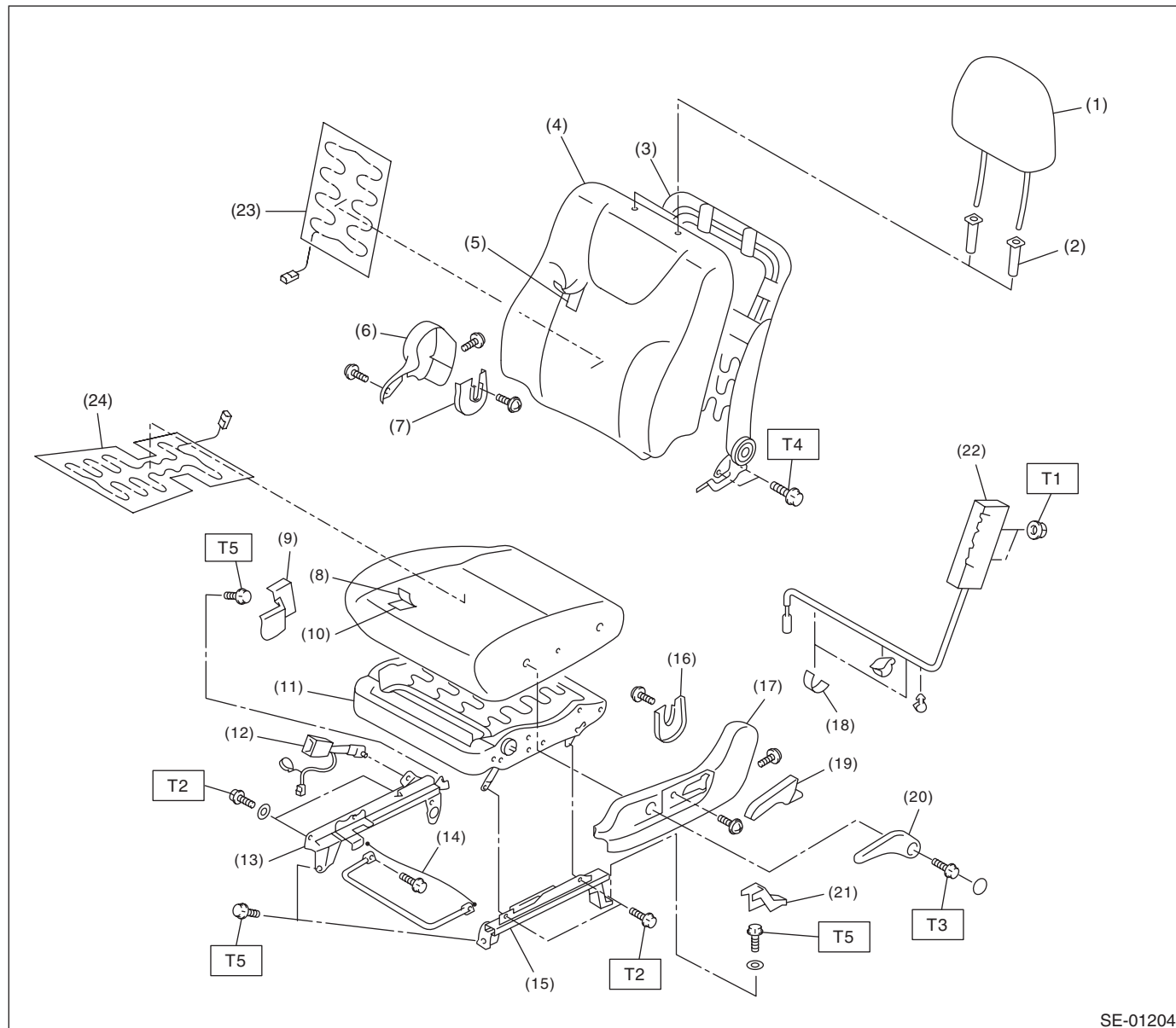


1. General Description

A: COMPONENT

1. FRONT SEAT LH

- Normal type seat



SE-01204

(1) Headrest ASSY	(12) Inner seat belt ASSY	(22) Side airbag module
(2) Headrest lock bushing	(13) Inner slide rail	(23) Seat heater module (backrest)
(3) Backrest frame ASSY	(14) Connecting cable	(24) Seat heater module (seat cushion)
(4) Backrest cover	(15) Outer slide rail	
(5) Backrest pad	(16) Seat hinge inner cover LH	
(6) Seat side cover inside	(17) Seat side cover outside	
(7) Seat hinge inner cover RH	(18) Tape	
(8) Seat cushion cover	(19) Reclining lever	
(9) Rear bolt cover inside	(20) Lifter lever	
(10) Seat cushion pad	(21) Rear bolt cover outside	
(11) Seat cushion frame ASSY		

Tightening torque: N·m (kgf-m, ft-lb)

T1: 6 (0.61, 4.4)

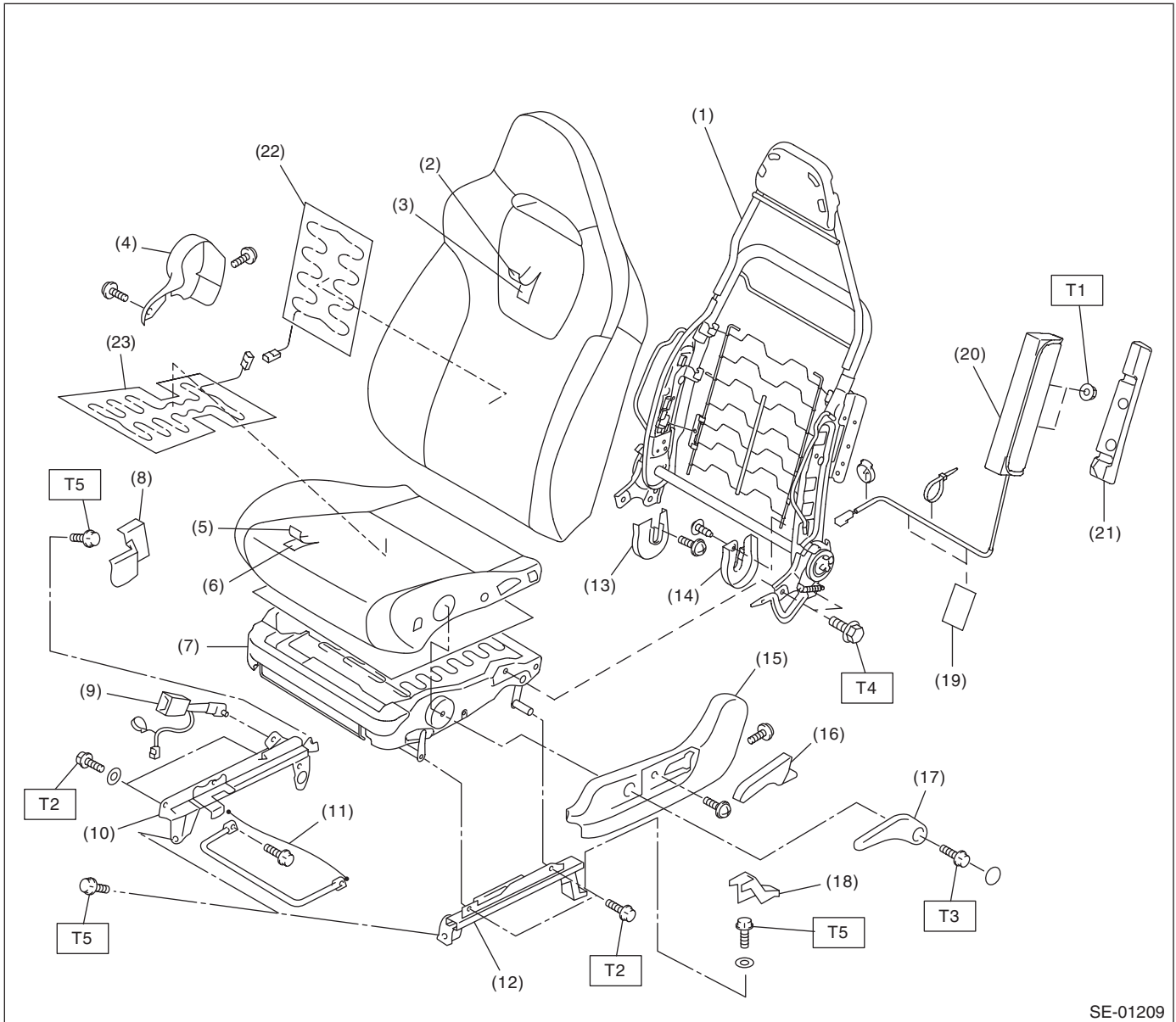
T2: 9.8 (1.0, 7.2)

T3: 17.6 (1.79, 13.0)

T4: 52 (5.3, 38.4)

T5: 53 (5.4, 39.1)

- Bucket type seat



SE-01209

(1) Backrest frame ASSY	(11) Connecting cable	(21) Pad
(2) Backrest cover	(12) Slide rail outside	(22) Seat heater module (backrest)
(3) Backrest pad	(13) Seat hinge inner cover RH	(23) Seat heater module (seat cushion)
(4) Seat side cover inside	(14) Seat hinge inner cover LH	
(5) Seat cushion cover	(15) Seat side cover outside	
(6) Seat cushion pad	(16) Reclining lever cover	
(7) Seat cushion frame ASSY	(17) Lifter lever	
(8) Rear bolt cover inside	(18) Rear bolt cover outside	
(9) Inner seat belt ASSY	(19) Tape	
(10) Slide rail inside	(20) Side airbag module	

Tightening torque: N·m (kgf·m, ft·lb)

T1: 6 (0.61, 4.4)

T2: 9.8 (1.0, 7.2)

T3: 17.6 (1.79, 13.0)

T4: 52 (5.3, 38.4)

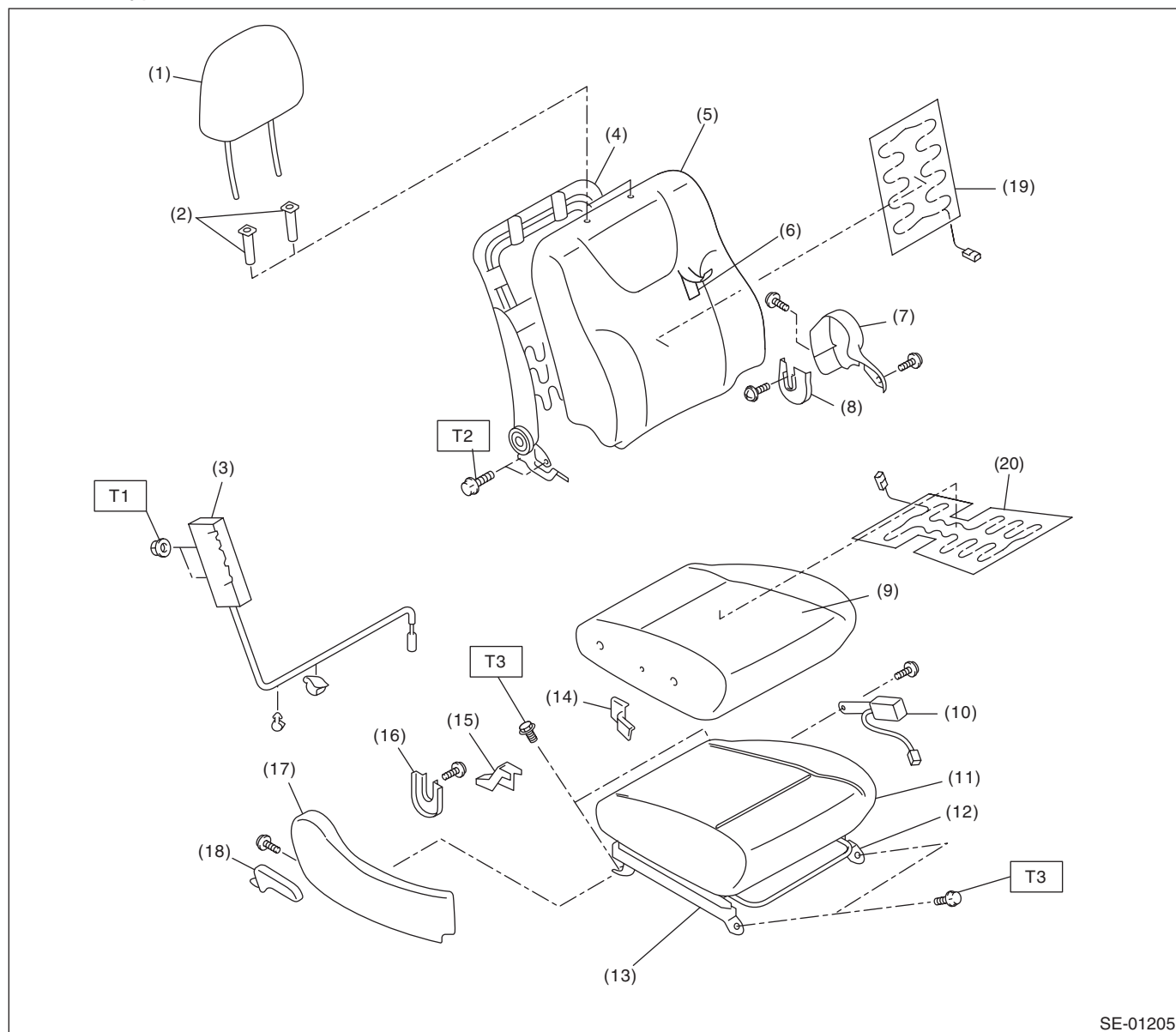
T5: 53 (5.4, 39.1)

General Description

SEATS

2. FRONT SEAT RH

- Normal type seat



SE-01205

(1) Headrest ASSY	(10) Inner seat belt ASSY	(19) Seat heater module (backrest)
(2) Headrest lock bushing	(11) Seat cushion pad and frame ASSY	(20) Seat heater module (seat cushion)
(3) Side airbag module	(12) Inner slide rail	
(4) Backrest frame ASSY	(13) Outer slide rail	
(5) Backrest cover	(14) Rear bolt cover inside	
(6) Backrest pad	(15) Rear bolt cover outside	
(7) Seat side cover inside	(16) Hinge inner cover RH	
(8) Hinge inner cover LH	(17) Seat side cover outside	
(9) Seat cushion cover	(18) Reclining lever	

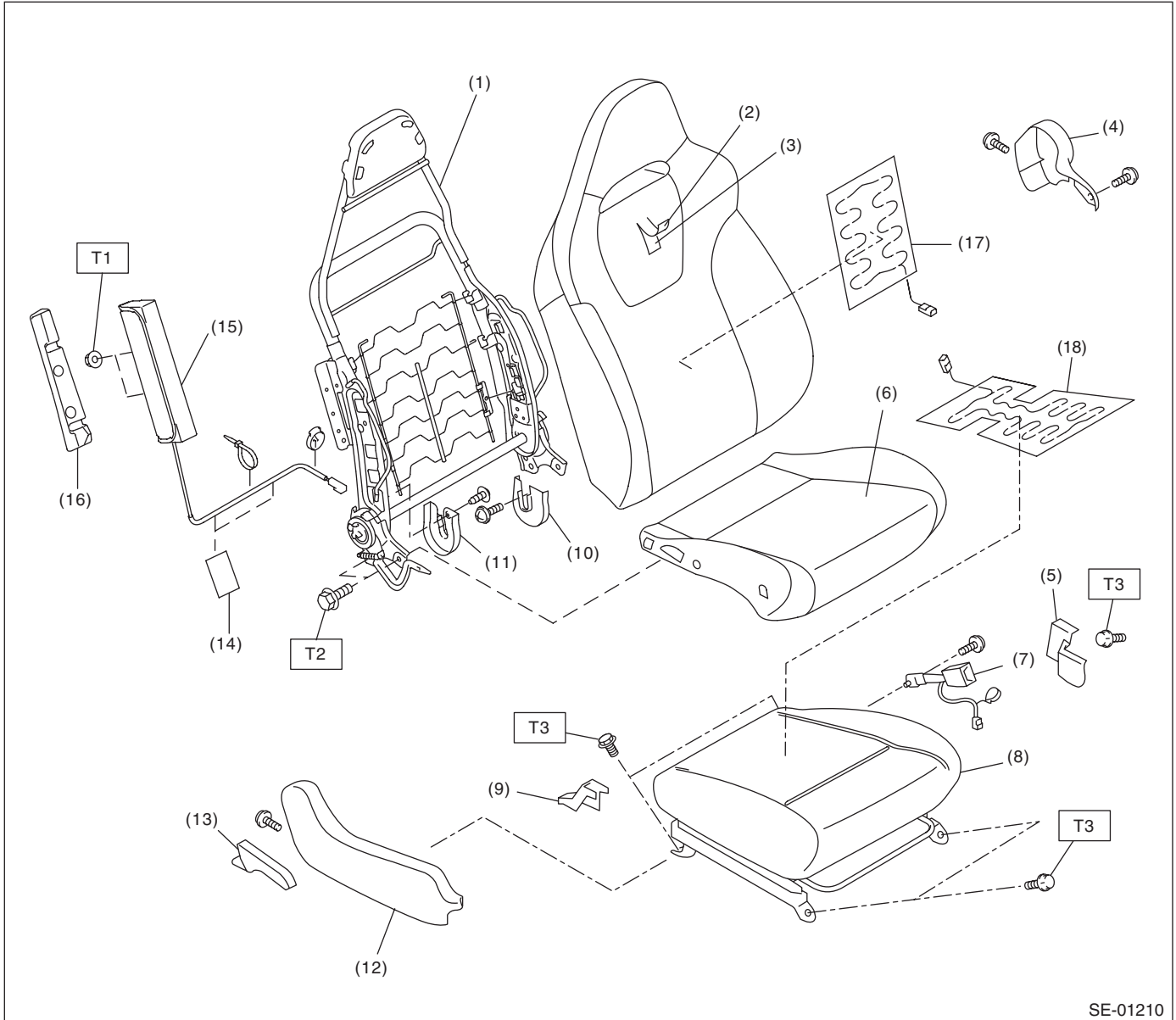
Tightening torque: N·m (kgf-m, ft-lb)

T1: 6 (0.61, 4.4)

T2: 52 (5.3, 38.4)

T3: 53 (5.4, 39.1)

- Bucket type seat



SE-01210

- (1) Backrest frame ASSY
- (2) Backrest cover
- (3) Backrest pad
- (4) Seat side cover inside
- (5) Rear bolt cover inside
- (6) Seat cushion cover
- (7) Inner seat belt ASSY
- (8) Seat cushion pad and frame ASSY

- (9) Rear bolt cover outside
- (10) Hinge inner cover LH
- (11) Hinge inner cover RH
- (12) Seat side cover outside
- (13) Reclining lever
- (14) Tape
- (15) Side airbag module
- (16) Pad

- (17) Seat heater module (backrest)
- (18) Seat heater module (seat cushion)

Tightening torque: N·m (kgf-m, ft-lb)

T1: 6 (0.61, 4.4)

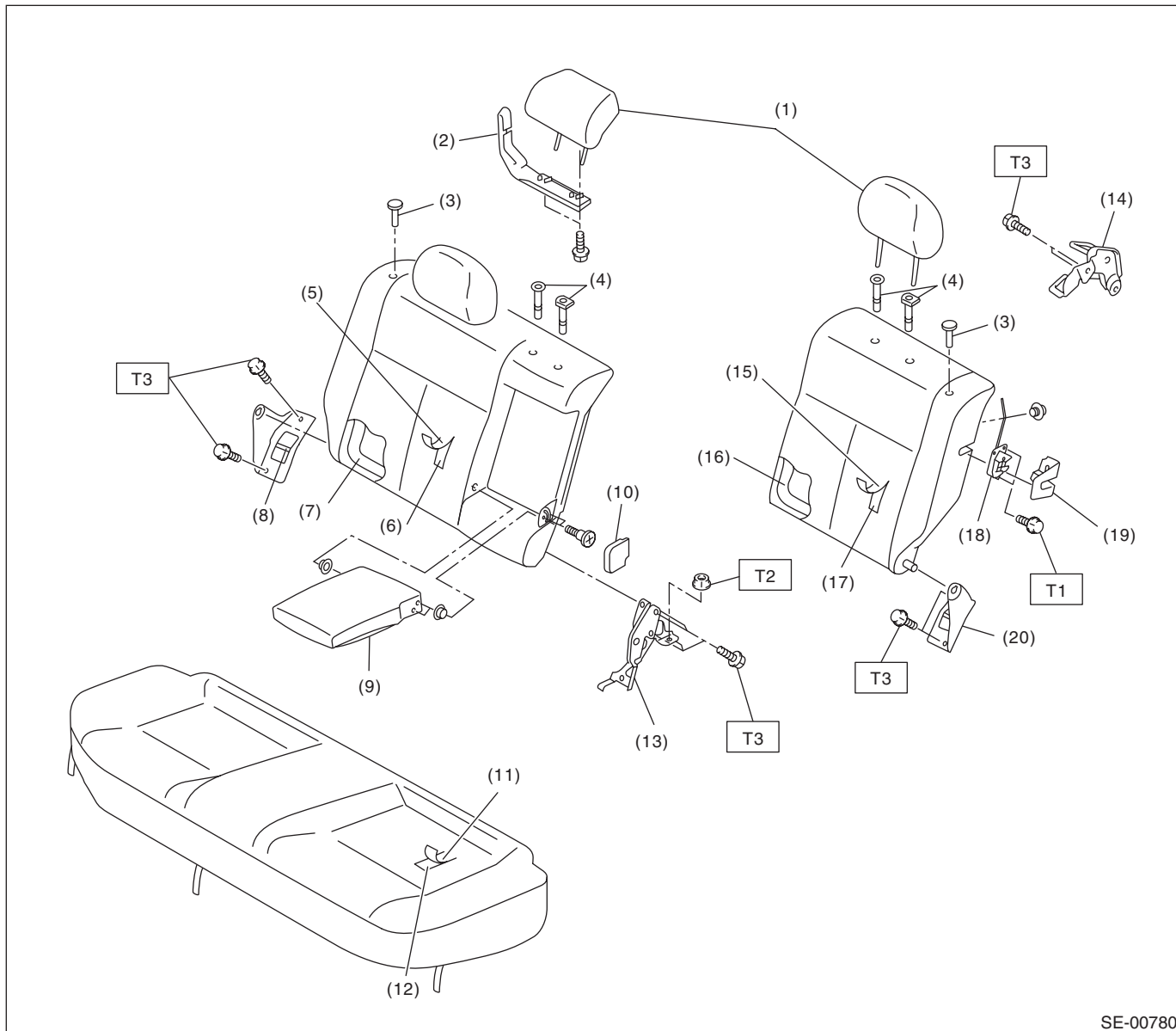
T2: 52 (5.3, 38.4)

T3: 53 (5.4, 39.1)

General Description

SEATS

3. REAR SEAT



SE-00780

- | | | |
|---|--------------------------|--------------------------------|
| (1) Headrest | (10) Armrest hinge cover | (19) Seat backrest latch cover |
| (2) Seat belt guide (5 door model only) | (11) Seat cushion cover | (20) Hinge ASSY LH |
| (3) Backrest knob (5 door model only) | (12) Seat cushion pad | |
| (4) Headrest bushing | (13) Hinge ASSY center | |
| (5) Backrest cover RH | (14) Striker | |
| (6) Backrest pad RH | (15) Backrest cover LH | |
| (7) Backrest frame RH | (16) Backrest frame LH | |
| (8) Hinge ASSY RH | (17) Backrest pad LH | |
| (9) Armrest ASSY | (18) Seat back latch | |

Tightening torque:N·m (kgf-m, ft-lb)

T1: 17.6 (1.79, 13.0)

T2: 24.5 (2.5, 18.1)

T3: 33 (3.36, 24.3)

B: CAUTION

- If the seat cushion cover is removed or replaced, make sure to perform passenger detection system adjustment after installing the seat to the vehicle. <Ref. to OD(diag)-14, SYSTEM CALIBRATION (REZEROING), OPERATION, Subaru Select Monitor.>

If system adjustment is not performed, the occupant detection system may not function properly.

- The passenger detection system (passenger seat only) control unit and the passenger detection sensor are fixed to the seat cushion frame. Never remove the passenger detection control unit or the pressure sensor from the seat cushion frame.
- Do not replace the seat cushion pad by itself. Always replace the seat cushion pad and frame assembly as a set. The seat cushion pad and cushion frame are adjusted as a set at the time of manufacture. If cushion pads and cushion frames are combined from those of other vehicles or other sets, the passenger detection system may not operate properly.
- If the seat cushion cover is removed, make sure to replace the hang wire on the seat cushion side with a new wire.
- When removing the front seat from a side airbag loaded vehicle, follow cautions given in the airbag section. <Ref. to AB-5, CAUTION, General Description.>

C: PREPARATION TOOL**1. GENERAL TOOL**

TOOL NAME	REMARKS
Long nose plier	Used for removing the hog ring.
Hog ring pliers	Used for installing the hog ring.
TORX® T50	Used for removing and installing the inner seat belt assembly.
Circuit tester	Used for checking voltage and continuity.