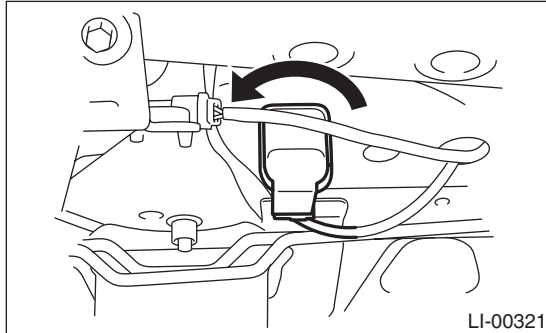


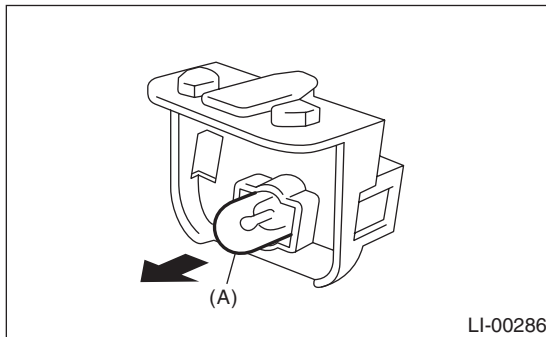
## 27.Trunk Room Light

### A: REMOVAL

- 1) Disconnect the ground cable from the battery.
- 2) Turn the trunk room light counterclockwise 60° to remove it and disconnect the harness connector.



- 3) Remove bulb (A).



### B: INSTALLATION

Install each part in the reverse order of removal.

### C: INSPECTION

#### 1. TRUNK ROOM LIGHT BULB

- 1) Visually check the bulb for blow out.
- 2) Check the bulb specification. <Ref. to LI-2, SPECIFICATION, General Description.>
- 3) Replace the bulb if it is found defective.