

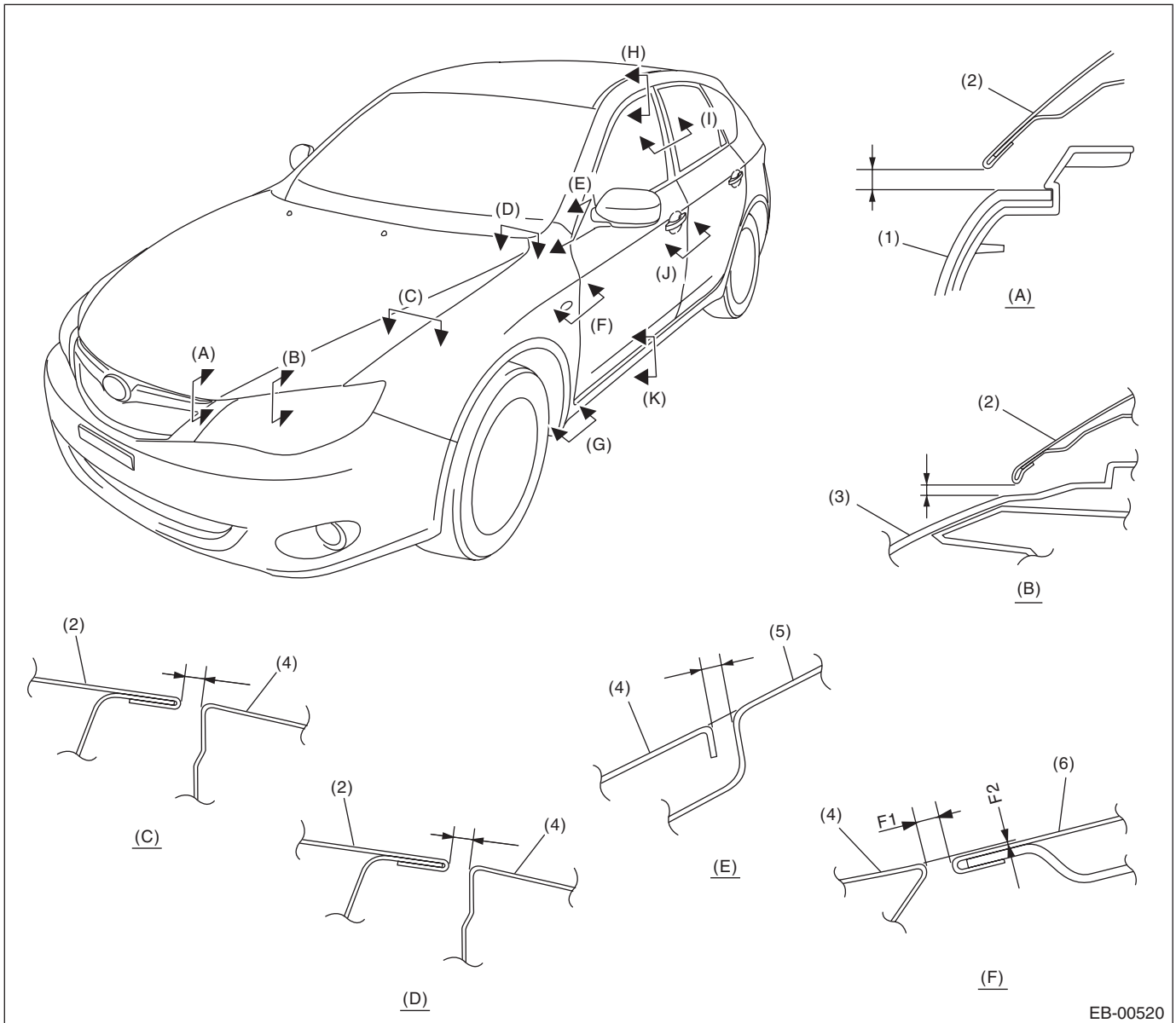
# General Description

## EXTERIOR BODY PANELS

### 1. General Description

#### A: SPECIFICATION

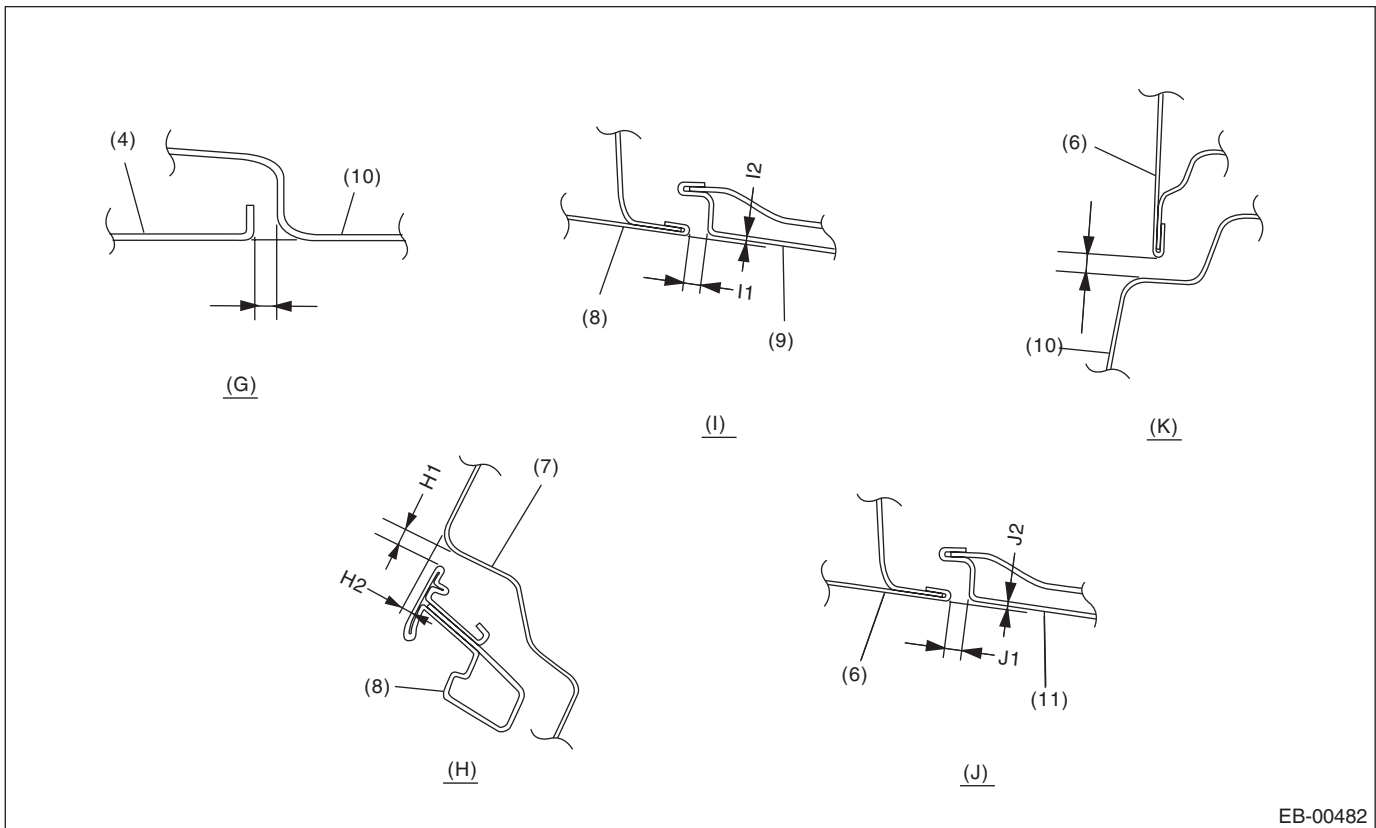
##### 1. FRONT



EB-00520

# General Description

## EXTERIOR BODY PANELS



EB-00482

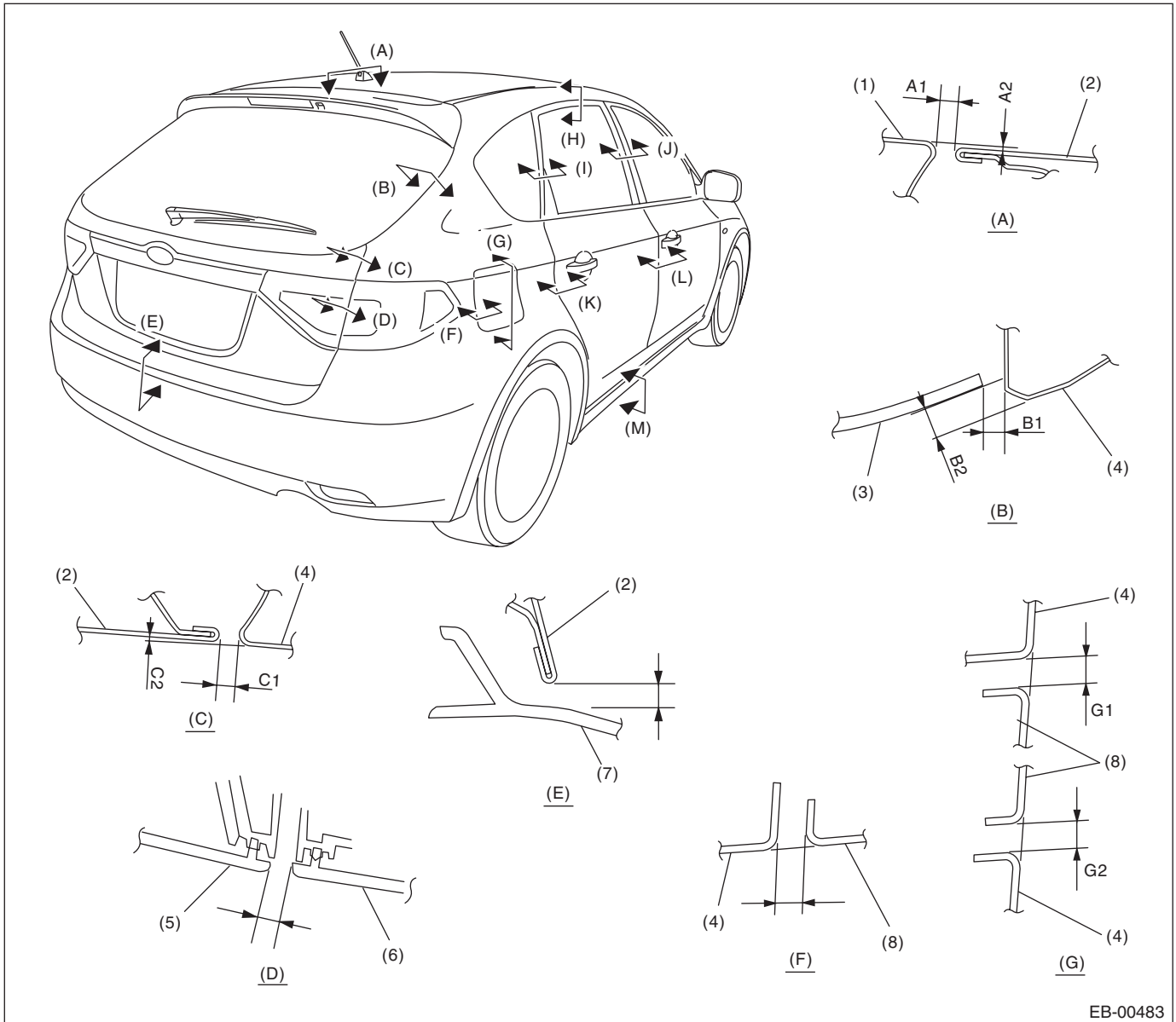
- |                        |                        |                      |
|------------------------|------------------------|----------------------|
| (1) Front grille       | (5) Front pillar panel | (9) Rear door sash   |
| (2) Front hood panel   | (6) Front door panel   | (10) Side sill panel |
| (3) Headlight          | (7) Roof panel         | (11) Rear door panel |
| (4) Front fender panel | (8) Front door sash    |                      |

Section	Part	Specification
(A)	Front hood panel to Front grille	6.0±1.0 mm (0.24±0.04 in)
(B)	Front hood panel to Headlight	6.0±1.0 mm (0.24±0.04 in)
(C)	Front hood panel to Front fender panel	3.5±1.0 mm (0.14±0.04 in)
(D)	Front hood panel to Front fender panel (Rear end only)	4.8+0.7, -1.0 mm (0.19+0.03, -0.04 in)
(E)	Front fender panel to Front pillar panel	3.0±1.0 mm (0.12±0.04 in)
(F)	Front fender panel to Front door panel	F1: 4.0±1.0 mm (0.16±0.04 in) F2: 0+1.0, -0.5 mm (0+0.04, -0.02 in) (Make sure that the fender panel is slightly outside of the door panel)
(G)	Front fender panel to Side sill panel	3.0±1.0 mm (0.12±0.04 in)
(H)	Roof panel to Front door sash	H1: 5.0±1.0 mm (0.20±0.04 in) H2: 3.8±1.0 mm (0.15±0.04 in)
(I)	Front door sash to Rear door sash	I1: 5.5±1.0 mm (0.22±0.04 in) I2: 0+1.0, -0.5 mm (0+0.04, -0.02 in) (Make sure that the front door side is slightly outside of the rear door side)
(J)	Front door panel to Rear door panel	J1: 4.5±1.0 mm (0.18±0.04 in) J2: 0+1.0, -0.5 mm (0+0.04, -0.02 in) (Make sure that the front door side is slightly outside of the rear door side)
(K)	Front door panel to Side sill panel	6.0±1.0 mm (0.24±0.04 in)

# General Description

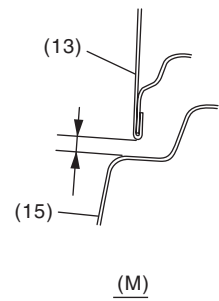
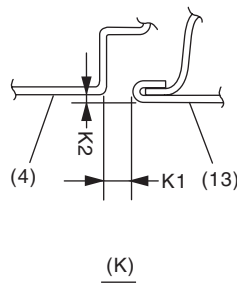
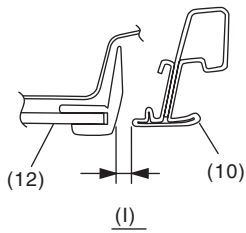
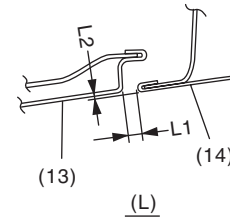
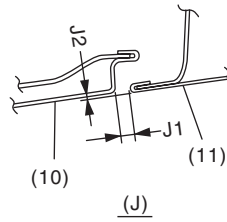
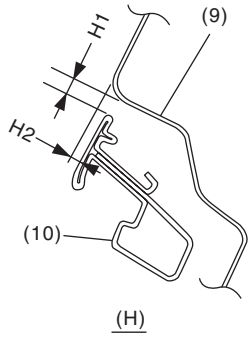
## EXTERIOR BODY PANELS

### 2. REAR (5 DOOR MODEL)



# General Description

## EXTERIOR BODY PANELS



EB-00484

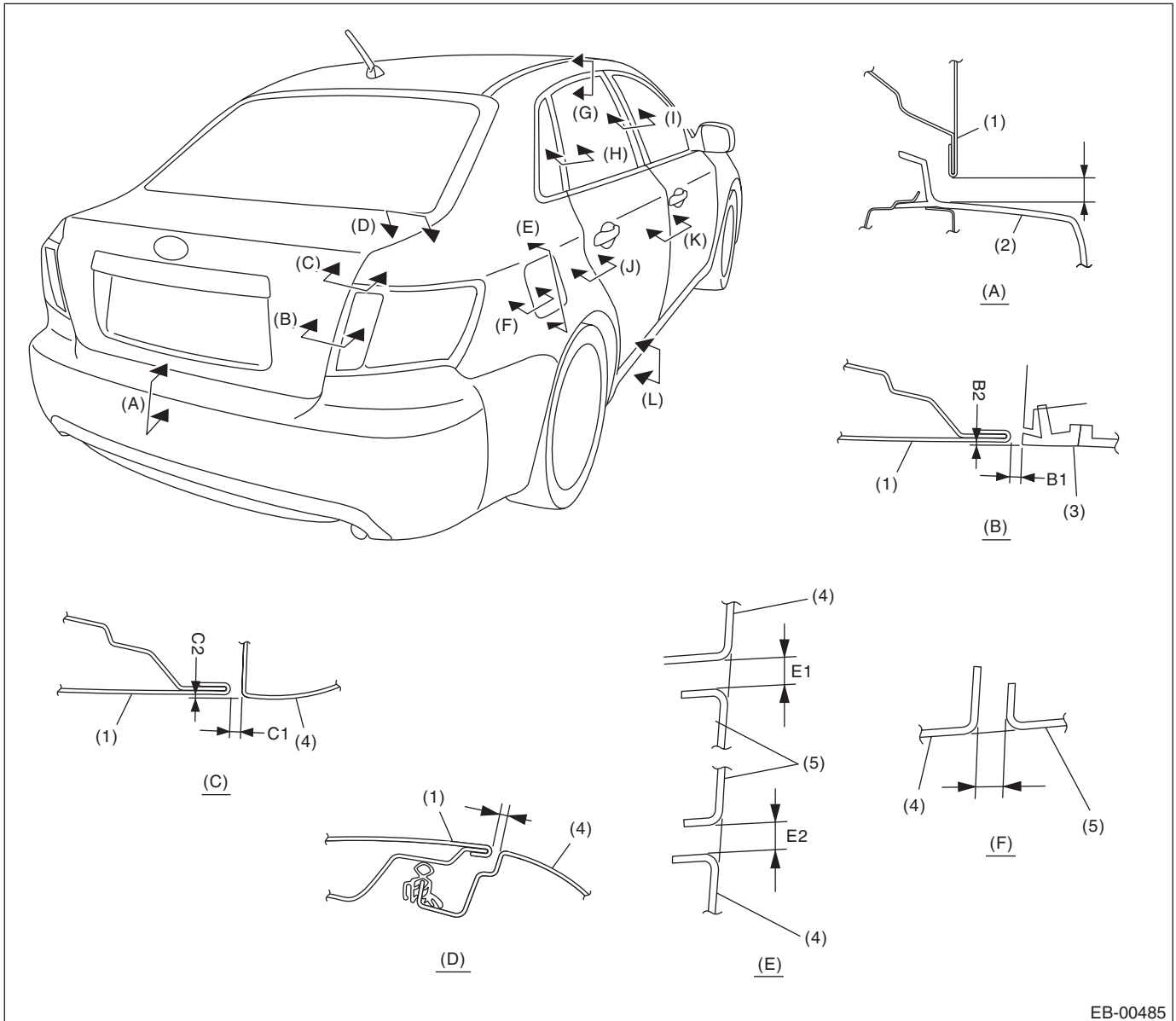
- |                         |                            |                         |
|-------------------------|----------------------------|-------------------------|
| (1) Roof panel          | (6) Rear combination light | (11) Front door sash    |
| (2) Rear gate panel     | (7) Rear bumper            | (12) Rear quarter glass |
| (3) Rear gate glass     | (8) Fuel filler lid        | (13) Rear door panel    |
| (4) Rear quarter panel  | (9) Roof panel             | (14) Front door panel   |
| (5) Rear finisher light | (10) Rear door sash        | (15) Side sill panel    |

## General Description

### EXTERIOR BODY PANELS

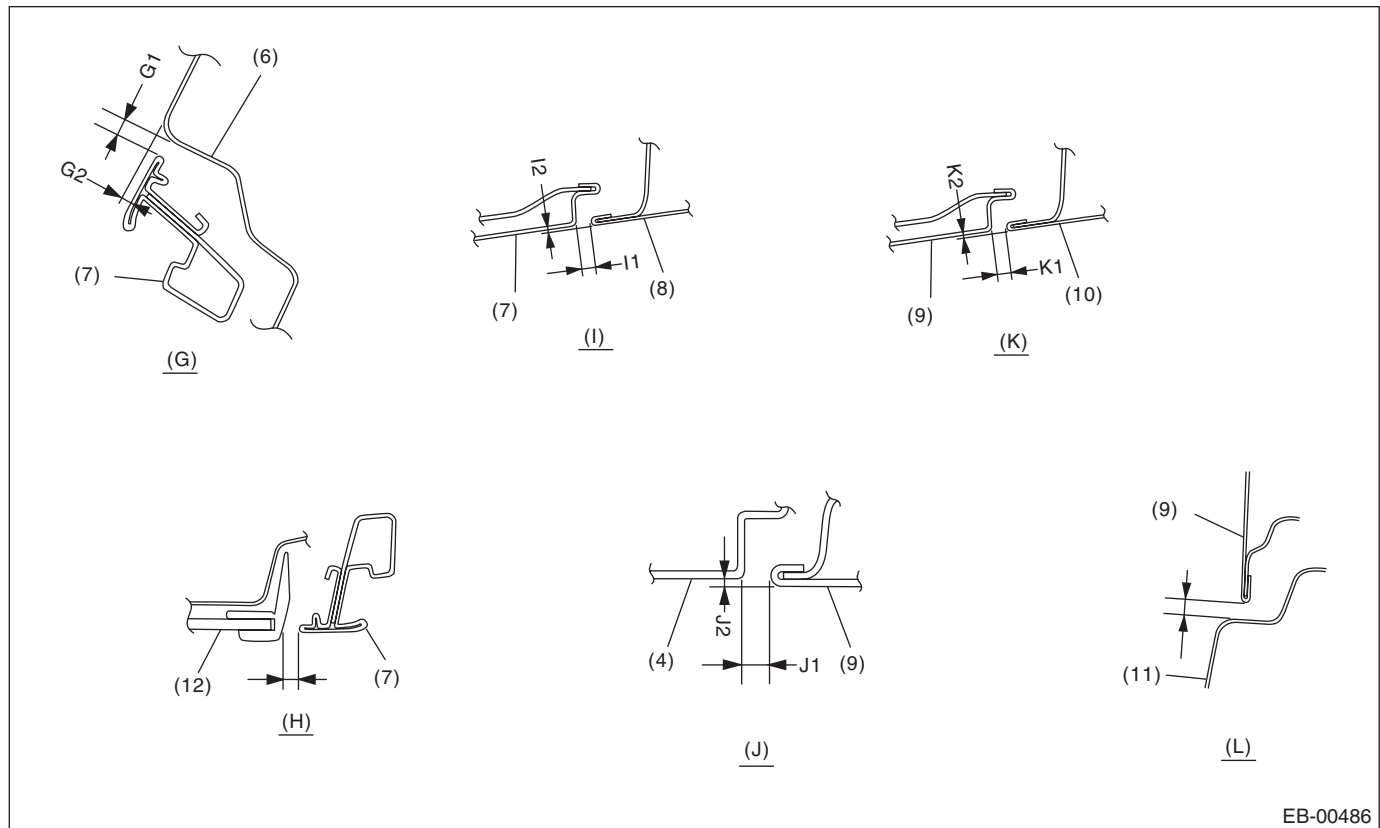
Section	Part	Specification
(A)	Roof panel to Rear gate panel	A1: 6.0+1.0, -0.5 mm (0.24+0.04-0.02 in) A2: 1.0±1.0 mm (0.04±0.04 in)
(B)	Rear gate glass to Rear quarter panel	B1: 5.0±1.5 mm (0.20±0.06 in) B2: 6.7±1.5 mm (0.26±0.06 in)
(C)	Rear gate panel to Rear quarter panel	C1: 4.6±1.0 mm (0.18±0.04 in) C2: 0.5±1.0 mm (0.02±0.04 in)
(D)	Rear combination light to Rear finisher light	5.0±1.0 mm (0.20±0.04 in)
(E)	Rear gate panel to Rear bumper	8.0±1.0 mm (0.31±0.04 in)
(F)	Rear quarter panel to Fuel filler lid	3.5±0.5 mm (0.14±0.02 in)
(G)	Rear quarter panel to Fuel filler lid	G1: 3.5±0.5 mm (0.14±0.02 in) G2: 4.0±0.5 mm (0.16±0.02 in)
(H)	Roof panel to Rear door sash	H1: 5.0±1.0 mm (0.20±0.04 in) H2: 3.8±1.0 mm (0.15±0.04 in)
(I)	Rear door sash to Rear quarter glass molding	7.0±1.0 mm (0.28±0.04 in)
(J)	Rear door sash to Front door sash	J1: 5.5±1.0 mm (0.22±0.04 in) J2: 0+1.0, -0.5 mm (0+0.04, -0.02 in) (Make sure that the front door side is slightly outside of the rear door side)
(K)	Rear door panel to Rear quarter panel	K1: 4.0±1.0 mm (0.16±0.04 in) K2: 0+1.0, -0.5 mm (0+0.04, -0.02 in) (Make sure that the rear door panel is slightly outside of the quarter panel)
(L)	Front door panel to Rear door panel	L1: 4.5±1.0 mm (0.18±0.04 in) L2: 0+1.0, -0.5 mm (0+0.04, -0.02 in) (Make sure that the front door side is slightly outside of the rear door side)
(M)	Rear door panel to Side sill panel	6.0±1.0 mm (0.24±0.04 in)

### 3. REAR (4 DOOR MODEL)



# General Description

## EXTERIOR BODY PANELS



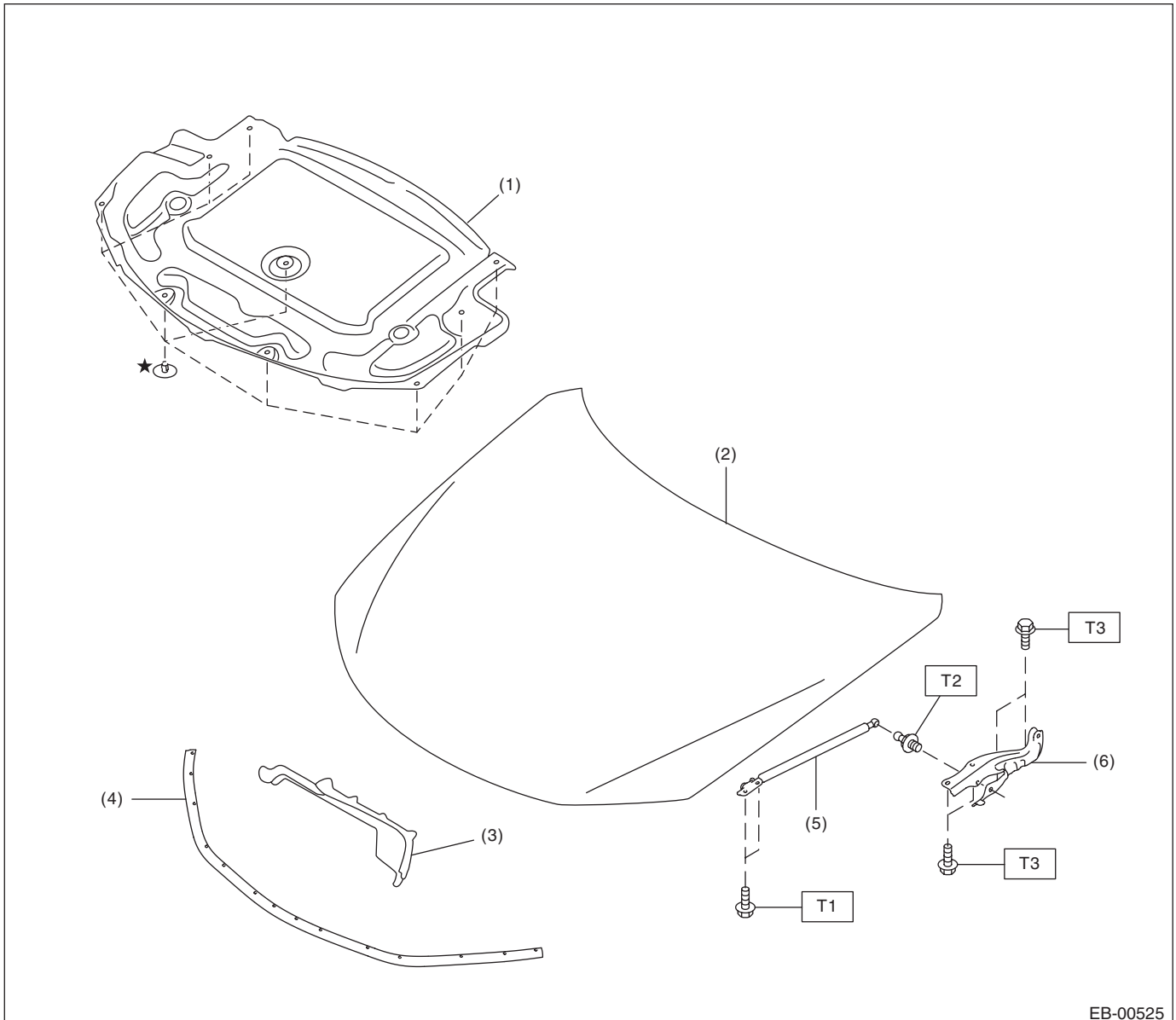
EB-00486

- |                            |                     |                         |
|----------------------------|---------------------|-------------------------|
| (1) Trunk panel            | (5) Fuel filler lid | (9) Rear door panel     |
| (2) Rear bumper            | (6) Roof panel      | (10) Front door panel   |
| (3) Rear combination light | (7) Rear door sash  | (11) Side sill panel    |
| (4) Rear quarter panel     | (8) Front door sash | (12) Rear quarter glass |

Section	Part	Specification
(A)	Trunk panel to Rear bumper face	9.0±1.0 mm (0.35±0.04 in)
(B)	Trunk panel to Rear combination light	B1: 3.5±1.0 mm (0.14±0.04 in) B2: 0.5±1.0 mm (0.02±0.04 in)
(C)	Trunk panel to Rear quarter panel	C1: 3.5±1.0 mm (0.14±0.04 in) C2: 0.5±1.0 mm (0.02±0.04 in)
(D)	Trunk panel to Rear quarter panel	3.5±1.0 mm (0.14±0.04 in)
(E)	Rear quarter panel to Fuel filler lid	E1: 3.5±0.5 mm (0.14±0.02 in) E2: 3.5±0.5 mm (0.14±0.02 in)
(F)	Rear quarter panel to Fuel filler lid	3.5±0.5 mm (0.14±0.02 in)
(G)	Roof panel to Rear door sash	G1: 5.0±1.0 mm (0.20±0.04 in) G2: 3.8±1.0 mm (0.15±0.04 in)
(H)	Rear door sash to Rear quarter glass	7.0±1.0 mm (0.28±0.04 in)
(I)	Rear door sash to Front door sash	I1: 5.5±1.0 mm (0.22±0.04 in) I2: 0+1.0, -0.5 mm (0+0.04, -0.02 in) (Make sure that the front door side is slightly outside of the rear door side)
(J)	Rear door panel to Rear quarter panel	J1: 4.0±1.0 mm (0.16±0.04 in) J2: 0+1.0, -0.5 mm (0+0.04, -0.02 in) (Make sure that the rear door panel is slightly outside of the quarter panel)
(K)	Front door panel to Rear door panel	K1: 4.5±1.0 mm (0.18±0.04 in) K2: 0+1.0, -0.5 mm (0+0.04, -0.02 in) (Make sure that the front door side is slightly outside of the rear door side)
(L)	Rear door panel to Side sill panel	6.0±1.0 mm (0.24±0.04 in)

## B: COMPONENT

### 1. FRONT HOOD



- (1) Insulator
- (2) Front hood panel
- (3) Seal (intake duct)
- (4) Seal (front panel)

- (5) Damper stay
- (6) Hinge

**Tightening torque: N·m (kgf-m, ft-lb)**

**T1: 7.5 (0.76, 5.5)**

**T2: 20 (2.04, 14.5)**

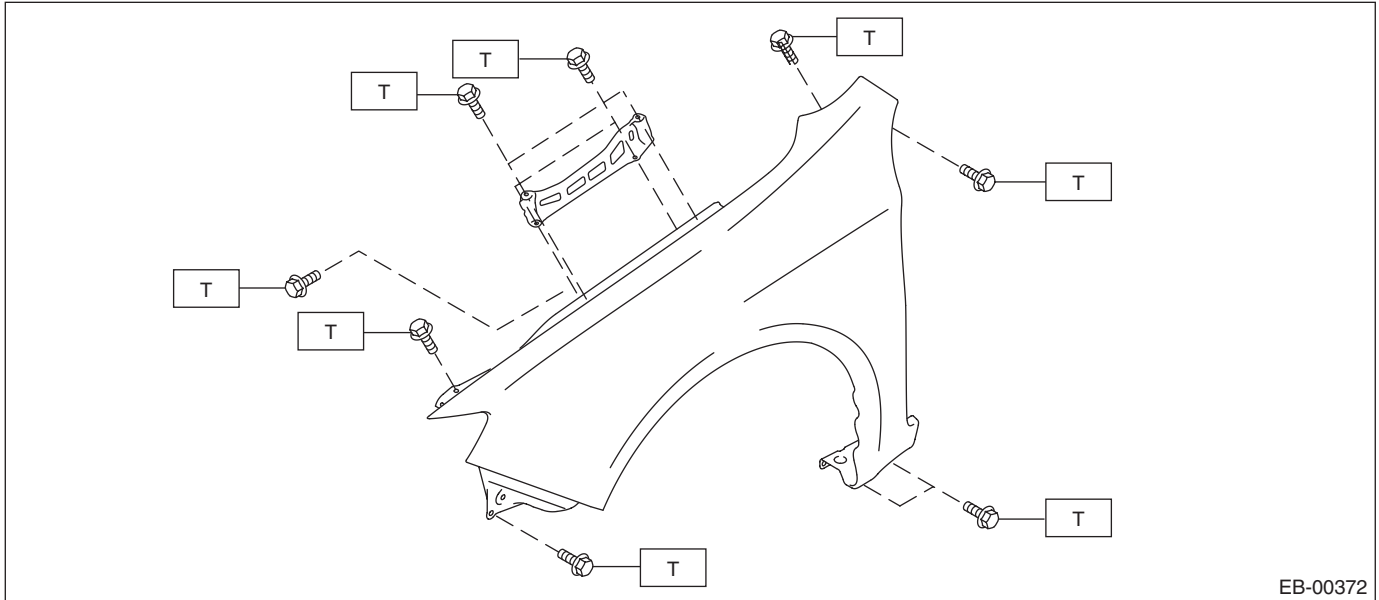
**T3: 25 (2.55, 18.4)**



# General Description

## EXTERIOR BODY PANELS

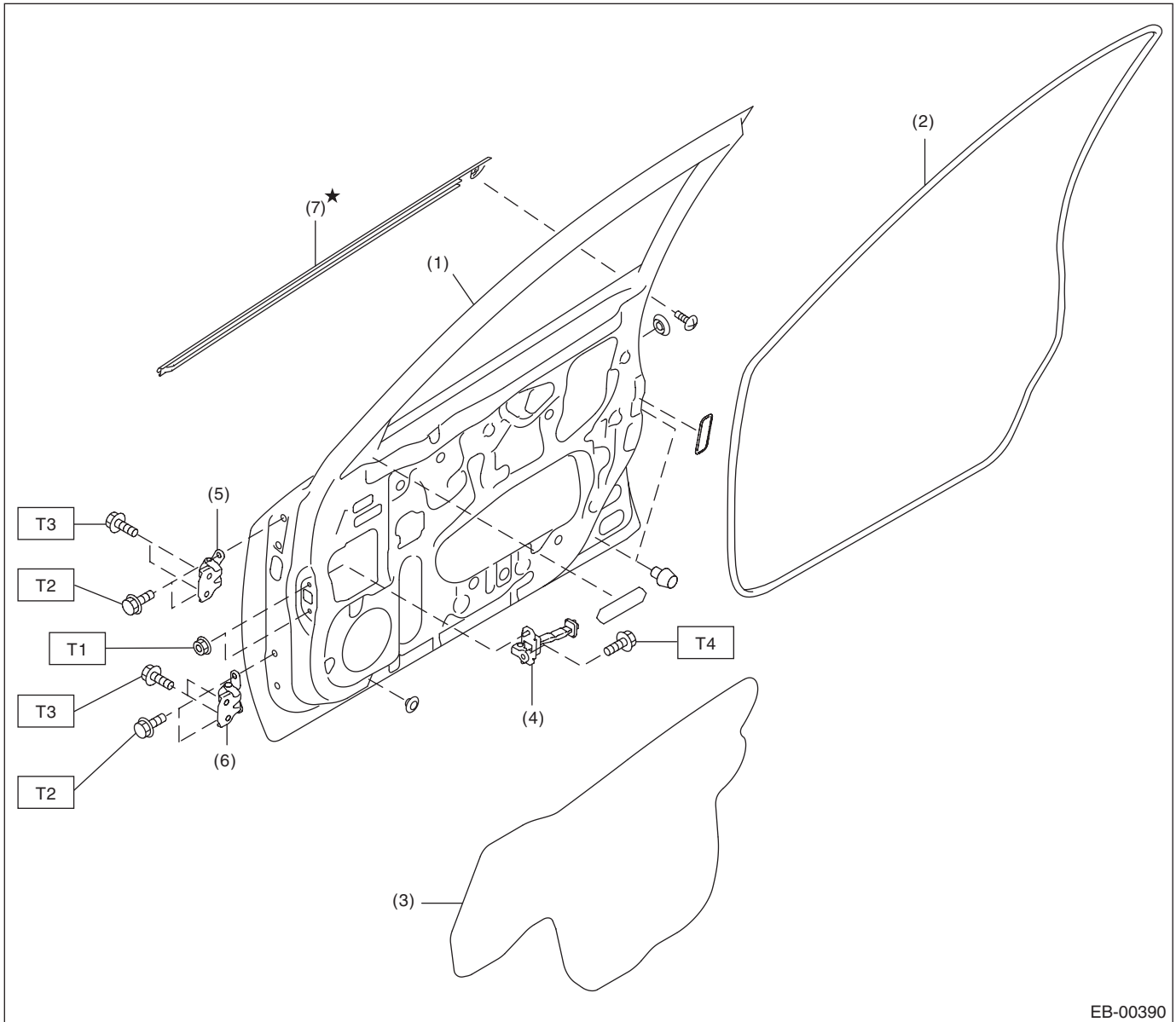
### 2. FRONT FENDER



***Tightening torque:N·m (kgf-m, ft-lb)***

***T: 7.5 (0.76 5.5)***

### 3. FRONT DOOR



EB-00390

- |                              |                                    |
|------------------------------|------------------------------------|
| (1) Front door panel         | (5) Upper hinge                    |
| (2) Front door weather strip | (6) Lower hinge                    |
| (3) Sealing cover            | (7) Front door weather strip outer |
| (4) Checker                  |                                    |

**Tightening torque: N·m (kgf-m, ft-lb)**

**T1: 7.5 (0.76, 5.5)**

**T2: 25 (2.55, 18.4)**

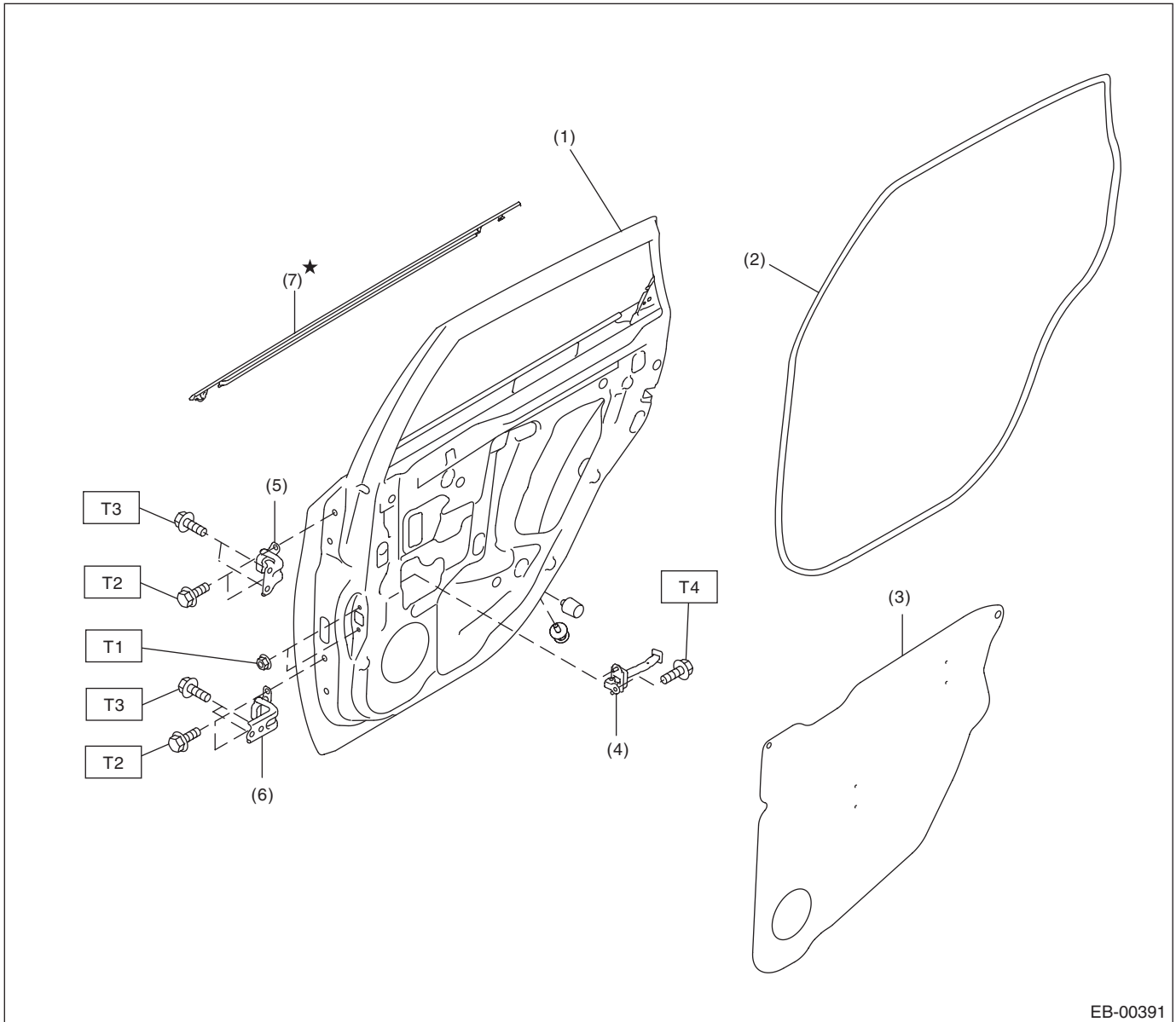
**T3: 30 (3.06, 22.1)**

**T4: 33 (3.36, 24.3)**

# General Description

## EXTERIOR BODY PANELS

### 4. REAR DOOR



EB-00391

- |                             |                                   |
|-----------------------------|-----------------------------------|
| (1) Rear door panel         | (5) Upper hinge                   |
| (2) Rear door weather strip | (6) Lower hinge                   |
| (3) Sealing cover           | (7) Rear door weather strip outer |
| (4) Checker                 |                                   |

**Tightening torque: N·m (kgf-m, ft-lb)**

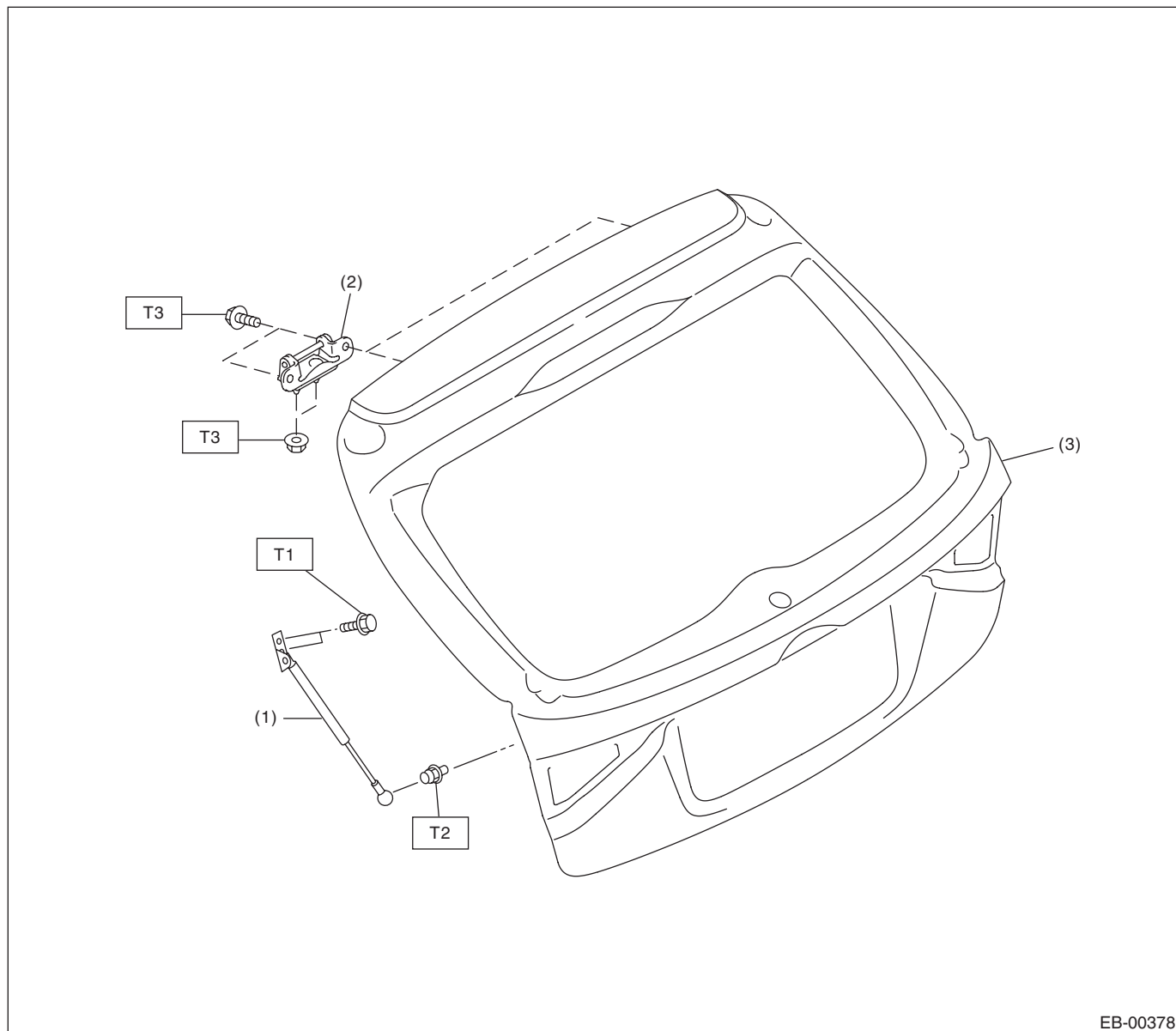
**T1: 7.5 (0.76, 5.5)**

**T2: 25 (2.55, 18.4)**

**T3: 30 (3.06, 22.1)**

**T4: 33 (3.36, 24.3)**

## 5. REAR GATE



EB-00378

(1) Rear gate damper stay

(3) Rear gate panel

(2) Hinge

**Tightening torque: N·m (kgf-m, ft-lb)**

**T1: 10 (1.02, 7.4)**

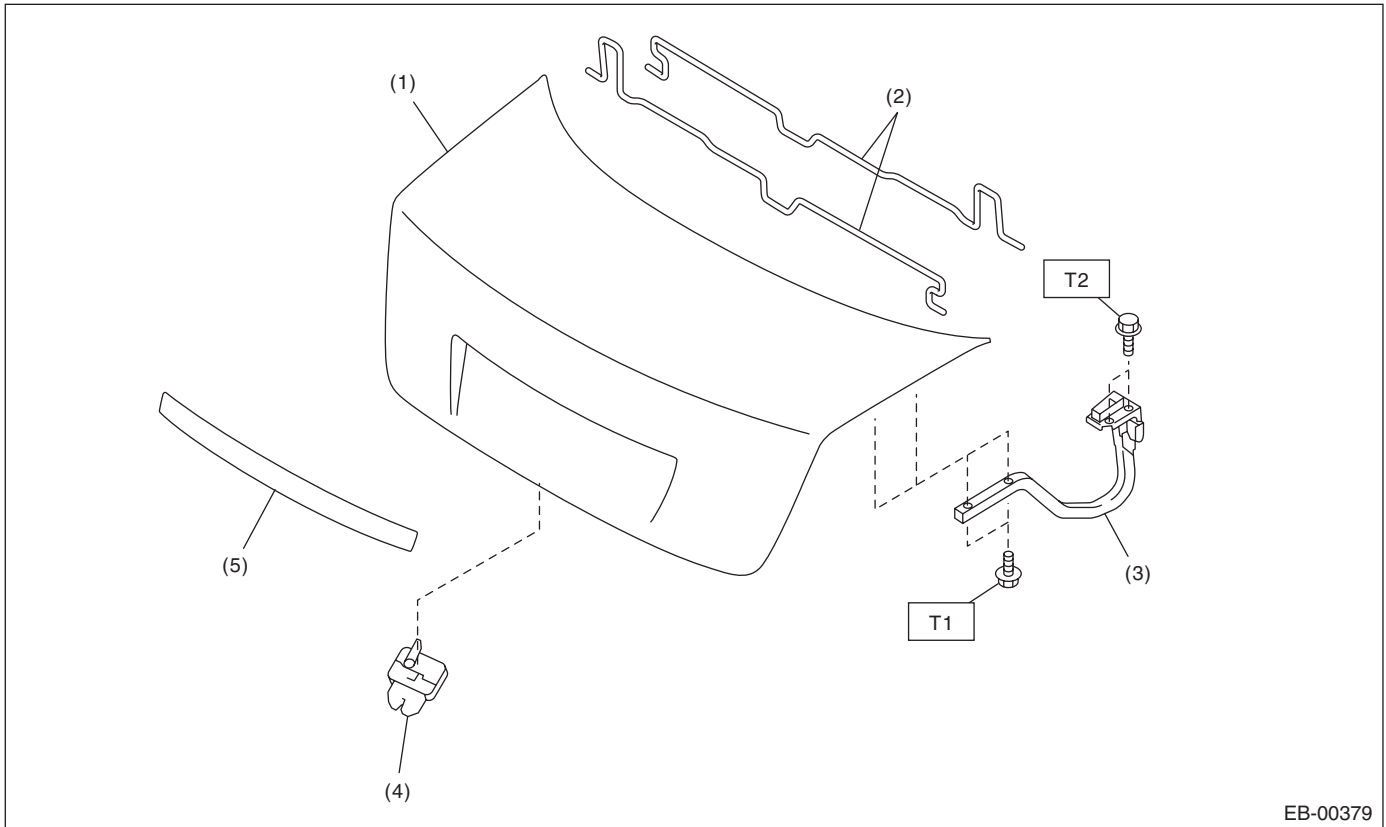
**T2: 20 (2.04, 14.8)**

**T3: 25 (2.55, 18.4)**

## General Description

### EXTERIOR BODY PANELS

#### 6. TRUNK LID PANEL



- |                        |                         |
|------------------------|-------------------------|
| (1) Trunk lid panel    | (4) Trunk lid lock ASSY |
| (2) Torsion bar        | (5) Trunk lid garnish   |
| (3) Trunk lid arm ASSY |                         |

**Tightening torque: N·m (kgf-m, ft-lb)**

**T1: 14 (1.43, 10.3)**

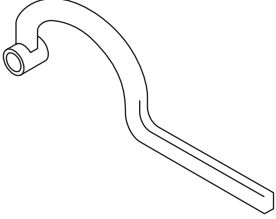
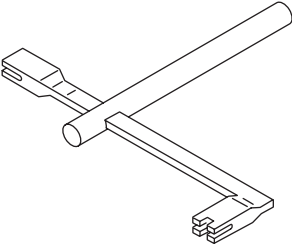
**T2: 18 (1.84, 13.3)**

#### C: CAUTION

Exterior body panels are heavy. When removing or installing, do not drop and damage the panels. Do not damage the panel painting surface.

## D: PREPARATION TOOL

### 1. SPECIAL TOOL

ILLUSTRATION	TOOL NUMBER	DESCRIPTION	REMARKS
 <p>ST-925610000</p>	925610000	WRENCH	Used for removing and installing door hinge.
 <p>ST-927780000</p>	927780000	REMOVER	Used for removing and installing the trunk torsion bar.

### 2. GENERAL TOOL

TOOL NAME	REMARKS
Support jack	Used for supporting door panel.
Clip remover	Used for removing various types of clips