

## General Description

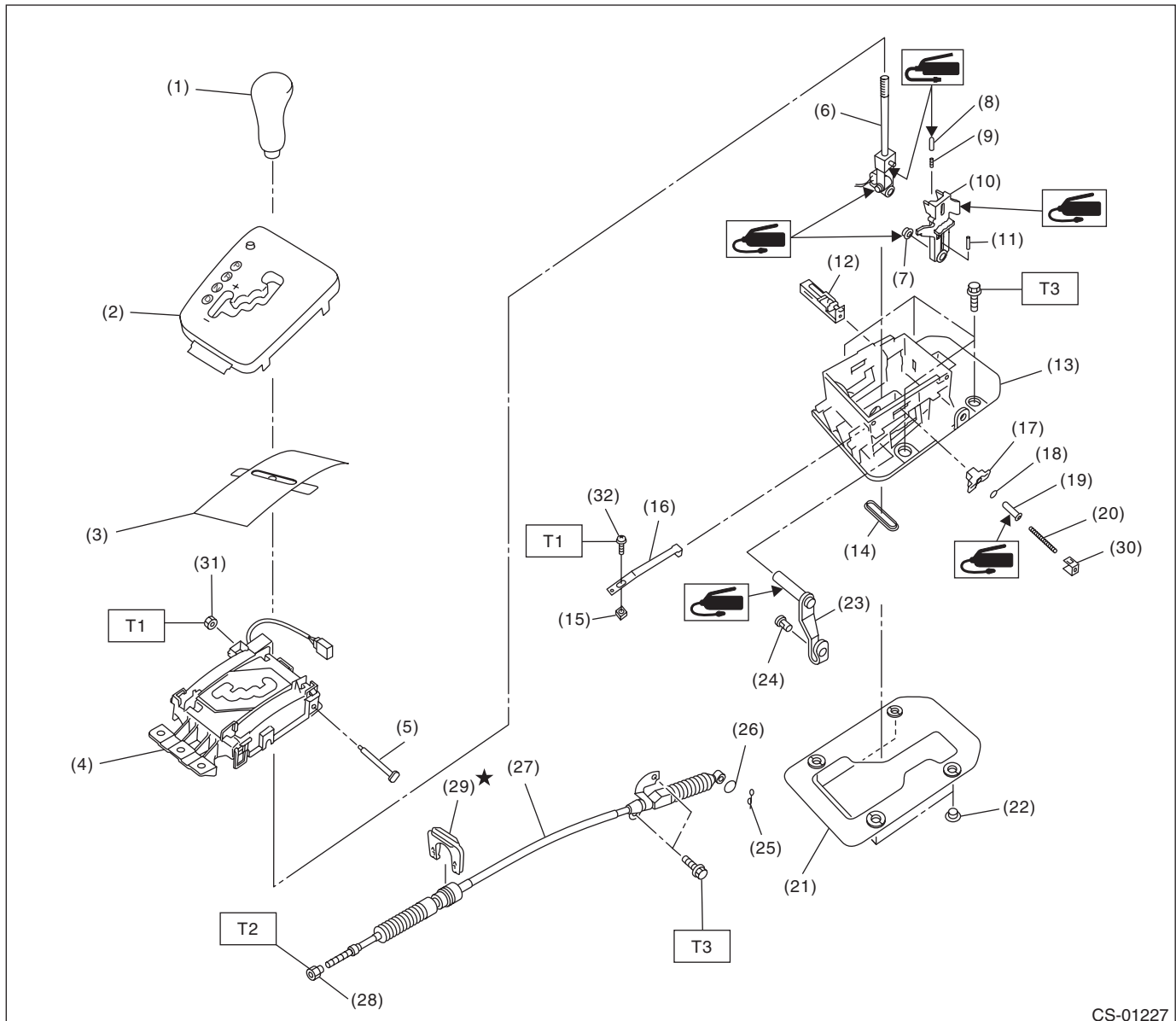
CONTROL SYSTEMS

---

### 1. General Description

#### A: SPECIFICATION

Item		Specifications
Swing torque of rod against lever	N (kgf, lb)	3.7 (0.38, 0.83) or less

**B: COMPONENT****1. AT SELECT LEVER**

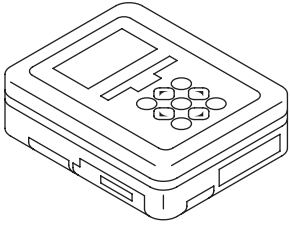
CS-01227

- |                               |                         |                       |
|-------------------------------|-------------------------|-----------------------|
| (1) Grip ASSY                 | (14) Grommet            | (27) Select cable     |
| (2) Indicator ASSY            | (15) Plate nut          | (28) Nut A            |
| (3) Blind                     | (16) Detent spring      | (29) Clamp            |
| (4) Plate guide COMPL         | (17) Bushing            | (30) Shift lock clamp |
| (5) Spacer bolt               | (18) Lock plate cushion | (31) Nut              |
| (6) Selector lever COMPL      | (19) Select lever rod   | (32) Flange screw     |
| (7) Bushing                   | (20) Spring A           |                       |
| (8) Rod detent                | (21) Gasket             |                       |
| (9) Spring detent             | (22) Spacer             |                       |
| (10) Bracket arm detent       | (23) Arm ASSY           |                       |
| (11) Spring pin               | (24) Connector pin      |                       |
| (12) Shift lock solenoid unit | (25) Snap pin           |                       |
| (13) Plate COMPL              | (26) Washer             |                       |

**Tightening torque: N·m (kgf·m, ft·lb)****T1: 2.2 (0.2, 1.6)****T2: 7.5 (0.8, 5.5)****T3: 18 (1.8, 13.3)**



**C: PREPARATION TOOL****1. SPECIAL TOOL**

ILLUSTRATION	TOOL NUMBER	Description	REMARKS
 ST1B022XU0	1B022XU0	SUBARU SELECT MONITOR III KIT	Used for troubleshooting the electrical system.

**2. GENERAL TOOL**

TOOL NAME	REMARKS
Circuit tester	Used for measuring resistance and voltage.

**D: CAUTION**

- Wear appropriate work clothing, including a cap, protective goggles and protective shoes when performing any work.
- Remove contamination including dirt and corrosion before removal, installation or disassembly.
- Keep the disassembled parts in order and protect them from dust and dirt.
- Before removal, installation or disassembly, be sure to clarify the failure. Avoid unnecessary removal, installation, disassembly and replacement.
- Use SUBARU genuine fluid, grease etc. or equivalent. Do not mix fluid, grease, etc. of different grades or manufacturers.
- Be sure to tighten fasteners including bolts and nuts to the specified torque.
- Place shop jacks or rigid racks at the specified points.
- Apply grease onto sliding or revolving surfaces before installation.
- Before installing O-rings or snap rings, apply sufficient amount of fluid to avoid damage and deformation.
- Before securing a part in a vise, place cushioning material such as wood blocks, aluminum plate or cloth between the part and the vise.
- Before disconnecting electrical connectors, be sure to disconnect the negative terminal from battery.