

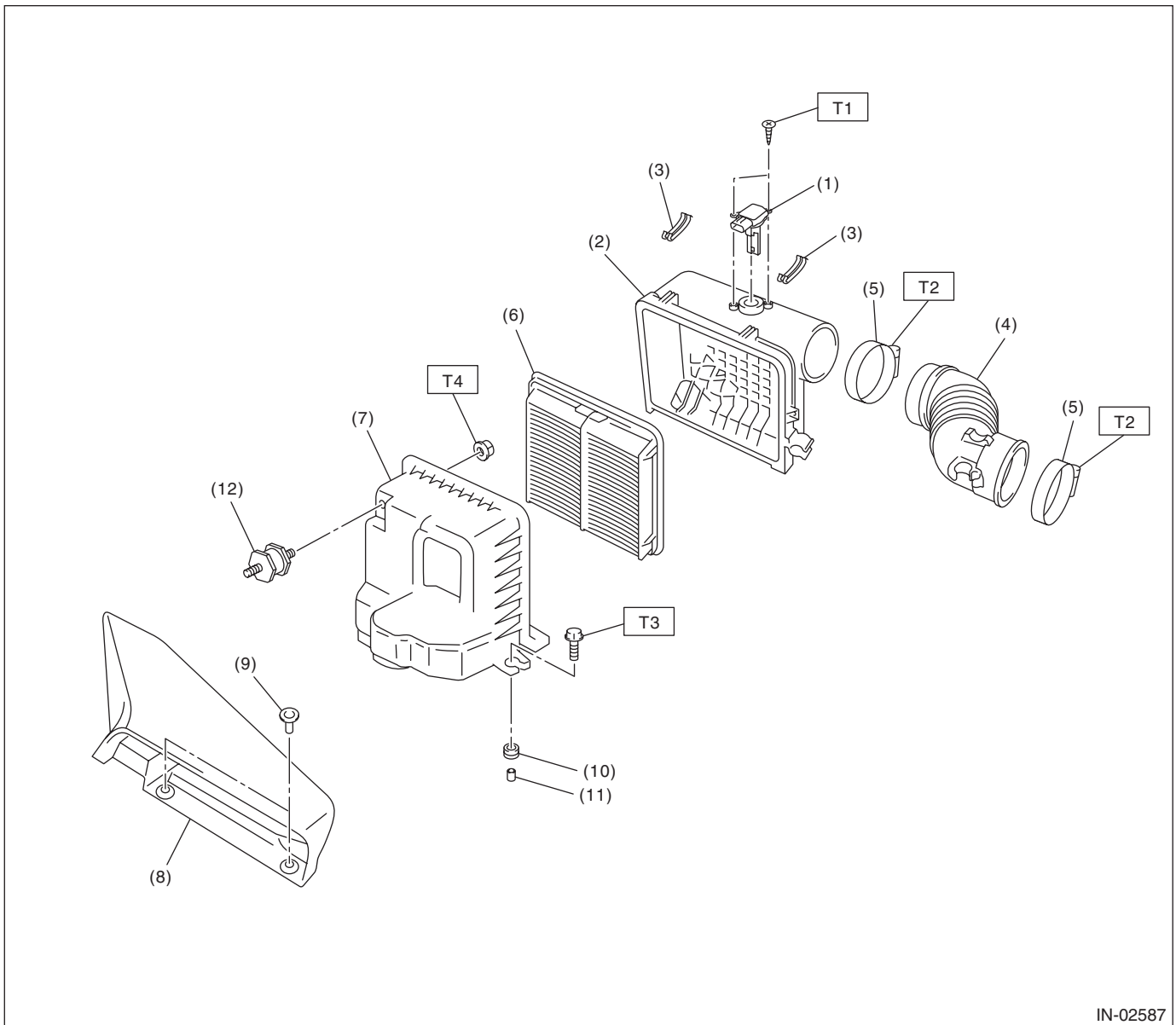
# General Description

INTAKE (INDUCTION)

## 1. General Description

### A: COMPONENT

#### 1. AIR CLEANER



IN-02587

- |   |                              |
|---|------------------------------|
| (1) Mass air flow and intake air temperature sensor | (7) Air cleaner case (Front) |
| (2) Air cleaner case (Rear)                         | (8) Air intake duct          |
| (3) Clip  | (9) Clip                     |
| (4) Air intake boot                                 | (10) Cushion                 |
| (5) Clamp   | (11) Spacer                  |
| (6) Air cleaner element                             | (12) Cushion                 |

**Tightening torque: N·m (kgf-m, ft-lb)**

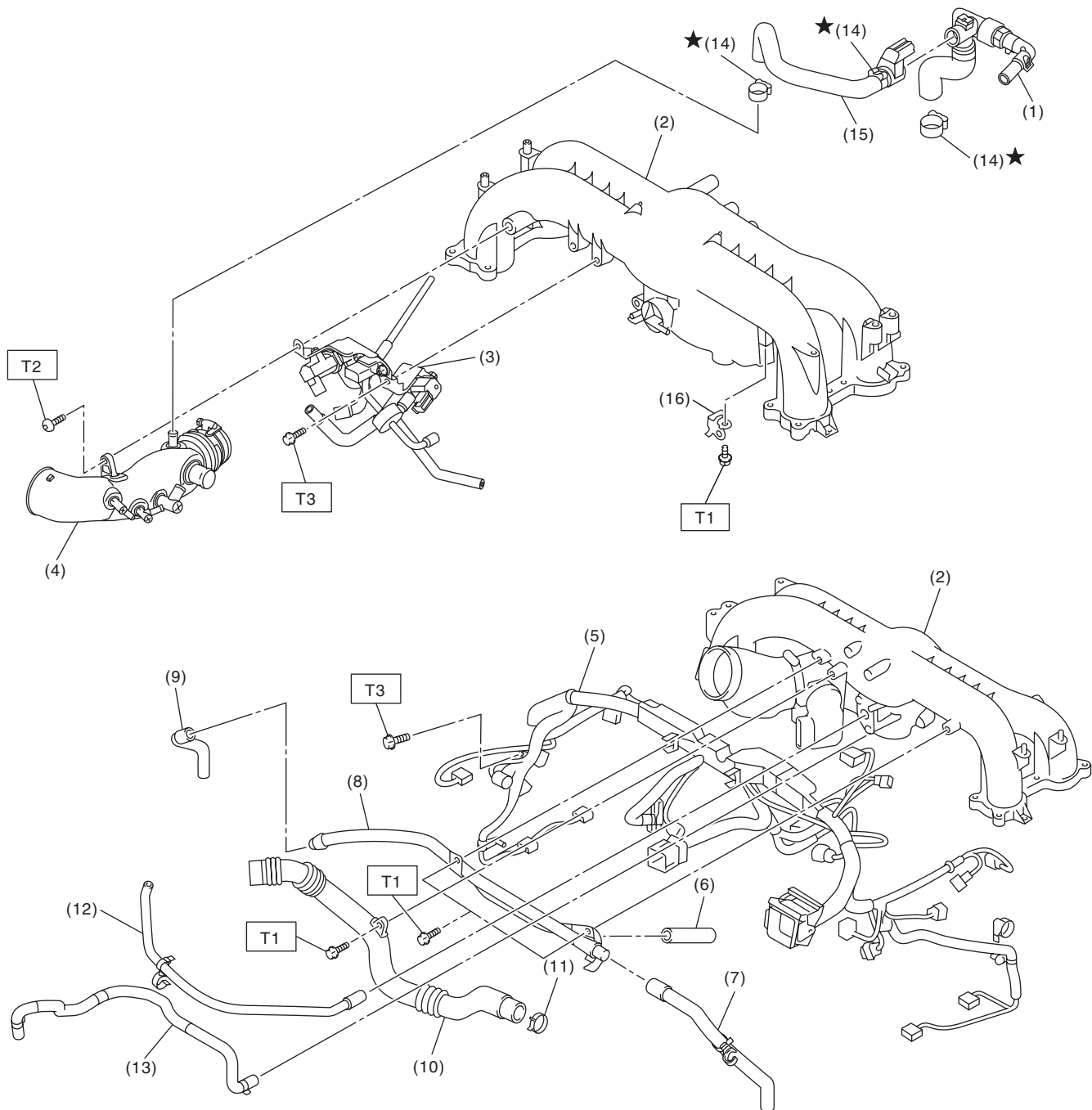
**T1: 1 (0.1, 0.7)**

**T2: 2.5 (0.3, 1.8)**

**T3: 6 (0.6, 4.4)**

**T4: 7.5 (0.8, 5.5)**

### 2. INTAKE DUCT



IN-02565

- (1) PCV hose ASSY A
- (2) Intake manifold
- (3) Solenoid valve bracket ASSY
- (4) Intake duct
- (5) Engine harness ASSY
- (6) Vacuum hose
- (7) Vacuum hose

- (8) PCV pipe
- (9) Vacuum hose
- (10) Air by-pass pipe
- (11) Clip
- (12) Vacuum hose
- (13) Brake booster vacuum hose
- (14) Clamp

- (15) PCV hose ASSY B
- (16) Solenoid valve bracket

#### ***Tightening torque: N·m (kgf-m, ft-lb)***

***T1: 6.4 (0.7, 4.7)***

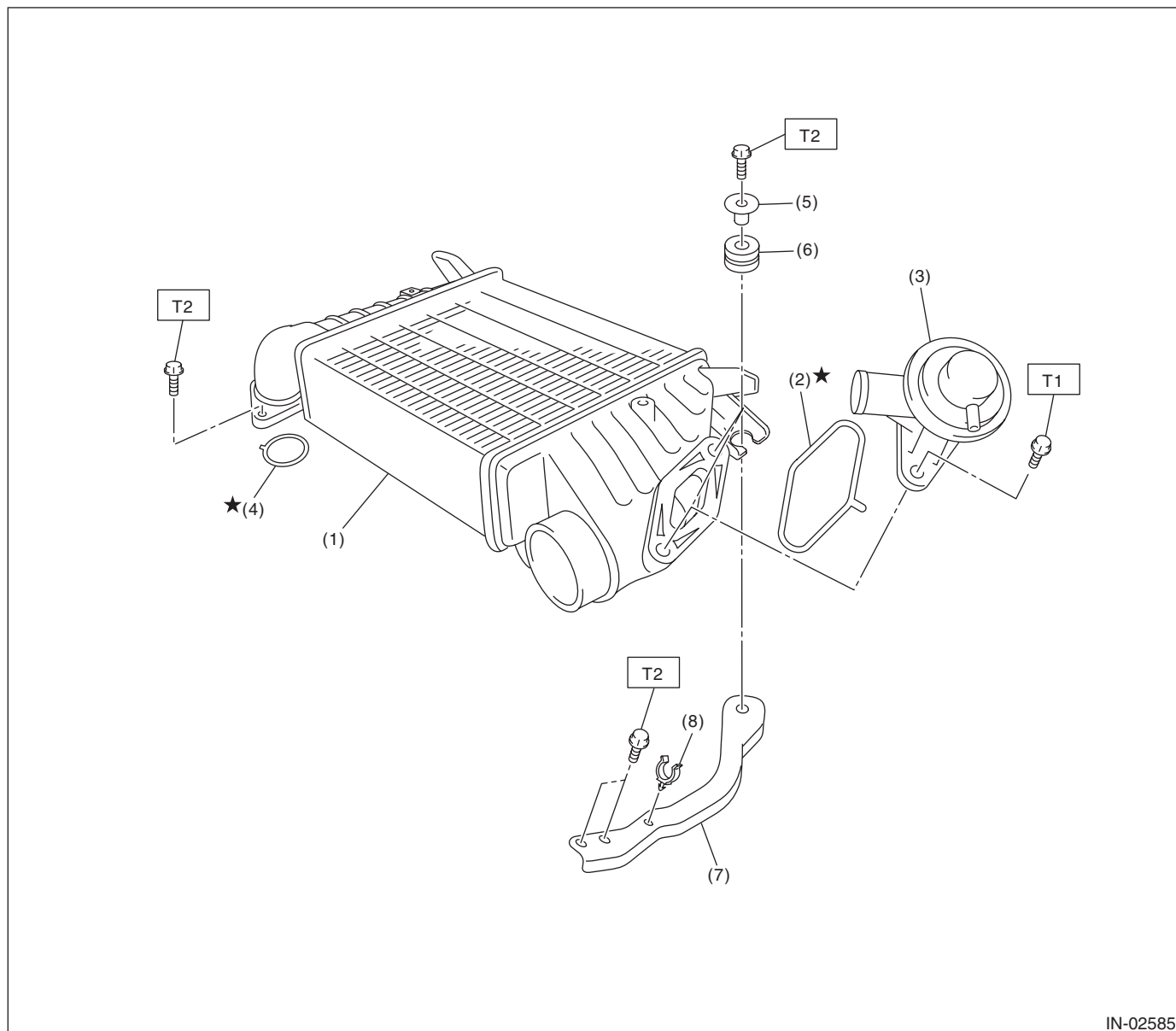
***T2: 17 (1.7, 12.5)***

***T3: 19 (1.9, 14.0)***

# General Description

INTAKE (INDUCTION)

## 3. INTERCOOLER



- (1) Intercooler
- (2) O-ring
- (3) Air by-pass valve
- (4) O-ring

- (5) Spacer
- (6) Cushion
- (7) Intercooler stay
- (8) Clip

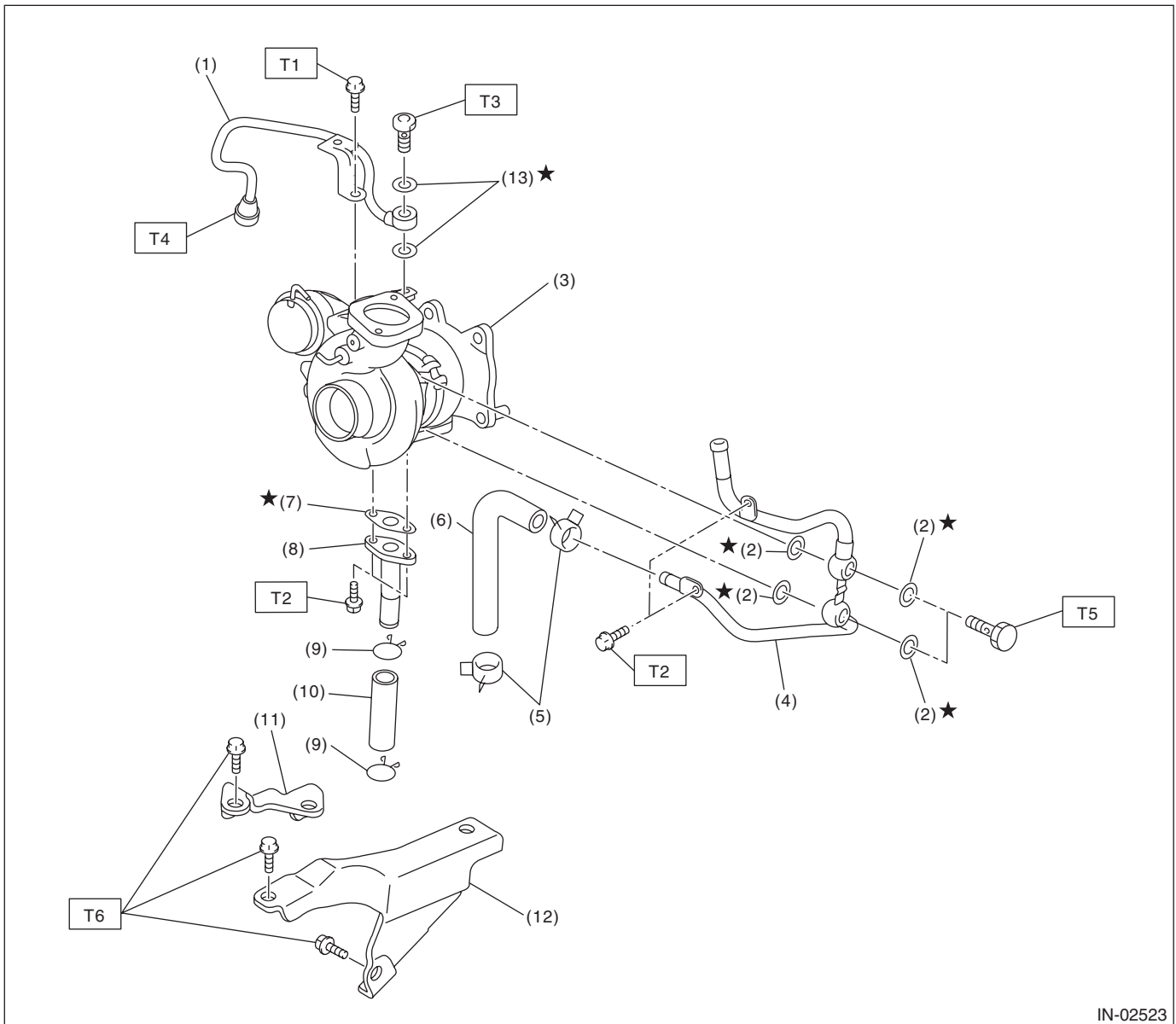
**Tightening torque: N·m (kgf-m, ft-lb)**

**T1: 6.5 (0.7, 4.8)**

**T2: 16 (1.6, 11.8)**

## 4. TURBOCHARGER

- Except for WRX-SS model



IN-02523

- |                         |                           |
|-------------------------|---------------------------|
| (1) Oil inlet pipe      | (8) Oil outlet pipe       |
| (2) Gasket              | (9) Clip                  |
| (3) Turbocharger        | (10) Oil outlet hose      |
| (4) Water pipe          | (11) Turbocharger stay RH |
| (5) Clip                | (12) Turbocharger stay LH |
| (6) Engine coolant hose | (13) Gasket               |
| (7) Gasket              |                           |

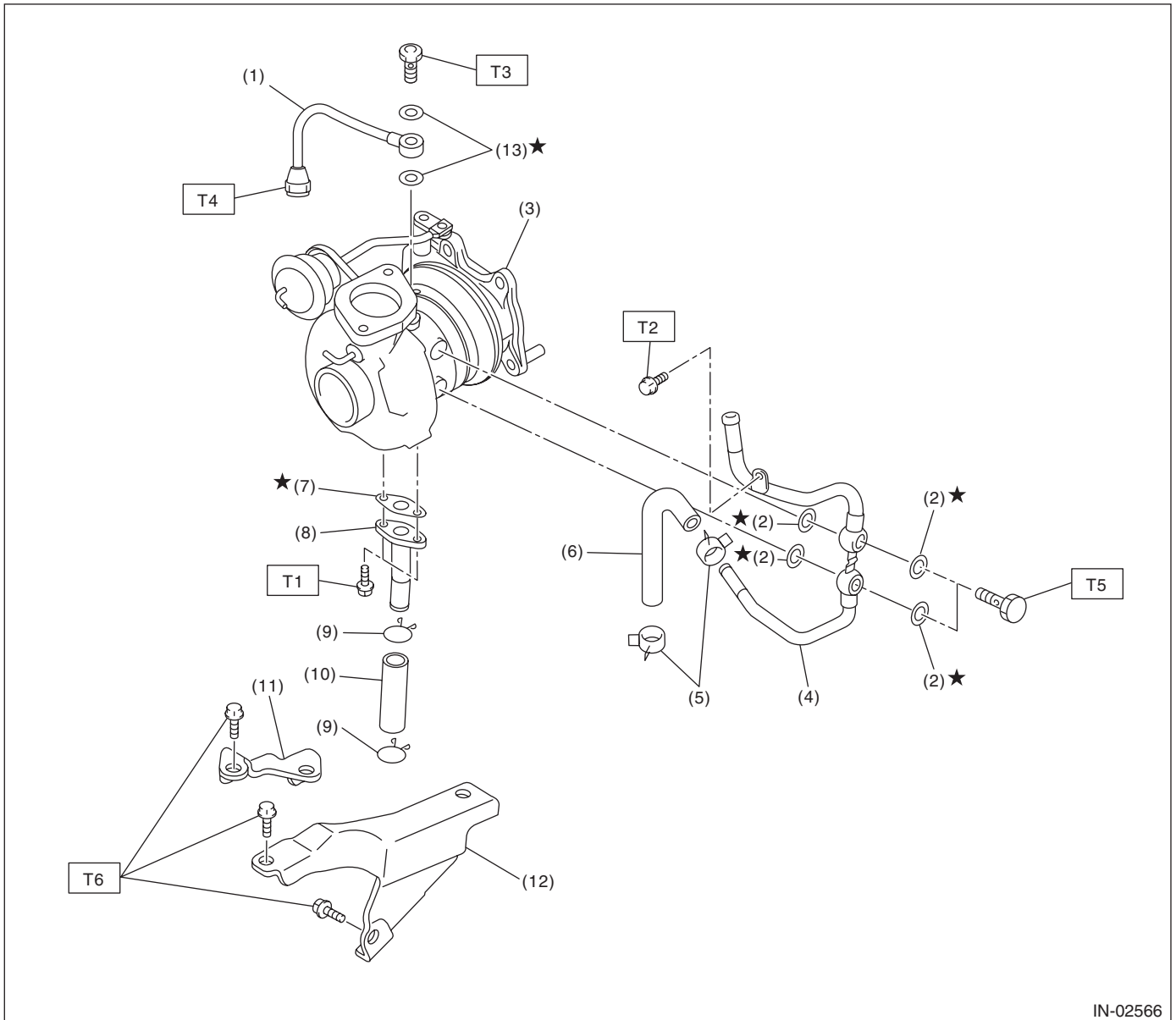
### ***Tightening torque: N·m (kgf-m, ft-lb)***

- T1: 5 (0.5, 3.7)***
- T2: 8.8 (0.9, 6.5)***
- T3: 16 (1.6, 11.8)***
- T4: 20 (2.0, 14.8)***
- T5: 23 (2.3, 17.0)***
- T6: 33 (3.4, 24.3)***

# General Description

## INTAKE (INDUCTION)

- WRX-SS model



IN-02566

- |                         |                           |
|-------------------------|---------------------------|
| (1) Oil inlet pipe      | (8) Oil outlet pipe       |
| (2) Gasket              | (9) Clip                  |
| (3) Turbocharger        | (10) Oil outlet hose      |
| (4) Water pipe          | (11) Turbocharger stay RH |
| (5) Clip                | (12) Turbocharger stay LH |
| (6) Engine coolant hose | (13) Gasket               |
| (7) Gasket              |                           |

### ***Tightening torque:N·m (kgf-m, ft-lb)***

***T1: 4.9 (0.5, 3.6)***

***T2: 6.5 (0.7, 4.8)***

***T3: 16 (1.6, 11.8)***

***T4: 20 (2.0, 14.8)***

***T5: 23 (2.3, 17.0)***

***T6: 33 (3.4, 24.3)***

**B: CAUTION**

- Wear appropriate work clothing, including a cap, protective goggles and protective shoes when performing any work.
- Remove contamination including dirt and corrosion before removal, installation or disassembly.
- Keep the disassembled parts in order and protect them from dust and dirt.
- Before removal, installation or disassembly, be sure to clarify the failure. Avoid unnecessary removal, installation, disassembly and replacement.
- Vehicle components are extremely hot after driving. Be wary of receiving burns from heated parts.
- Be sure to tighten fasteners including bolts and nuts to the specified torque.
- Place shop jacks or rigid racks at the specified points.
- Before disconnecting connectors of sensors or units, be sure to disconnect the ground cable from the battery.

**C: PREPARATION TOOL****1. GENERAL TOOL**

TOOL NAME	REMARKS
Mighty Vac	Used to inspect the waste gate actuator.