

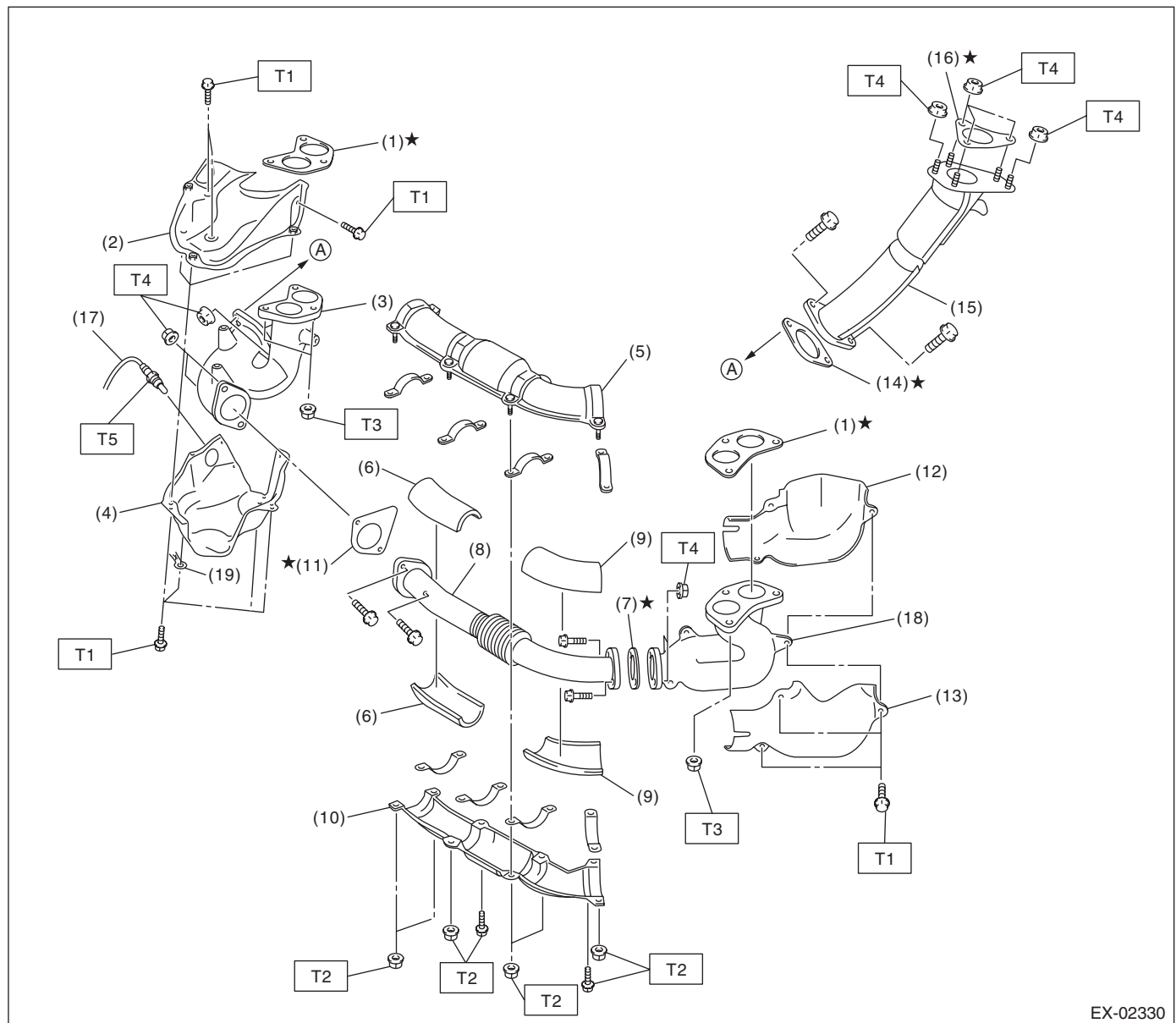
General Description

EXHAUST

1. General Description

A: COMPONENT

1. FRONT EXHAUST PIPE



EX-02330

- | | |
|-------------------------------------|--------------------------------------|
| (1) Gasket | (10) Front exhaust pipe lower cover |
| (2) Exhaust manifold RH upper cover | (11) Gasket |
| (3) Exhaust manifold RH | (12) Exhaust manifold LH inner cover |
| (4) Exhaust manifold RH lower cover | (13) Exhaust manifold LH outer cover |
| (5) Front exhaust pipe upper cover | (14) Gasket |
| (6) Front exhaust pipe insulator RH | (15) Joint pipe |
| (7) Gasket | (16) Gasket |
| (8) Front exhaust pipe | (17) Front oxygen (A/F) sensor |
| (9) Front exhaust pipe insulator LH | (18) Exhaust manifold LH |

- (19) Ground cable

Tightening torque: N·m (kgf-m, ft-lb)

T1: 19 (1.9, 14.0)

T2: 25 (2.5, 18.4)

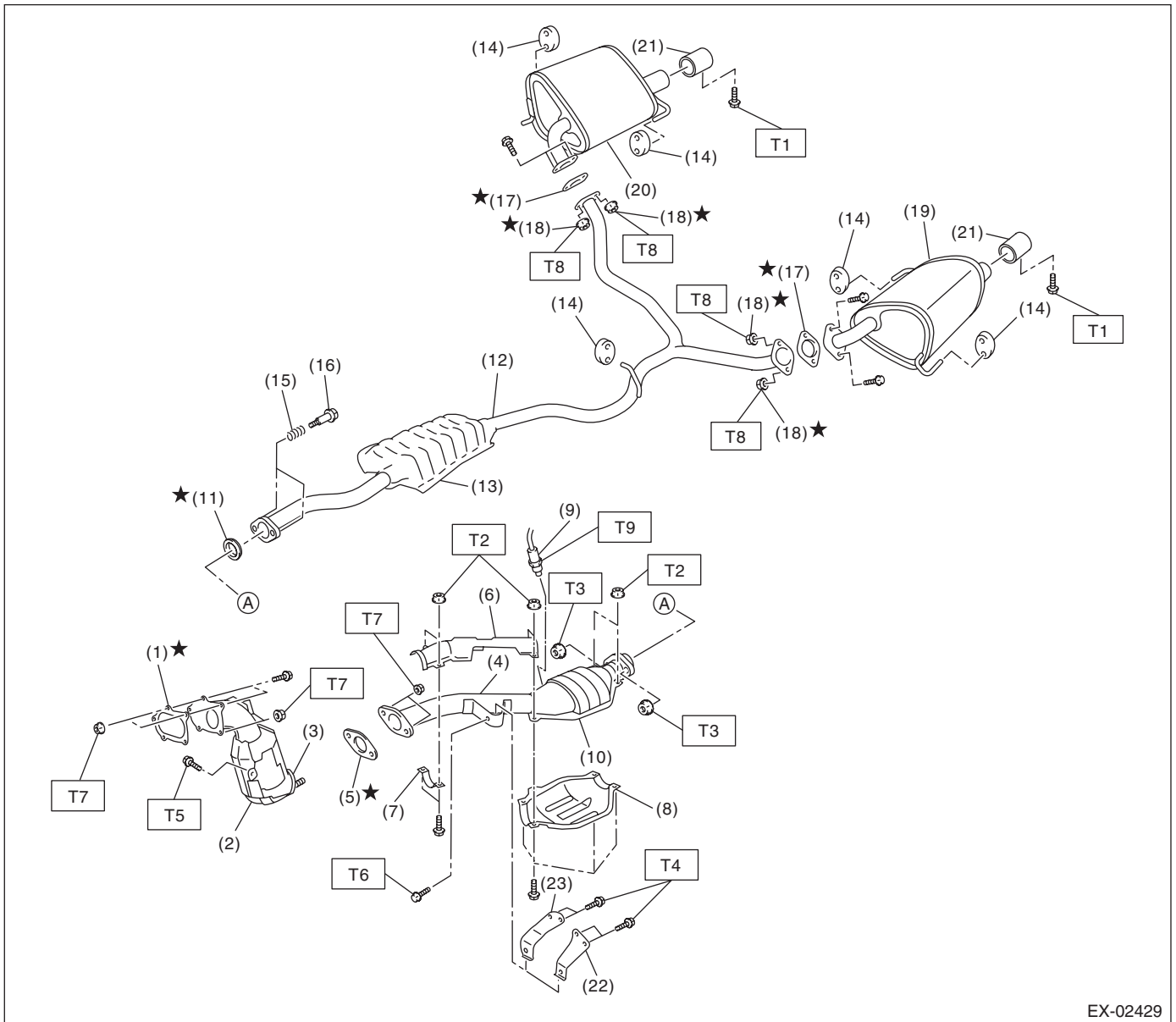
T3: 40 (4.1, 29.5)

T4: 42.5 (4.3, 31.3)

T5: <Ref. to FU(H4DOTC)-47, INSTALLATION, Front Oxygen (A/F) Sensor.>

2. CENTER AND REAR EXHAUST PIPE, AND MUFFLER

- 4 DOOR MODEL



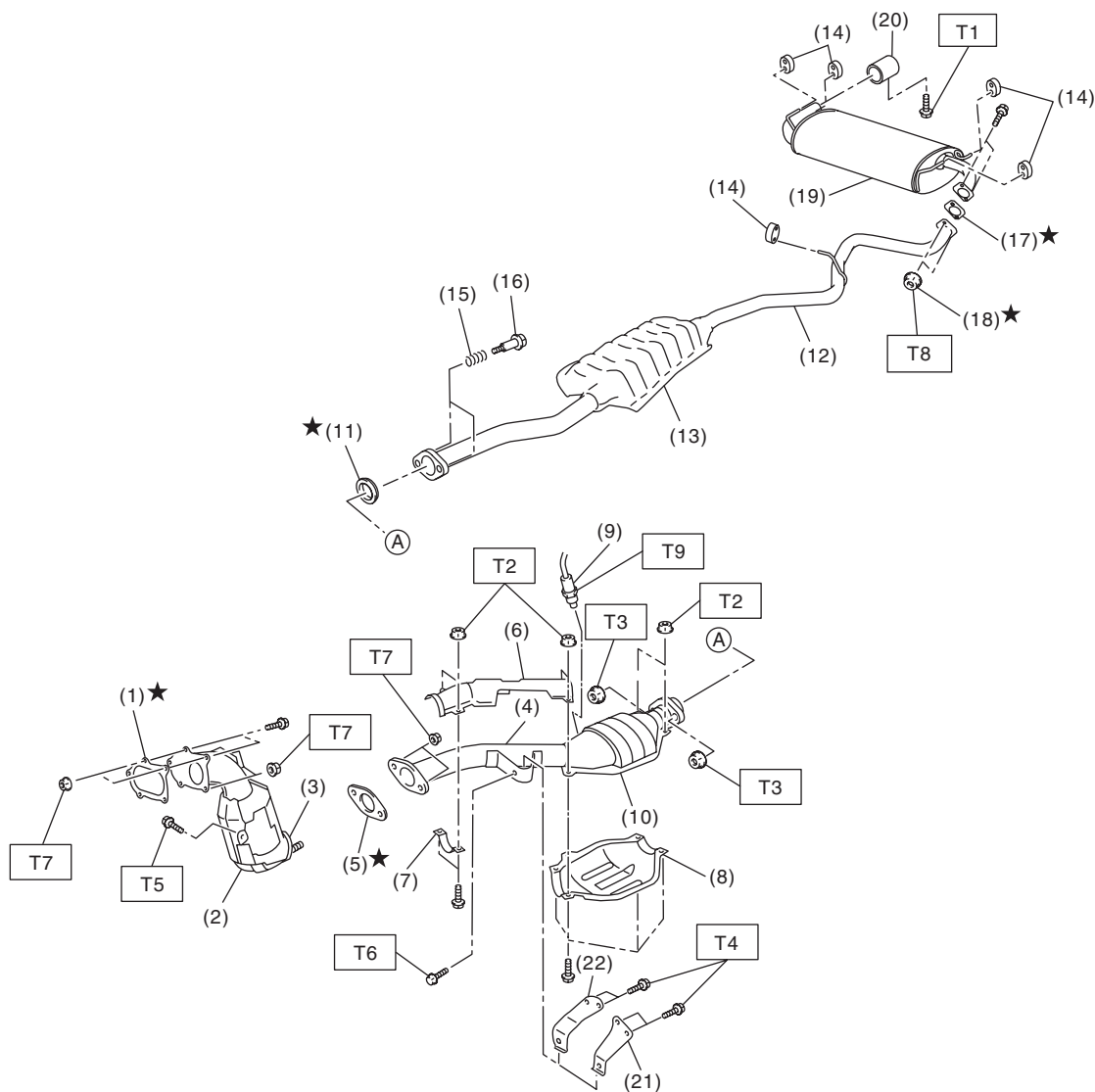
EX-02429

General Description

EXHAUST

(1) Gasket	(13) Chamber	<i>Tightening torque:N·m (kgf-m, ft-lb)</i>
(2) Front catalytic converter	(14) Cushion rubber	<i>T1: 7.5 (0.8, 5.5)</i>
(3) Center exhaust pipe (Front)	(15) Spring	<i>T2: 13 (1.3, 9.6)</i>
(4) Center exhaust pipe (Rear)	(16) Bolt	<i>T3: 18 (1.8, 13.3)</i>
(5) Gasket	(17) Gasket	<i>T4: 23 (2.3, 17.0)</i>
(6) Center pipe upper cover (Rear)	(18) Self-locking nut	<i>T5: 30 (3.1, 22.1)</i>
(7) Clamp	(19) Muffler LH	<i>T6: 35 (3.6, 25.8)</i>
(8) Rear catalytic converter lower cover	(20) Muffler RH	<i>T7: 42.5 (4.3, 31.3)</i>
(9) Rear oxygen sensor	(21) Muffler cutter (Models with muffler cutter)	<i>T8: 48 (4.9, 35.4)</i>
(10) Rear catalytic converter	(22) Hanger bracket (AT model)	<i>T9: <Ref. to FU(H4DOTC)-49, INSTALLATION, Rear Oxygen Sensor.></i>
(11) Gasket	(23) Hanger bracket (MT model)	
(12) Rear exhaust pipe		

• 5 DOOR MODEL



EX-02430

- (1) Gasket
- (2) Front catalytic converter
- (3) Center exhaust pipe (Front)
- (4) Center exhaust pipe (Rear)
- (5) Gasket
- (6) Center pipe upper cover (Rear)
- (7) Clamp
- (8) Rear catalytic converter lower cover
- (9) Rear oxygen sensor
- (10) Rear catalytic converter
- (11) Gasket

- (12) Rear exhaust pipe
- (13) Chamber
- (14) Cushion rubber
- (15) Spring
- (16) Bolt
- (17) Gasket
- (18) Self-locking nut
- (19) Muffler
- (20) Muffler cutter (Models with muffler cutter)
- (21) Hanger bracket (AT model)
- (22) Hanger bracket (MT model)

Tightening torque: N·m (kgf-m, ft-lb)

T1: 7.5 (0.8, 5.5)

T2: 13 (1.3, 9.6)

T3: 18 (1.8, 13.3)

T4: 23 (2.3, 17.0)

T5: 30 (3.1, 22.1)

T6: 35 (3.6, 25.8)

T7: 42.5 (4.3, 31.3)

T8: 48 (4.9, 35.4)

T9: <Ref. to FU(H4DOTC)-49, INSTALLATION, Rear Oxygen Sensor.>

B: CAUTION

- Wear appropriate work clothing, including a cap, protective goggles and protective shoes when performing any work.
- Remove contamination including dirt and corrosion before removal, installation or disassembly.
- Keep the disassembled parts in order and protect them from dust and dirt.
- Before removal, installation or disassembly, be sure to clarify the failure. Avoid unnecessary removal, installation, disassembly and replacement.
- Vehicle components are extremely hot after driving. Be wary of receiving burns from heated parts.
- Be sure to tighten fasteners including bolts and nuts to the specified torque.
- Place shop jacks or rigid racks at the specified points.
- Before disconnecting connectors of sensors or units, be sure to disconnect the ground cable from the battery.
- If any fat adheres to the exhaust pipe, wipe it off. Otherwise a fire may happen.