

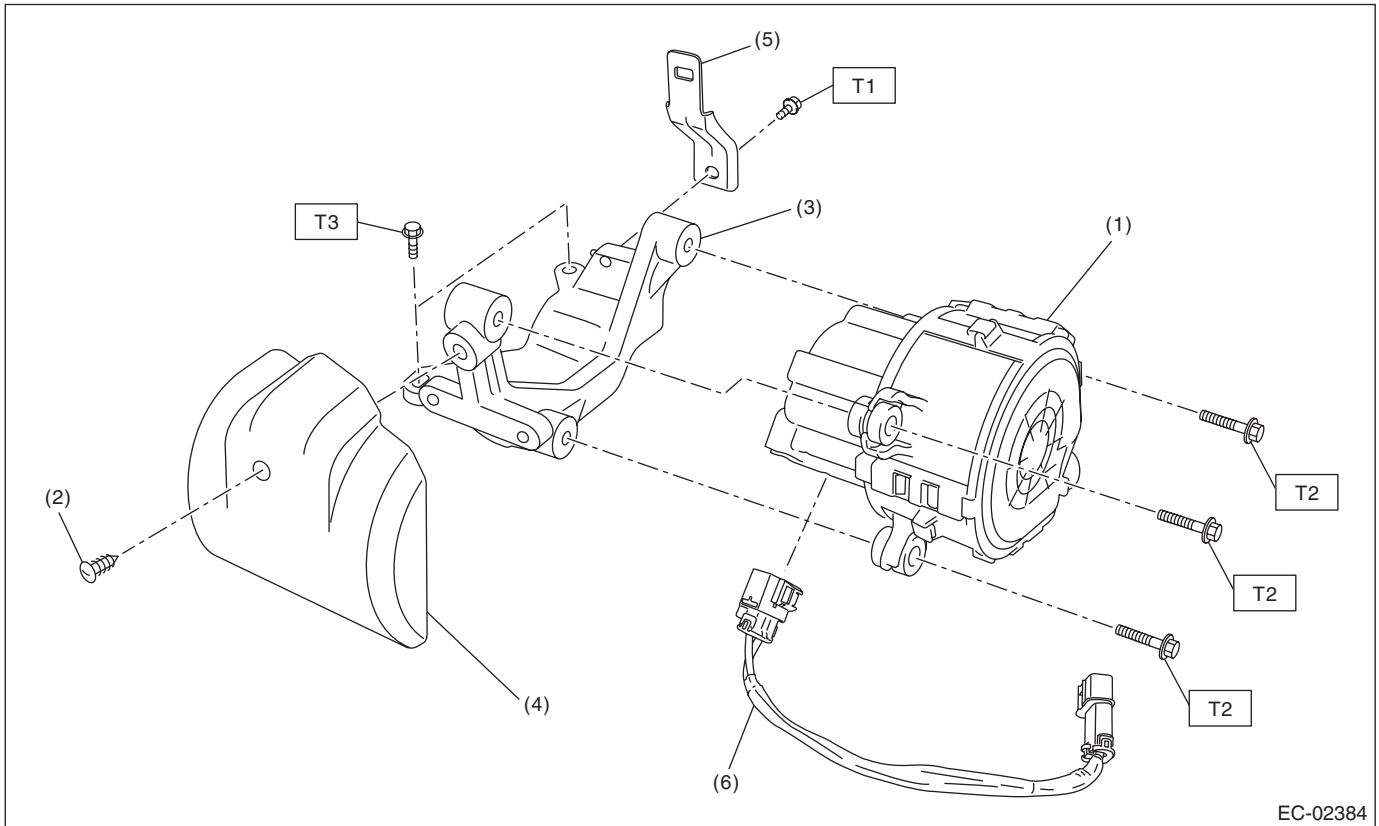
General Description

EMISSION CONTROL (AUX. EMISSION CONTROL DEVICES)

1. General Description

A: COMPONENT

1. SECONDARY AIR PUMP



- | | |
|--------------------------------|--------------------------------|
| (1) Secondary air pump | (4) Secondary air pump cover |
| (2) Clip | (5) Harness stay |
| (3) Secondary air pump bracket | (6) Secondary air pump harness |

Tightening torque: N·m (kgf-m, ft-lb)

T1: 6.4 (0.7, 4.7)

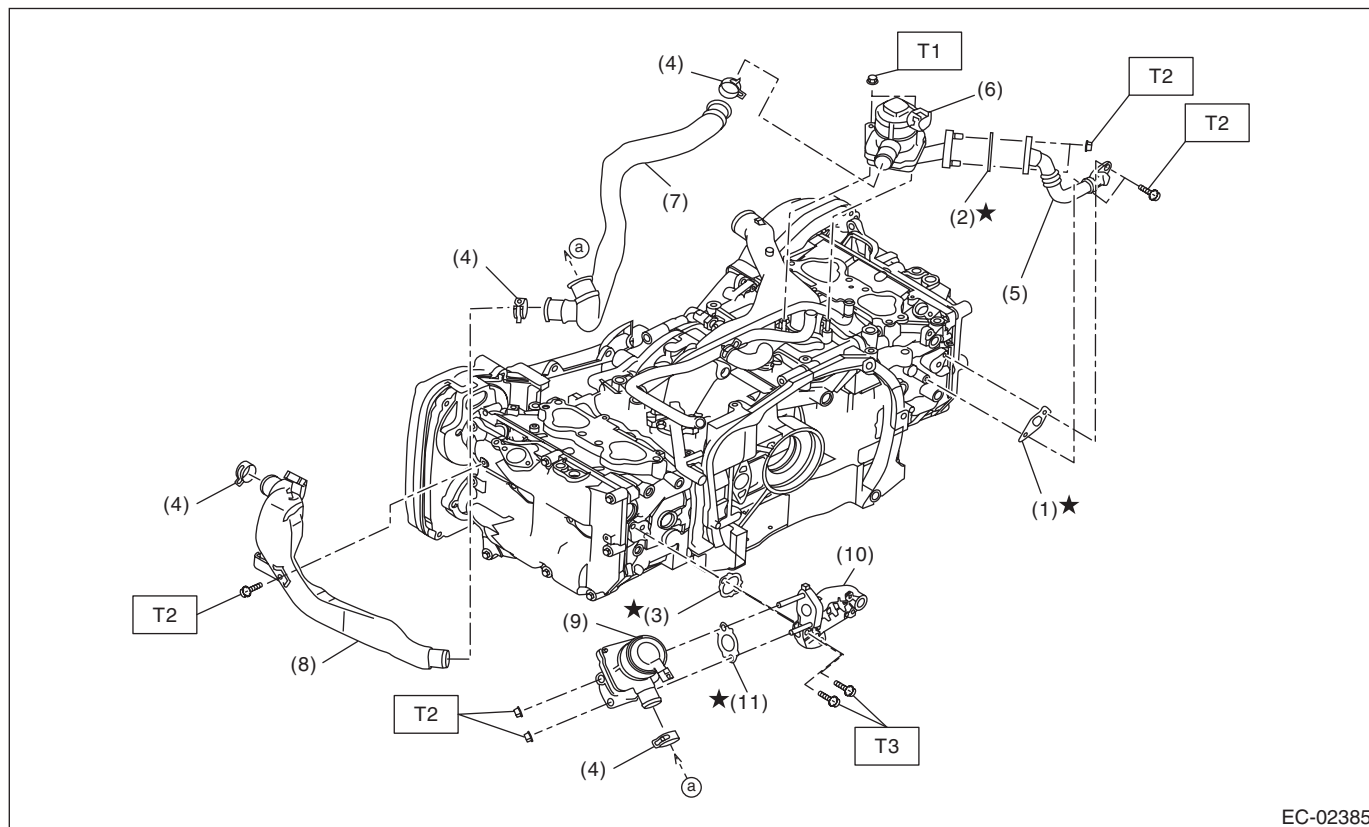
T2: 9 (0.9, 6.6)

T3: 19 (1.9, 14.0)

General Description

EMISSION CONTROL (AUX. EMISSION CONTROL DEVICES)

2. SECONDARY AIR COMBINATION VALVE



- | | |
|--|--|
| (1) Gasket | (7) Air duct A |
| (2) Gasket | (8) Air duct B |
| (3) Gasket | (9) Secondary air combination valve LH |
| (4) Clip | (10) Secondary air pipe LH |
| (5) Secondary air pipe RH | (11) Gasket |
| (6) Secondary air combination valve RH | |

Tightening torque: N·m (kgf-m, ft-lb)

T1: 6.4 (0.7, 4.7)

T2: 9 (0.9, 6.6)

T3: 19 (1.9, 14.0)

General Description

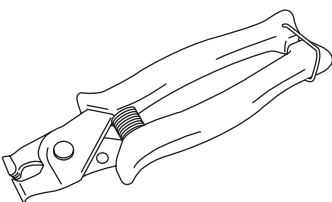
EMISSION CONTROL (AUX. EMISSION CONTROL DEVICES)

B: CAUTION

- Wear appropriate work clothing, including a cap, protective goggles and protective shoes when performing any work.
- Remove contamination including dirt and corrosion before removal, installation or disassembly.
- Keep the disassembled parts in order and protect them from dust and dirt.
- Before removal, installation or disassembly, be sure to clarify the failure. Avoid unnecessary removal, installation, disassembly and replacement.
- Vehicle components are extremely hot after driving. Be wary of receiving burns from heated parts.
- Be sure to tighten fasteners including bolts and nuts to the specified torque.
- Place shop jacks or rigid racks at the specified points.
- Before disconnecting connectors of sensors or units, be sure to disconnect the ground cable from the battery.

C: PREPARATION TOOL

1. SPECIAL TOOL

ILLUSTRATION	TOOL NUMBER	DESCRIPTION	REMARKS
 ST18353AA000	18353AA000	CLAMP PLIERS	<ul style="list-style-type: none">• Used for removing and installing the PCV hose.• This tool is made by the French company CAILLAU. (code) 54.0.000.205 To make it easier to obtain, it has been provided with a tool number.

2. GENERAL TOOL

TOOL NAME	REMARKS
Circuit tester	Used for measuring resistance.