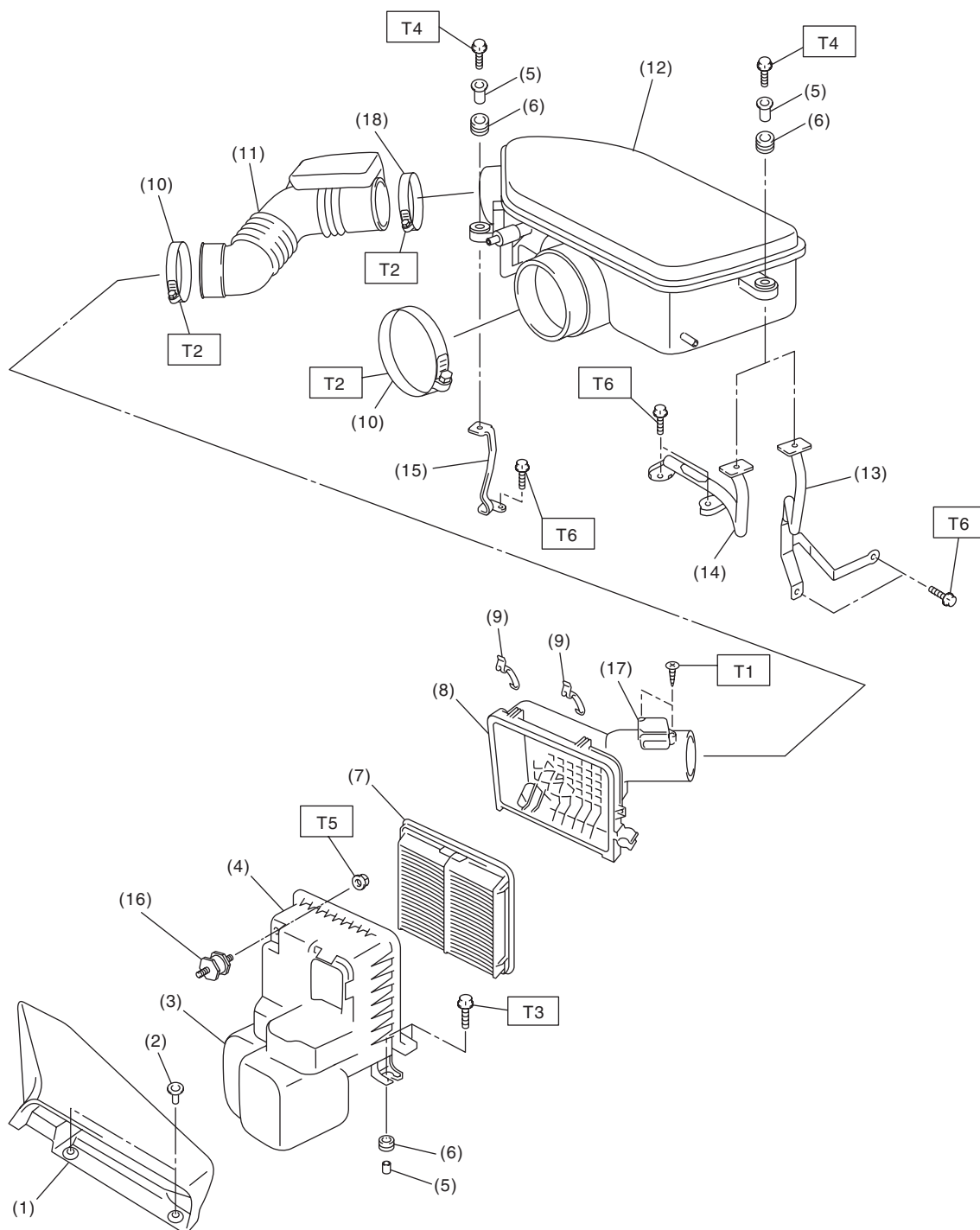


General Description

INTAKE (INDUCTION)

1. General Description

A: COMPONENT



IN-02543

IN(H4SO)-2

General Description

INTAKE (INDUCTION)

(1) Air intake duct	(10) Clamp	<i>Tightening torque:N·m (kgf-m, ft-lb)</i>
(2) Clip	(11) Intake boot	<i>T1: 1 (0.1, 0.7)</i>
(3) Resonator chamber	(12) Air intake chamber	<i>T2: 3 (0.3, 2.2)</i>
(4) Air cleaner case (Front)	(13) Stay LH (MT model)	<i>T3: 6 (0.6, 4.4)</i>
(5) Spacer	(14) Stay LH (AT model)	<i>T4: 6.5 (0.7, 4.8)</i>
(6) Cushion	(15) Stay RH	<i>T5: 7.5 (0.8, 5.5)</i>
(7) Air cleaner element	(16) Cushion	<i>T6: 16 (1.6, 11.8)</i>
(8) Air cleaner case (Rear)	(17) Mass air flow and intake air temperature sensor	
(9) Clip	(18) Clamp	

B: CAUTION

- Wear appropriate work clothing, including a cap, protective goggles and protective shoes when performing any work.
- Remove contamination including dirt and corrosion before removal, installation or disassembly.
- Keep the disassembled parts in order and protect them from dust and dirt.
- Before removal, installation or disassembly, be sure to clarify the failure. Avoid unnecessary removal, installation, disassembly and replacement.
- Vehicle components are extremely hot after driving. Be wary of receiving burns from heated parts.
- Be sure to tighten fasteners including bolts and nuts to the specified torque.
- Place shop jacks or rigid racks at the specified points.
- Before disconnecting connectors of sensors or units, be sure to disconnect the ground cable from the battery.