

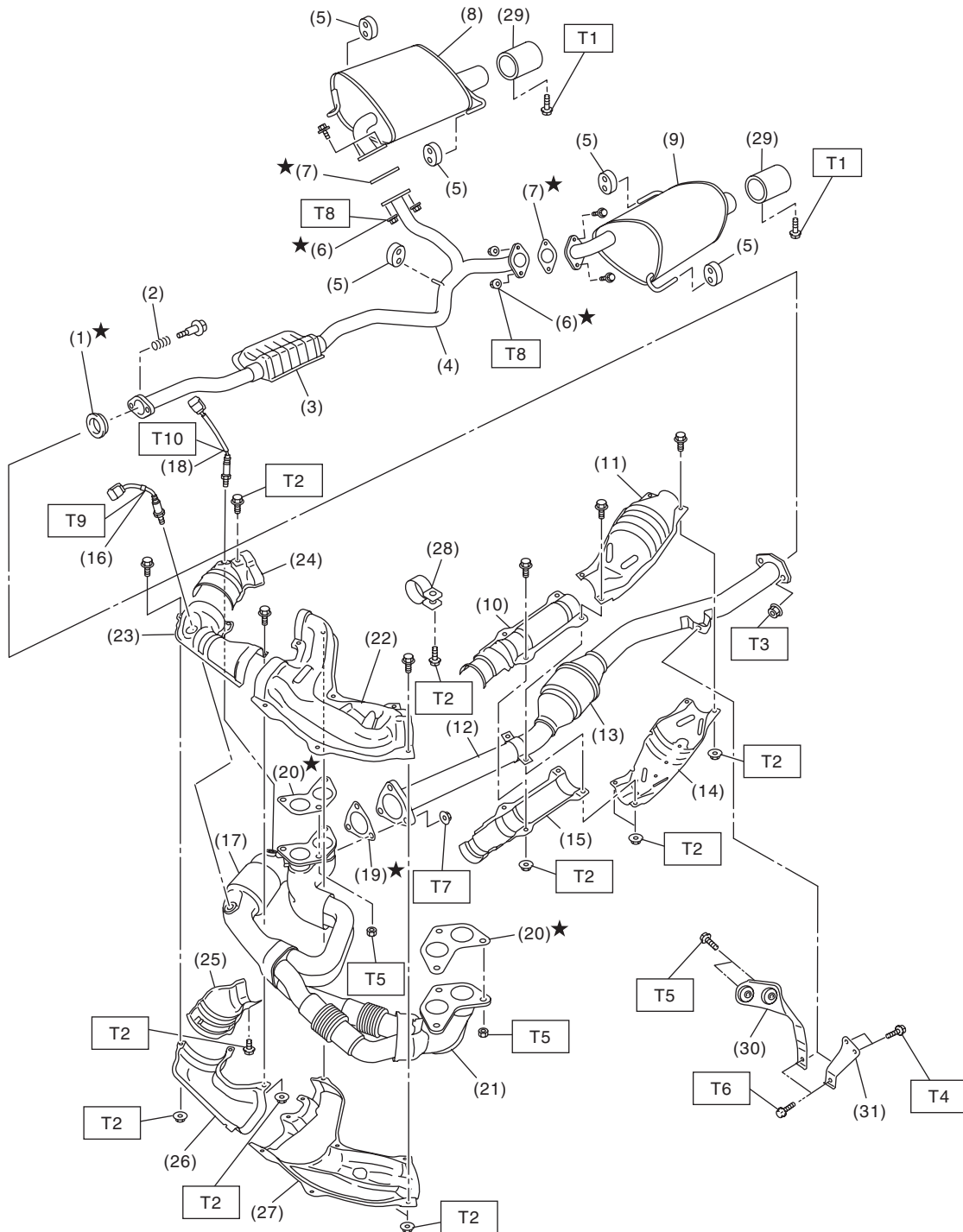
# General Description

## EXHAUST

### 1. General Description

#### A: COMPONENT

- 4 DOOR MODEL



EX-02481

# General Description

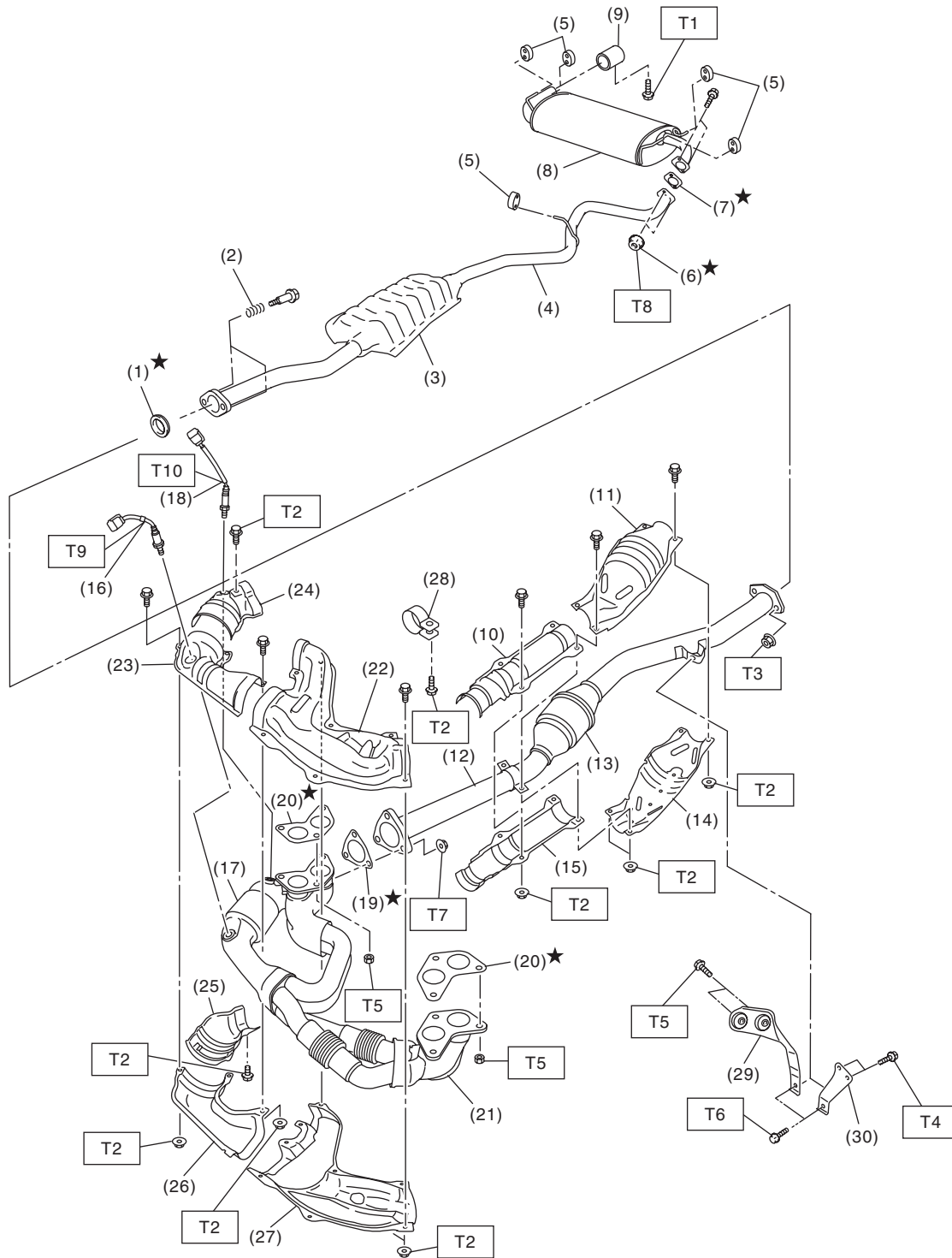
EXHAUST

(1) Gasket	(16) Front oxygen (A/F) sensor	(31) Hanger bracket (AT model)
(2) Spring	(17) Front catalytic converter	
(3) Chamber	(18) Rear oxygen sensor	<b><i>Tightening torque:N·m (kgf-m, ft-lb)</i></b>
(4) Rear exhaust pipe	(19) Gasket	<b><i>T1: 7.5 (0.8, 5.5)</i></b>
(5) Cushion rubber	(20) Gasket	<b><i>T2: 13 (1.3, 9.6)</i></b>
(6) Self-locking nut	(21) Front exhaust pipe	<b><i>T3: 18 (1.8, 13.3)</i></b>
(7) Gasket	(22) Front exhaust pipe upper cover LH	<b><i>T4: 23 (2.3, 17.0)</i></b>
(8) Muffler RH	(23) Front exhaust pipe upper cover RH	<b><i>T5: 30 (3.1, 22.1)</i></b>
(9) Muffler LH	(24) Front catalytic converter upper cover	<b><i>T6: 35 (3.6, 25.8)</i></b>
(10) Center exhaust pipe front upper cover	(25) Front catalytic converter lower cover	<b><i>T7: 40 (4.1, 29.5)</i></b>
(11) Rear catalytic converter upper cover	(26) Front exhaust pipe lower cover RH	<b><i>T8: 48 (4.9, 35.4)</i></b>
(12) Center exhaust pipe	(27) Front exhaust pipe lower cover LH	<b><i>T9: &lt;Ref. to FU(H4SO)-41, INSTALLATION, Front Oxygen (A/F) Sensor.&gt;</i></b>
(13) Rear catalytic converter	(28) Band	<b><i>T10: &lt;Ref. to FU(H4SO)-43, INSTALLATION, Rear Oxygen Sensor.&gt;</i></b>
(14) Rear catalytic converter lower cover	(29) Ornamental muffler tip (Models with ornamental muffler tips)	
(15) Center exhaust pipe front lower cover	(30) Hanger bracket (MT model)	

# General Description

## EXHAUST

- 5 DOOR MODEL



EX-02482

# General Description

EXHAUST

(1) Gasket	(15) Center exhaust pipe front lower cover	(29) Hanger bracket (MT model)
(2) Spring	(16) Front oxygen (A/F) sensor	(30) Hanger bracket (AT model)
(3) Chamber	(17) Front catalytic converter	
(4) Rear exhaust pipe	(18) Rear oxygen sensor	<b>Tightening torque:N·m (kgf-m, ft-lb)</b>
(5) Cushion rubber	(19) Gasket	<b>T1: 7.5 (0.8, 5.5)</b>
(6) Self-locking nut	(20) Gasket	<b>T2: 13 (1.3, 9.6)</b>
(7) Gasket	(21) Front exhaust pipe	<b>T3: 18 (1.8, 13.3)</b>
(8) Muffler	(22) Front exhaust pipe upper cover LH	<b>T4: 23 (2.3, 17.0)</b>
(9) Ornamental muffler tip (Models with ornamental muffler tips)	(23) Front exhaust pipe upper cover RH	<b>T5: 30 (3.1, 22.1)</b>
(10) Center exhaust pipe front upper cover	(24) Front catalytic converter upper cover	<b>T6: 35 (3.6, 25.8)</b>
(11) Rear catalytic converter upper cover	(25) Front catalytic converter lower cover	<b>T7: 40 (4.1, 29.5)</b>
(12) Center exhaust pipe	(26) Front exhaust pipe lower cover RH	<b>T8: 48 (4.9, 35.4)</b>
(13) Rear catalytic converter	(27) Front exhaust pipe lower cover LH	<b>T9: &lt;Ref. to FU(H4SO)-41, INSTALLATION, Front Oxygen (A/F) Sensor.&gt;</b>
(14) Rear catalytic converter lower cover	(28) Band	<b>T10: &lt;Ref. to FU(H4SO)-43, INSTALLATION, Rear Oxygen Sensor.&gt;</b>

## B: CAUTION

- Wear appropriate work clothing, including a cap, protective goggles and protective shoes when performing any work.
- Remove contamination including dirt and corrosion before removal, installation or disassembly.
- Keep the disassembled parts in order and protect them from dust and dirt.
- Before removal, installation or disassembly, be sure to clarify the failure. Avoid unnecessary removal, installation, disassembly and replacement.
- Vehicle components are extremely hot after driving. Be wary of receiving burns from heated parts.
- Be sure to tighten fasteners including bolts and nuts to the specified torque.
- Place shop jacks or rigid racks at the specified points.
- Before disconnecting connectors of sensors or units, be sure to disconnect the ground cable from the battery.
- If any fat adheres to the exhaust pipe, wipe it off. Otherwise a fire may happen.