

# General Description

## PARKING BRAKE

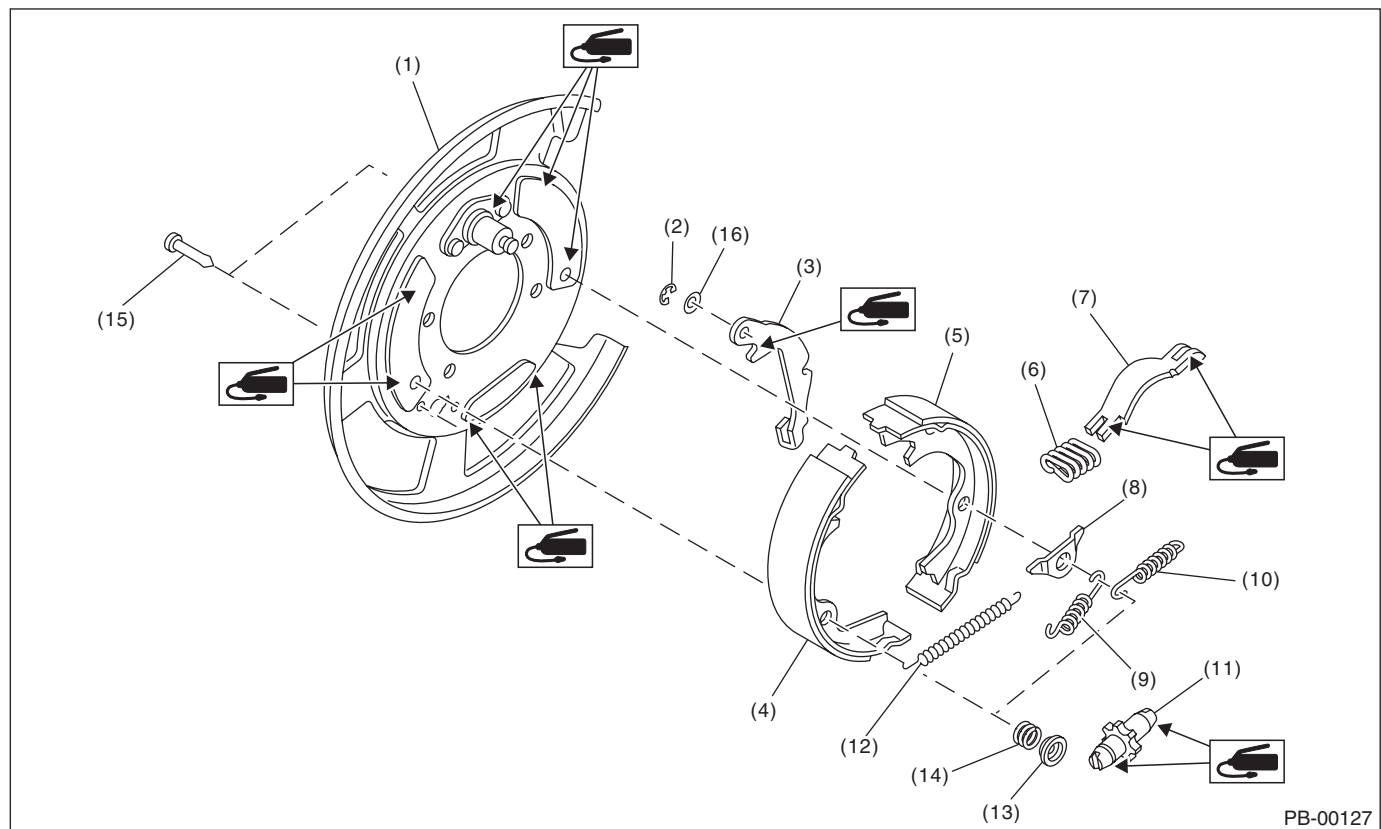
### 1. General Description

#### A: SPECIFICATION

Model		Rear drum brake	Rear disc brake
Type		Rear brake mechanical	Mechanical, drum in disc rear brakes
Effective drum diameter	mm (in)	254 (10)	190 (7.48)
Lining dimensions (Length × Width × Thickness)	mm (in)	243.8 × 40.0 × 4.5 (9.6 × 1.575 × 0.177)	165.8 × 30.0 × 2.8 (6.53 × 1.181 × 0.11)
Clearance adjustment		Automatic adjusting	Manual adjustment
Lever stroke	Notches/N (kgf, lbf)	7 — 8/200 (20.4, 45)	

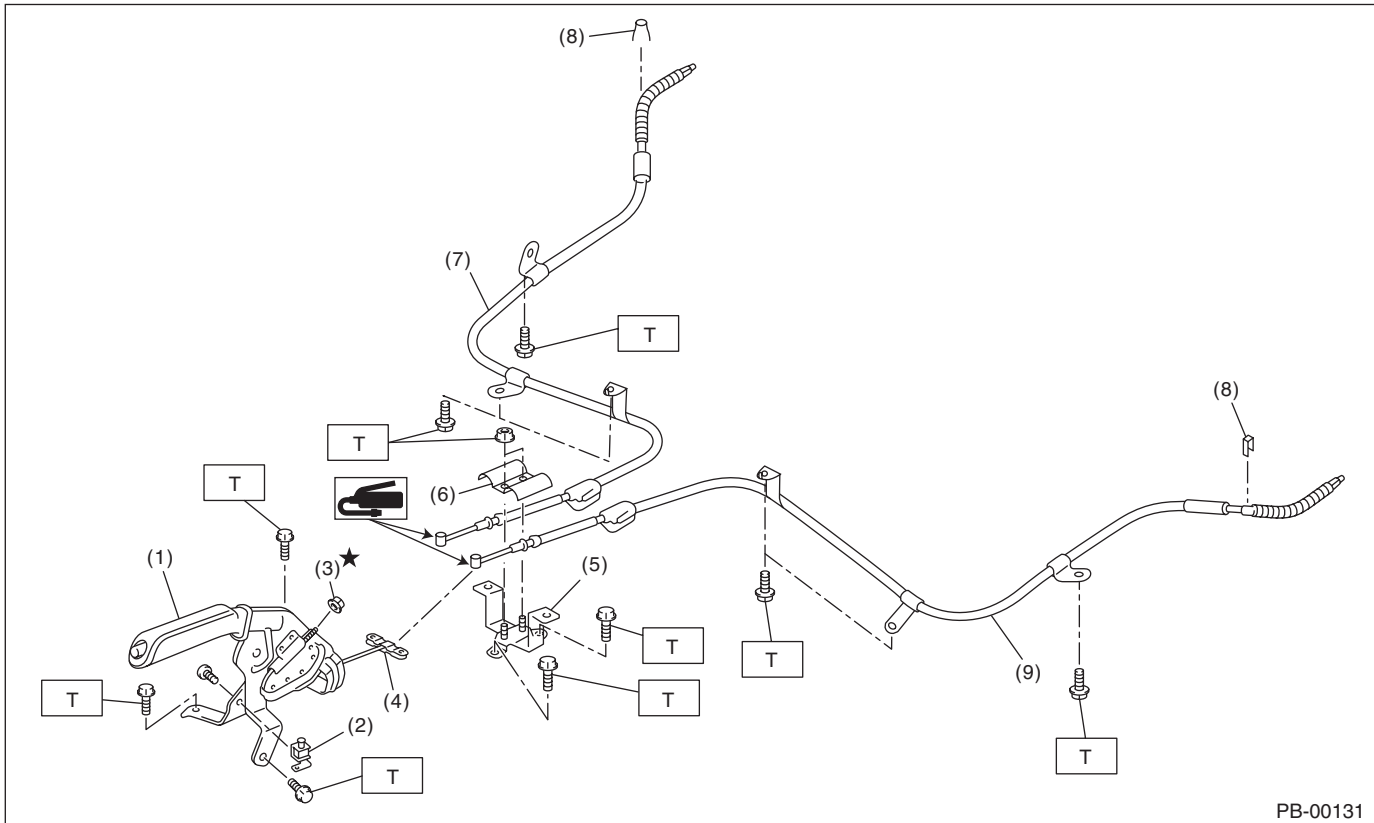
#### B: COMPONENT

##### 1. PARKING BRAKE (REAR DISC BRAKE)



- |                                    |                              |                            |
|------------------------------------|------------------------------|----------------------------|
| (1) Back plate                     | (7) Strut                    | (13) Shoe hold-down cup    |
| (2) Retainer                       | (8) Shoe guide plate         | (14) Shoe hold-down spring |
| (3) Lever                          | (9) Primary return spring    | (15) Shoe hold-down pin    |
| (4) Parking brake shoe (Primary)   | (10) Secondary return spring | (16) Wave washer           |
| (5) Parking brake shoe (Secondary) | (11) Adjuster                |                            |
| (6) Strut spring                   | (12) Adjusting spring        |                            |

### 2. PARKING BRAKE LEVER & CABLE



- |                                      |                            |
|--------------------------------------|----------------------------|
| (1) Parking brake lever              | (6) Clamp                  |
| (2) Parking brake switch             | (7) Parking brake cable RH |
| (3) Adjusting nut (self-locking nut) | (8) Clamp                  |
| (4) Equalizer                        | (9) Parking brake cable LH |
| (5) Bracket                          |                            |

**Tightening torque: N·m (kgf-m, ft-lb)**

**T: 18 (1.8, 13.3)**

### C: CAUTION

- Wear appropriate work clothing, including a cap, protective goggles and protective shoes when performing any work.
- Before removal, installation or disassembly, be sure to clarify the failure. Avoid unnecessary removal, installation, disassembly and replacement.
- Vehicle components are extremely hot after driving. Be wary of receiving burns from heated parts.
- Use SUBARU genuine grease etc. or equivalent. Do not mix grease etc. of different grades or manufacturers.
- Be sure to tighten fasteners including bolts and nuts to the specified torque.
- Place shop jacks or rigid racks at the specified points.
- Make sure grease does not come into contact with the parking shoes.