

General Description

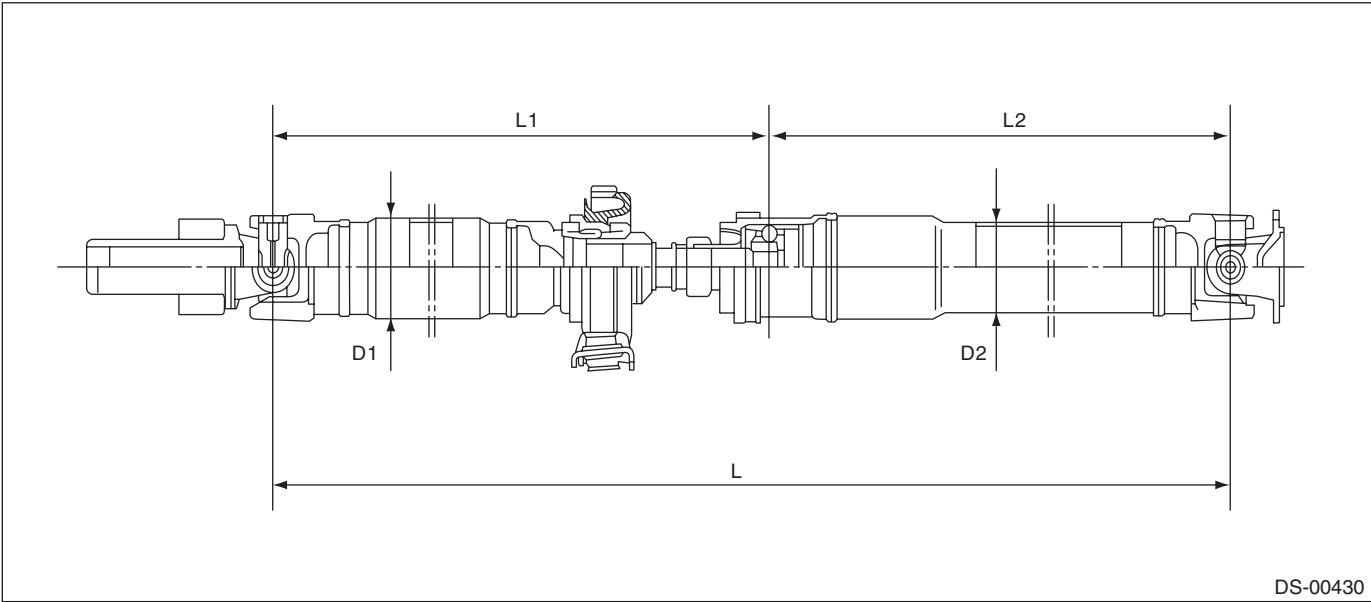
DRIVE SHAFT SYSTEM

1. General Description

A: SPECIFICATION

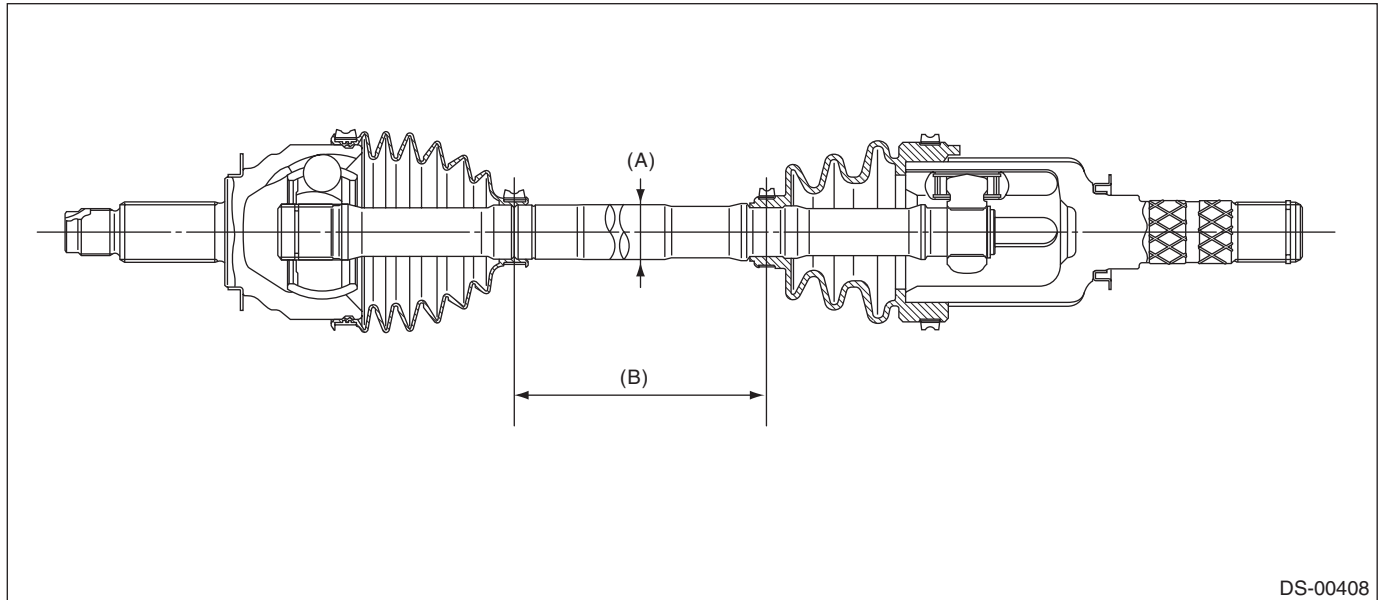
1. PROPELLER SHAFT

Car line		All models	
Propeller shaft type		EDJ	
Front propeller shaft Joint-to-joint length: L ₁	mm (in)	AT	735.5 (28.96)
		MT	675.5 (26.59)
Rear propeller shaft Joint-to-Joint length: L ₂		mm (in)	698 (27.48)
Outer diameter of tube:	mm (in)	D ₁	63.5 (2.500)
		D ₂	57.5 (2.264)



2. FRONT DRIVE SHAFT ASSEMBLY

Model	Type of drive shaft	Axle diameter ϕ D mm (in)	Axle length L mm (in)
All models	AC + AAR	26 (1.02)	335.2 (13.20)

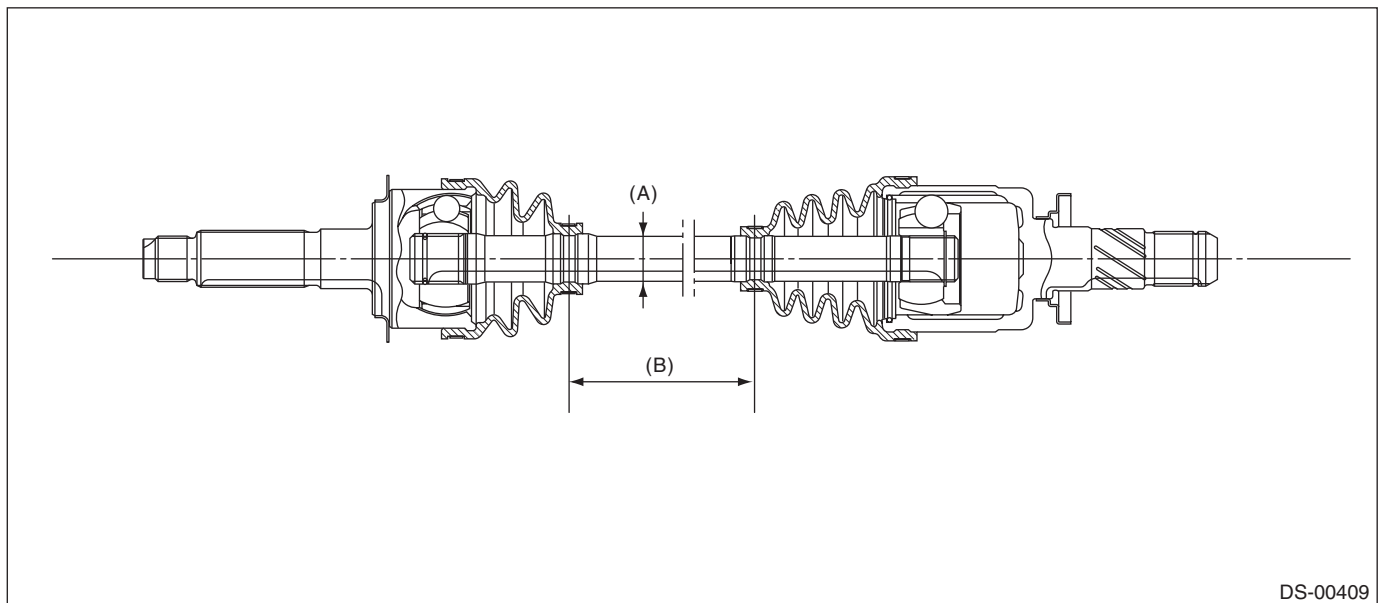


(A) Axle diameter

(B) Axle length

3. REAR DRIVE SHAFT ASSEMBLY

Model	Type of drive shaft	Axle diameter ϕ D mm (in)	Axle length L mm (in)
All models	EBJ + DOJ	22 (0.87)	368.3 (14.50)



(A) Axle diameter

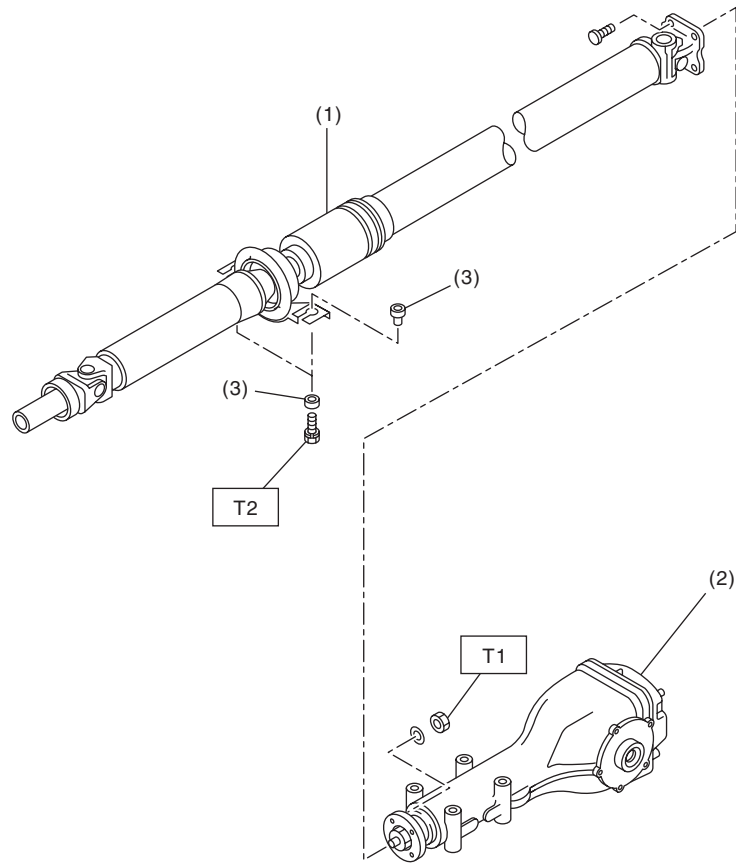
(B) Axle length

General Description

DRIVE SHAFT SYSTEM

B: COMPONENT

1. PROPELLER SHAFT



DS-00368

- (1) Propeller shaft
- (2) Rear differential

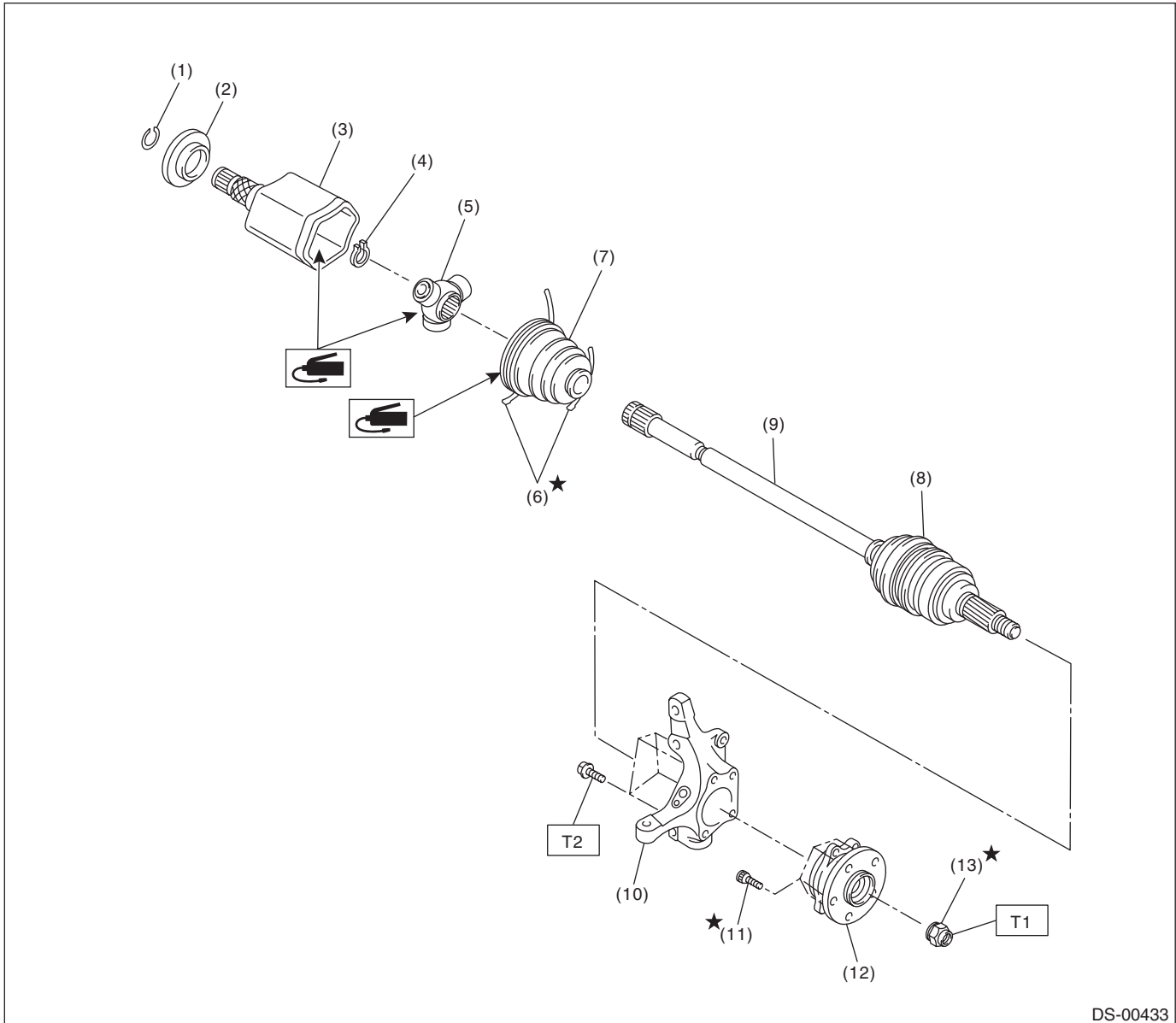
- (3) Bushing

Tightening torque: N·m (kgf-m, ft-lb)

T1: 31 (3.2, 22.9)

T2: 52 (5.3, 38.4)

2. FRONT AXLE



DS-00433

- | | |
|----------------------|-----------------------------|
| (1) Circlip | (7) Boot (AAR) |
| (2) Baffle plate | (8) Boot (AC) |
| (3) Outer race (AAR) | (9) AC shaft ASSY |
| (4) Snap ring | (10) Housing |
| (5) Trunnion | (11) Hub bolt |
| (6) Boot band | (12) Front hub unit bearing |

- (13) Axle nut

Tightening torque: N·m (kgf-m, ft-lb)

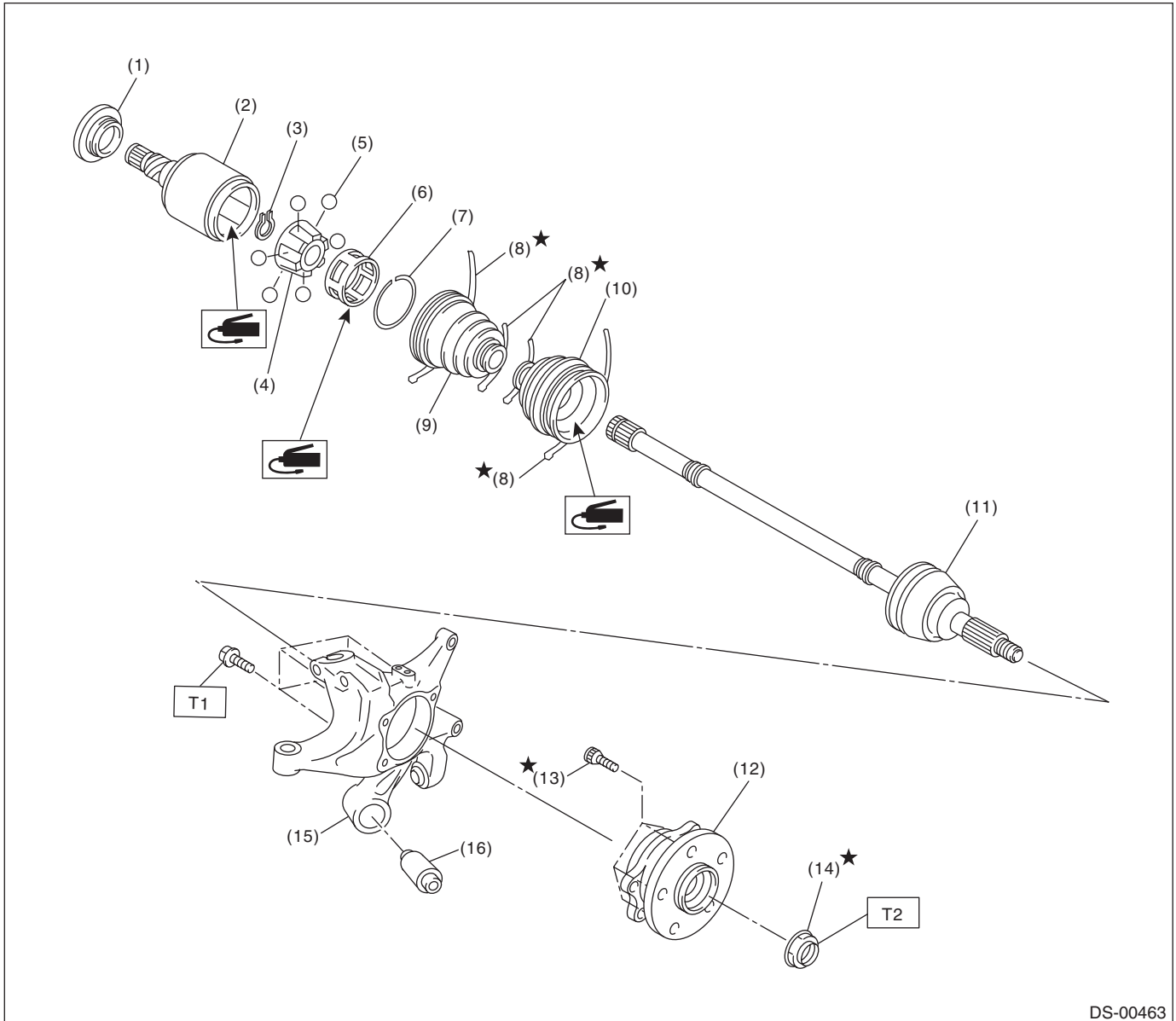
T1: 220 (22.4, 162.3)

T2: 65 (6.6, 47.9)

General Description

DRIVE SHAFT SYSTEM

3. REAR AXLE



DS-00463

- | | | |
|----------------------|----------------------------|------------------------|
| (1) Baffle plate | (8) Boot band | (15) Rear axle housing |
| (2) Outer race (DOJ) | (9) Boot (DOJ) | (16) Bushing |
| (3) Snap ring | (10) Boot (BJ) | |
| (4) Inner race | (11) EBJ shaft ASSY | |
| (5) Ball | (12) Rear hub unit bearing | |
| (6) Cage | (13) Hub bolt | |
| (7) Snap ring | (14) Axle nut | |

Tightening torque: N·m (kgf-m, ft-lb)

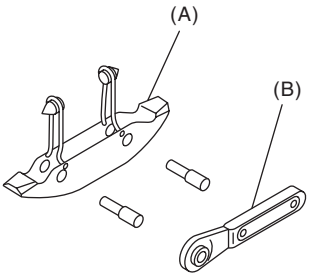
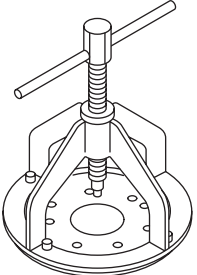
T1: 65 (6.6, 47.9)

T2: 190 (19.4, 140.1)

C: CAUTION

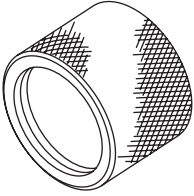
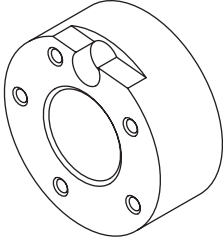
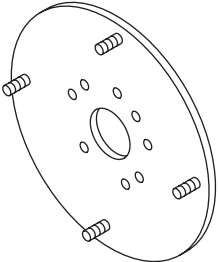
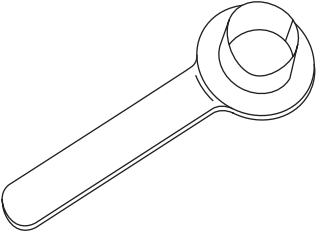
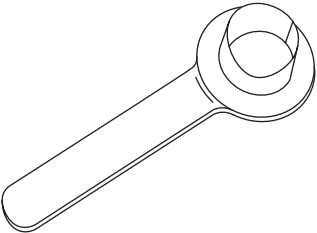
- Wear appropriate work clothing, including a cap, protective goggles and protective shoes when performing any work.
- Remove contamination including dirt and corrosion before removal, installation or disassembly.
- Keep the disassembled parts in order and protect them from dust and dirt.
- Before removal, installation or disassembly, be sure to clarify the failure. Avoid unnecessary removal, installation, disassembly and replacement.
- Vehicle components are extremely hot after driving. Be wary of receiving burns from heated parts.
- Use SUBARU genuine grease etc. or equivalent. Do not mix grease etc. of different grades or manufacturers.
- Be sure to tighten fasteners including bolts and nuts to the specified torque.
- Place shop jacks or rigid racks at the specified points.
- Apply grease onto sliding or revolving surfaces before installation.
- Before installing snap rings, apply sufficient amount of grease to avoid damage and deformation.
- Before securing a part on a vise, place cushioning materials such as wood blocks, aluminum plates, or waste cloth between the part and the vise.

D: PREPARATION TOOL**1. SPECIAL TOOL**

ILLUSTRATION	TOOL NUMBER	DESCRIPTION	REMARKS
 <p>ST-925091000</p>	925091000	BAND TIGHTENING TOOL	Used for tightening the boot band. (A) Jig for the band (B) Ratchet wrench
 <p>ST-926470000</p>	926470000	AXLE SHAFT PULLER	<ul style="list-style-type: none"> • Used for removing the axle shaft. • Used together with AXLE SHAFT PULLER PLATE (28099PA110).

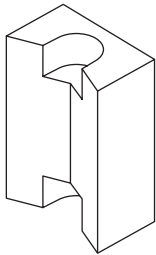
General Description

DRIVE SHAFT SYSTEM

ILLUSTRATION	TOOL NUMBER	DESCRIPTION	REMARKS
 ST18675AA000	18675AA000	DIFFERENTIAL SIDE OIL SEAL INSTALLER	Used for installing the differential side retainer oil seal.
 ST-927080000	927080000	HUB STAND	Used for assembling hub bolt in hub.
 ST28099PA110	28099PA110	AXLE SHAFT PULLER PLATE	Exchange with the plate of the AXLE SHAFT PULLER (926470000) to use.
 ST28099PA090	28099PA090	OIL SEAL PROTEC- TOR	<ul style="list-style-type: none"> • Used for installing the rear drive shaft to the rear differential. • For protecting the oil seal.
 ST28399SA010	28399SA010	OIL SEAL PROTEC- TOR	<ul style="list-style-type: none"> • Used for installing front drive shaft into front differential. • For protecting the oil seal.

General Description

DRIVE SHAFT SYSTEM

ILLUSTRATION	TOOL NUMBER	DESCRIPTION	REMARKS
 <p>ST28399AG000</p>	28399AG000	HUB STAND	Used for extracting hub bolt.

2. GENERAL TOOL

TOOL NAME	REMARKS
Puller	Used for removing the ball joint from knuckle arm.
Dial gauge	Used for inspecting the propeller shaft run-out.
Extension cap	Used for preventing leakage of gear oil or ATF.
Crowbar	Used for extracting drive shaft.