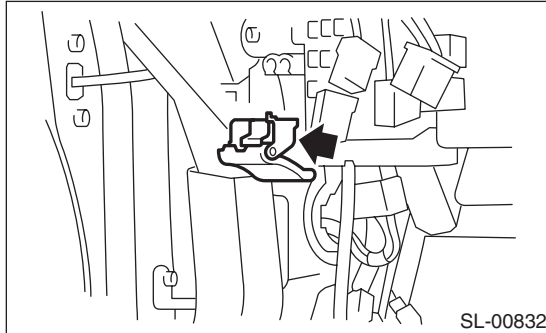


15.Remote Openers

A: REMOVAL

1. FRONT HOOD OPENER

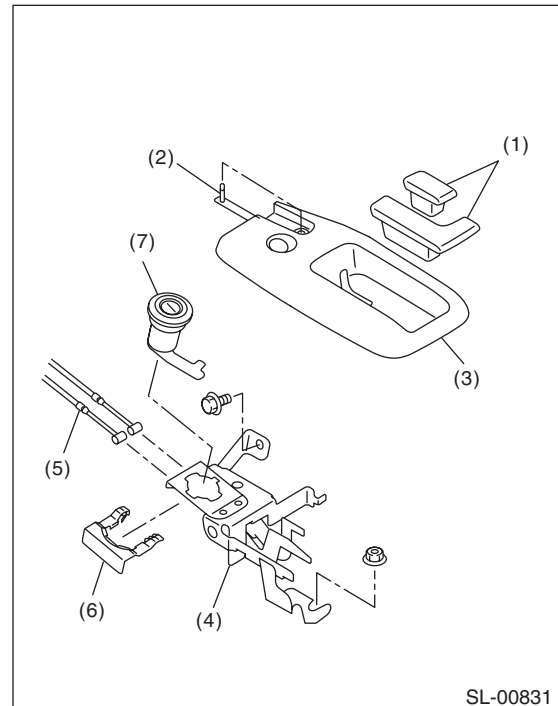
- 1) Remove the cable from the front hood lock.
- 2) Remove the bolt, and then detach the opener lever.



2. TRUNK LID OPENER

- 1) Remove the rear seat. <Ref. to SE-12, REMOVAL, Rear Seat.>
- 2) Remove the lower inner trim, rear quarter trim and floor mat on the driver's side. Remove the clip holding the cable.
- 3) Remove the opener lever (1).
- 4) Remove the pin (2) and remove front cover (3).

- 5) Remove the bolt and nut, and remove the pull handle assembly (4).



- (1) Opener lever
- (2) Pin
- (3) Front cover
- (4) Pull handle ASSY
- (5) Cable
- (6) Clamp
- (7) Key cylinder

- 6) Remove the cable (5) from the pull handle assembly (4).
- 7) Remove clamp (6) to remove the key cylinder (7).

CAUTION:

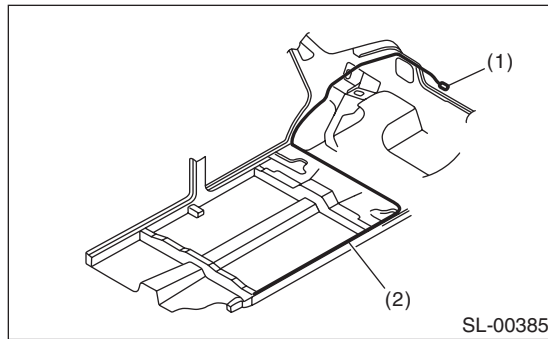
Remove the key cylinder in the UNLOCK position.

- 8) Remove the trunk lid lock assembly from the trunk lid.

Remote Openers

SECURITY AND LOCKS

9) Remove the cable from the trunk lid lock assembly.



- (1) Trunk lid lock ASSY
- (2) Cable

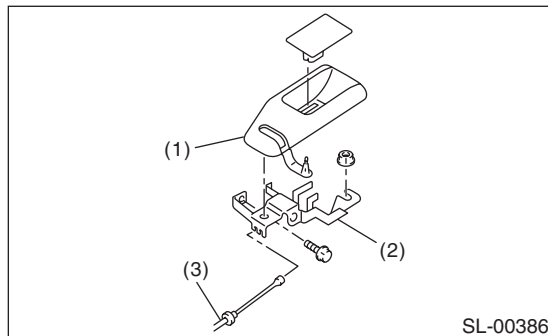
3. FUEL FILLER LID OPENER

4 DOOR MODEL

Refer to the trunk lid opener. <Ref. to SL-41, TRUNK LID OPENER, REMOVAL, Remote Openers.>

5 DOOR MODEL

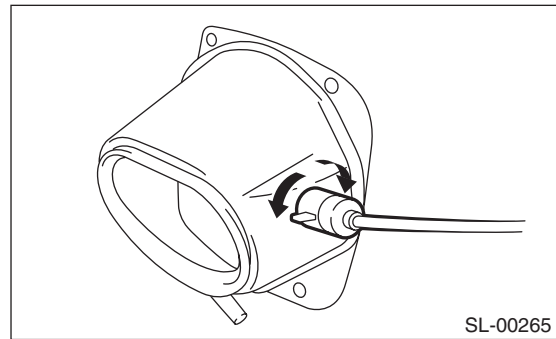
- 1) Remove the rear seat. <Ref. to SE-12, REMOVAL, Rear Seat.>
- 2) Remove the lower inner trim, rear quarter trim and floor mat on the driver's side. Remove the clip holding the cable.
- 3) Remove the opener lever and detach the cover (1).
- 4) Remove the bolt and nut, and remove the pull handle assembly (2).



- (1) Cover
- (2) Pull handle ASSY
- (3) Cable

5) Remove the cable (3) from the pull handle assembly (2).

6) Rotate the fuel lock inside the quarter panel to 90° and remove. (Either right or left turn)



B: INSTALLATION

Install in the reverse order of removal.

C: INSPECTION

Make sure the front hood, trunk lid and fuel flap open and close smoothly.