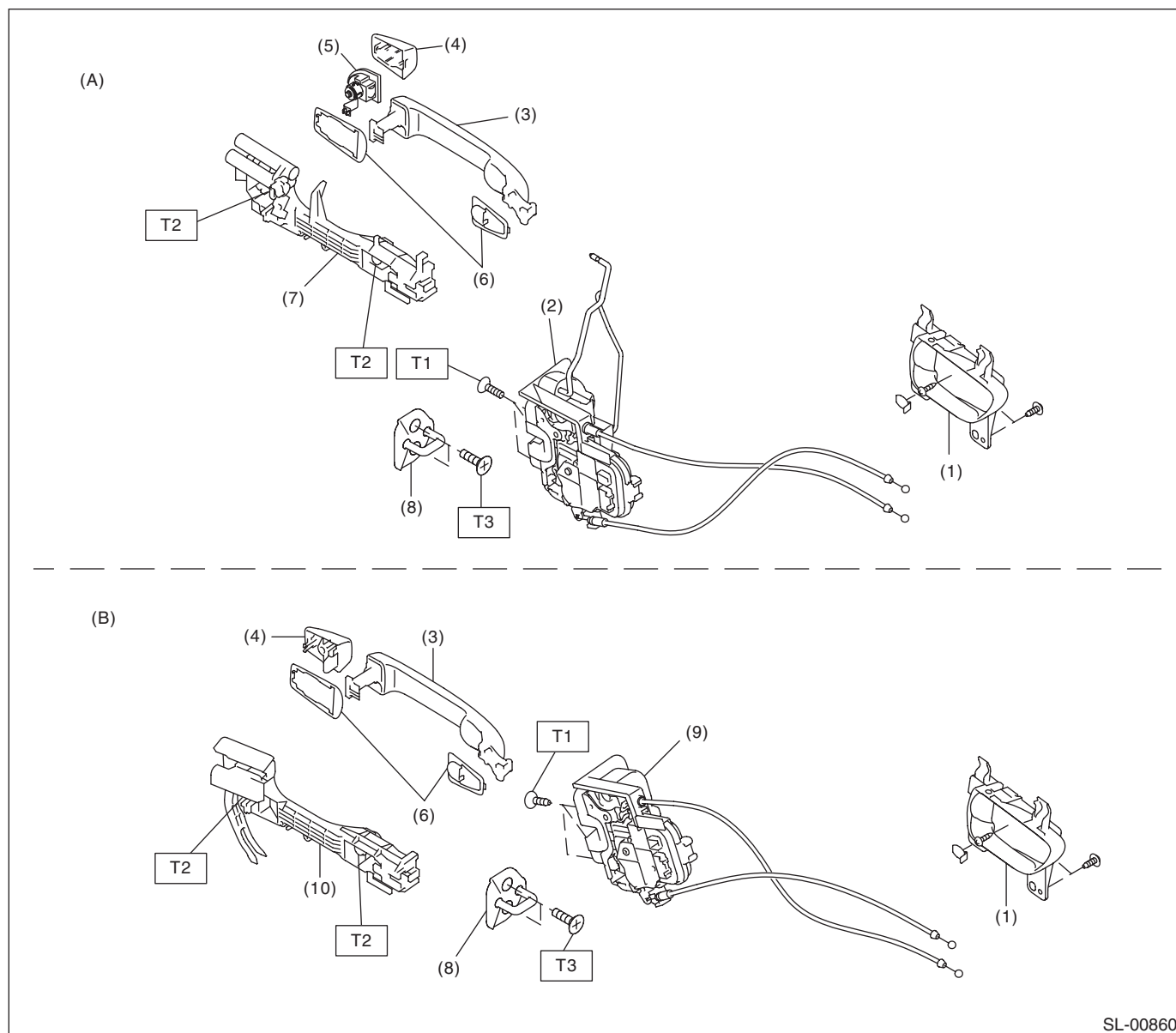


1. General Description

A: COMPONENT

1. DOOR LOCK ASSEMBLY



SL-00860

(A) Front

(B) Rear

- | | |
|--|---|
| (1) Inner remote ASSY | (6) Door outer handle spacer |
| (2) Front door latch and door lock actuator ASSY | (7) Front door outer handle frame ASSY |
| (3) Door outer handle | (8) Striker |
| (4) Door outer handle cover | (9) Rear door latch and door lock actuator ASSY |
| (5) Key cylinder (driver's side only) | (10) Rear door outer handle frame ASSY |

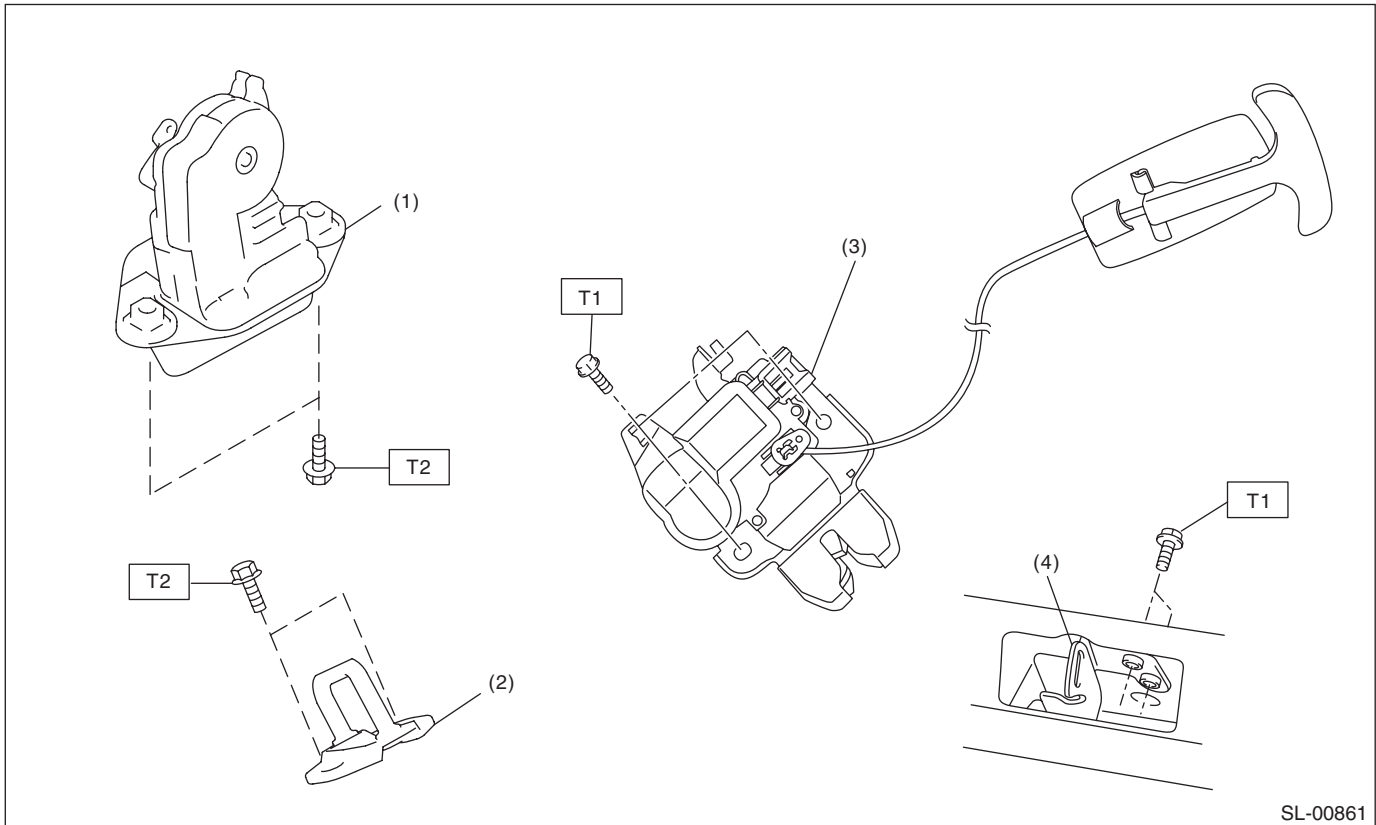
Tightening torque: N·m (kgf-m, ft-lb)

T1: 6.5 (0.66, 4.8)

T2: 7.5 (0.76, 5.5)

T3: 18 (1.8, 13.3)

2. REAR GATE LOCK AND TRUNK LID



(1) Rear gate latch and actuator ASSY

(2) Rear gate striker

(3) Trunk lid latch and actuator ASSY

(4) Trunk lid striker

Tightening torque: N·m (kgf-m, ft-lb)

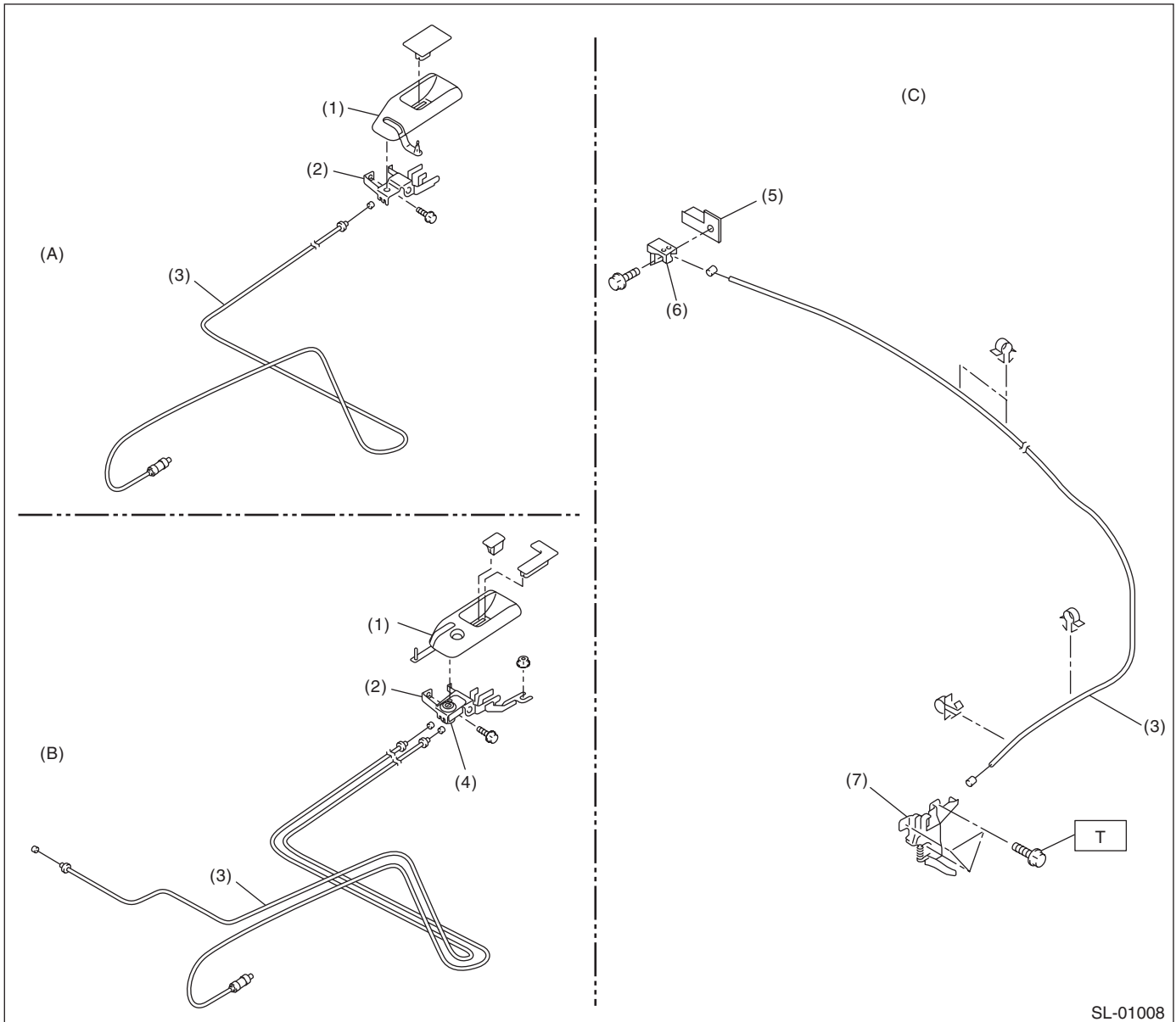
T1: 7.5 (0.76, 5.5)

T2: 25 (2.5, 18.4)

General Description

SECURITY AND LOCKS

3. FRONT HOOD LOCK AND REMOTE OPENERS



SL-01008

(A) Fuel lock release

(B) Fuel and trunk lock release

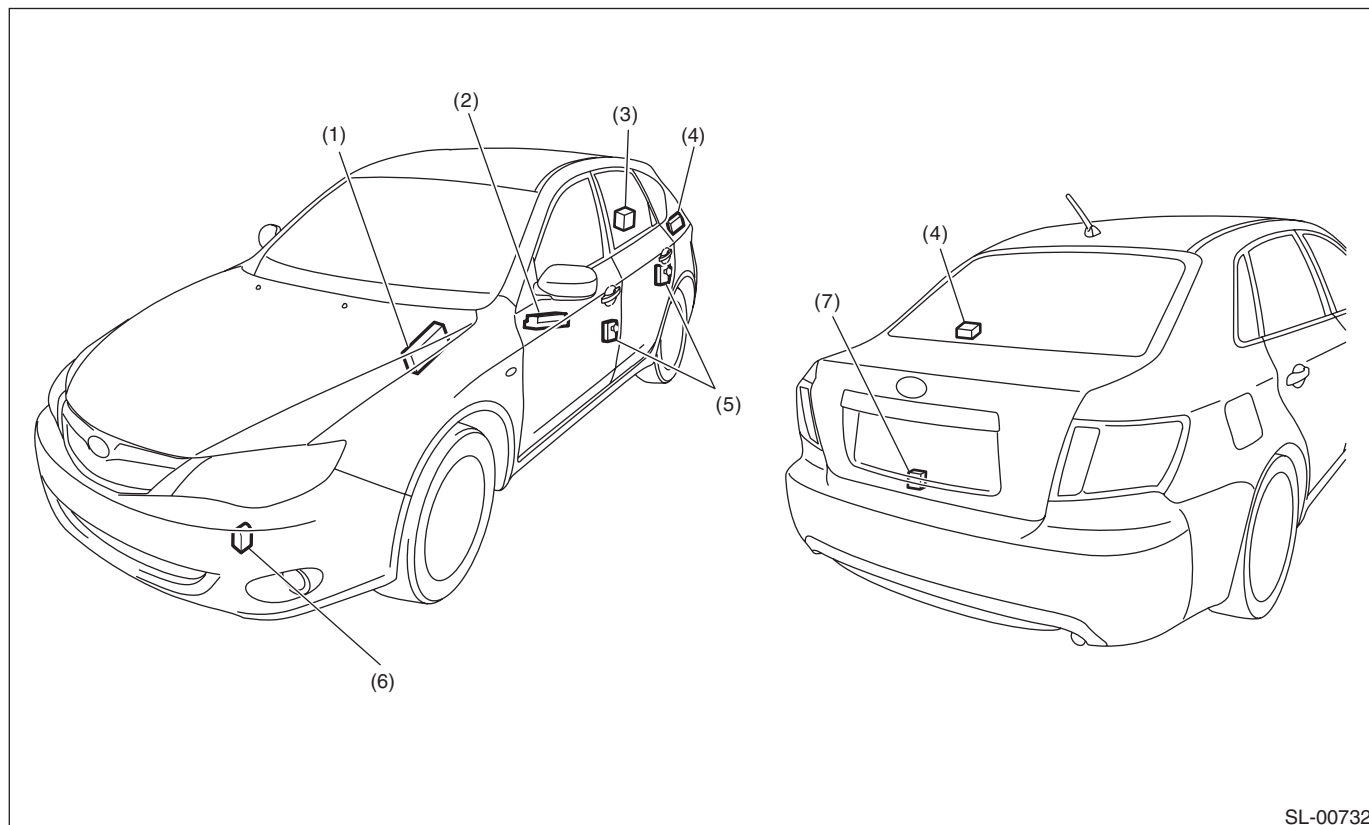
(C) Hood lock release

- (1) Cover
- (2) Pull handle ASSY
- (3) Cable
- (4) Key cylinder

- (5) Lever ASSY bracket
- (6) Lever ASSY
- (7) Front hood lock ASSY

Tightening torque: N·m (kgf-m, ft-lb)
T: 33 (3.36, 24.2)

4. KEYLESS ENTRY SYSTEM



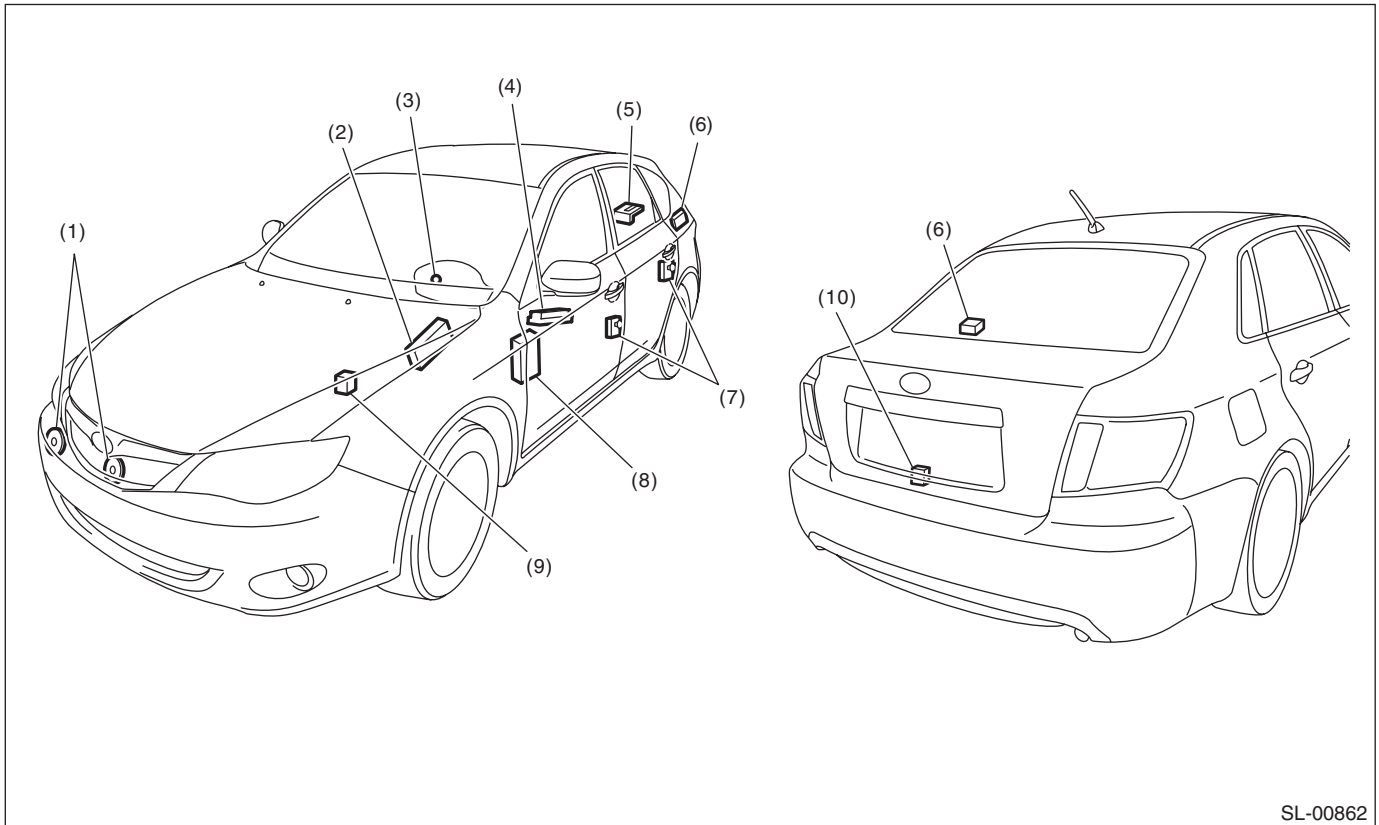
SL-00732

- | | | |
|---|----------------------------------|---|
| (1) Body integrated unit | (4) Keyless entry control module | (7) Trunk lid latch switch (4 door model) |
| (2) Power window main switch | (5) Door switch | |
| (3) Rear gate latch switch (5 door model) | (6) Keyless buzzer | |

General Description

SECURITY AND LOCKS

5. SECURITY SYSTEM



SL-00862

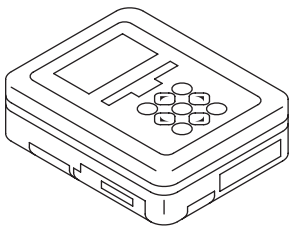
- | | | |
|---|---|---|
| (1) Horn | (5) Rear gate latch switch (5 door model) | (8) Impact sensor (driver's seat instrument panel side) (dealer option) |
| (2) Body integrated unit | (6) Keyless entry control module | (9) Horn relay (in main fuse box) |
| (3) Security indicator light (in combination meter) | (7) Door switch | (10) Trunk lid latch switch (4 door model) |
| (4) Power window main switch | | |

B: CAUTION

- Before disassembling or reassembling parts, always disconnect the battery ground cable from battery. When repairing the audio, control module, etc. which are provided with memory functions, record the memory contents before disconnecting the ground cable from battery. Otherwise, these contents are erased upon disconnection.
- When performing a check after disconnecting the battery or restoring from a dead battery condition, perform the check after turning the ignition to ON and OFF, then opening and closing the driver's side door a few times.
- Reassemble the parts in the reverse order of disassembly unless otherwise indicated.
- Adjust the parts to the specifications described in this manual if so designated.
- Connect the connectors securely during reassembly.
- After reassembly, make sure all the functional parts operate smoothly.
- The airbag system wiring harness is routed near electrical parts and switches.
- Do not use electrical test devices on any airbag system wiring harnesses or connector circuits.
- Be careful not to damage the airbag system wiring harness when servicing the ignition key cylinder.

C: PREPARATION TOOL

1. SPECIAL TOOL

ILLUSTRATION	TOOL NUMBER	DESCRIPTION	REMARKS
 ST1B022XU0	1B022XU0	SUBARU SELECT MONITOR III KIT	Used for troubleshooting the electrical system.

2. GENERAL TOOL

TOOL NAME	REMARKS
Circuit tester	Used for measuring resistance and voltage.
Drill	Used for replacing ignition key lock.
TORX® T30	Used for removing and installing the door outer handle.
Clip remover	Used for removing trim clip