

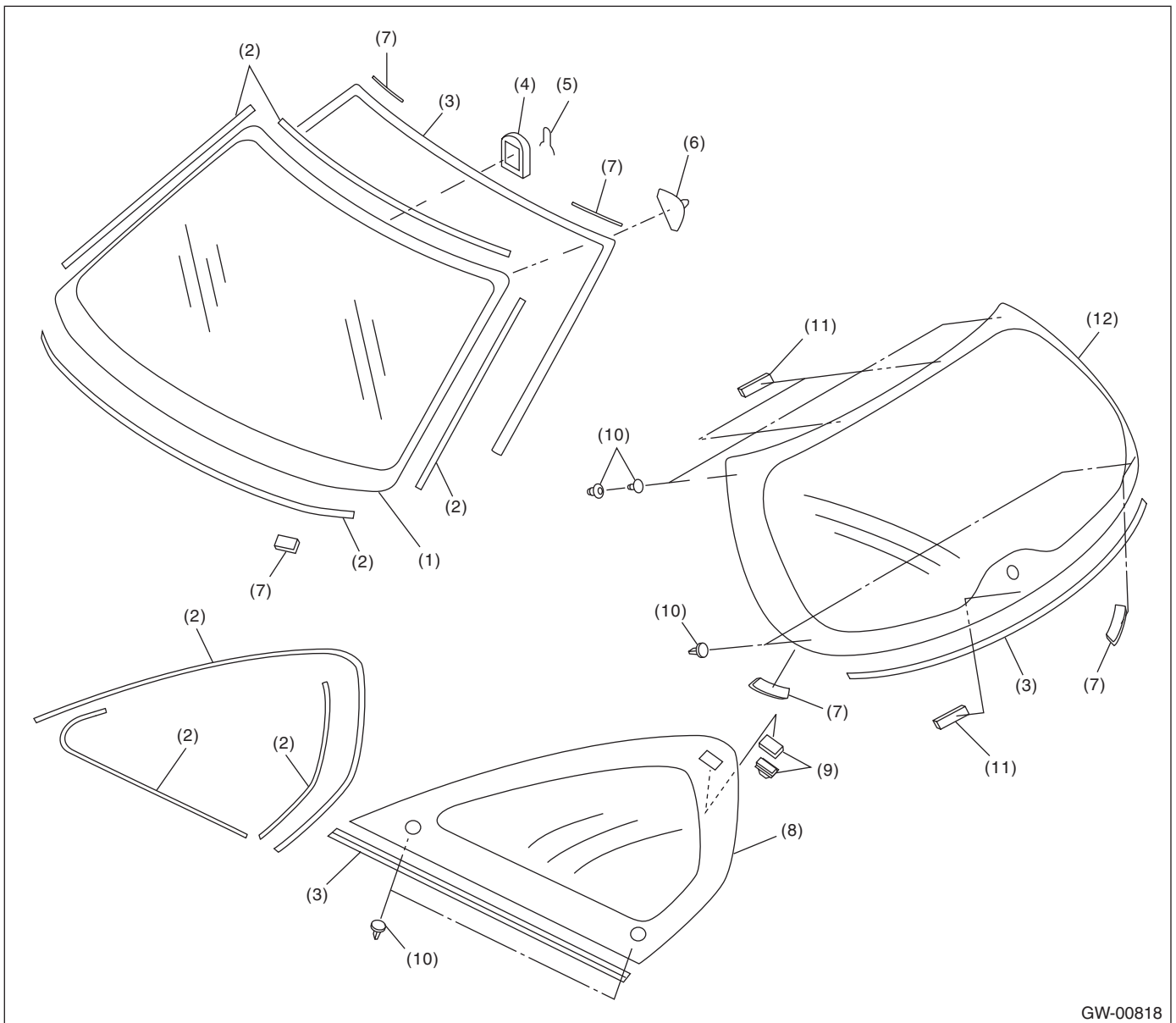
# General Description

GLASS/WINDOWS/MIRRORS

## 1. General Description

### A: COMPONENT

#### 1. FIXED GLASS (5 DOOR MODEL)



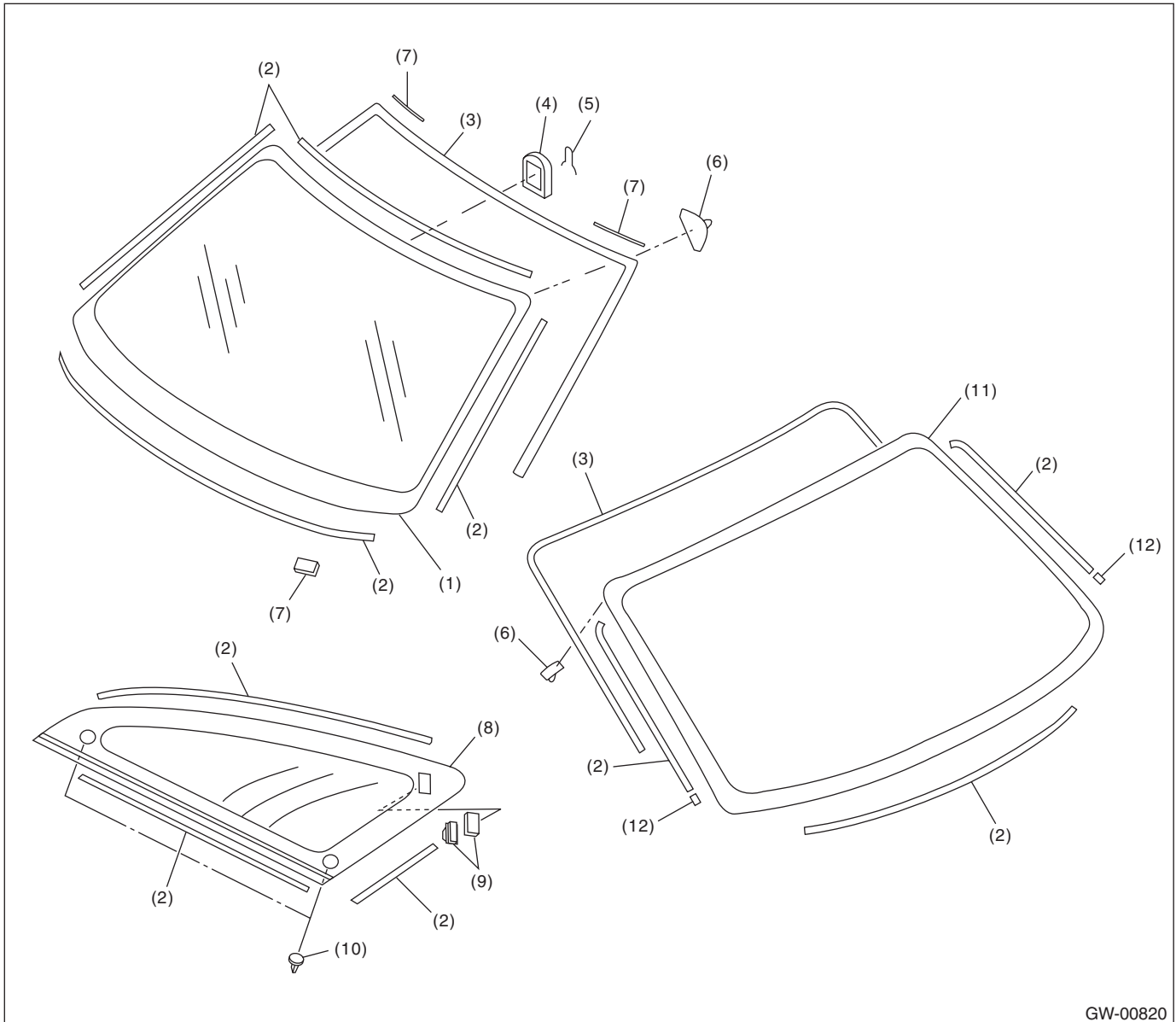
GW-00818

- (1) Windshield glass
- (2) Dam rubber
- (3) Molding
- (4) Rearview mirror mount

- (5) Spring
- (6) Locating pin
- (7) Seal
- (8) Rear quarter glass

- (9) Fastener
- (10) Locating pin
- (11) Spacer
- (12) Rear gate glass

## 2. FIXED GLASS (4 DOOR MODEL)

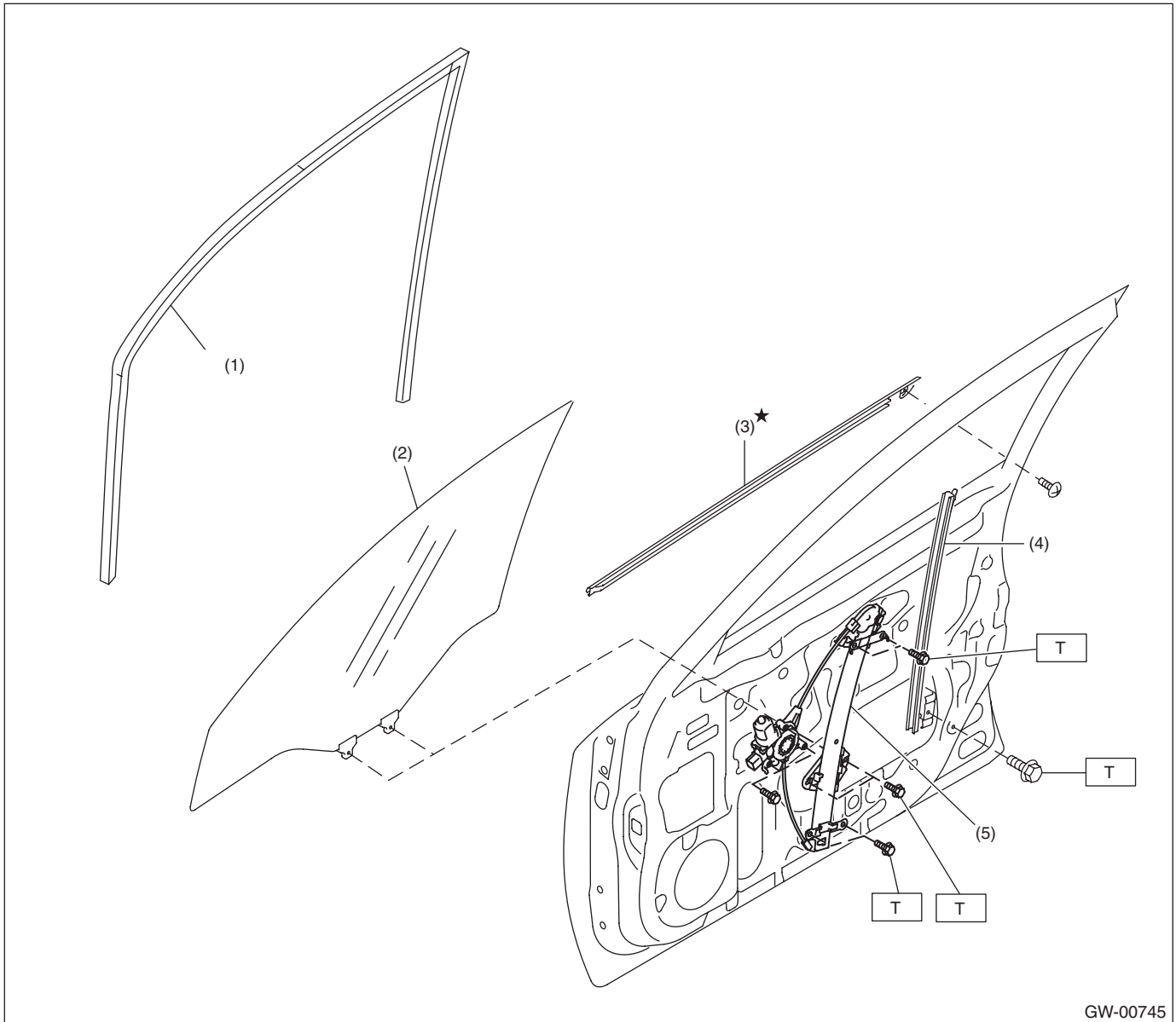


- |                           |                        |                        |
|---------------------------|------------------------|------------------------|
| (1) Windshield glass      | (5) Spring             | (9) Fastener           |
| (2) Dam rubber            | (6) Locating pin       | (10) Locating pin      |
| (3) Molding               | (7) Seal               | (11) Rear window glass |
| (4) Rearview mirror mount | (8) Rear quarter glass | (12) Spacer            |

# General Description

## GLASS/WINDOWS/MIRRORS

### 3. FRONT DOOR GLASS

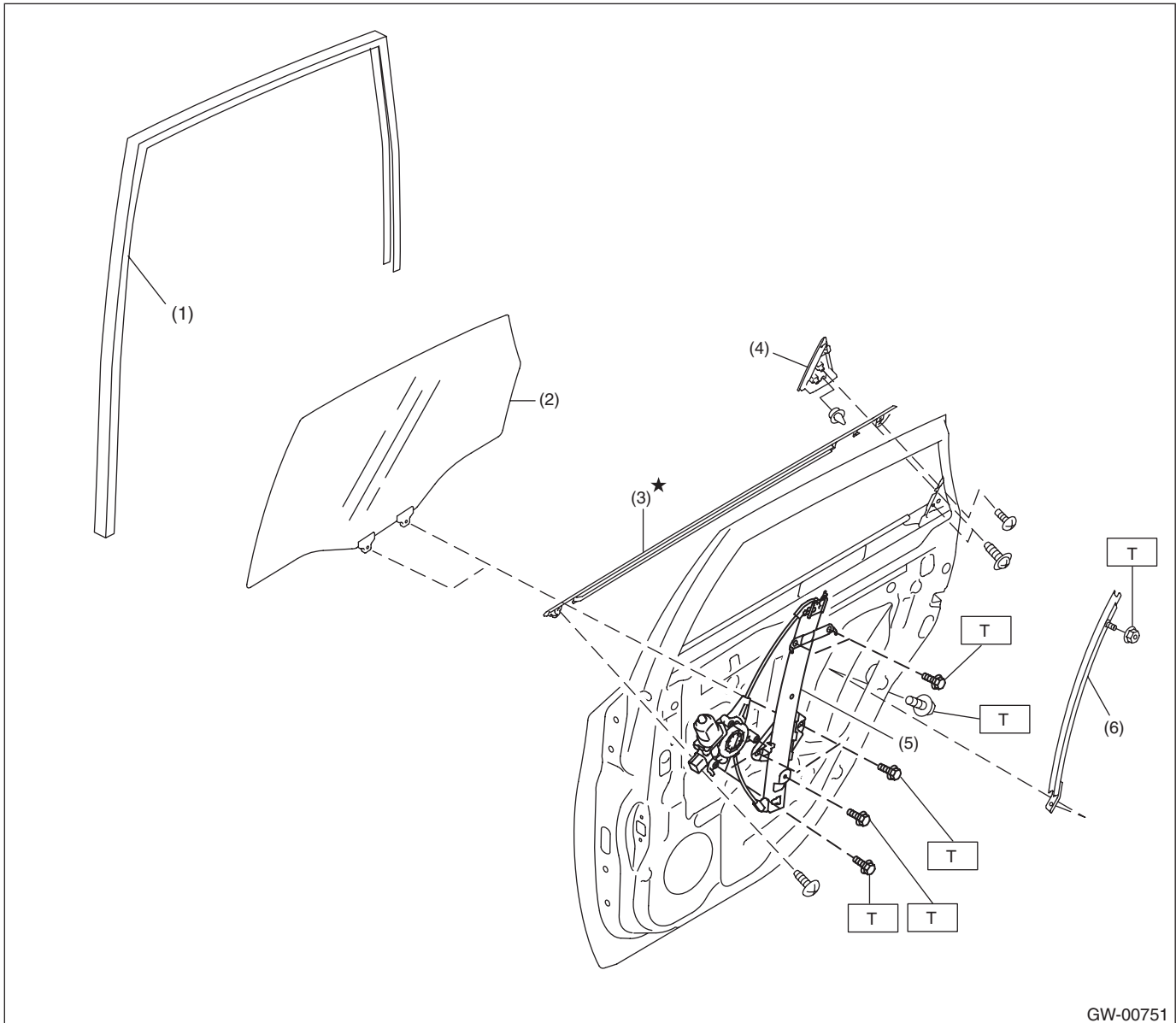


- |                         |                            |
|-------------------------|----------------------------|
| (1) Glass run rubber    | (4) Door sash              |
| (2) Glass               | (5) Regulator & motor ASSY |
| (3) Weather strip outer |                            |

**Tightening torque: N·m (kgf-m, ft-lb)**

**T: 7.5 (0.76, 5.5)**

## 4. REAR DOOR GLASS



GW-00751

- |                         |                             |
|-------------------------|-----------------------------|
| (1) Glass run rubber    | (4) Rear outer gusset cover |
| (2) Glass               | (5) Regulator & motor ASSY  |
| (3) Weather strip outer | (6) Door sash               |

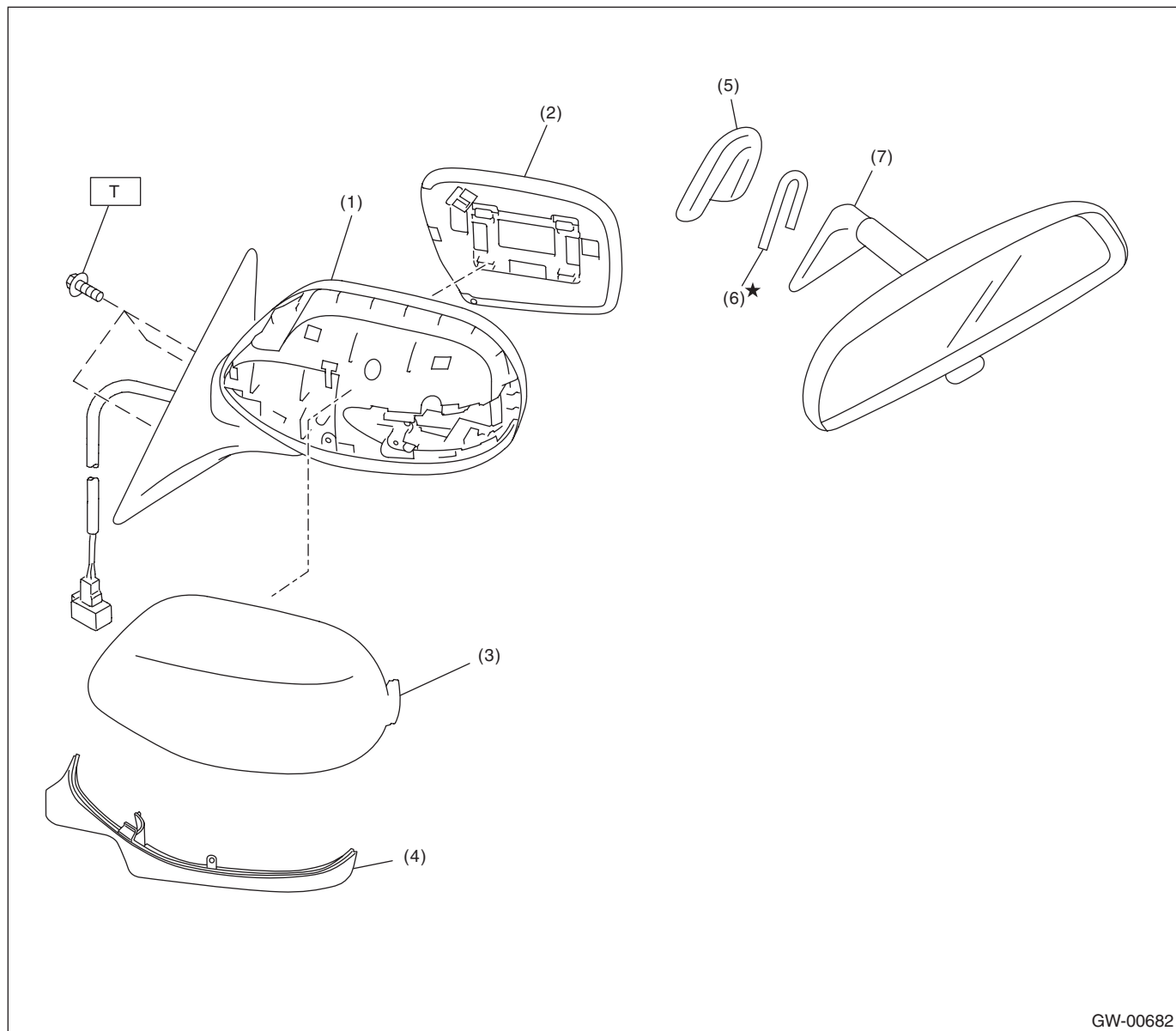
**Tightening torque: N·m (kgf-m, ft-lb)**

**T: 7.5 (0.76, 5.5)**

# General Description

GLASS/WINDOWS/MIRRORS

## 5. MIRROR



GW-00682

- |                            |                          |
|----------------------------|--------------------------|
| (1) Outer mirror case ASSY | (5) Mount                |
| (2) Mirror                 | (6) Spring               |
| (3) Scalp cap              | (7) Rearview mirror ASSY |
| (4) Lower cover            |                          |

**Tightening torque: N·m (kgf-m, ft-lb)**

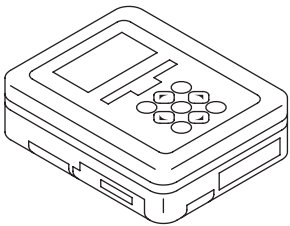
**T: 4.5 (0.46, 3.3)**

## B: CAUTION

- When electrical connectors are disconnected, always conduct an operational check after connecting them again.
- Avoid impact and damage to the glass.

## C: PREPARATION TOOL

### 1. SPECIAL TOOL

ILLUSTRATION	TOOL NUMBER	DESCRIPTION	REMARKS
 <p>ST1B022XU0</p>	1B022XU0	SUBARU SELECT MONITOR III KIT	Used for setting of each function and trouble-shooting for electrical system.

### 2. GENERAL TOOL

TOOL NAME	REMARKS
Circuit tester	Used for checking voltage and continuity.
Piano wire	Used for removing the window glass.
Cutter knife	Used for removing the window glass.
Windshield glass knife	Used for removing the window glass.