

INTAKE (INDUCTION)

IN(H4SO)

Page

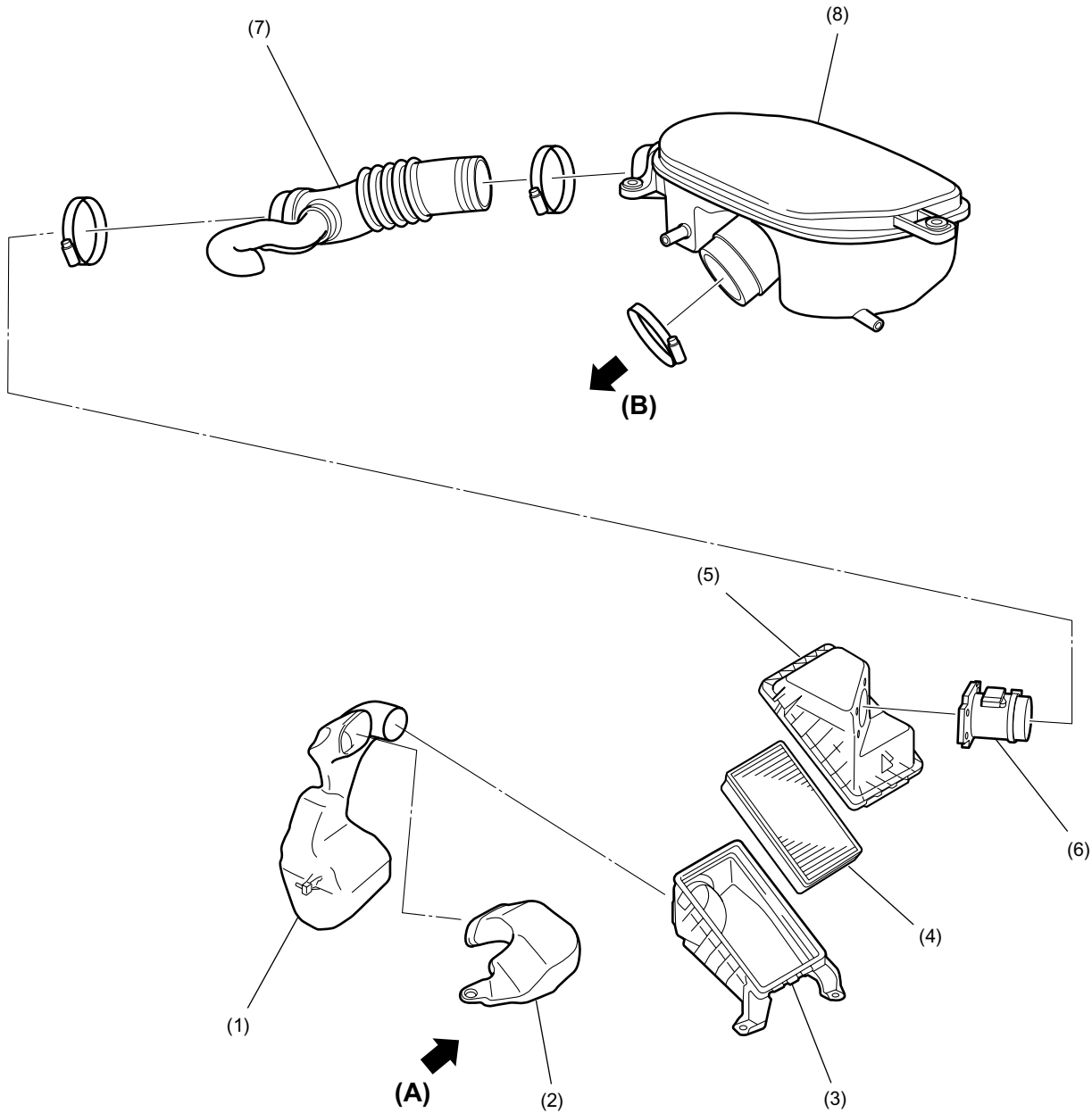
1. General 2

GENERAL

INTAKE (INDUCTION)

1. General

The intake system consists of an intake duct, a resonator chamber, and an air cleaner element housed in its case. The resonator, located upstream of the air cleaner case, effectively reduces the intake noise level.



IN-02072

- | | |
|---|----------------------|
| (1) Resonator chamber | (A) Outside air |
| (2) Intake duct | (B) To throttle body |
| (3) Air cleaner lower case | |
| (4) Air cleaner element | |
| (5) Air cleaner upper case | |
| (6) Mass air flow and intake air temperature sensor | |
| (7) Intake duct | |
| (8) Air intake chamber | |

GENERAL

INTAKE (INDUCTION)

MEMO

IN(H₄SO)-4